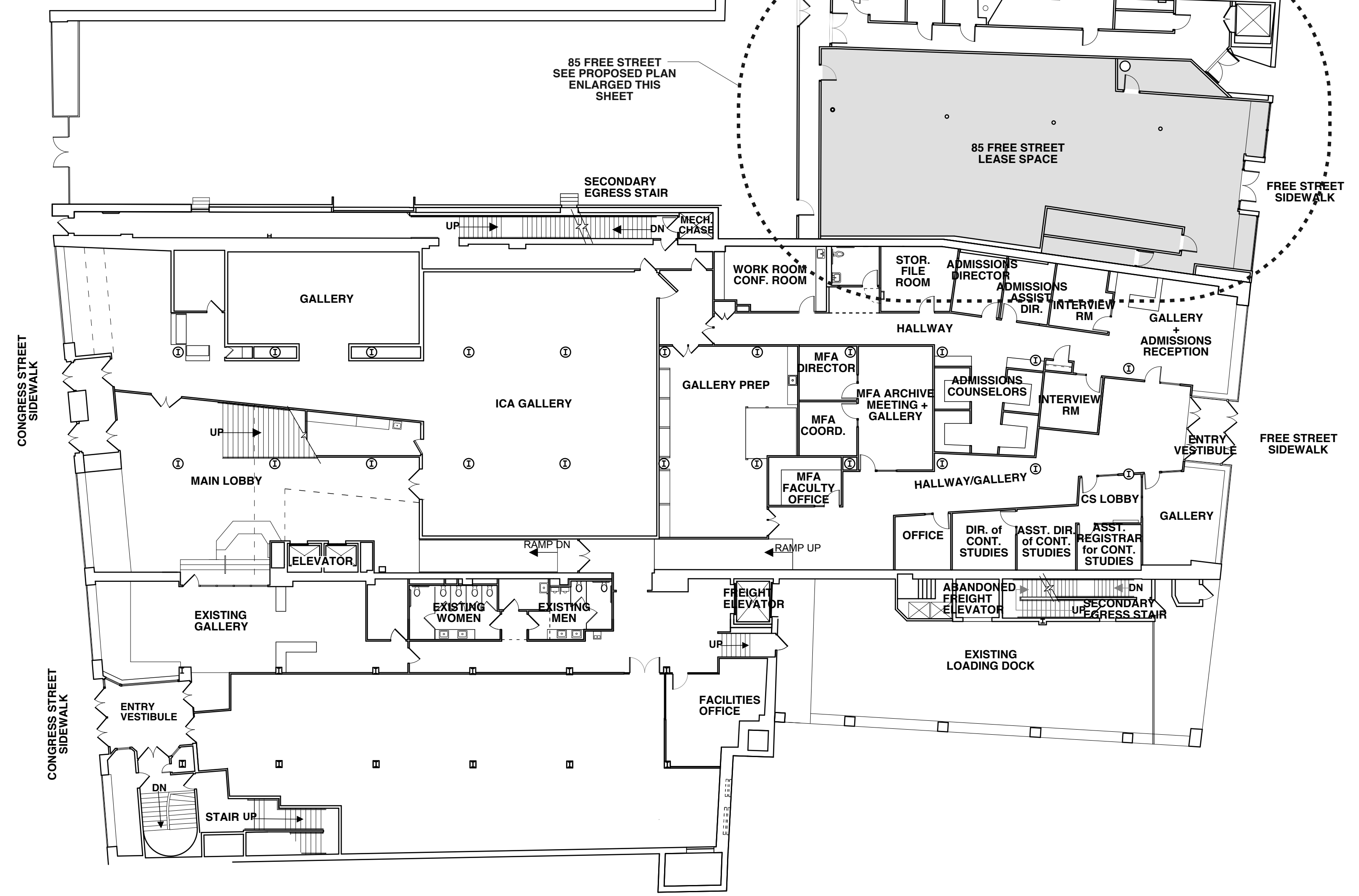
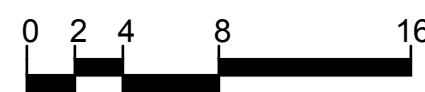


1 Existing First Floor Plan - Proposed Alterations

SCALE: 1/8" = 1'-0"



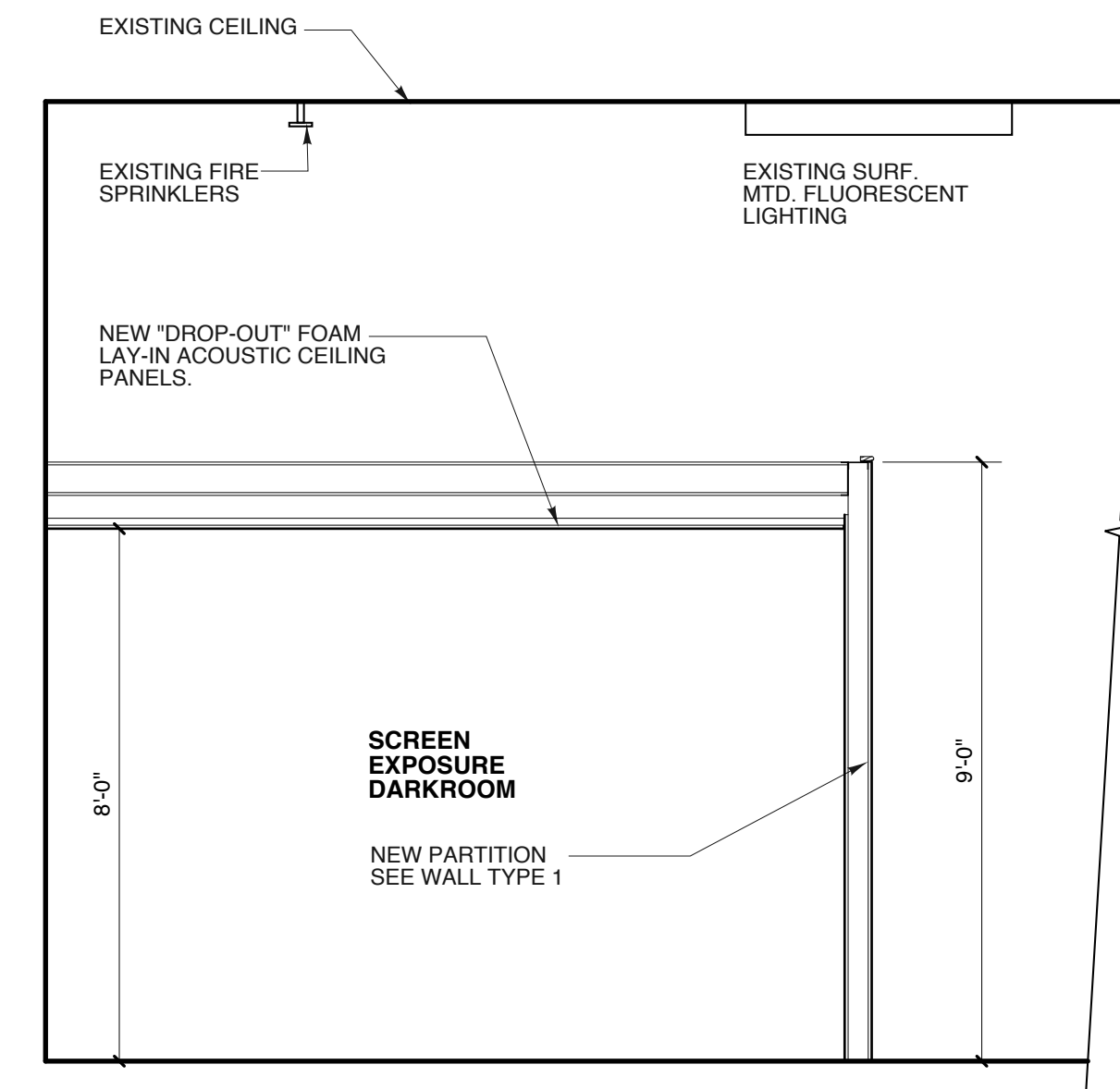
2 Existing First Floor Plan - Existing Condition

SCALE: 1/16" = 1'-0"



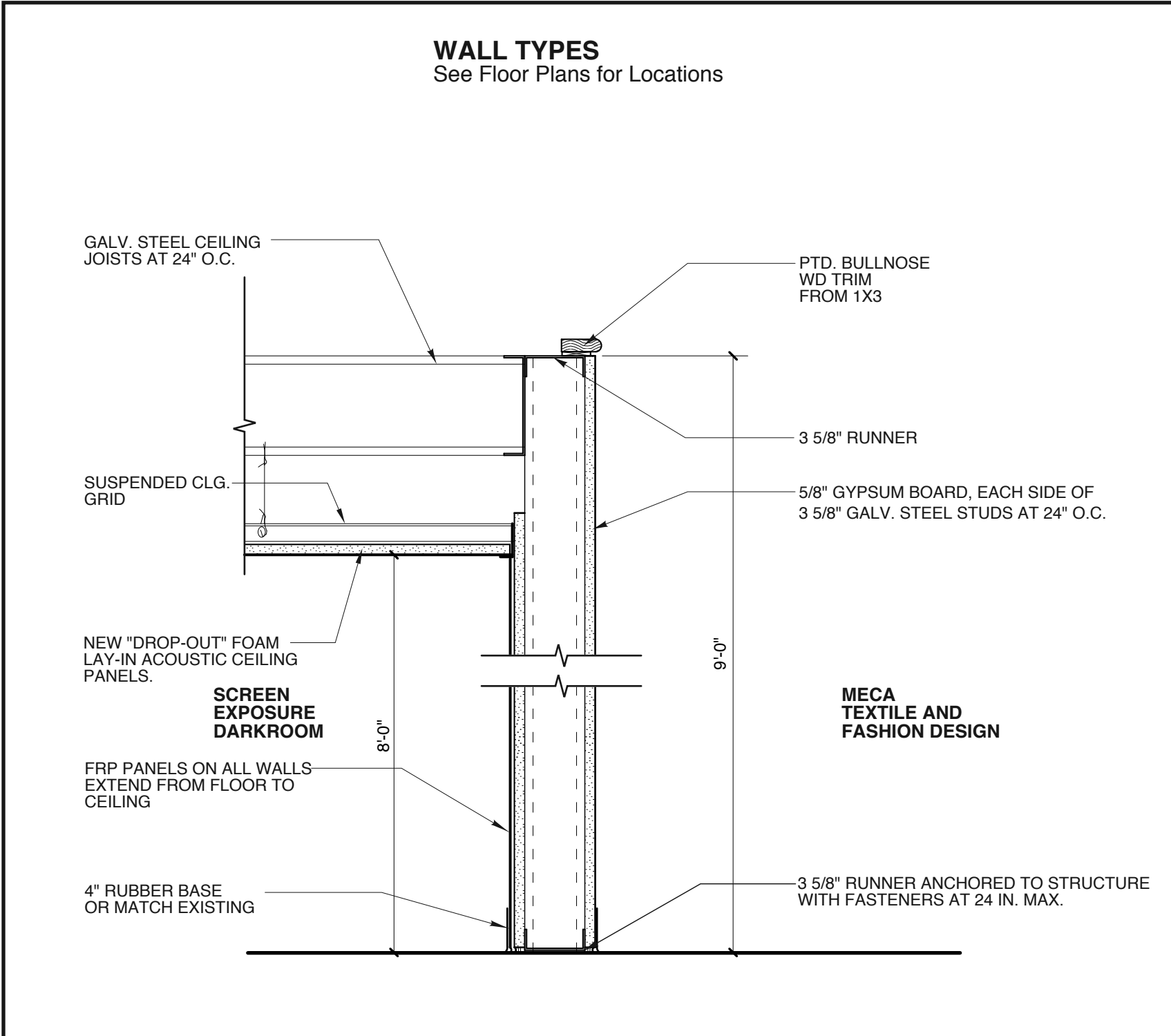
DOOR AND HARDWARE NOTES:

1. All Doors To Be 3'-0" Min. Wide, Unless Otherwise Noted.
2. All Door Glazing and Sidelight Glazing to be 1/4" Tempered Safety Glass.
3. All Door Locksets And Passages Sets To Be Lever Handle or Panic Bar type.



3 Partial Buildings Section - Proposed Darkroom

SCALE: 3/8" = 1'-0"



1 New Metal Stud Partition at Darkroom

GRAPHIC KEY

	Egress Path 1		Existing Walls		EXIT SIGNS
	Egress Path 2		New Partial Hgt. Walls		EMERGENCY LIGHTS
	Egress Path				

PROPOSED FIRST FLOOR ALTERATIONS

BUILDING CODE ANALYSIS (IBC 2009, & 2009 NFPA 101)

Use and Occupancy Classification	Business Group B	
Automatic Sprinkler System	The building is currently fully sprinklered per NFPA 13	
Means of Egress Components		
Exit access travel distance w/ automatic sprinkler system	300 ft (IBC Table 1016.1)	300 ft (NFPA 101, 39.2.6.1)
Egress Path 1 = 70 LF to Street Exit		
Egress Path 2 = 148 LF to Street Exit		
Maximum Common Path of Travel	100 ft (IBC Table 1014.3)	100 ft (NFPA 101, 39.2.5.3.1 & 7.5.1.1.4)
Not Exceeded		
Minimum number of exits required per floor	(2) (IBC Table 1021.1)	(2) (NFPA 101, 7.4.1.1)
Exits Provided	(2)	
Minimum width = 3'-0"		
(2 exits provided total width = 12'-0")		
Occupant Load (NFPA 101 Table 7.3.1.2, and IBC 1004.1.1)	85 FREE ST. LEASED SPACE:	3,259 Gross Sq. Ft.
	Occupant Load calculated as Business Use using Occupant Load Factor of 100 gross sq ft per person	Occupancy Load = 33 persons