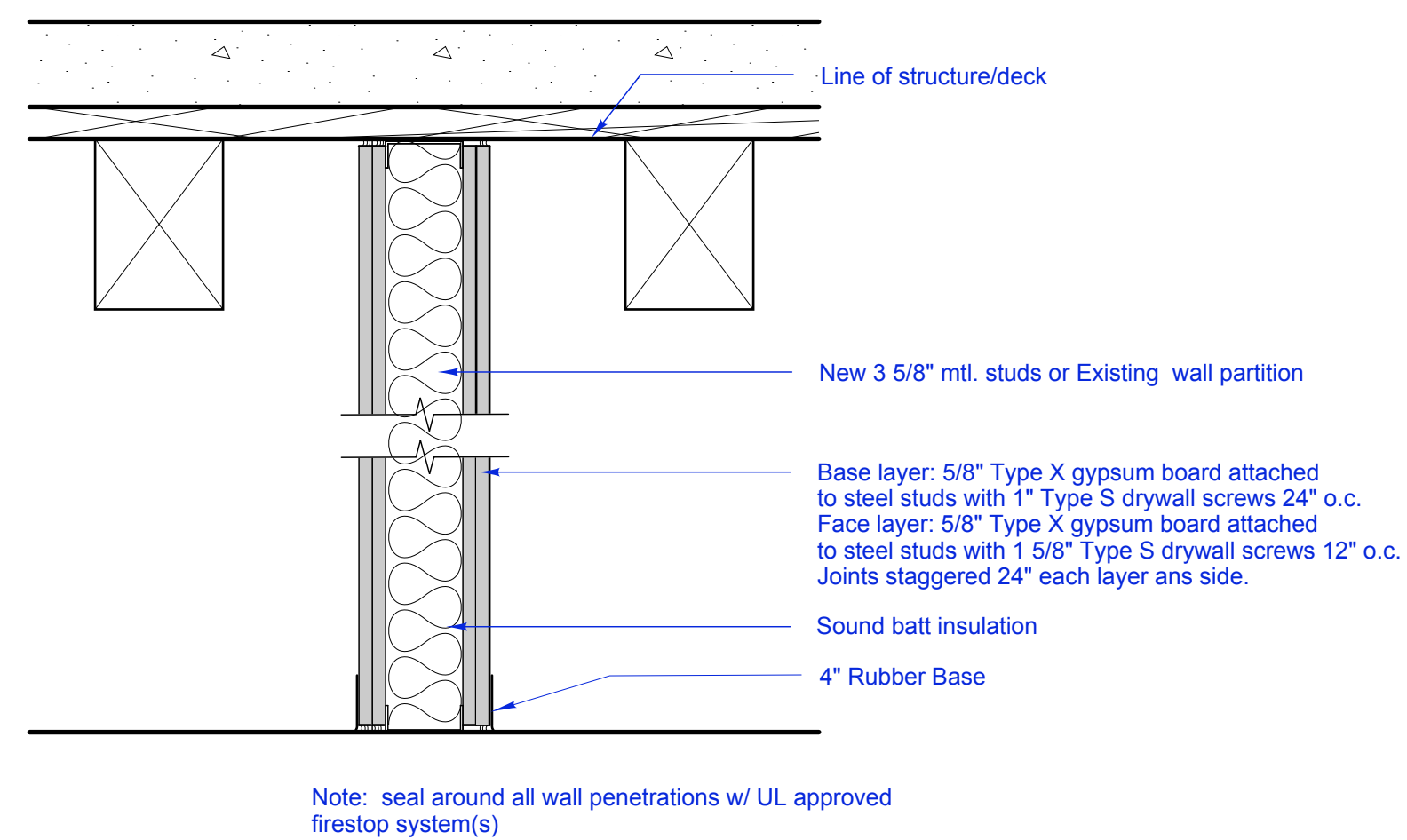


NOT USED

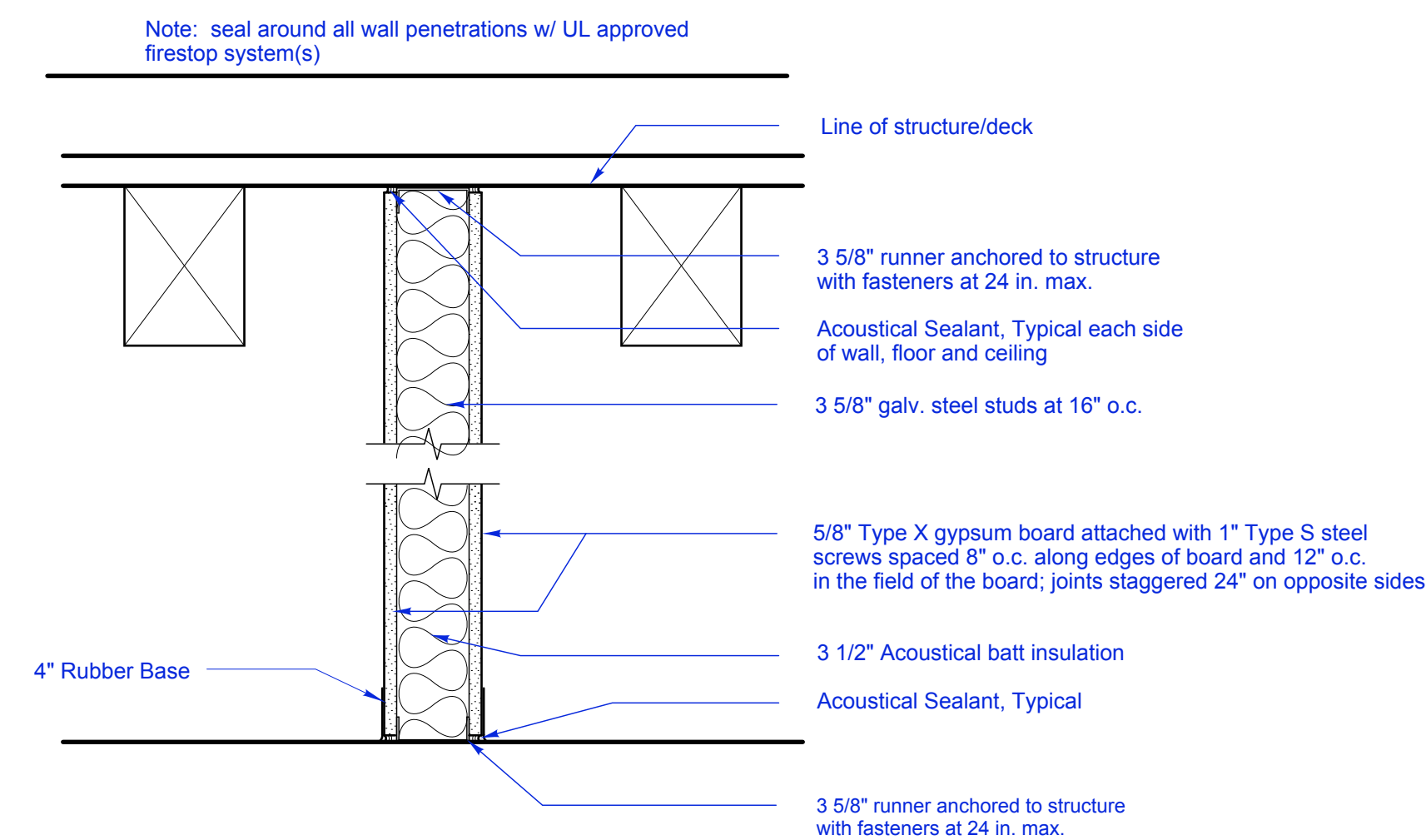
1 Metal Stud Partition
NON-RATED



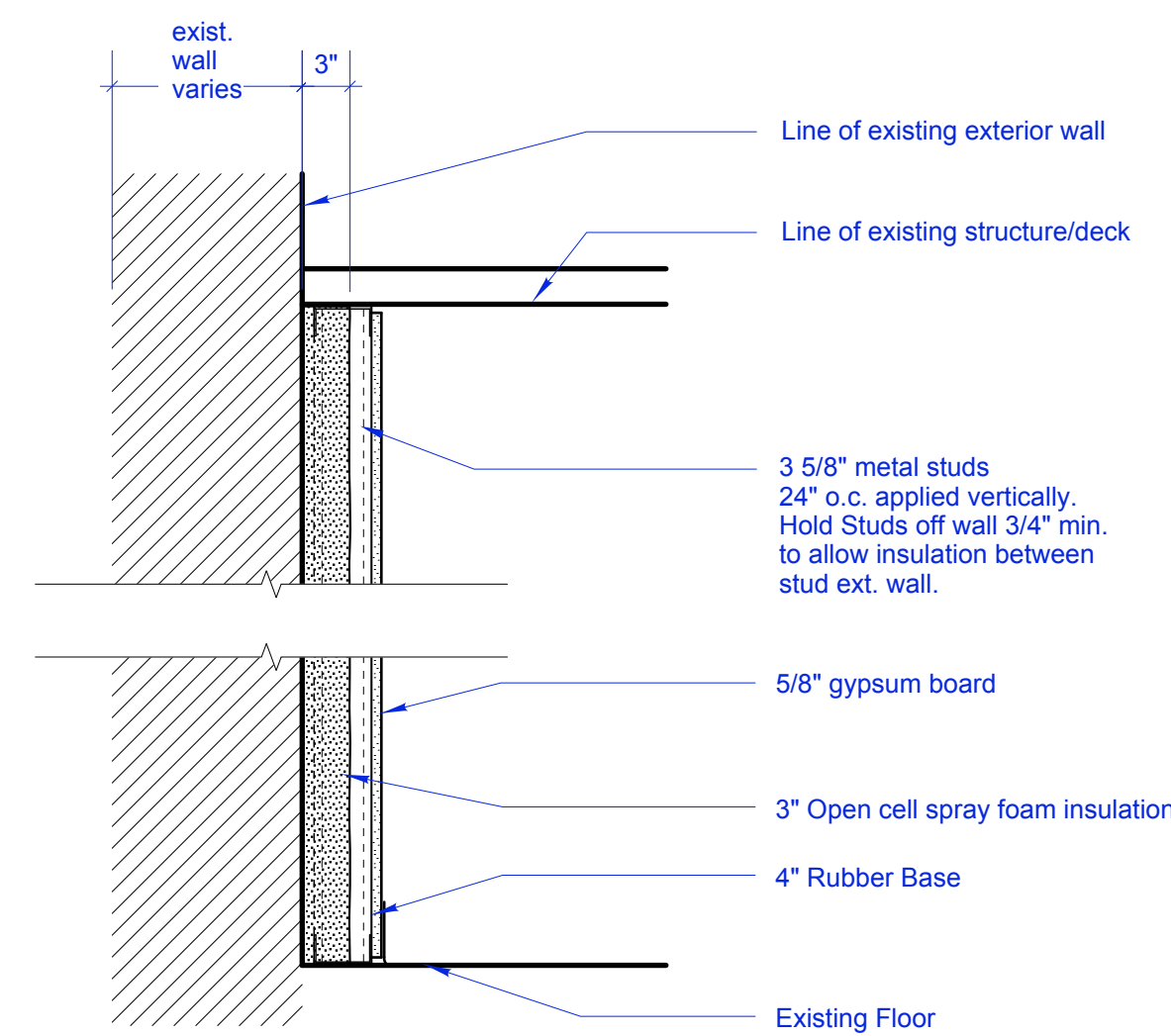
3 Metal Stud Partition
2-HOUR FIRE RATING - UL U411

PARTITION NOTES:

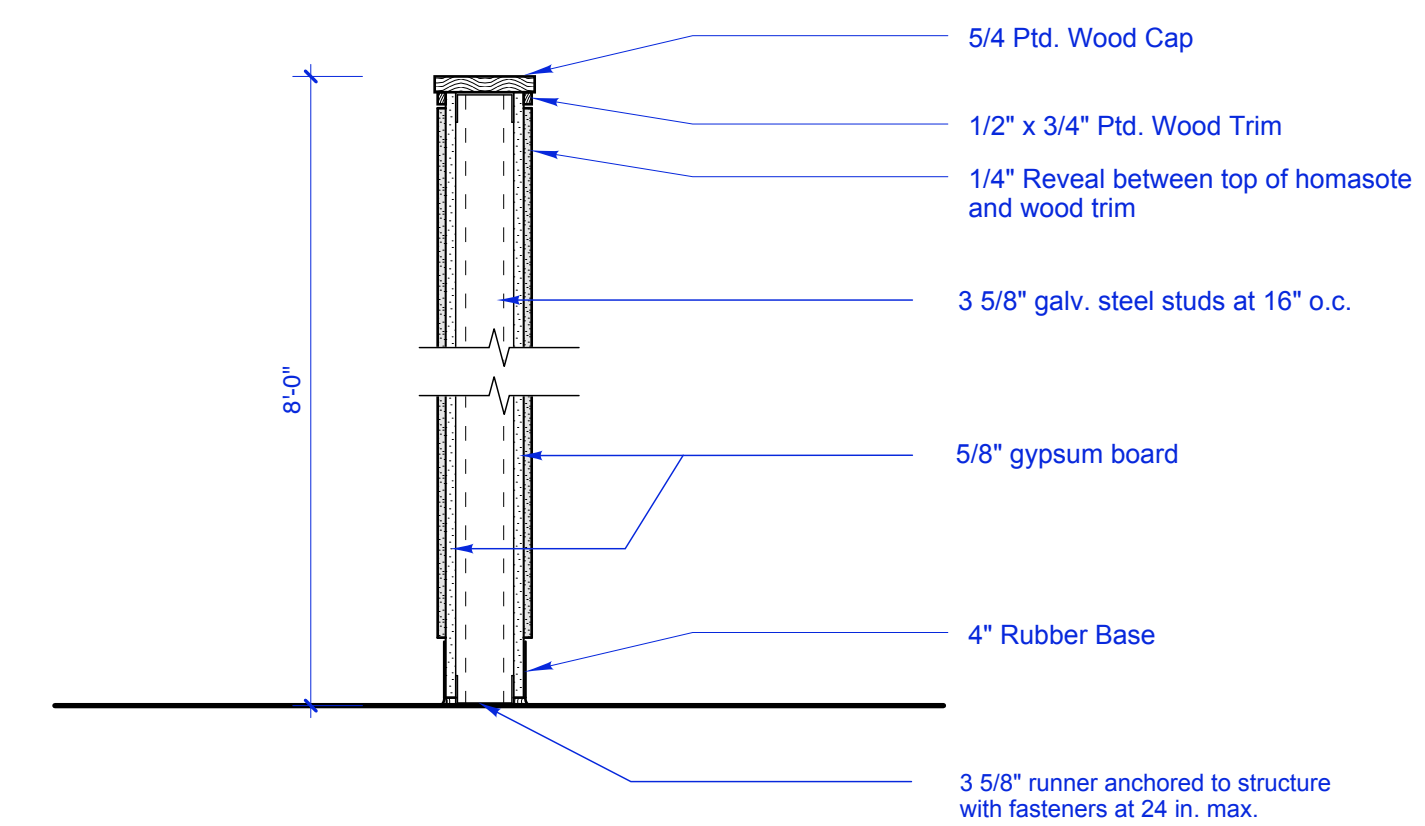
- Partition construction is indicated by dimensioned thickness and room finish schedule. All partitions not dimensioned are constructed with 3 5/8" metal studs.
- New Partition:
 - To be 3 5/8" 20 gauge metal studs at 16" o.c. with 1 (one) layer Type 'X' 5/8" gypsum wallboard each side, U.N.O.
 - Where wall is infill, or adjustment to existing wall, match existing wall thickness.
 - Extend all partitions to structure above, U.N.O. Provide slip-track, or other acceptable means of allowing deflection in the roof, at all full-height partitions.
 - Extend non-full height partitions 3" above ceiling, minimum, brace horizontally to structure above at 4'-0" o.c. staggered.
- Provide non-combustible firestopping, at the ceiling, in all partitions where gypsum wallboard on both sides of the partition does not extend to the roof deck.
- Provide 3 1/2" acoustical batt insulation in all new walls, U.N.O.



2 Metal Stud Partition
1-HOUR FIRE RATING - UL U465



4 Metal Stud Furring at Existing Exterior Wall
Non Load Bearing / Non Rated Assembly



5 Partial Height Partition
Non Load Bearing / Non Rated Assembly