

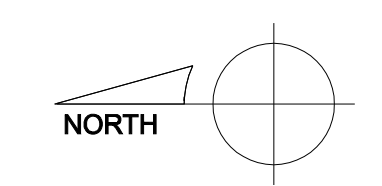
Richard Renner Architects  
 61 Pleasant Street  
 Suite 105  
 Portland, Maine 04101  
 207.773.8889  
 73-8589 fax  
 office@rennerarchitects.com

MAINE COLLEGE OF ART  
 522 CONGRESS STREET  
 Portland, Maine

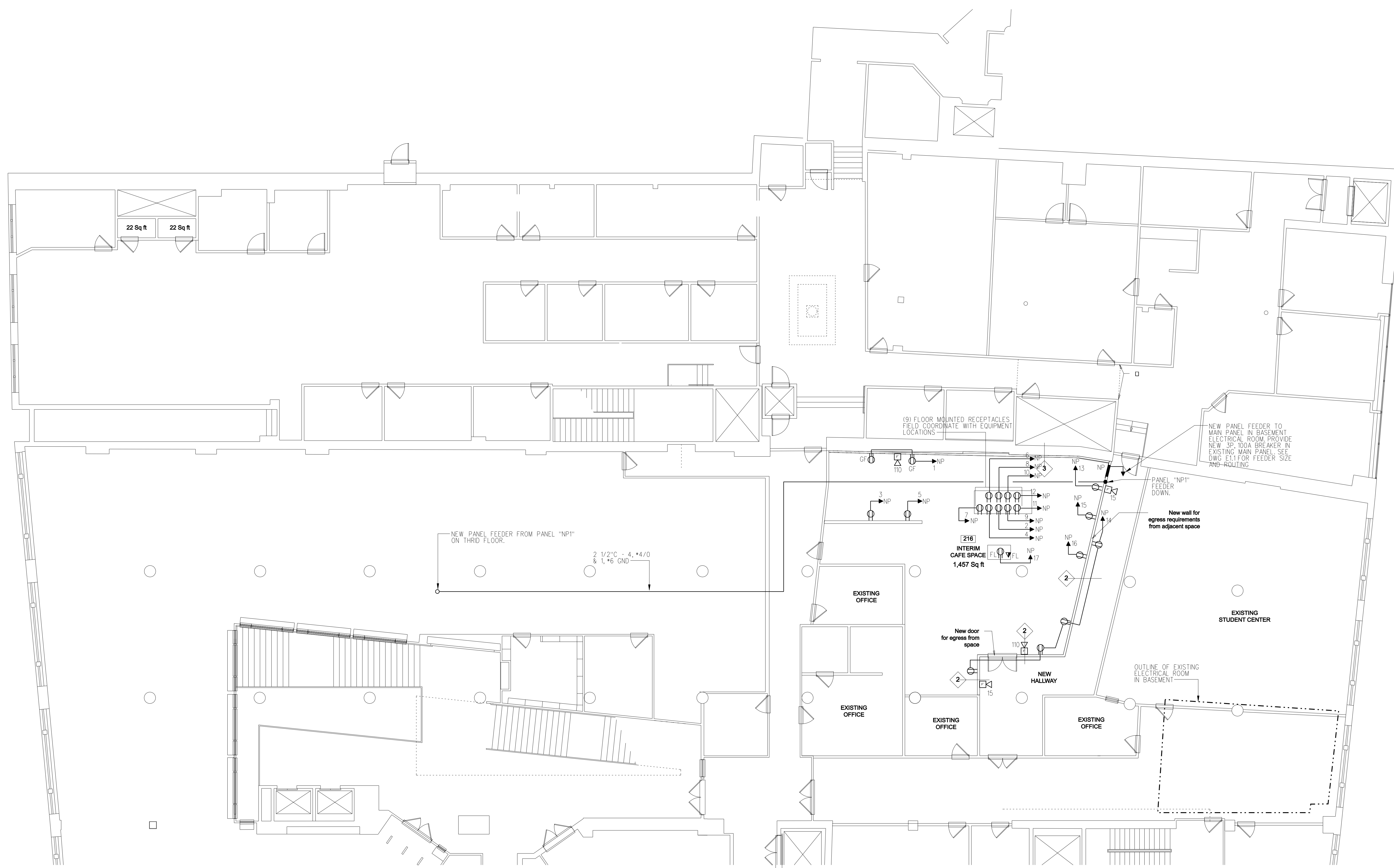
First Floor | Power Plan  
 Drawn by: SPD  
 Scale: 1/8"=1'  
 Date: 3.31.08

File Name: -  
 RRA-Project No. RRA2007.15.00  
 Revised:

Progress Print  
 Not for Construction  
 4/1/08



E1.1

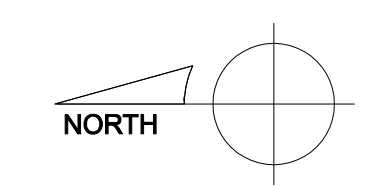


Richard Renner Architects  
 61 Pleasant Street  
 Suite 105  
 Portland, Maine 04101  
 207.773.8889  
 207.773.8889 fax  
 office@rennerarchitects.com

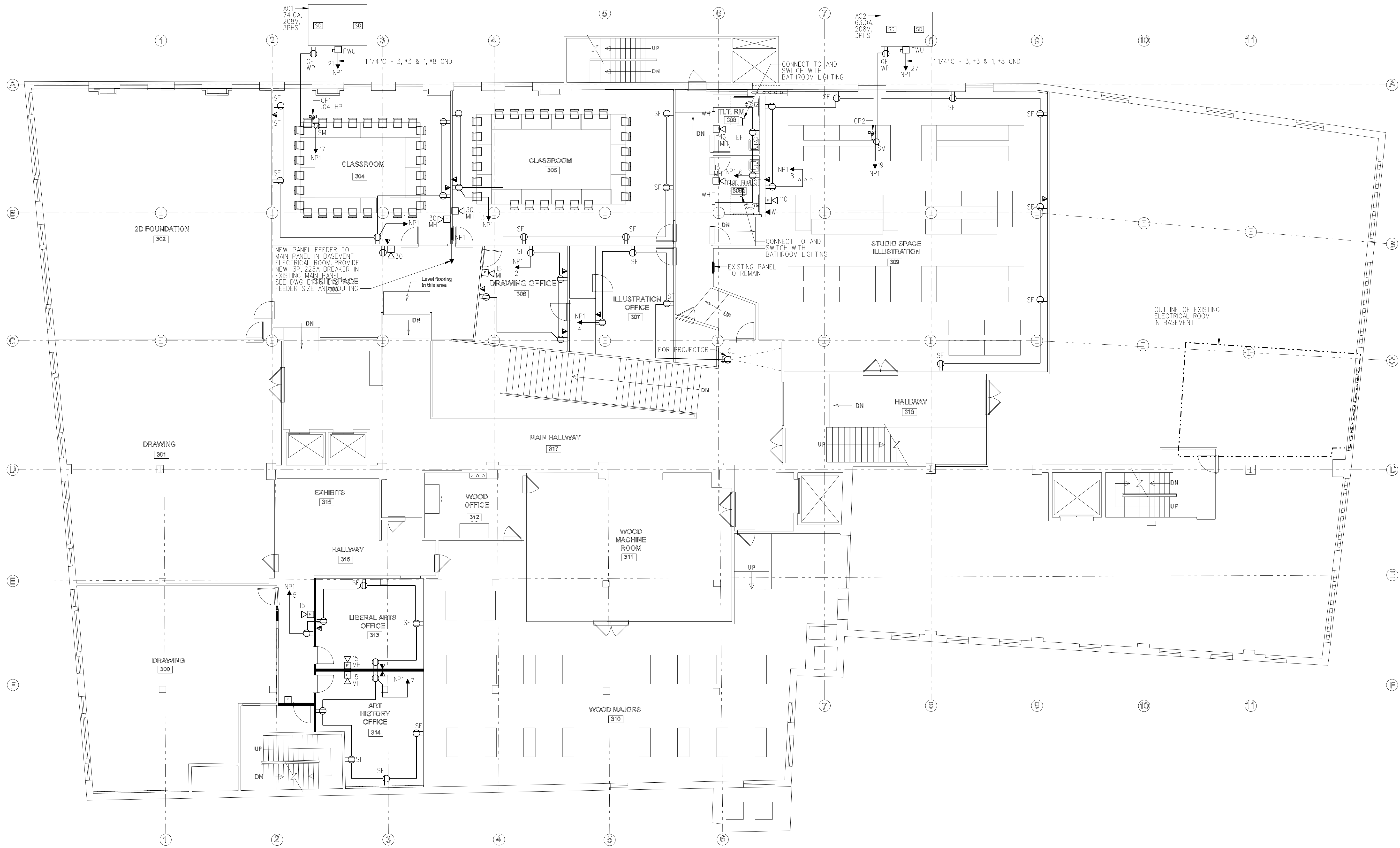
MAINE COLLEGE OF ART  
 522 CONGRESS STREET  
 Portland, Maine

Second Floor | Power Plan  
 Drawn by: SPD  
 Scale: 1/8"=1'  
 Date: 3.31.08  
 File Name: -  
 RGA Project No. RFA2007.15.00  
 Revised:

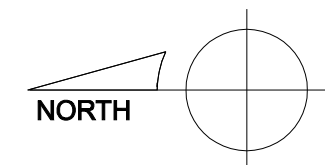
Progress Print  
 Not for Construction  
 4/1/08



E1.2



**Progress Print**  
**Not for Construction**  
**4/1/08**



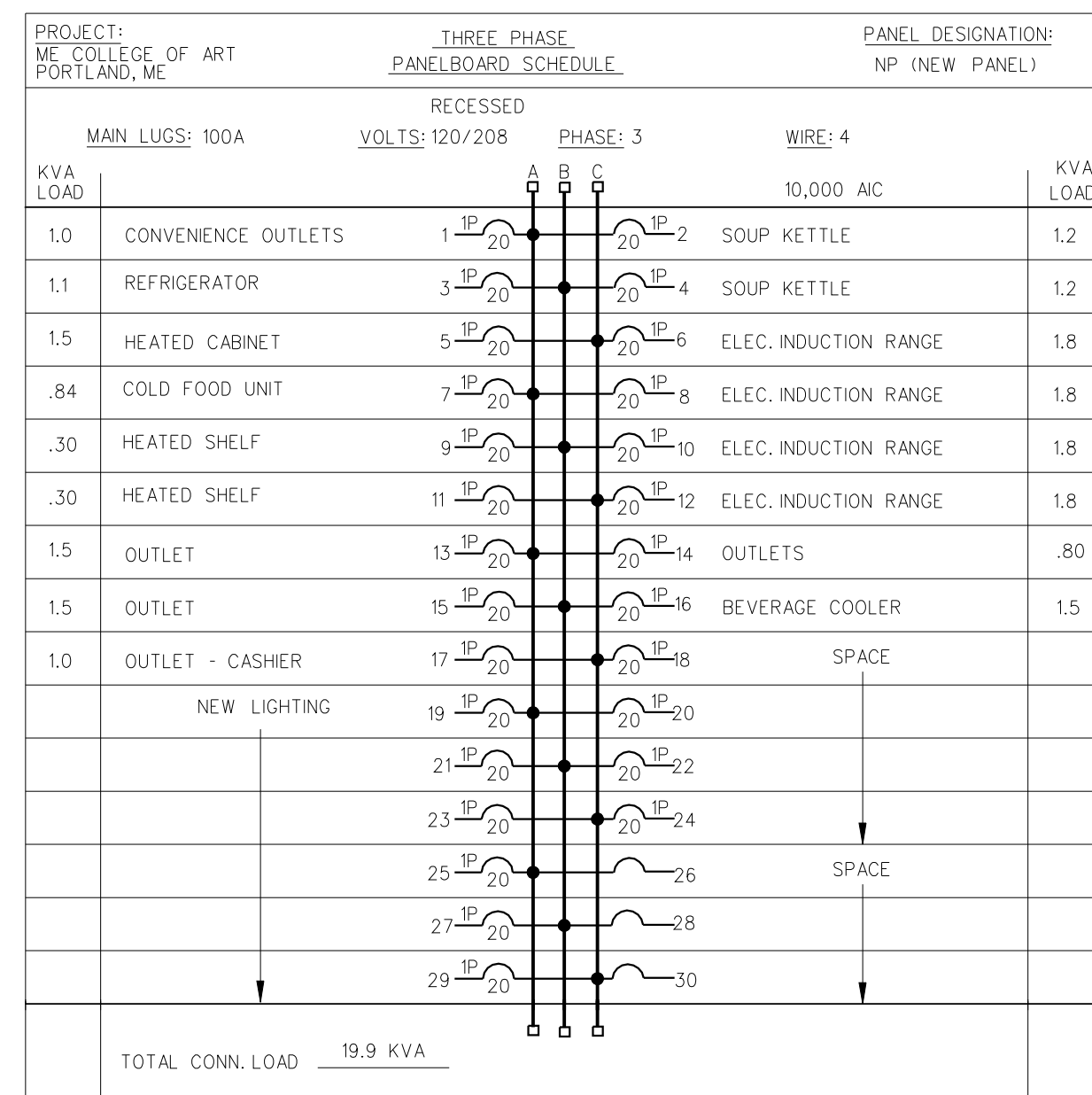
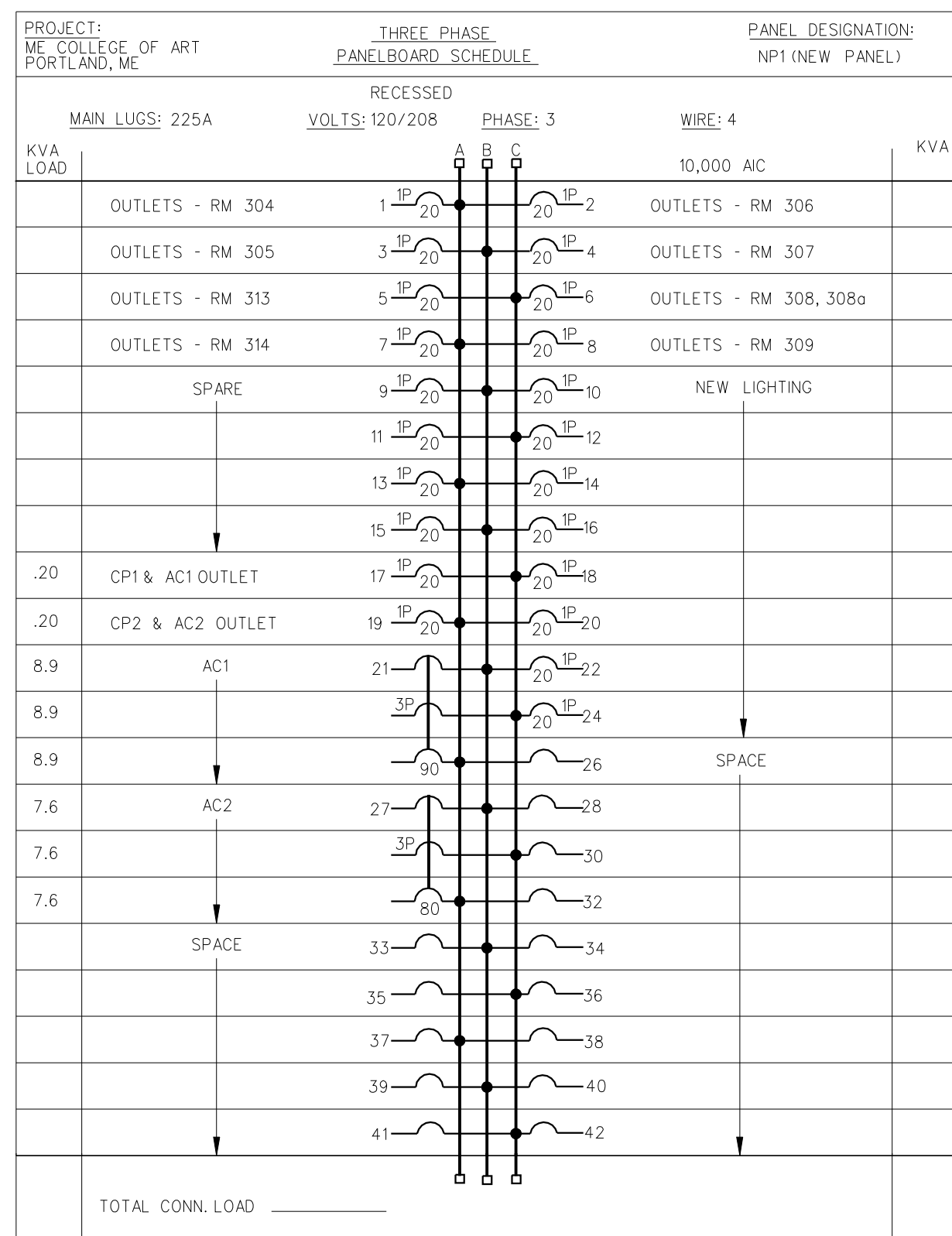
Richard Renner Architects  
 61 Pleasant Street  
 Suite 105  
 Portland, Maine 04101  
 207.773.8889  
 73-8889 fax  
 office@rennerarchitects.com

MAINE COLLEGE OF ART  
 522 CONGRESS STREET

Portland, Maine

Third Floor Power Plan  
 Drawn by: SPD  
 Scale: 1/8"=1'  
 Date: 3.31.08  
 File Name: -  
 RGA Project No. RGA2007.15.00  
 Revised:

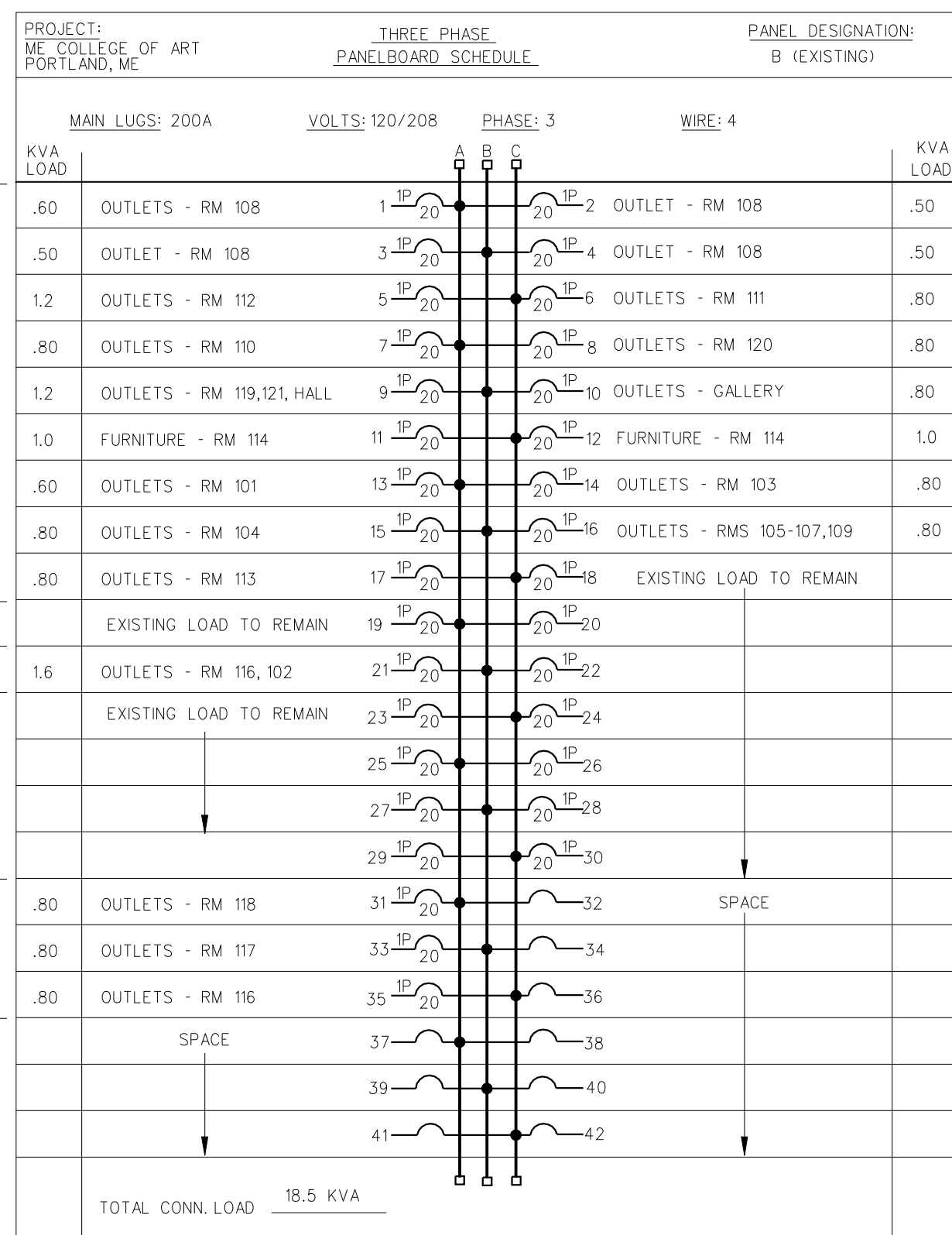
**E1.3**



SYMBOL LEGEND

- PANEL BOARD 120/208, 3PHS, 4WIRE
- ELECTRIC MOTOR DRIVEN EQUIPMENT, HP SHOWN
- JUNCTION BOX
- JUNCTION BOX - FOR FURNITURE BASE FEED WHIP
- VARIABLE FREQUENCY DRIVE - SUPPLIED BY M.C., WIRED BY E.C.
- RACEWAY & WIRING OR MC CABLE RUN CONCEALED IN WALLS/CEILINGS.
- RACEWAY & WIRING RUN EXPOSED
- RACEWAY & WIRING RUN CONCEALED UNDER FLOOR OR BURIED 30" BELOW FINISH GRADE
- HOME RUN TO PANEL - ARROWS INDICATE QUANTITY OF CIRCUITS - NUMERALS DENOTE CIRCUIT NUMBERS
- POWER POLE - WIREMOLD PARTITIONED - POWER/DATA. (1) POWER RECEPTACLE ON EACH SIDE. (1) DATA ON EACH SIDE.
- DUPLEX RECEPTACLE - 20A, 125V SPEC GRADE GROUNDING TYPE, W/ MATCHING PLATE - COLOR BY ARCHITECT - MOUNT 18" AFF. "D" DENOTES 2 DUPLEX OUTLETS IN A 2 GANG BOX
- DUPLEX RECEPTACLE - GROUND FAULT OUTLET 20A, 125V - W/ MATCHING PLATE. - COLOR BY ARCHITECT - FLUSH MOUNTED 45" AFF EXCEPT AS NOTED.
- SMOKE DETECTOR, PHOTOELECTRIC TYPE. "ER" DENOTES 4 WIRE FOR ELEVATOR RECALL
- FIRE ALARM PULL STATION MOUNT 48" AFF
- FIRE ALARM AUDIO/VISUAL, FLUSH MOUNT 6'-8" AFF - "SP" DENOTES SPEAKER NUMERALS DENOTE CANDELA RATING "MH" DENOTES MINI-HORN
- SMOKE DETECTOR, DUCT MOUNTED - FURN. AND WIRED BY E.C. INSTALLED IN DUCTWORK BY M.C.
- FIRE ALARM SYSTEM - SEE SPEC.
- SF DENOTES SURFACE MOUNTED
- WP DENOTES WEATHERPROOF CONSTRUCTION
- FWU DENOTES ELECTRICAL EQUIPMENT FURNISHED WITH UNIT
- CL DENOTES CEILING MOUNTED

Richard Renner Architects  
 61 Pleasant Street  
 Suite 105  
 Portland, Maine 04101  
 207.773.8889  
 73-8889 fax  
 office@rennerarchitects.com



EXISTING BRKR TO BE REUSED FOR NEW LOAD AS INDICATED

EXISTING BRKR TO BE REUSED FOR NEW LOAD AS INDICATED

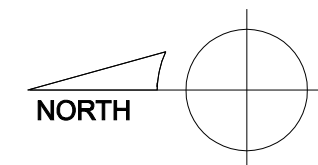
PROVIDE NEW BRKR

EXISTING BRKR TO BE REUSED FOR NEW LOAD AS INDICATED

MAINE COLLEGE OF ART  
 522 CONGRESS STREET  
 Portland, Maine

Elec. Details, Legend & Schedules  
 Drawn by: SPD  
 Scale: 1/8"=1'  
 Date: 3.31.08  
 File Name: -  
 RGA Project No. RGA2007.15.00  
 Revised:

Progress Print  
 Not for Construction  
 4/1/08



E2.1