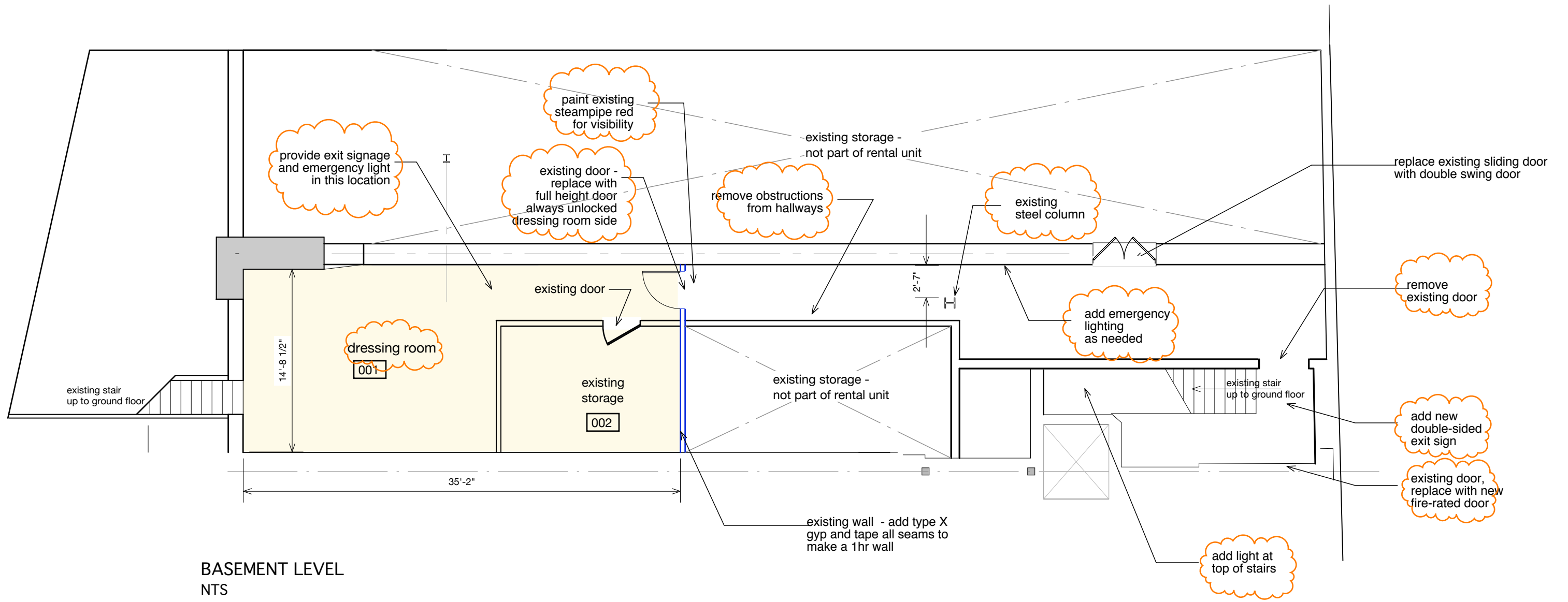


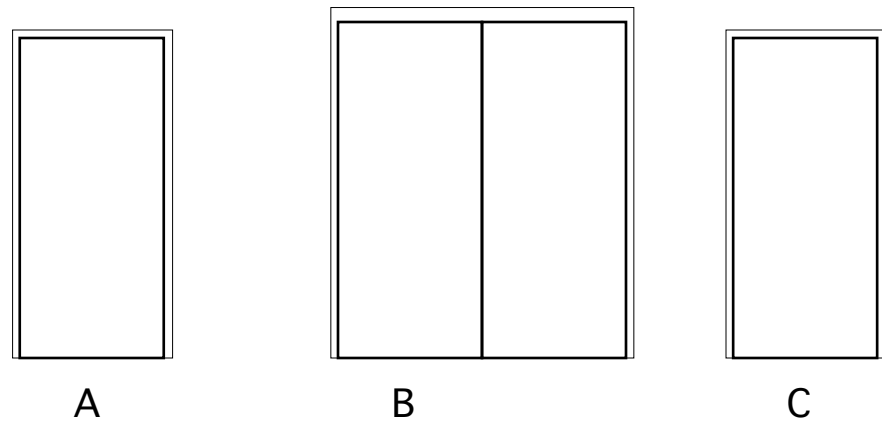
538

CONGRESS ST.



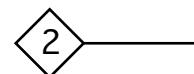
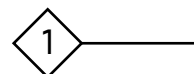
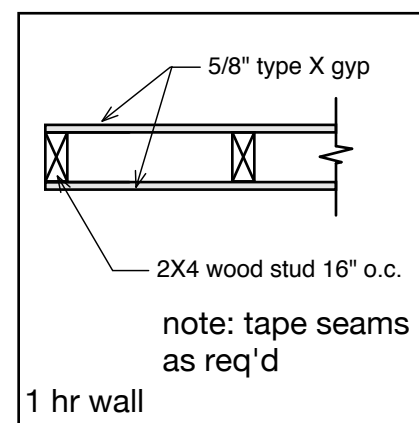
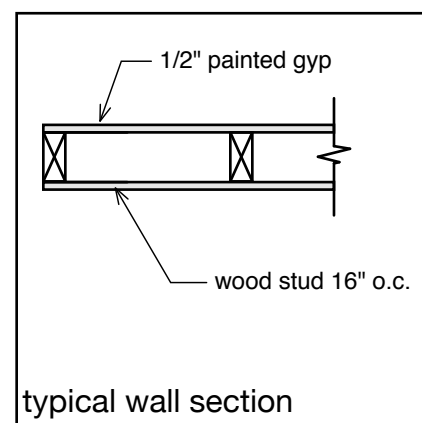
BASEMENT LEVEL
NTS

Total sq. ft. this floor: 580



538 Congress Door Schedule

Door	Room	Door Type	Size	Manufacturer	Type	Material	Finish	Hardware
100.1	entry	Entry (existing)	6'-0" x 7'-0"	---	---	metal & glass	---	Existing - Entry
103.1	exit	fire exit (existing)	3'-0" x 6'-8"	---	---	steel	---	Existing - Exit
103.2	gallery	1-panel (1hr rated)	6'-0" x 7'-0"	TBD	B	steel	Paint	automatic/magnetic closers
104.1	stair	1-panel	3'-0" x 6'-8"	TBD	C	steel		1 hr fire-rated door
105.1	WC	1-panel	3'-0" x 6'-8"	TBD	A	Wood	Paint	Passage
106.1	WC	1-panel	3'-0" x 6'-8"	TBD	A	Wood	Paint	Passage
107.1	Storage	1-panel	3'-0" x 6'-8"	TBD	A	Wood	Paint	locking



Wall Types

