

W.O.#:

SCOPE OF WORK - BARLOMEX

MANUFACTURE & SHIP:
PG 1: ITEM A
ONE SET NCL'S ON PAN BACKER
PG 2: ITEM B
ONE SET FCO'S ON FOAM BACKER
PG 3: ITEM C
ONE SET FCO'S ON FOAM BACKER
PG 4: ITEM D
FCO LETTERS ON FOAM BACKER
PG 5: ITEM E
FCO LETTERS ON FOAM BACKER
PG 6: ITEM F
FCO LETTERS ON FOAM BACKER

SCOPE OF WORK - BARLO

RECEIVE & INSTALL ABOVE ITEMS

SCOPE OF WORK - SIGN/SUB

GENERAL NOTES

COLORS

LETTERS

Returns: BRONZE BEA
Face: 7528 WHITE PLEX
Trim: 1" BRONZE TRIM
Neun: 0500 WHITE
PAN BACKER: PTM PMS 243 DK GREEN

SIGN DISPOSITION

Store for Barlo Leave @ Site Dispose
Store for Customer Chargeable N/A

ALL COLORS ARE FOR REPRESENTATION ONLY.
SEE ACTUAL SAMPLES FOR COLOR MATCH.
ALL FINISHES TO BE SEMI-GLOSS UNLESS OTHERWISE NOTED

Underwriters Laboratories Inc. @

GENERAL INFO.

Qty: ONE Sq. Ft. SEE DWG
S/F D/F ILL. Non-ILL

NEON LETTERS

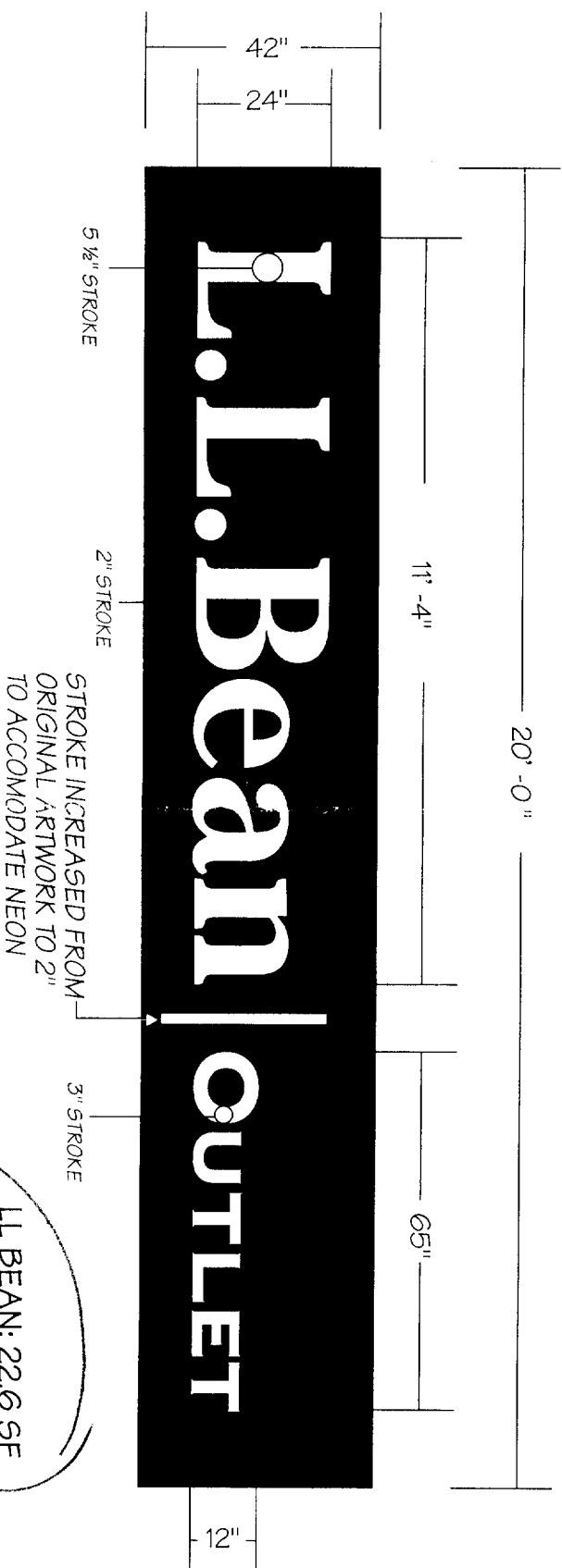
Interior Exterior Face-Lit Back-Lit Drain Holes: N
Face Mat: PLEX Th: 3/16" Return Mat: ALUM Th: .063 Depth: 5"
Back Mat: Mill Wht BEA Lexan Th: Mylar Size: 1" 2" Metal:
Mounting: Nutsert Thru Back < Clip Other:
UL Sticker Location: Std Top Only Rows of Neon: MM: 15
Housings: Glass PK's Dbl Backs Pass Thru N/A
Trans. Location: R/motg S/Cont. Raceway 30MA 50MA Standard Electronic
Type:

Date Released for production:
Rev # Date Description By: To Shop To Max
Engineering: Production: Estimating:
Check By: Survey: Sales:

Job Name: LL BEAN OUTLET
Location: 542 Congress St. PORTLAND, ME.
Design Specifications Accepted By:
Client:
Landlord:
Date: 3/23/06
Sales Rep: BILL B
Drawn By: LT

FOR OFFICE USE
Proposal Drawing
Deposit L.L.
Permits Crew W/O
Signature Date

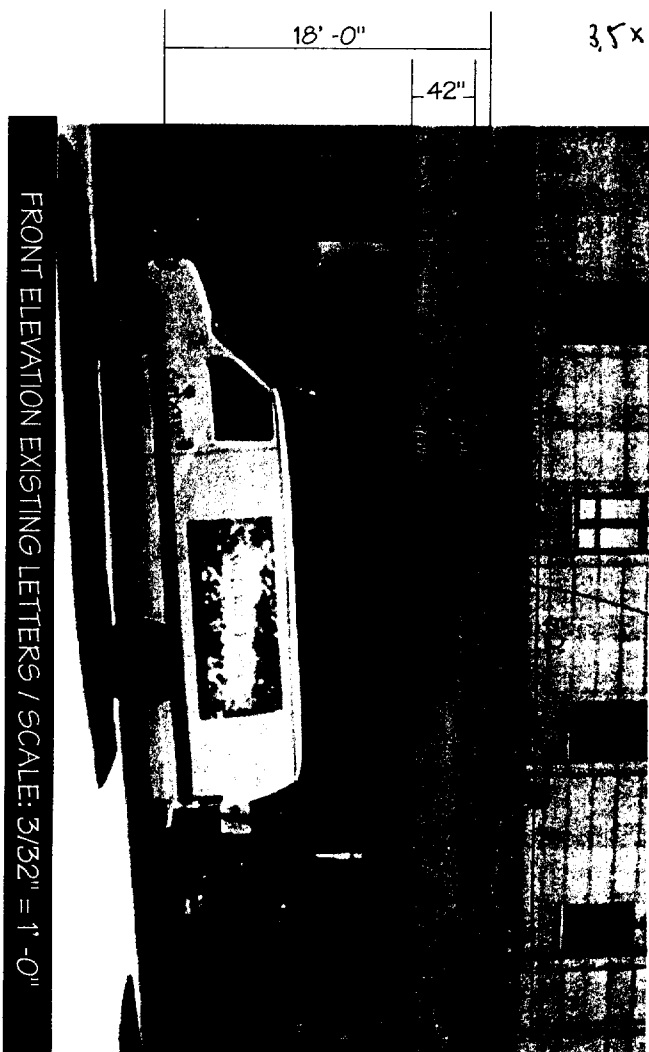
ITEM A NCL'S ON PAN BACKER
SCALE: 3/8" = 1'-0"



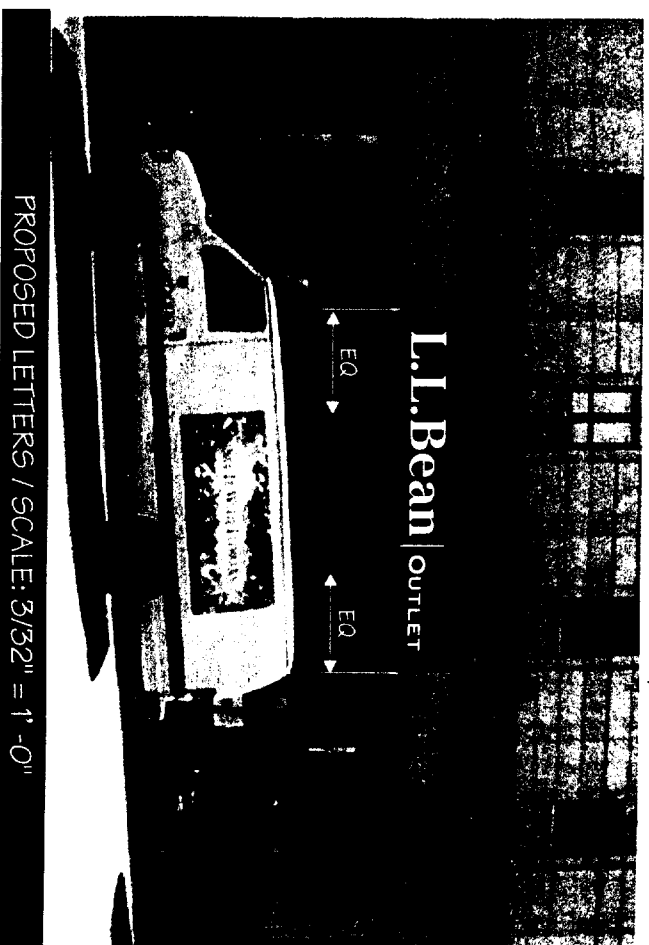
STROKE INCREASED FROM ORIGINAL ARTWORK TO 2" TO ACCOMMODATE NEON

LL BEAN: 22.6 SF
OUTLET: 5.4 SF
BAR: .4 SF

Handwritten initials and notes: 28.4 ft, 20 ft



FRONT ELEVATION EXISTING LETTERS / SCALE: 3/32" = 1'-0"



PROPOSED LETTERS / SCALE: 3/32" = 1'-0"

CENTER ON FACADE OVER DOORS (REQUESTED BY CUSTOMER)

Handwritten signature: Cooper

Table with columns: ELECTRIC (Circuits, Amp, Voltage, U.L.), STEEL (Size, Length, W. Thickness, Stub Length, W. Thickness, PLATE, GUSSETS, ANCHOR BOLTS), Existing, Required.

CONCRETE BASE
Depth Width Length Yds.
MATERIAL OPTIONS & ESTIMATE
BARLO:

MATERIAL OPTIONS & ESTIMATE
BARLOMEX
SALES APPROVED DWG
3/23/06
Date Rep

PAPERS SIGNS
158 Greeley St. Hudson, NH 03051
(603) 882-2638 Fax: (603) 882-7880
File Name: Portland 051239(J)
B-05-12-39 REV 2 SHEET 1 OF 6

W.O.#:

SCOPE OF WORK - BARLOMEX
 MANUFACTURE & SHIP:
 PG 2: ITEM B
 ONE SET FCO'S ON PAN BACKER

SCOPE OF WORK - BARLO
 RECEIVE & INSTALL ABOVE ITEMS

SCOPE OF WORK - SIGN/SUB

GENERAL NOTES

LETTERS
 1/4" MATTE WHITE PLEX
 PAN BACKER: PTM 45 343 DK GREEN

SIGN DISPOSITION
 Store for Barlo Leave @ Site Dispose
 Store for Customer Chargeable N/A

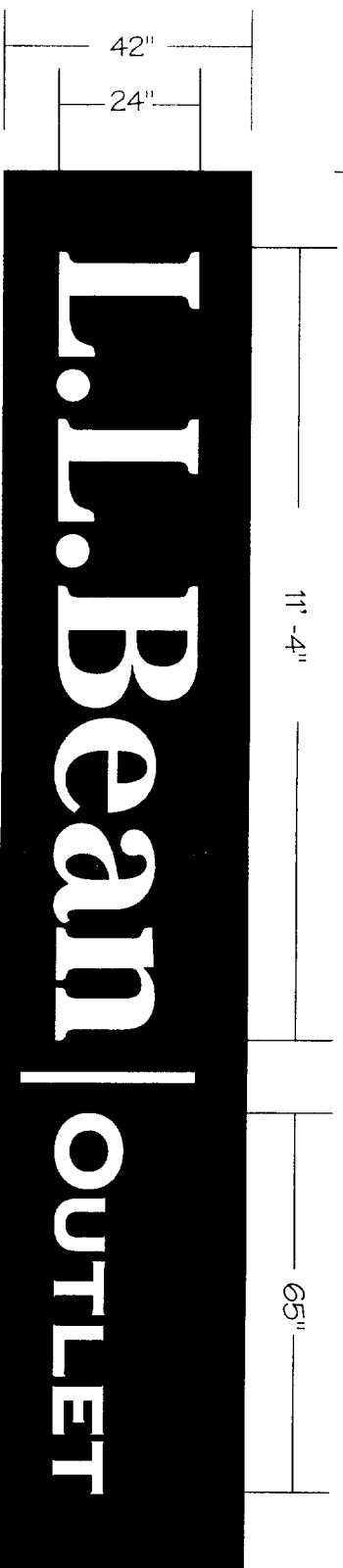
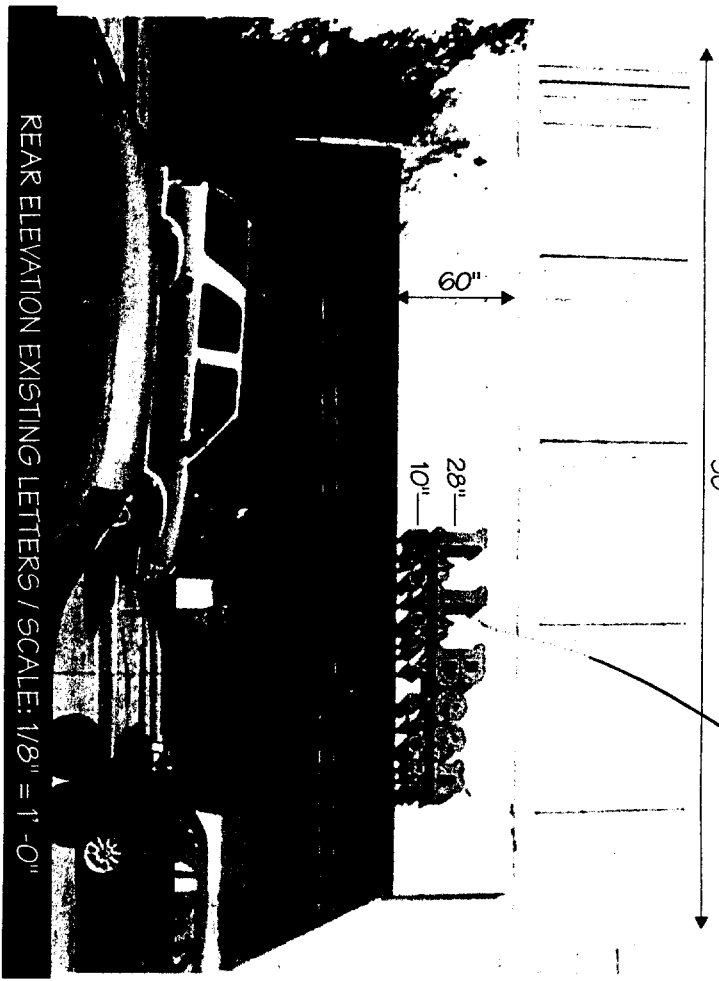
ALL COLORS ARE FOR REPRESENTATION ONLY.
 SEE ACTUAL SAMPLES FOR COLOR MATCH.
 ALL FINISHES TO BE SEMI-GLOSS UNLESS OTHERWISE NOTED

UL Underwriters Laboratories Inc.®

GENERAL INFO.

Qty: ONE Sq. Ft. SEE DWG
 S/F D/F ILL. Non-ILL.

10' x (115) 125" = 1350 9.554 36.114
 21' x 135" = 3864 2183 74
 50' 12' x 35 = 420



ITEM B FCO LETTERS ON PAN BACKER
 SCALE: 3/8" = 1'-0"

LL BEAN: 22.6 SF
 OUTLET: 5.4 SF
 BAR: .4 SF
 28.4 SF

NEON LETTERS

Interior	Exterior	Face-Lit	Back-Lit	Drain Holes:	Y	N
Face Mat:	Th:	Return Mat:	Th:	Depth:		
Back Mat: Mill Whit BEA Lexan	Th:	Mylar Size: 1" 2" Metal:				
Mounting: Nutsert	Thru Back	< Clip	Other:			
UL Sticker Location: Stnd	Top Only	Rows of Neon:	MM:			
Housings: Glass	Pk's	Dbl Backs	Pass Thru	N/A		
Trans. Location: Remote	S/Cont.	Raceway	30MA	60MA	Standard	Electronic
Type:						

Date Released for production:	By:
Rev#	Date
Description	
Production:	Estimating:
Check By:	Survey:
Engineering:	Print Approval Date
Production:	Estimating:
Check By:	Survey:

Job Name:	LL BEAN OUTLET
Location:	542 Congress St. PORTLAND, ME.
Design Specifications Accepted By:	
Client:	
Landlord:	
Sales Rep:	BILL B
Date:	3/23/06

PAPERS SIGNS
 158 Greeley St., Hudson, NH 03051
 (603) 882-2638 Fax (603) 882-7680

File Name: Portland 051239(J)
B-05-12-39 REV 2
 SHEET 2 OF 6

ELECTRIC	Existing	Required
Circuits		
Amp		
Voltage		
U.L.		

STEEL	Existing	Required
Size		
Length		
W. Thickness		
Stub Size		
Stub Length		
W. Thickness		
PLATE	W	L
	Th	Th
GUSSETS	W	L
	Th	Th
ANCHOR BOLTS	L	HOOK
	Dia	Dia

BOLLARDS
Qty: _____
Size _____

CONCRETE BASE
Depth _____
Width _____
Length _____
Yds. _____

MATERIAL OPTIONS & ESTIMATE
BARLO:

MATERIAL OPTIONS & ESTIMATE
BARLOMEX
SALES APPROVED DWG
Date: 3/31/06
Rep: [Signature]

FOR OFFICE USE
<input type="checkbox"/> Proposal <input type="checkbox"/> Drawing
<input type="checkbox"/> Deposit <input type="checkbox"/> L.L.
<input type="checkbox"/> Permits <input type="checkbox"/> Crew W/O
Signature _____ Date _____

W.O.#: _____

SCOPE OF WORK - BARLOMEX

MANUFACTURE & SHIP:
 PG 3: ITEM C
 ONE SET FCO'S ON PAN BACKER

SCOPE OF WORK - BARLO

RECEIVE & INSTALL ABOVE ITEMS

SCOPE OF WORK - SIGN/SUB

GENERAL NOTES

LETTERS

1/4" MATTE WHITE PLEX
 PAN BACKER: PTM PMS 343 DK GREEN

SIGN DISPOSITION

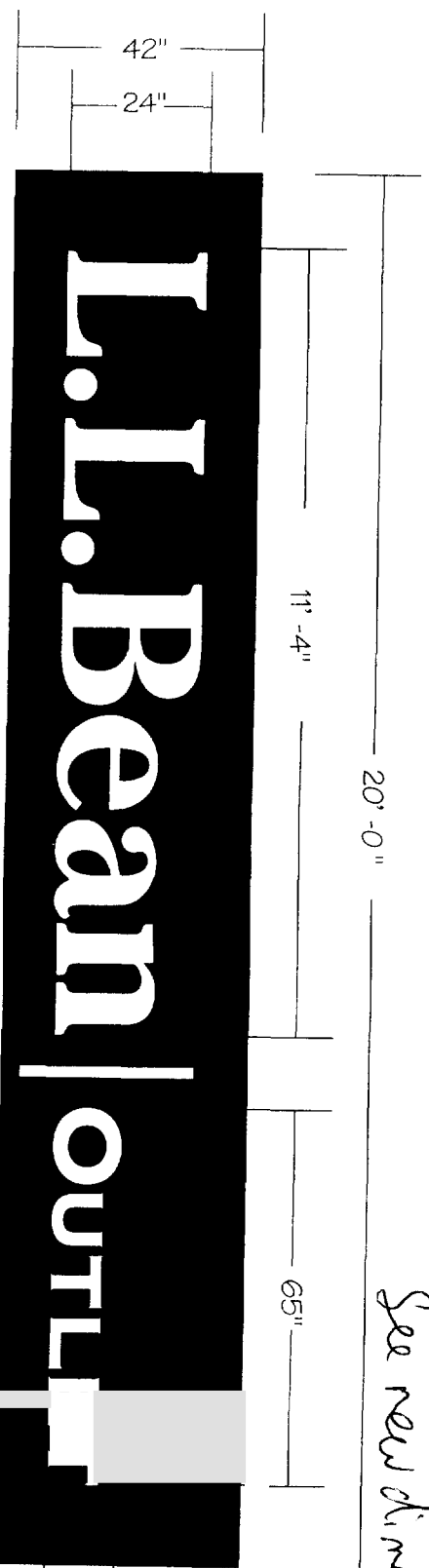
- Store for Barlo
- Leave @ Site
- Dispose
- Store for Customer
- Chargeable
- N/A

ALL COLORS ARE FOR REPRESENTATION ONLY. SEE ACTUAL SAMPLES FOR COLOR MATCH. ALL FINISHES TO BE SEMI-GLOSS UNLESS OTHERWISE NOTED

UL Underwriters Laboratories Inc.®

GENERAL INFO.

Qty: ONE
 Sq. Ft. SEE DWG
 S/F D/F ILL. Non-ILL



ITEM C FCO LETTERS ON PAN BACKER
 SCALE: 3/8" = 1'-0"

LL BEAN: 22.6 SF
 OUTLET: 5.4 SF
 BAR: .4 SF
 24.4 ft

NEON LETTERS

Interior	Exterior	Face-Lit	Back-Lit	Drain Holes:	Y	N
Face Mat:	Th:	Return Mat:	Th:	Depth:		
Back Mat:	Mill Whit BEA	Lexan	Th:	Mylar Size:	1" 2" Metal:	
Mounting:	Nutsert	Thru Back	< Clip	Other:		
UL Sticker Location:	Stand	Top Only	Rows of Neon:	MM:		
Housings:	Glass	Pk's	Del.Back	Pass Thru	N/A	
Trans. Location:	Remote	S/Cont.	Raceway	30MA	60MA	Standard Electronic
Type:						

Date Released for production:	By:	To Shop	To Mex
Rev. #	Date	Description	
Engineering:	Production:	Estimating:	
Check By:	Survey:	Sales:	
Job Name:	LL BEAN OUTLET	Location:	542 Congress St. PORTLAND, ME.
Client:		Design Specifications Accepted By:	
Landlord:		Drawn By:	LT
		Sales Rep:	BILL B
		Date:	3/23/06

RAPID SIGNS
 158 Greeley St., Hudson, NH 03051
 (603) 882-2638 Fax (603) 882-7580

File Name: Portland 051239(J)
B-05-12-39 REV 2
 SHEET 3 OF 6

ELECTRIC	Existing	Required	
Circuits			
Amp			
Voltage			
U.L.			
STEEL	Existing	Required	
Size			
Length			
W. Thickness			
Stub Size			
Stub Length			
W. Thickness			
PLATE	W	L	Th
GUSSETS	W	L	Th
ANCHOR BOLTS	L	HOOK	Dia
BOLLARDS			
Qty.	Size		
CONCRETE BASE			
Depth	Width	Length	
	Yds.		

MATERIAL OPTIONS & ESTIMATE
 BARLO:
 SALES APPROVED DWG
 3/3/06
 Date: _____ Rep: _____

FOR OFFICE USE

Proposal Drawing
 Deposit L.L.
 Permits Crew W/O

Signature: _____ Date: _____