

NOTE: INTERSTITIAL SPACE ABOVE ACT CEILING TO BE LIMITED COMBUSTIBLE. AUTOMATIC SPRINKLER PROTECTION TO REMAIN AS IS.

NOTE: SPRINKLERS INDICATED ON PLAN ARE ONLY RELOCATED OR NEW SPRINKLERS. EXISTING SPRINKLER PROTECTION TO REMAIN AS IS.

NOTE TO FITTER: THIS MATERIAL NOT LISTED PENDING ACTUAL LAYOUT.

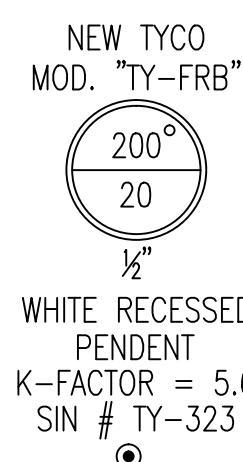
LIMIT OF WORK LINE

GENERAL NOTES

- SCOPE OF WORK: RENOVATE EXISTING WET SPRINKLER SYSTEM IN DIVERSIFIED COMMUNICATION TENANT SPACES LOCATED ON BSMT, 1ST, 2ND, & 3RD FLOORS. TO ACCOMMODATE NEW FLOOR PLANS. EXISTING SPRINKLER PROTECTION IN ALL OTHER PORTIONS OF THE BUILDING TO REMAIN AS IS.
- ALL WIRING TO BE DONE BY OTHERS
- ALTHOUGH NOT SPECIFIED, SOME SPRINKLER HEADS HAVE BEEN SHOWN @ CENTERLINE OF TILE. ACTUAL ORIENTATION OF HEADS WITH RESPECT TO CEILING COMPONENTS WILL VARY ACCORDING TO FIELD CONDITIONS.
- SPRINKLER SYSTEM RENOVATION TO COMPLY WITH NFPA PAMPHLET # 13 2013 EDITION.
- ALL DIMENSIONS ARE SHOWN FOR GENERAL LOCATION OF SPRINKLER HEADS ; PIPING MAY VARY TO SUIT ACTUAL FIELD CONDITIONS.
- EXISTING SPRINKLER MAINS & LINES TO REMAIN. NEW PENDENT HEADS TO BE SUPPLIED FROM EXISTING OUTLETS.
- ACOUSTICAL CEILING TILE (ACT) TO BE LISTED NON-COMBUSTIBLE WITH UL FLAME SPREAD OF LESS THAN 25.
- OCCUPANCY DESCRIPTION AND CLASSIFICATION: OFFICE AREAS: LIGHT HAZARD STORAGE AREAS: ORDINARY HAZARD GROUP 1 STORAGE OF MATERIAL SHALL NOT EXCEED 8'-0" IN HEIGHT.
- F.F. C INDICATES FINISH FLOOR UP TO CENTERLINE OF PIPE.
- F.F. D. INDICATES FINISH FLOOR TO DECK
- INDICATES NEW SPRINKLER PIPE
- INDICATES EXISTING SPRINKLER PIPE
- A.S. = AUTOMATIC SPRINKLER

### FIRE SPRINKLER PLAN - FIRST FLOOR

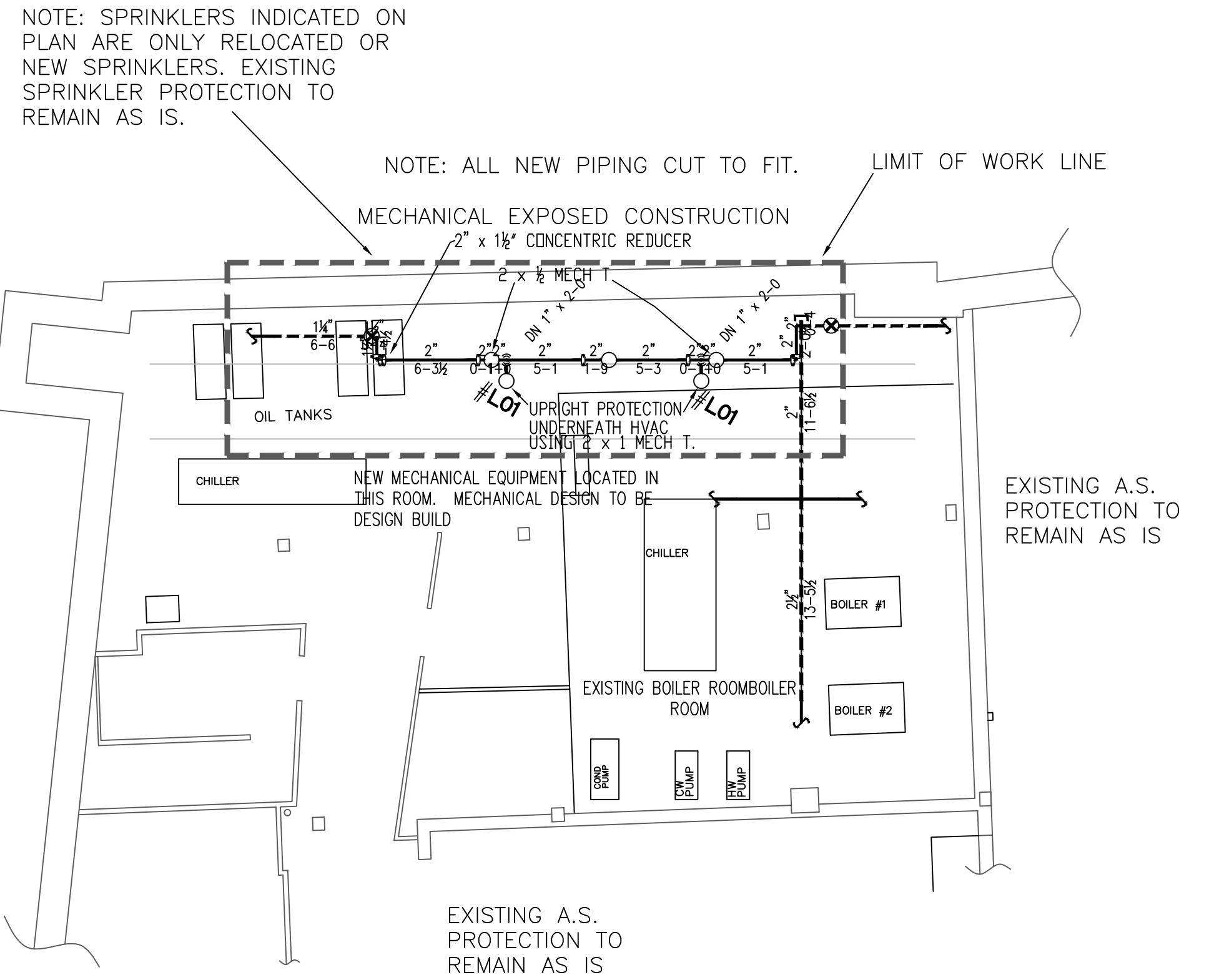
SCALE: 1/8"=1'-0"  
 AREA PROTECTED: 2,400 SQ.FT.  
 FINISH FLOOR ELEVATION : FIRST FLOOR  
 COLOR CODE: BLUE



NOTE: AREA PROTECTED AND HEAD COUNT FOR DIVERSIFIED COMMUNICATION SECOND FLOOR SPACE ONLY TO LIMIT OF WORK LINE.

NOTE: HEADS DEPICTED ON PLAN (NEW & RELOCATED) ARE FOR AREAS THAT REQUIRE HEAD INSTALLATION TO ACCOMMODATE NEW FLOOR PLAN. EXISTING HEADS TO REMAIN AS IS ARE NOT SHOWN.

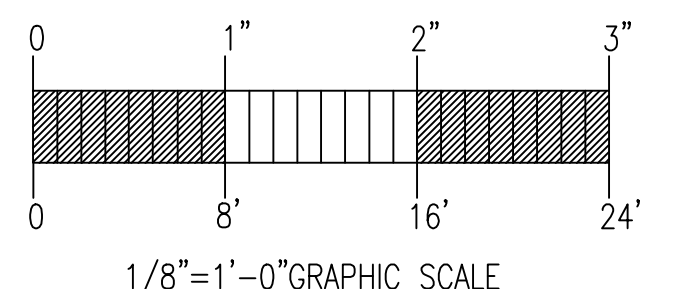
NOTE: NOT ALL SPRINKLER PIPE DEPICTED IN PLAN. ABOVE CEILING PROTECTION TO REMAIN AS IS.



### FIRE SPRINKLER PLAN - BASEMENT

SCALE: 1/8"=1'-0"  
 AREA PROTECTED: 528 SQ.FT.  
 FINISH FLOOR ELEVATION : BASEMENT FLOOR  
 COLOR CODE: YELLOW

NOTE: AREA PROTECTED AND HEAD COUNT FOR BASEMENT LEVEL ONLY TO LIMIT OF WORK LINE.



GENERAL NOTES	DATE	REVISIONS	REQUIRED APPROVALS	DIVERSIFIED COMMUNICATION WELLNESS CENTER 121 FREE ST. PORTLAND	FIRE SPRINKLER PLANS & DETAILS
SPRINKLER SYSTEM RENOVATION TO COMPLY WITH NFPA PAMPHLET # 13 (2013)			OWNER / ARCHITECT STATE FIRE MARSHAL PORTLAND FIRE DEPARTMENT	CONTRACT WITH: WRIGHT-RYAN CONSTRUCTION	DWG. NO. 1 OF 2
NEW BRANCH LINE PIPING TO BE BLACK SCHEDULE # 40 JOINED BY THREADED DUCTILE IRON FITTINGS			DRAWN BY: RJP NICET LEVEL: CERT. #	JOB NUMBER AU-5118-13	SCALE AS NOTED
NEW MAIN PIPING TO BE SCHEDULE # 10 BLACK WITH GROOVED ENDS & WELDED OUTLETS JOINED BY MECHANICAL COUPLINGS			CHECKED BY: WAF NICET LEVEL III CERT. # 095574	DATE 1/14/2014	
OWNER TO PROVIDE SUFFICIENT HEAT THROUGHOUT BUILDING TO PREVENT FREEZING OF WATER FILLED SPRINKLER PIPING AND EQUIPMENT. ( 40' F )			CONTRACTOR LICENSE # 101 CONTRACTOR RMS # 368		