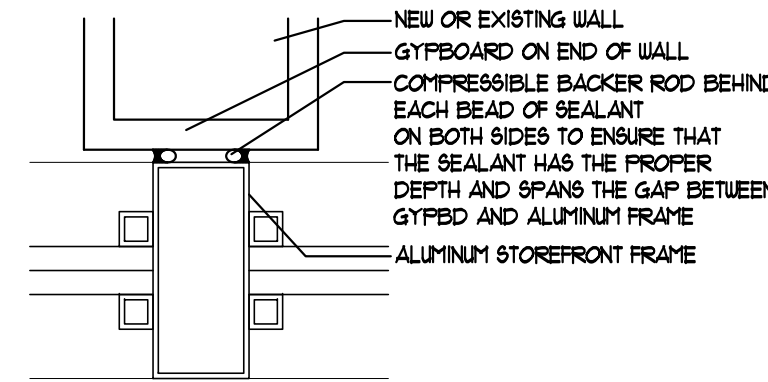


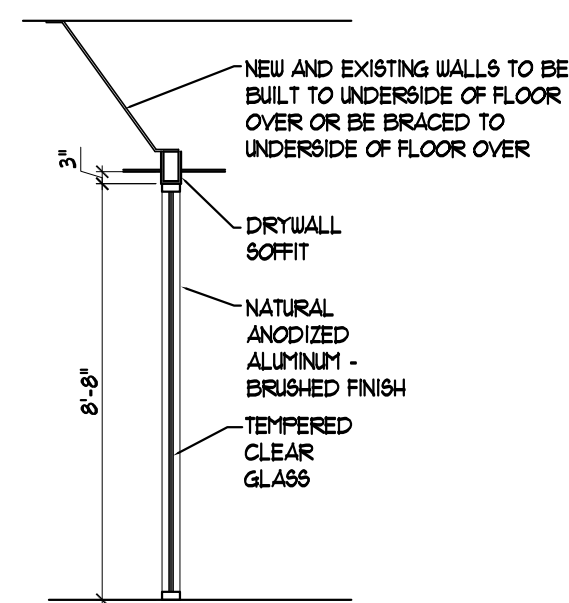
KEY PLAN

N.T.S.

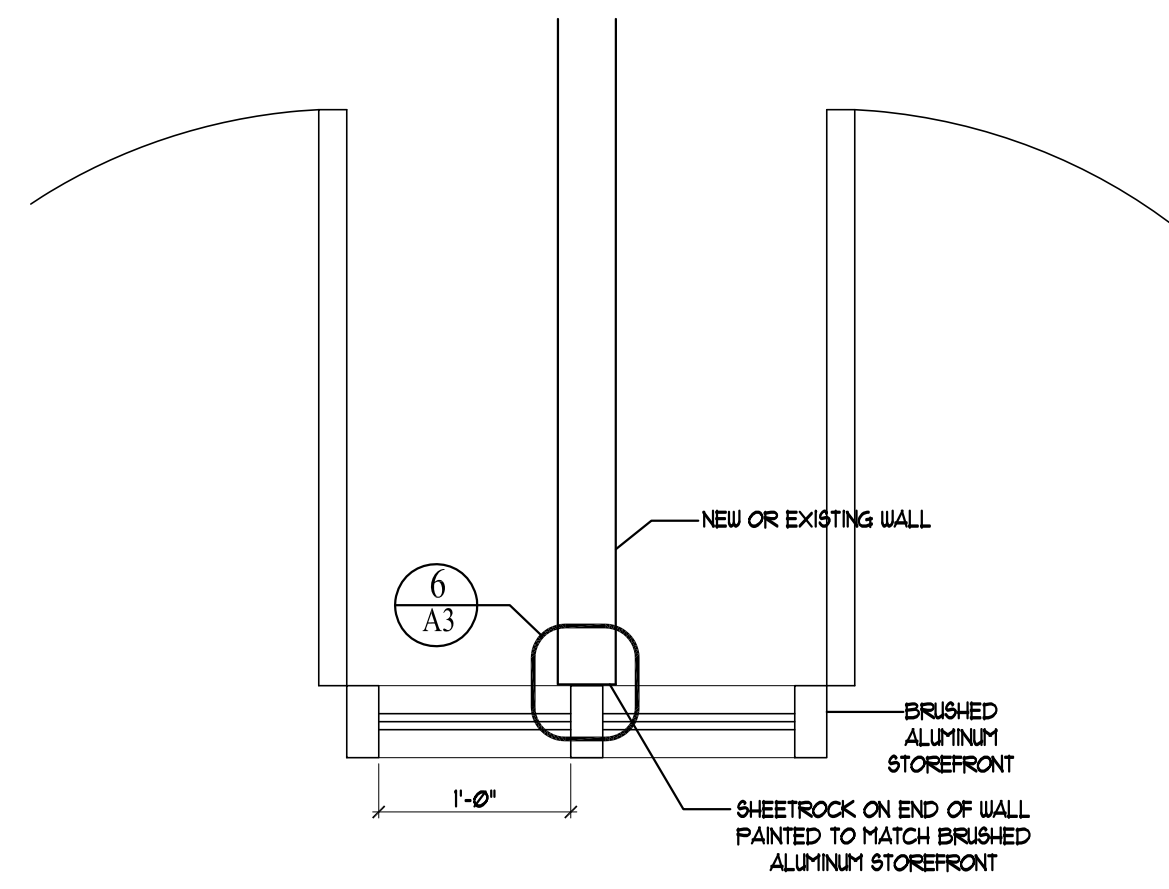
RCP LEGEND	
	NEW 24x24 ACT TILES IN NEW GRID SYSTEM
	NEW 24x24 ACT TILES AND NEW CEILING LIGHT FIXTURES IN EXISTING GRID SYSTEM
	NEW 24x48 CEILING LIGHT FIXTURE
	NEW DIFFUSER
	NEW SINGLE SWITCH



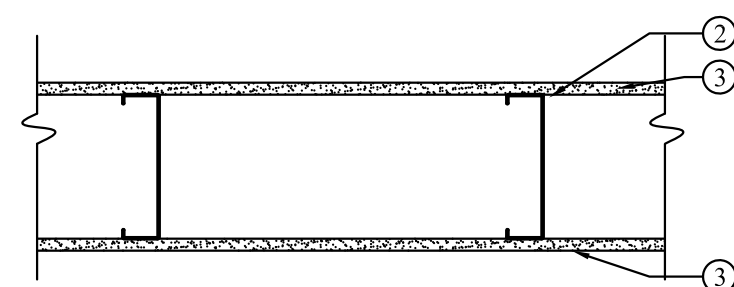
6 TYPICAL DETAIL OF JUNCTION BETWEEN STOREFRONT AND WALL
SCALE 3" = 1'-0"



3 TYPICAL STOREFRONT SECTION
SCALE 1/4" = 1'-0"



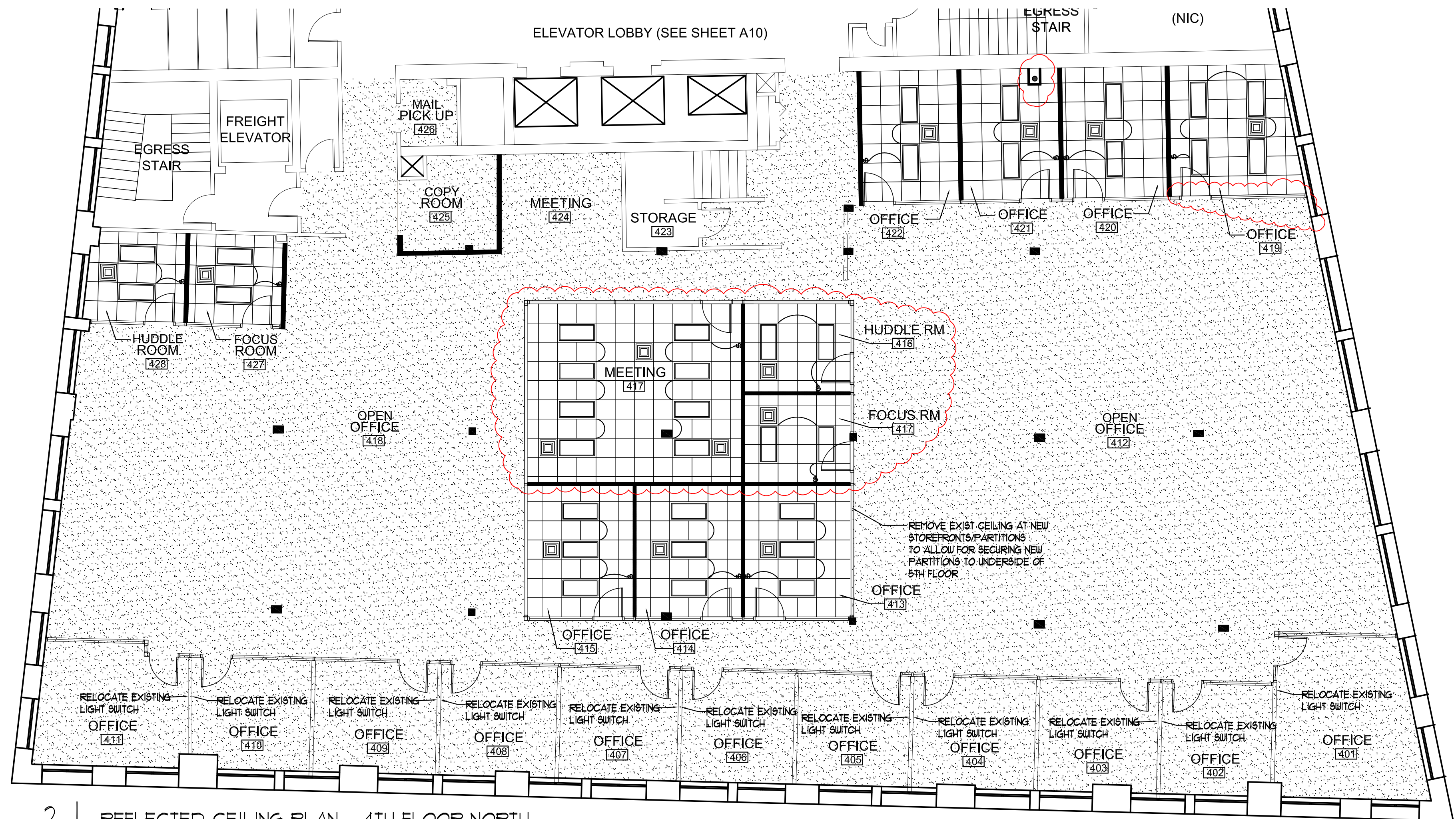
4 TYPICAL DETAIL OF JUNCTION BETWEEN STOREFRONT AND WALL
SCALE 1" = 1'-0"



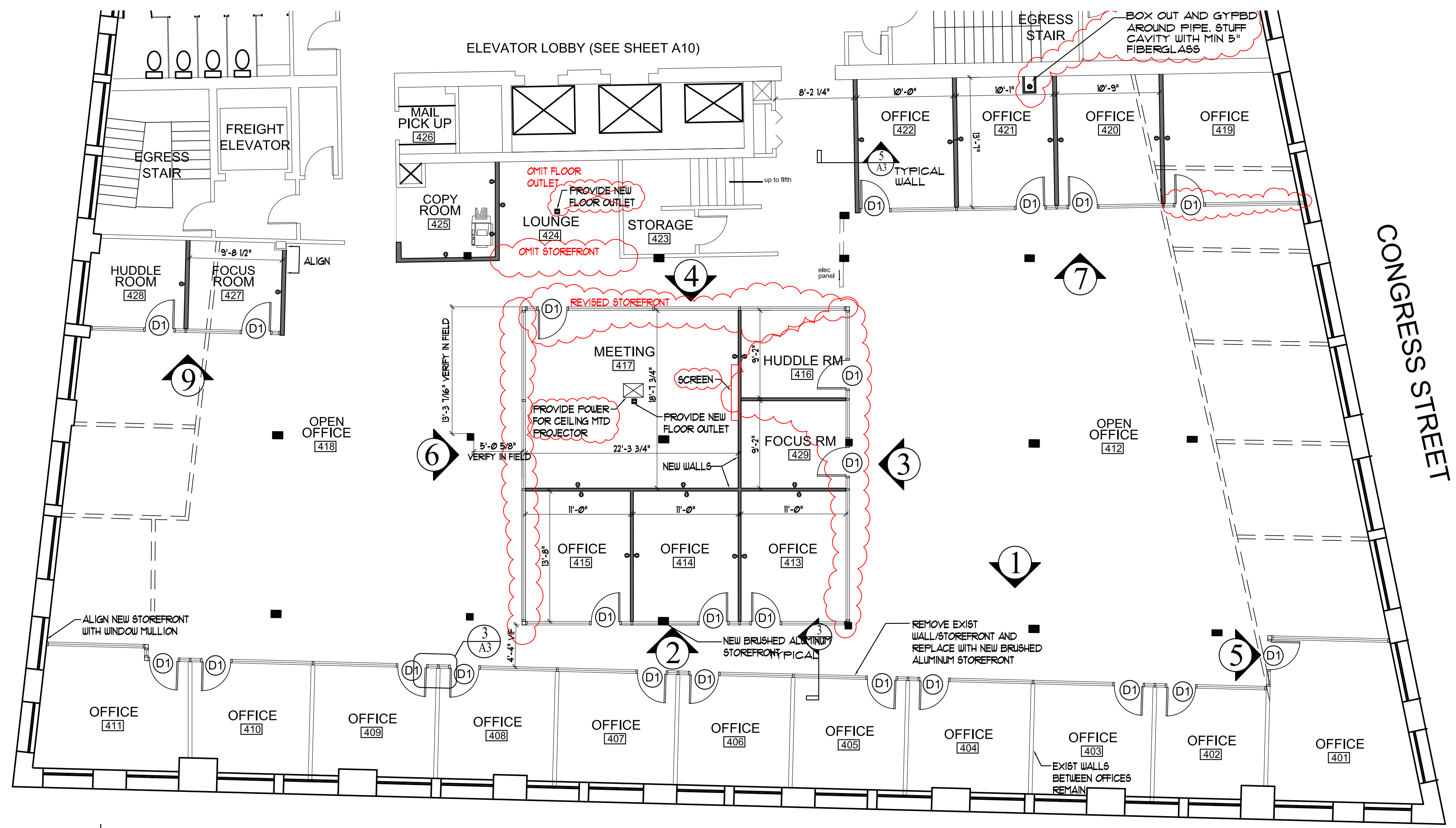
5 TYPICAL UNRATED INTERIOR PARTITION

UNRATED PARTITION WALL ASSEMBLY

- Floor and Ceiling Runners** — Channel shaped, attached to floor and ceiling in two rows, a min 1 in. apart, with steel fasteners spaced 24 in. OC. Runners fabricated from min No. 25 MSG galv steel, 1-1/4 in. deep and 6 in. wide.
- Steel Studs** — Channel shaped, supplied with cutouts, friction-fitted into floor and ceiling runners and spaced a max 24 in. OC. Studs cut 1/2 in. less than assembly height and evenly staggered between the two rows of floor and ceiling runners. Studs fabricated from min No. 25 MSG galv steel, min 6 in. wide by 1-5/8 in. deep with 3/8 in. folded back return flange legs.
- Gypsum Board** — 5/8 in. thick, 4 ft wide, attached to wood studs with Type S steel screws spaced 8 in. OC. along edges of board and 12 in. OC in the field of the board. Joints oriented vertically and staggered on opposite sides of the assembly 48 in. OC.
- Joint Tape and Compound** — Vinyl, dry or premixed joint compound, applied in two coats to joints and screw heads; paper tape, 2 in. wide, embedded in first layer of compound over all joints. As an alternate, nominal 3/32 in. thick gypsum veneer plaster may be applied to the entire surface of C classified veneer baseboard. Joints reinforced. Paper tape and joint compound may be omitted when gypsum boards are supplied with square edges.



2 REFLECTED CEILING PLAN - 4TH FLOOR NORTH



1 FLOOR PLAN - 4TH FLOOR NORTH
SCALE: 1/8" = 1'-0"



Architect:
ARCHETYPE architects
48 Union Wharf Portland, Maine 04101
(207) 772-6022 Fax (207) 772-4056

Project:
DIVERSIFIED COMMUNICATIONS
PORTLAND, MAINE 04101

Revisions:

Date: 4 December 2012
Scale: AS NOTED
4TH FLOOR NORTH FLOOR PLAN AND REFLECTED CEILING PLAN

A3