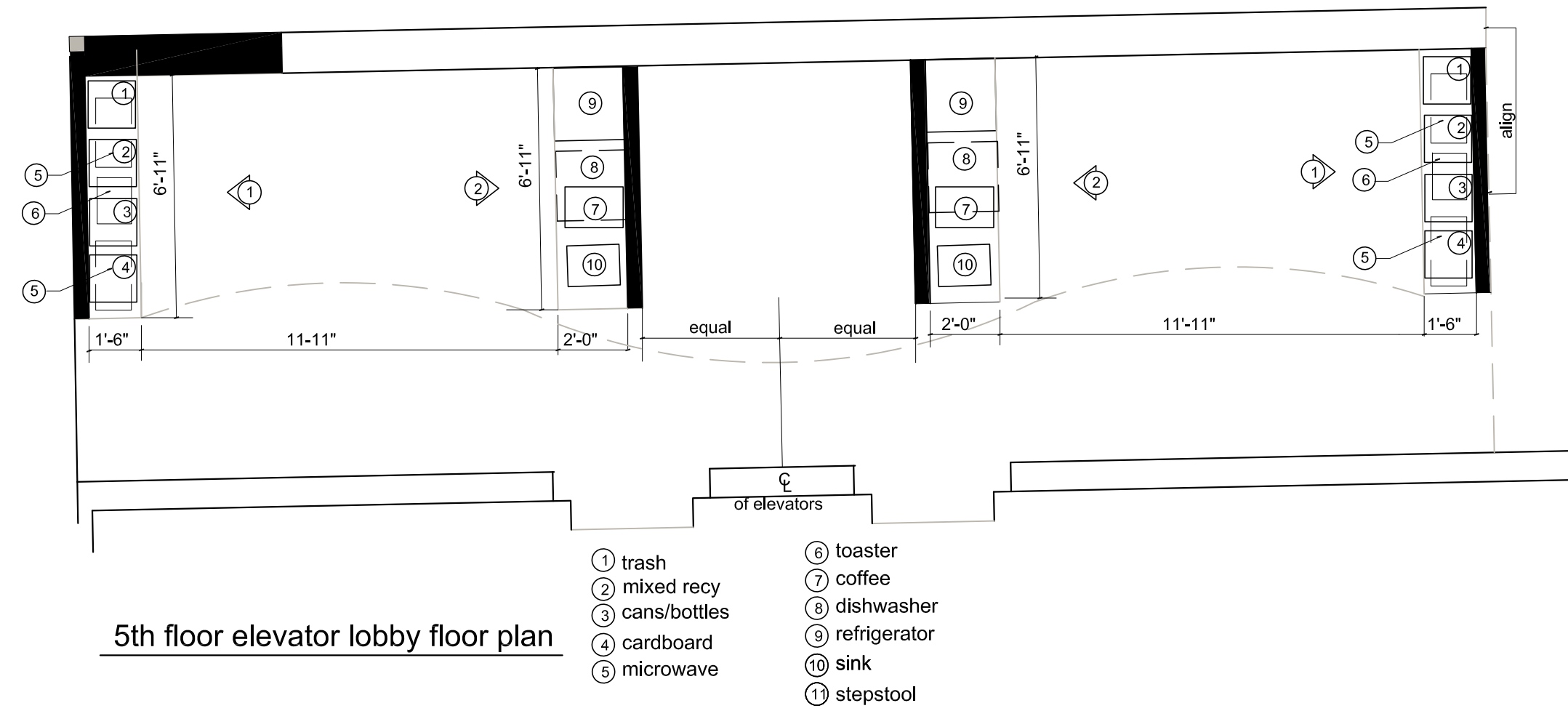
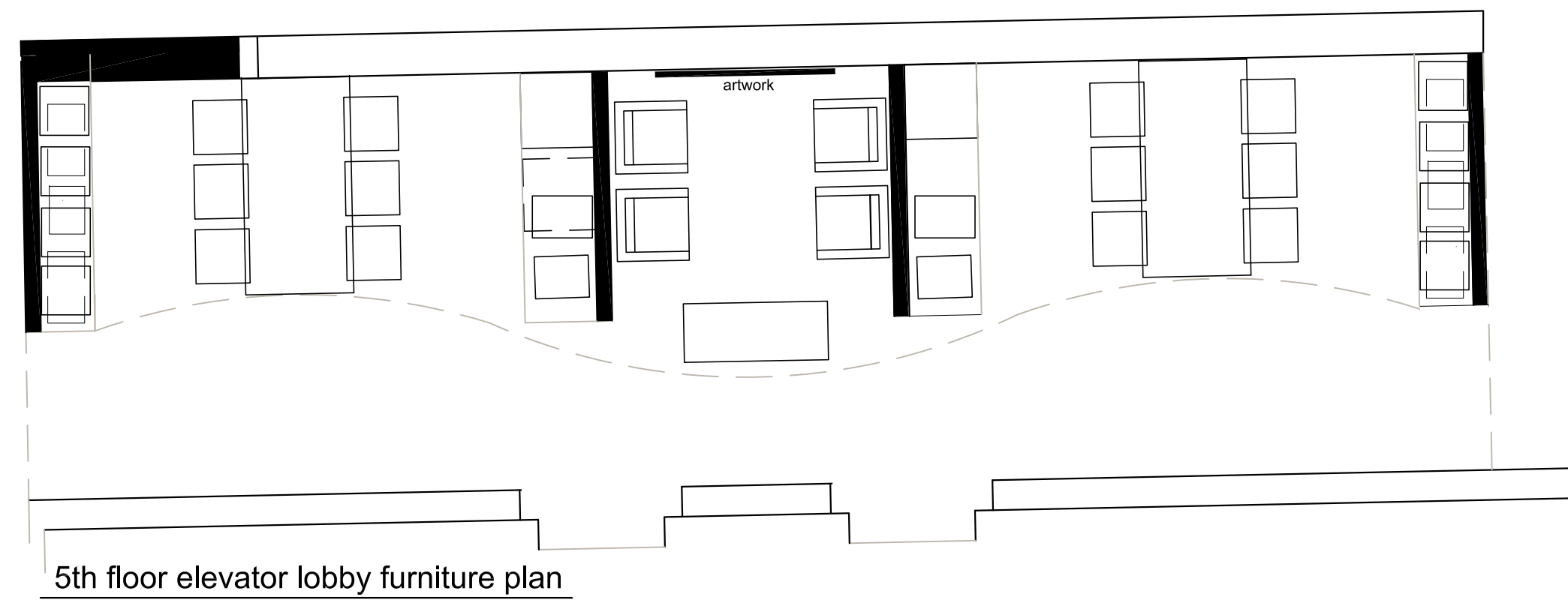


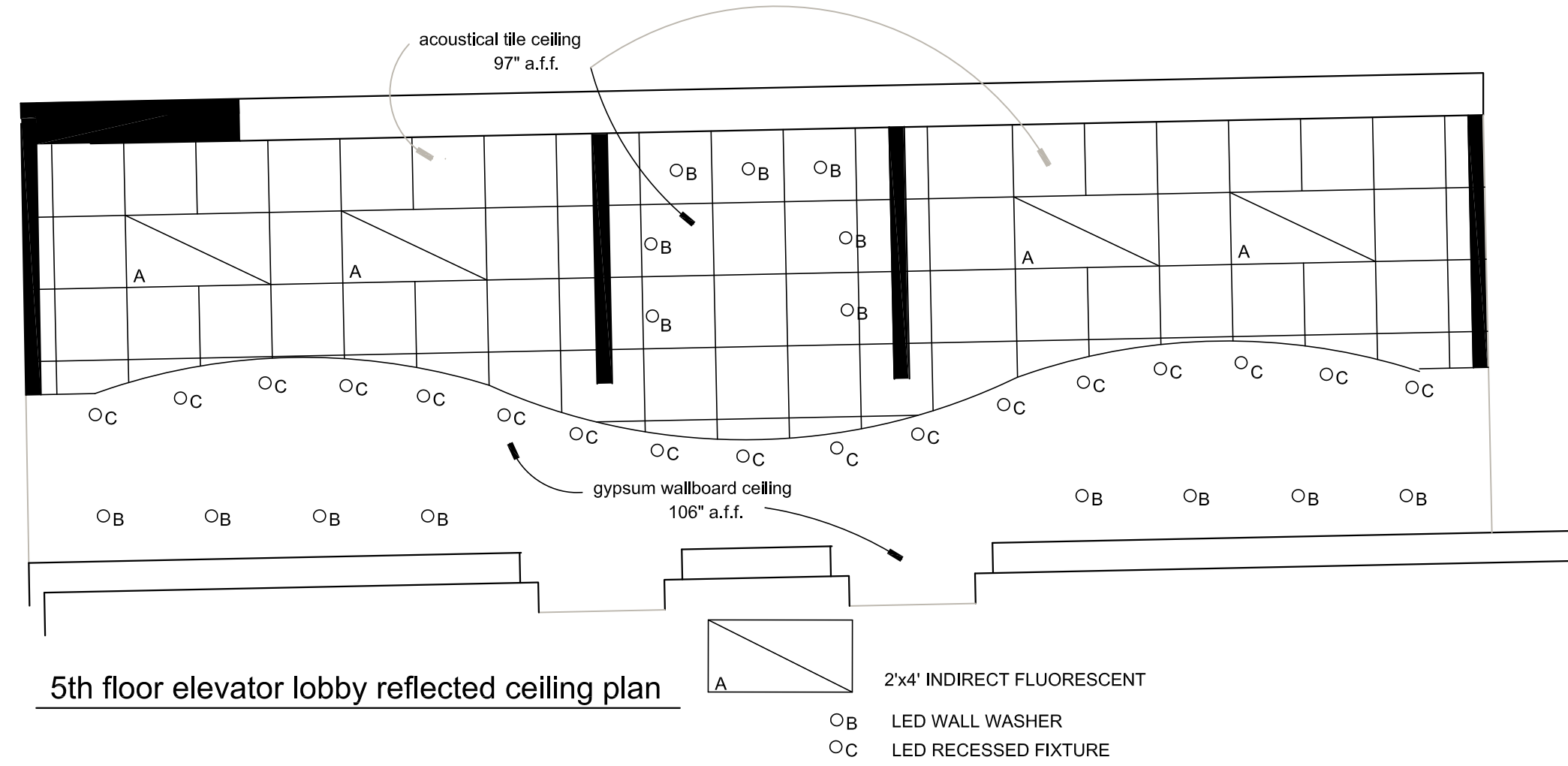
- ① trash
- ② mixed recy
- ③ cans/bottles
- ④ cardboard
- ⑤ microwave
- ⑥ toaster
- ⑦ coffee
- ⑧ dishwasher
- ⑨ refrigerator
- ⑩ sink
- ⑪ stepstool



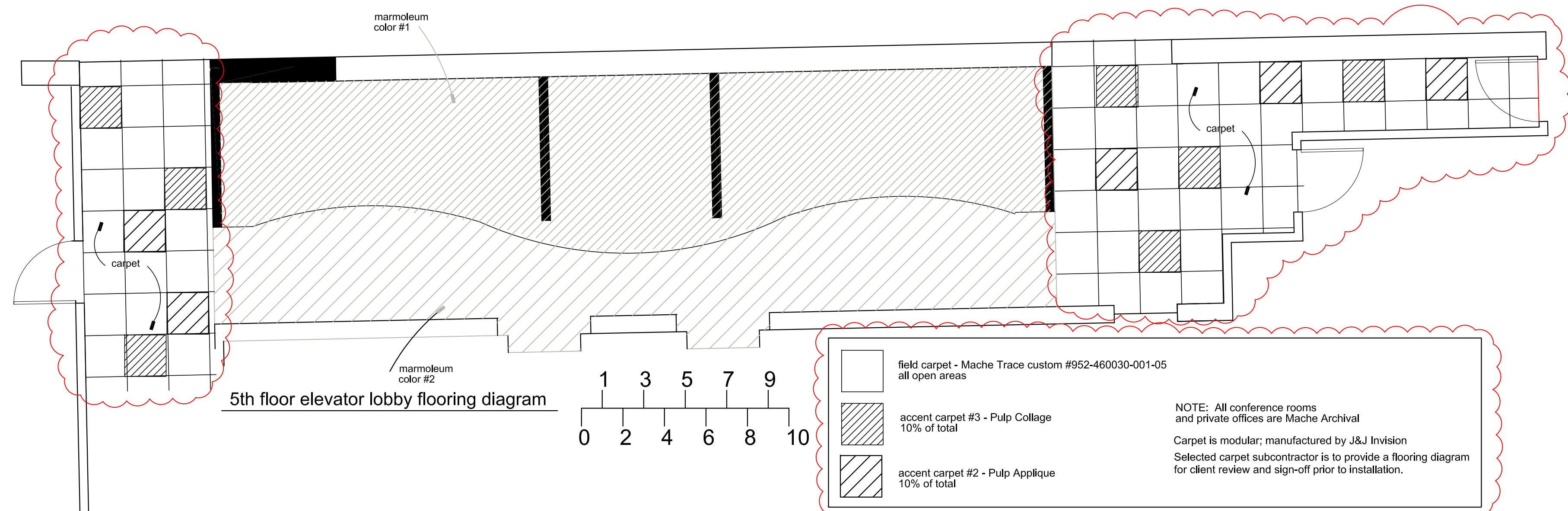
5th floor elevator lobby floor plan



5th floor elevator lobby furniture plan



5th floor elevator lobby reflected ceiling plan



5th floor elevator lobby flooring diagram

- field carpet - Mache Trace custom #952-460030-001-05 all open areas
- accent carpet #3 - Pulp Collage 10% of total
- accent carpet #2 - Pulp Applique 10% of total

NOTE: All conference rooms and private offices are Mache Archival
Carpet is modular; manufactured by J&J Invision
Selected carpet subcontractor is to provide a flooring diagram for client review and sign-off prior to installation.

Architect: **ARCHETYPE architects**
48 Union Wharf Portland, Maine 04101
(207) 772-6022 Fax (207) 772-4056

Project: **DIVERSIFIED COMMUNICATIONS**
PORTLAND, MAINE 04101

Revisions:

Date: 4 December 2012
Scale: 1/4" = 1'-0"

5TH FLOOR KITCHEN DRAWING