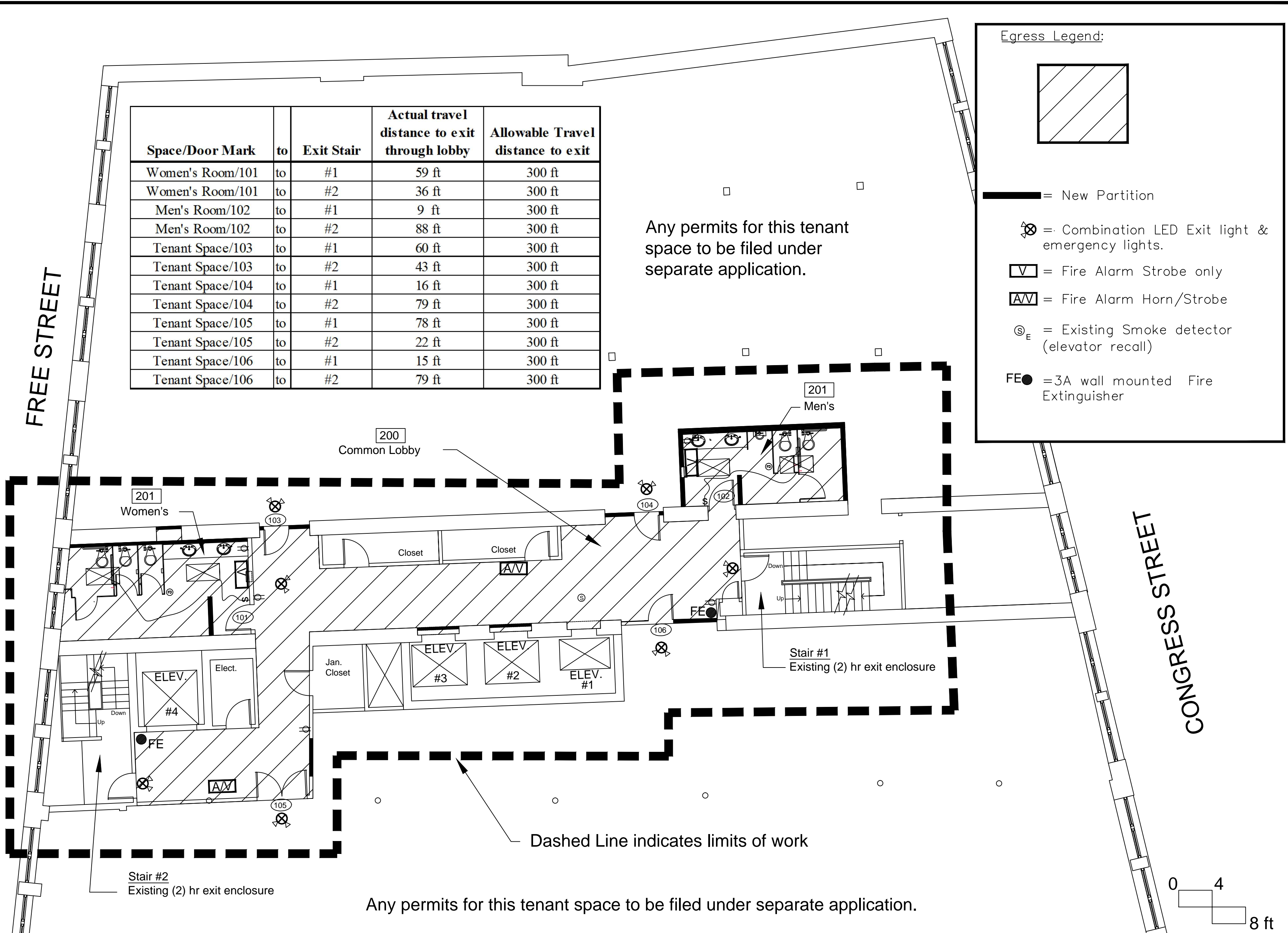


Space/Door Mark	to	Exit Stair	Actual travel distance to exit through lobby	Allowable Travel distance to exit
Women's Room/101	to	#1	59 ft	300 ft
Women's Room/101	to	#2	36 ft	300 ft
Men's Room/102	to	#1	9 ft	300 ft
Men's Room/102	to	#2	88 ft	300 ft
Tenant Space/103	to	#1	60 ft	300 ft
Tenant Space/103	to	#2	43 ft	300 ft
Tenant Space/104	to	#1	16 ft	300 ft
Tenant Space/104	to	#2	79 ft	300 ft
Tenant Space/105	to	#1	78 ft	300 ft
Tenant Space/105	to	#2	22 ft	300 ft
Tenant Space/106	to	#1	15 ft	300 ft
Tenant Space/106	to	#2	79 ft	300 ft

Any permits for this tenant space to be filed under separate application.

Egress Legend:

- = New Partition
- = Combination LED Exit light & emergency lights.
- = Fire Alarm Strobe only
- = Fire Alarm Horn/Strobe
- = Existing Smoke detector (elevator recall)
- = 3A wall mounted Fire Extinguisher



**562 Congress St.
Portland, Maine**

Egress Plan

Revisions:

EG-1
5/17/12
Sht 6 of 6