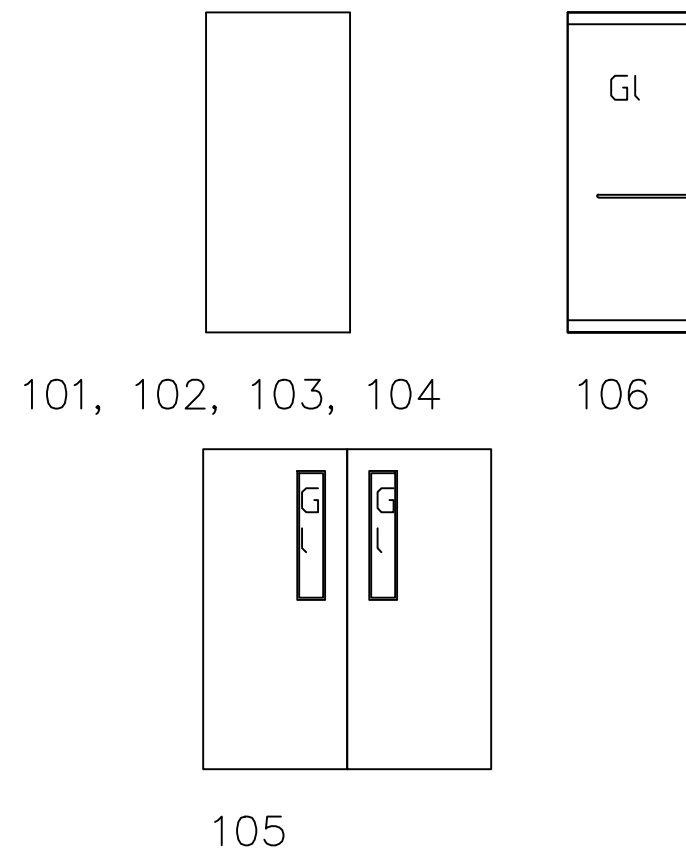
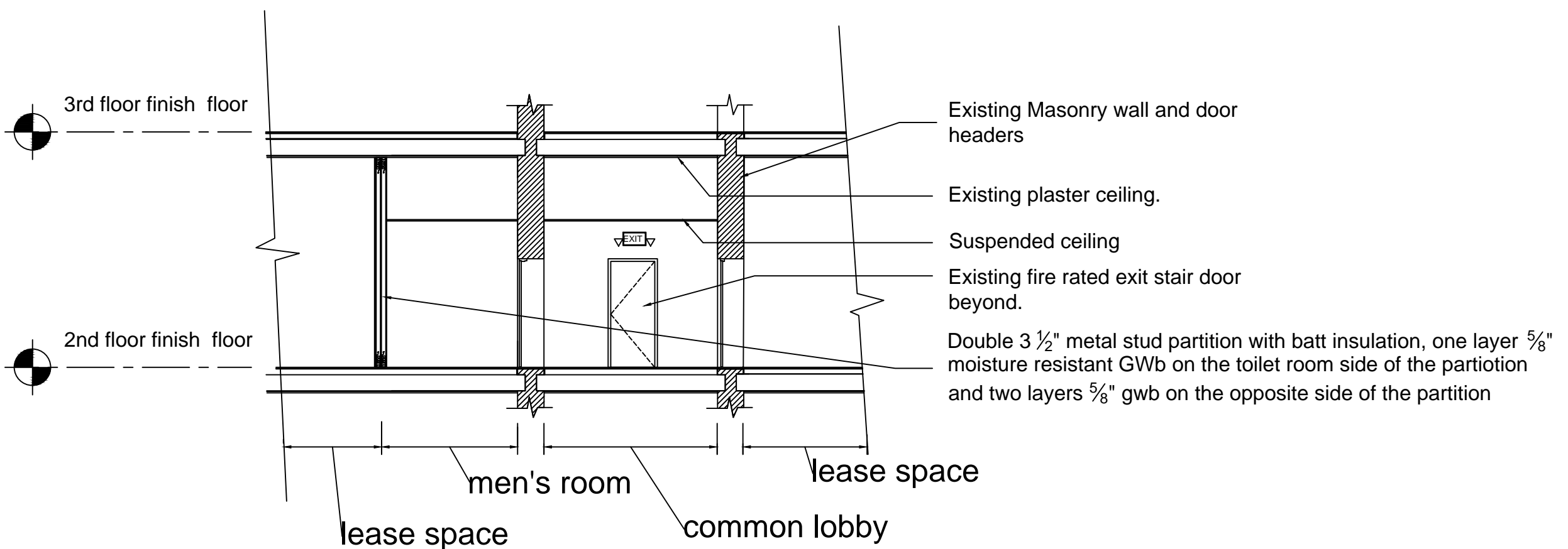
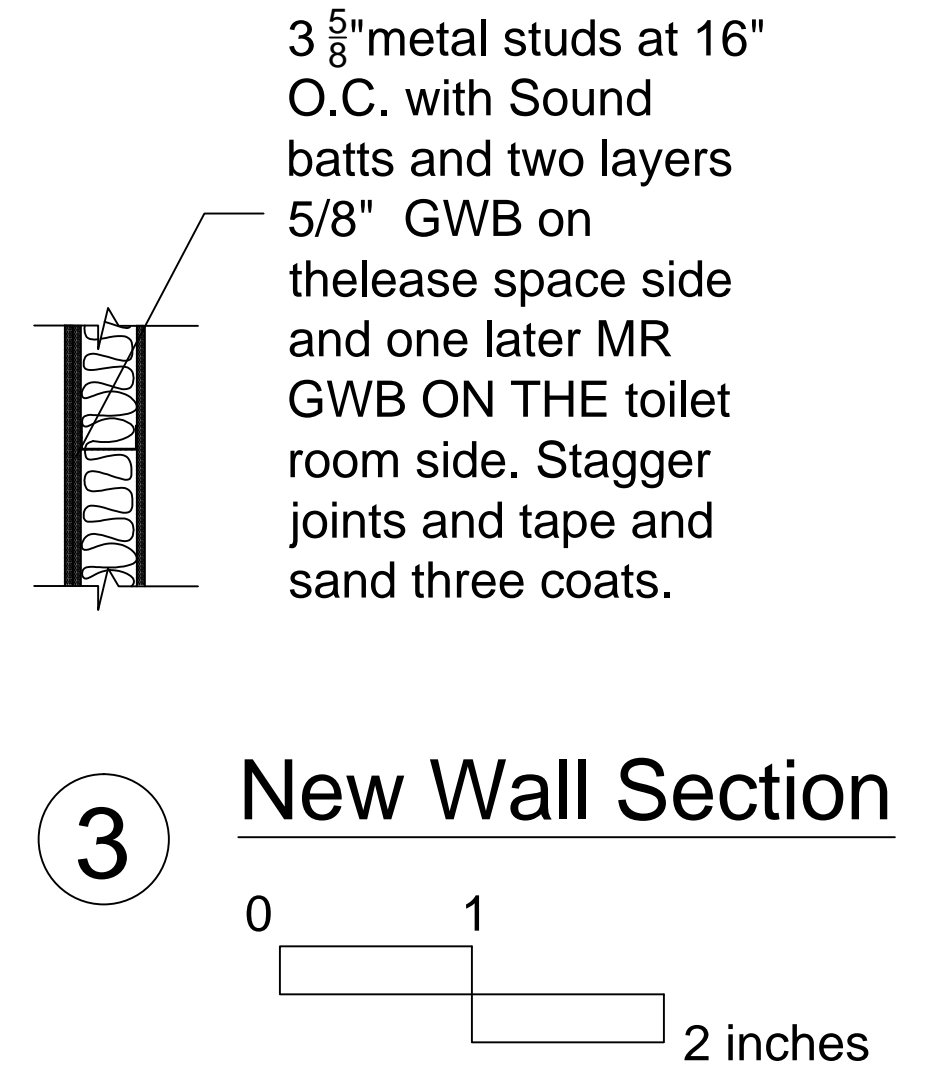


Mark	Size			type / material	frame	hardware	weather stripping	threshold	closer	comments
	width	height	thickness							
101 & 102	3'-0"	7'-0"	1 3/4"	SC wood (ptd)	metal	Storeroom function lever handles, 1 1/2 pair hinges, wall mounted door stop, 8x34 kick plate. US26 finish (typ).	none	none	yes	Keyway to be keyed to building system. Electric Strike to be wired to existing door control system.
103 & 104	3'-0"	7'-0"	1 3/4"	SC wood (ptd)	metal	Office function lever handles, 1/1/2 pair hinges, floor mounted dome door stop, US26 finish (typ).	none	none	no	Keyway to be keyed to building system.
105 (pair)	3'-0"	7'-0"	1 3/4"	SC wood (ptd) with tempered glass lite in metal frame.	metal	Office function lever handles on active door, electric fail-secure strike, latch protector, 1/1/2 pair hinges (including 1/2 pair electric hinge), wall mounted door stop, US26 finish (typ). Recessed bolts T & B inactive door.	none	none	no	Keyway to be keyed to building system. Electric Strike to be wired to existing door control system.
106	3'-0"	7'-0"	1"	Tempered glass with alum. top and bottom rails.	aluminum top and bottom rails.	Exterior: pull handle and keyway. Pivot hinges top and bottom. Deadbolt in bottom rail.	none	Alum.	yes	Keyway to be keyed to building system.

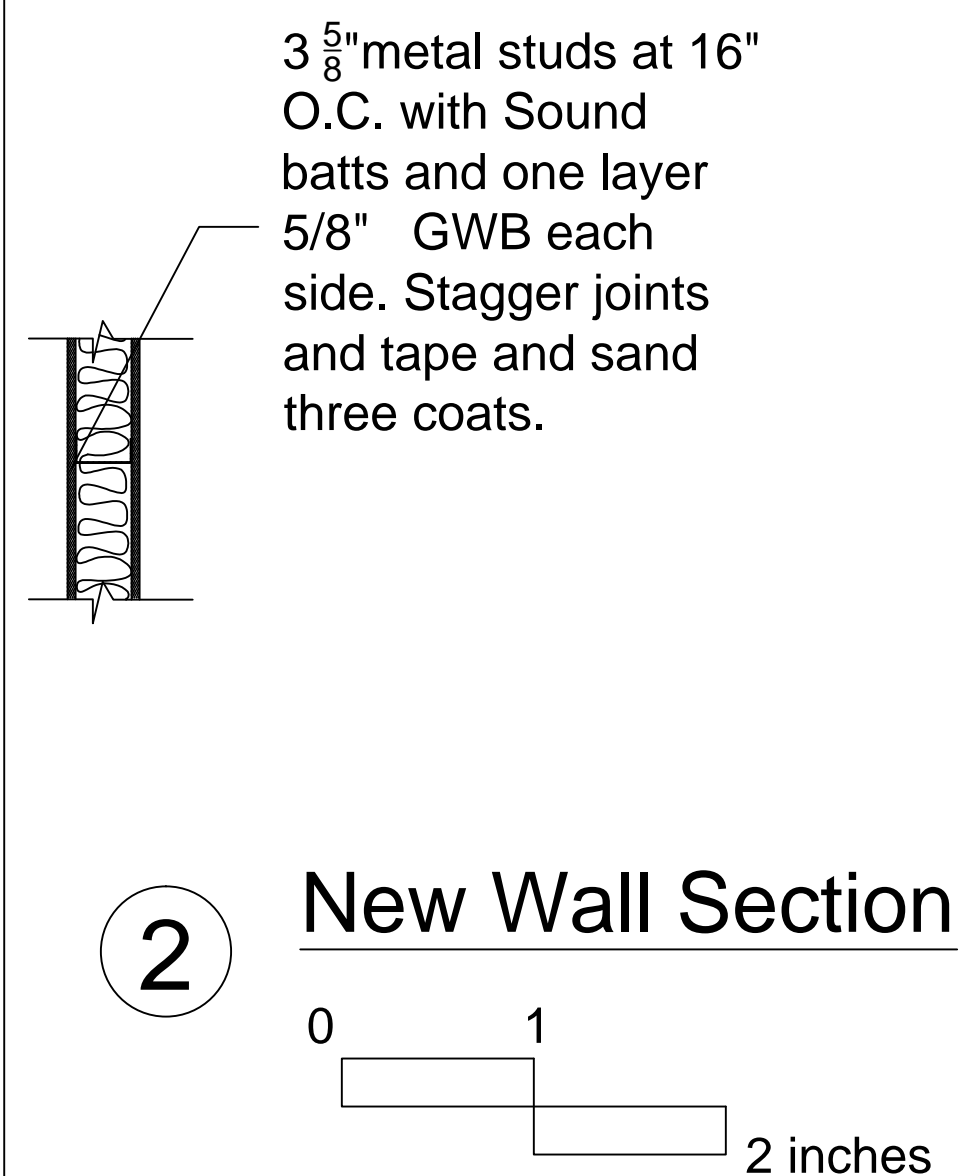


New Doors -nts

- Note:
- Existing doors to remain with existing hardware not "marked" on plan.
 - Refer plan for door swing.



1 Lobby Section



2 New Wall Section