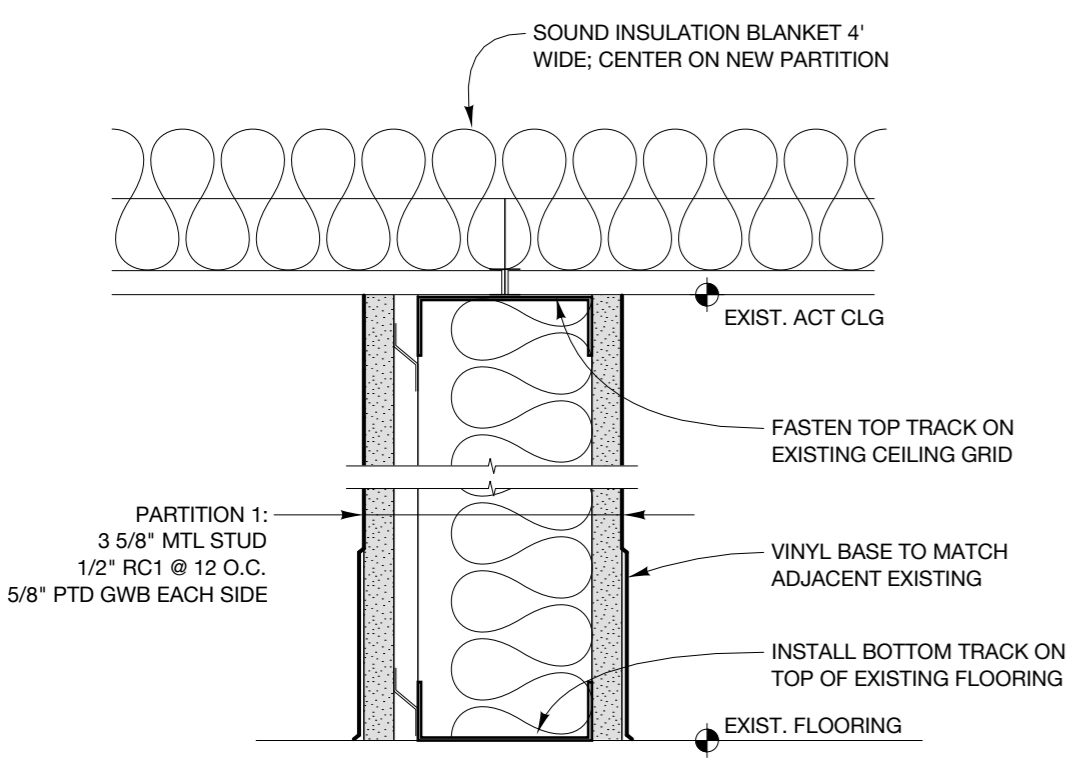
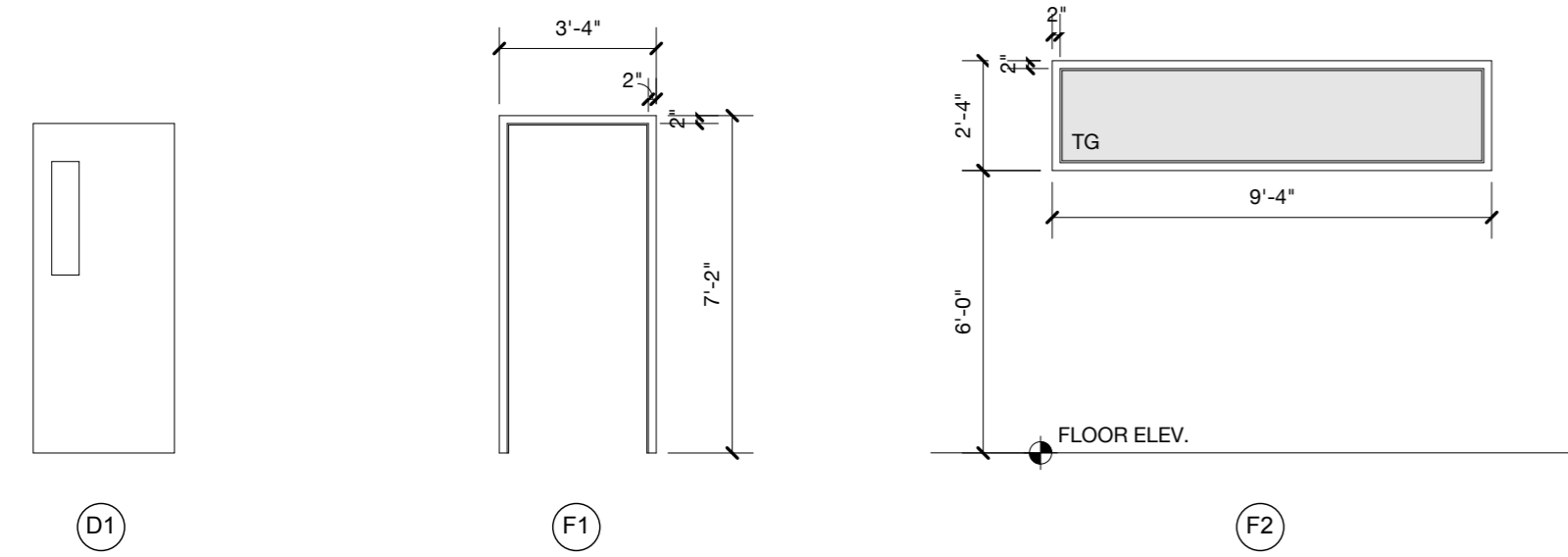


ELEVATION A

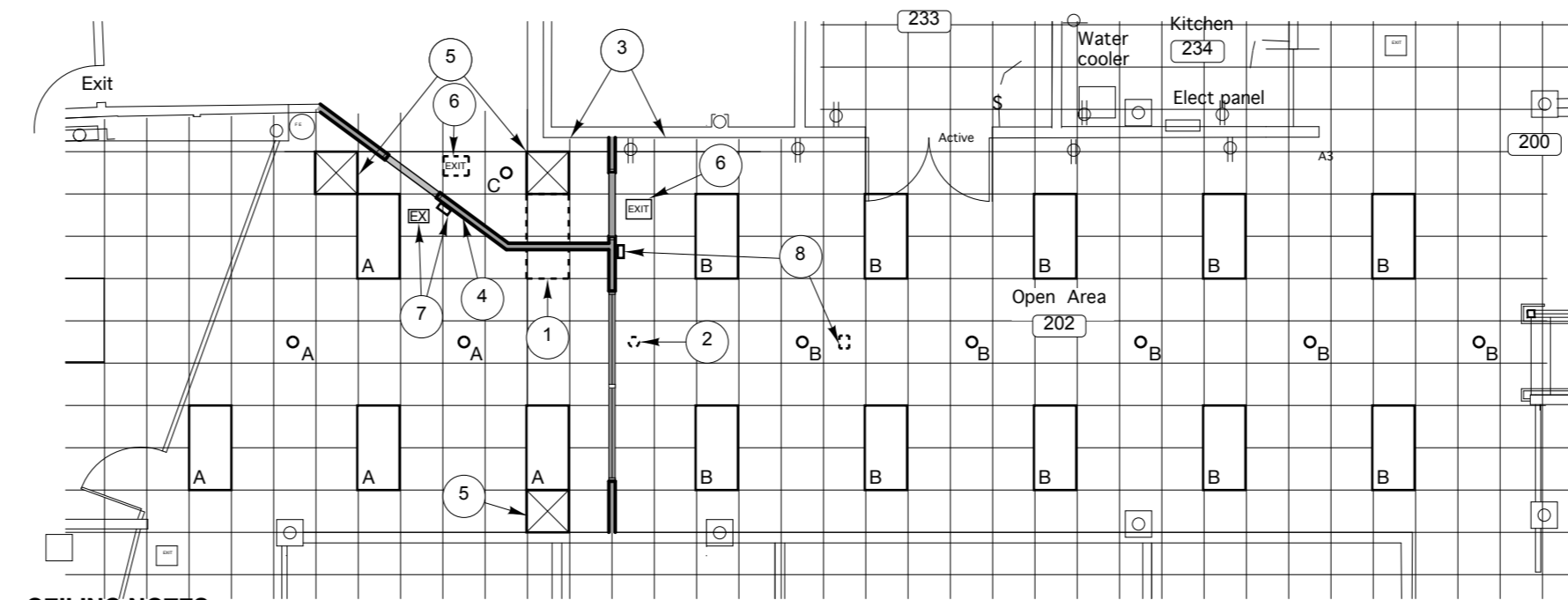
ELEVATION B

3 INTERIOR ELEVATIONS
SCALE: 1/4" = 1'-0"

DOOR & FRAME SCHEDULE								
DOOR NUMBER	OPENING SIZE	TYPE	MATERIAL / FINISH	FRAME TYPE	FRAME MATERIAL	HARDWARE	LABEL	NOTES
1	3'0"x7'0"	D1	EX	F1	PTD HM	HW1*	-	* use existing door RH leaf with existing usable hardware; new balance of HW as needed - see note on plan
2	3'0"x7'0"	D1	EX	F1	PTD HM	HW2**	-	** EXIT only door; locked from corridor side; use existing door LH leaf with existing usable hardware; new balance of HW as needed - see note on plan
3	EX	EX	EX	EX	EX	HW3***	-	*** relocate existing card reader from removed double door; install override locking switch to kill power to electric strike
-	9'0"x2'0"	-	-	F2	WD / CLR NATURAL	-	-	see elevation for location
HW1 HINGES CLOSER LOCKSET (OFFICE FUNCTION) WALL STOP use all existing, complete balance with new hardware								
HW2 HINGES CLOSER DEAD-LOCKING LATCH ON INSIDE BLANK ROSE OTHER SIDE WALL STOP use all existing, complete balance with new hardware								
HW3 EXISTING HW CLOSER ELECTRIC STRIKE W/ OVERRIDE LOCKING SWITCH CARD READER use all existing, complete balance with new hardware								



4 PARTITION 1 SECTION
SCALE: 3" = 1'-0"

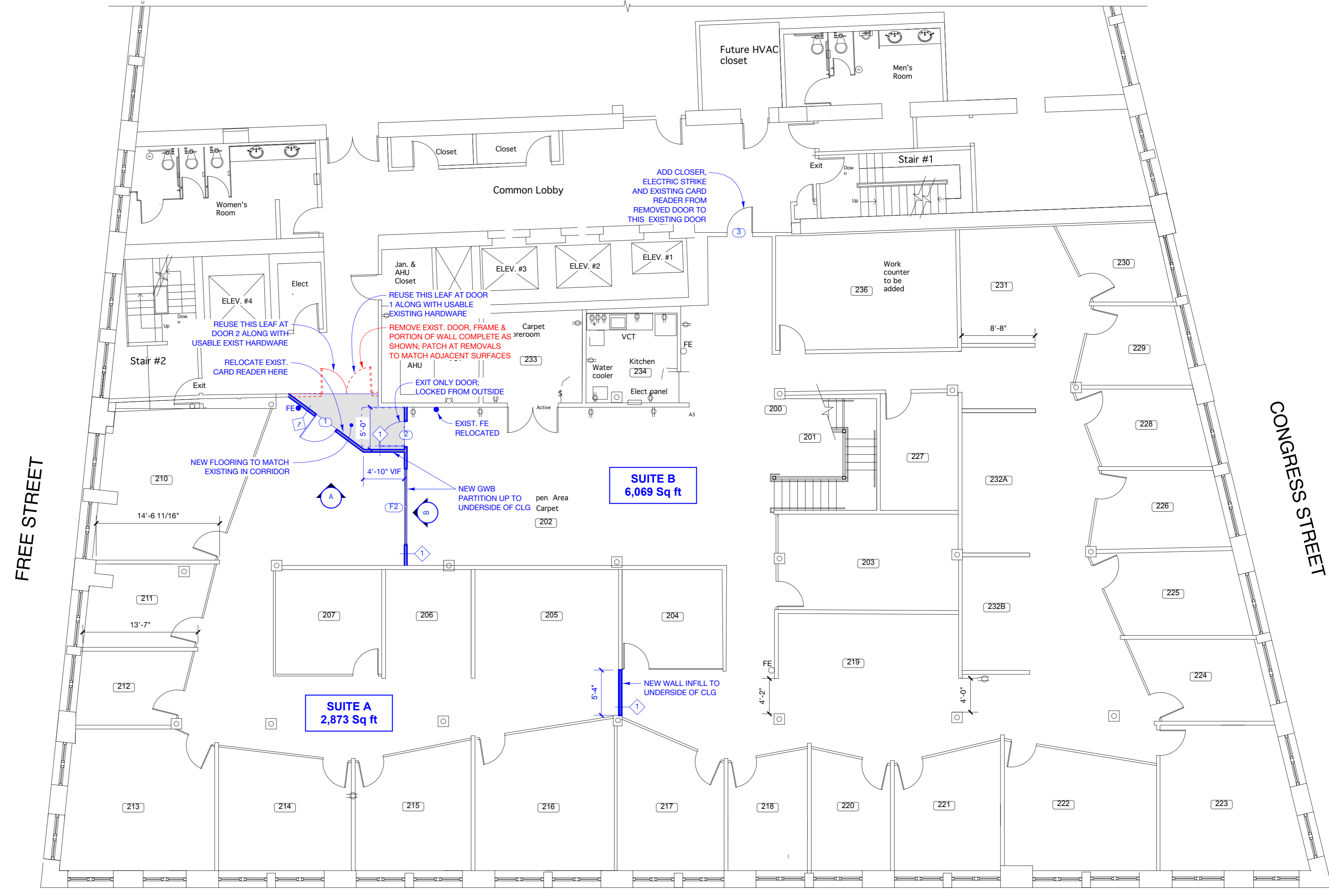


- CEILING NOTES**
- 1 - REMOVE LIGHT FIXTURE; REPLACE CEILING TILE TO MATCH
 - 2 - REMOVE LIGHT FIXTURE AND RELOCATE ON CORRIDOR ENTRY WHERE SHOWN, FIXTURE "C"
 - 3 - RELOCATE EXISTING SWITCHES AND CONTROLS ON SUITE B SIDE OF WALL TO CONTROL ALL EXISTING FIXTURES "B" IN OPEN AREA OF SUITE B
 - 4 - NEW SWITCHES / CONTROLS AS NEEDED TO CONTROL ALL EXISTING FIXTURES "A" IN LOBBY OF SUITE A
 - 5 - VERIFY IN FIELD WITH OWNER DUCTWORK AND CONTROLS FOR VENT GRILLS; MODIFY CONTROLS AS NEEDED TO SEPARATE GRILLS IN SEPARATE TENANTS SPACE
 - 6 - RELOCATE EXISTING "EXIT" SIGN FIXTURE AT DOOR #2 / SUITE B
 - 7 - INSTALL NEW "EXIT" SIGN AND RELOCATE EXISTING HORN/STROBE FIXTURE AT DOOR #1 / SUITE A
 - 8 - RELOCATE EXISTING HORN/STROBE AT DOOR #2
 - 9 - FOR ALL FIRE ALARM APPLIANCES SEE LIFE SAFETY PLAN ON A0.0 AND COORDINATE ON SITE WITH EXISTING CONDITIONS FOR ANY EXISTING APPLIANCES TO BE REUSED AND/OR RELOCATED

2 PARTIAL CEILING PLAN
SCALE: 1/8" = 1'-0"



5 KEY PLAN
second floor scope of work
SCALE: NTS



- EXISTING CONDITIONS
- - - DEMOLITION WORK
- NEW CONSTRUCTION WORK

NOTE TO GC: FOR ALL MATERIALS CALLED TO MATCH "ADJACENT EXISTING" CHECK WITH OWNER TO CONFIRM EXISTING MATERIAL STOCK PRIOR TO PURCHASING

1 PROPOSED PLAN
SCALE: 1/8" = 1'-0"



Winton Scott Architects
5 Milk Street
Portland, Maine 04101
207 774 4811
www.wintonsscott.com

Architecture / Planning
Preservation Architecture
Interior Architecture



PERMIT DRAWINGS
10/22/17

Client
Spinnaker Trust

Office Interior
Alterations

562 CONGRESS
Portland, Maine

PROPOSED
FLOOR PLAN &
DETAILS

scale: as shown

A 1.0

October 22, 2017