

**AZIMUTH LLC**  
**josef chalut**  
 architect  
 327 ocean house road  
 Cape Elizabeth, Maine  
 Maine Licensed Architect  
 office 207 799 0404  
 cell 207 318 3234  
 e: azimuth@maine.rr.com

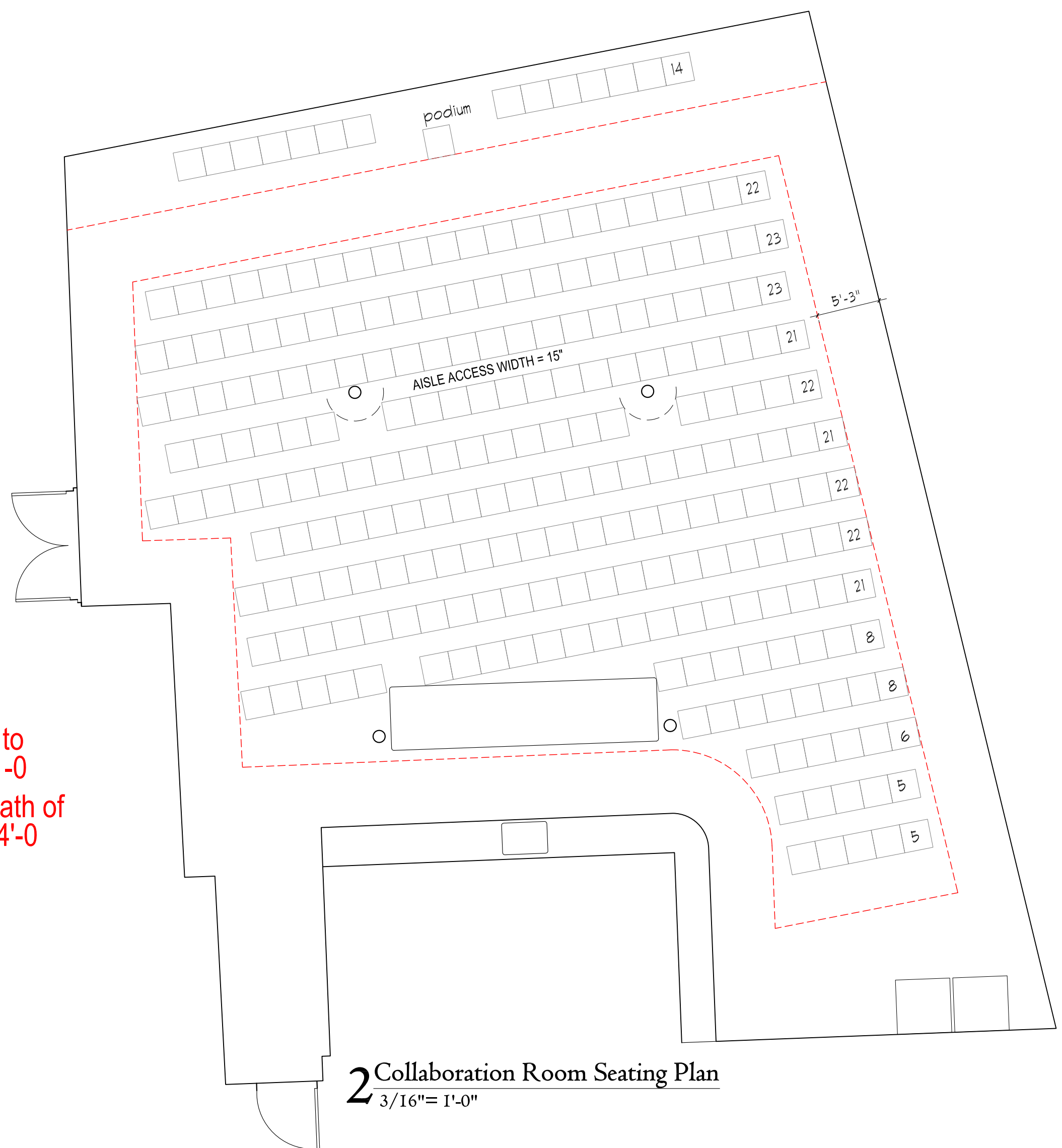
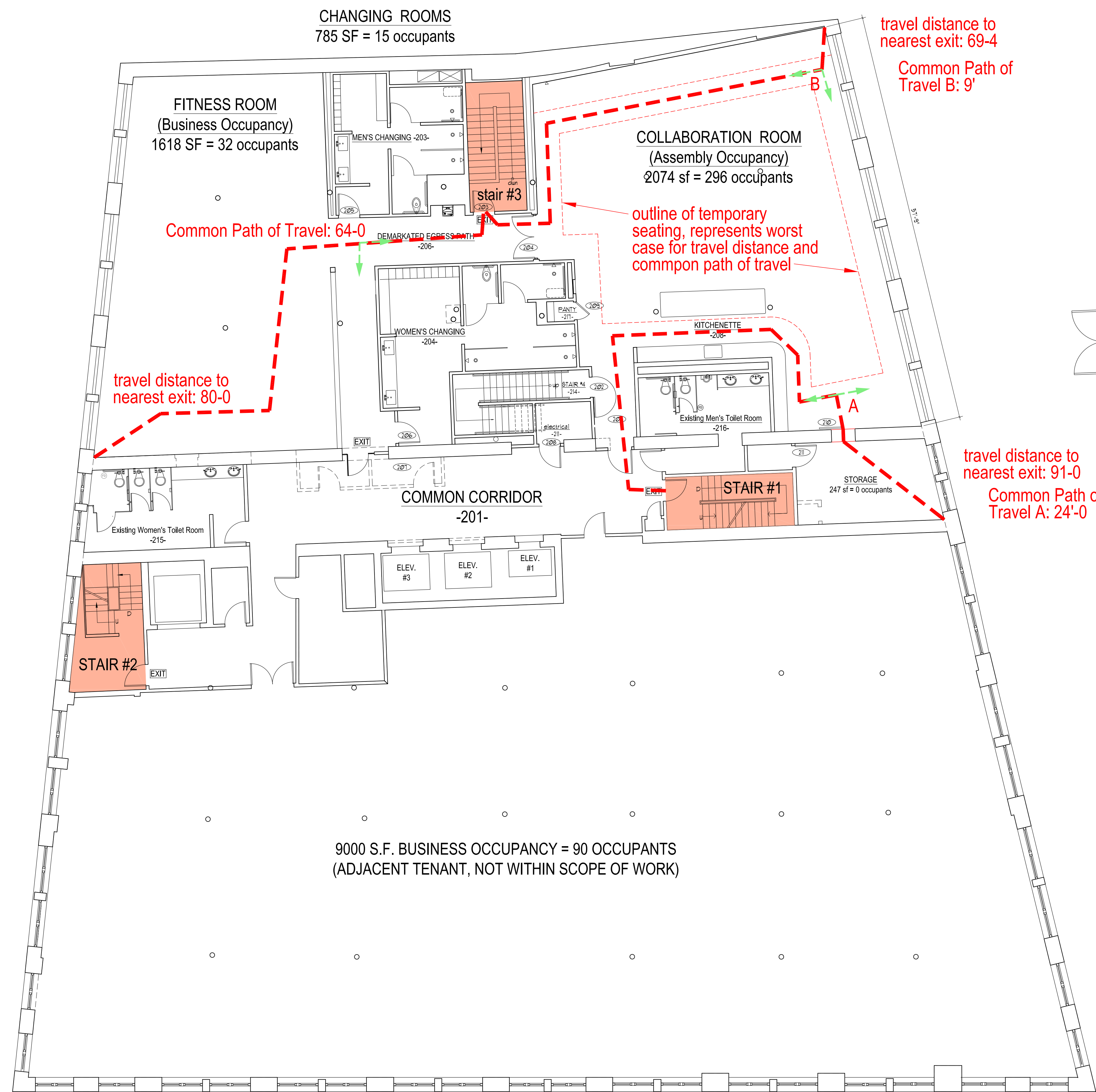


- List of Drawings
- A0.00 Unissued Plans
  - A1.01 First Floor Plan (north)
  - A1.02 First Floor Plan (south)
  - A1.03 Second Floor Plan
  - A1.04 3d Floor Plan
  - A1.05 1st Flr Reflected Ceiling Plan
  - A1.06 2nd Flr Reflected Ceiling Plan
  - A2.01 Interior Elevations
  - A2.02 Interior Elevations
  - A3.01 Stair #3, HVAC chase
  - A3.02 Stair #4
  - A4.01 Changing Rooms (Lockers)
  - A5.01 Wall Types
  - A6.01 Schedules
  - LS1.1 1st Floor Life Safety
  - LS1.2 2nd Floor Life Safety
- As Built Revision to Occupant Load  
 Date of these drawings: May 20, 2014

Diversified Communications  
 Proposed Tenant Improvements  
 121 Free Street,  
 Portland Maine, 04101

2nd Floor Life Safety Plan  
 Collaboration Room  
 Seating Diagram

LS1.2



CHANGING ROOMS  
785 SF = 15 occupants

FITNESS ROOM  
(Business Occupancy)  
1618 SF = 32 occupants

COLLABORATION ROOM  
(Assembly Occupancy)  
2074 sf = 296 occupants

COMMON CORRIDOR  
-201-

9000 S.F. BUSINESS OCCUPANCY = 90 OCCUPANTS  
(ADJACENT TENANT, NOT WITHIN SCOPE OF WORK)

travel distance to nearest exit: 69-4  
 Common Path of Travel B: 9'

Common Path of Travel: 64-0

travel distance to nearest exit: 80-0

outline of temporary seating, represents worst case for travel distance and common path of travel

travel distance to nearest exit: 91-0  
 Common Path of Travel A: 24'-0"

2 Collaboration Room Seating Plan  
 3/16" = 1'-0"

**Relevant Codes**

**Travel Distance to Exits**

Business Occupancy  
 NFPA 39.2.6.3: Travel distance shall not exceed 300 ft (with sprinkler)  
 IBC Table 1016.1 with sprinkler system: 300 ft maximum

Assembly Occupancy  
 NFPA 13.2.6.2, exception (1): Travel distance shall not exceed 250' (with sprinkler)  
 IBC Table 1016.1 with sprinkler system: 250 ft maximum

**Common Path of Travel**

Business Occupancy  
 NFPA 39.2.5.3.1: Common Path of Travel shall not exceed 100 ft in a sprinklered  
 IBC 1014.3, exception 1, for sprinklered 100 ft maximum

Assembly Occupancy  
 NFPA 13.2.5.1.2 (also table A7.6): Common Path of travel shall not exceed 20 feet where space serves more than 50 occupants, and shall not exceed 75 feet where space serves less than 50 occupants  
 per MUBEC 16-635 Chapter 3 Item 24. Common Path of travel shall be in accordance with NFPA Table A7.6

**Seating Requirements**

Chair Dimensions: 19x19  
 Aisle Access Width = 15"  
 Aisle Width = 63"  
 Capacity of Aisle = 63/22 = 286

Audience: 229  
 Speaker Seating: 14  
 total seated 243

NFPA 13.2.5.5.4.1 Minimum clear width of aisle accessway shall be 12" for first 14 seats plus .3" per seat over up to 22" wide. (= 15" for 24 seats)  
 NFPA 13.2.5.5.4 Rows of seating served by aisles or doorways at both ends shall not exceed 100 seats per row.  
 IBC 1028.10.1 Dual access. For rows of seating served by aisles or doorways at both ends, there shall not be more than 100 seats per row.

**Maximum Occupant Load of entire Floor determined by stair capacity**

Stair #1: 45"  
 Stair #2: 41"  
 Stair #3: 45"

Capacity of 2 stairs to provide 1/2 the occupant load  
 41+45=86" = 1/2 capacity = 286 more than half of 436

Occupant Loads:  
 Spinnaker: 90 (1 per 100 sf)  
 Fitness: 32 (1 per 50 sf)  
 Changing: 15 (1 per 50 sf)  
 Collaboration: 296 (1 per 7 sf)

Collaboration room shall be posted in accordance with NFPA 12.7.9.3

OCCUPANCY BY MORE THAN 296 PERSONS IS DANGEROUS AND UNLAWFUL



Second Floor LS Plan  
 1/8" = 1'-0"

