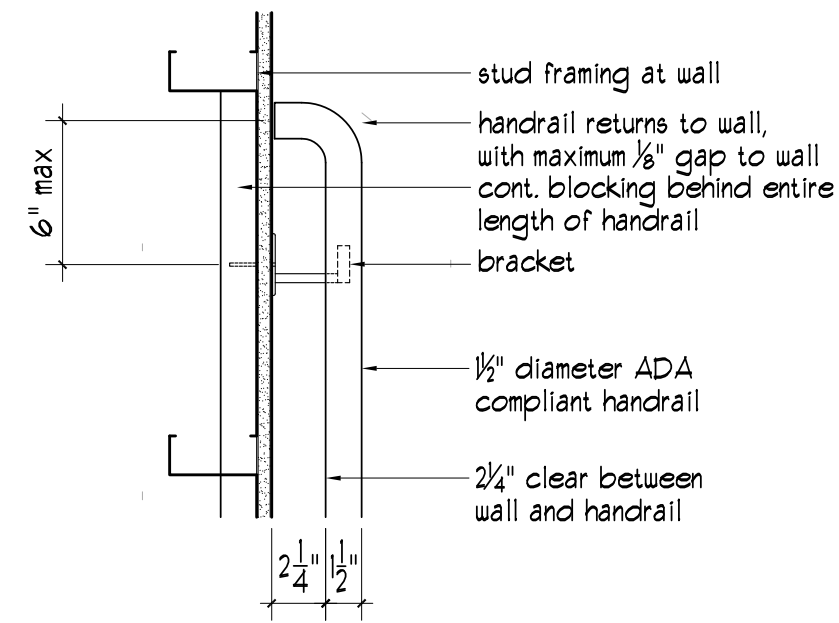
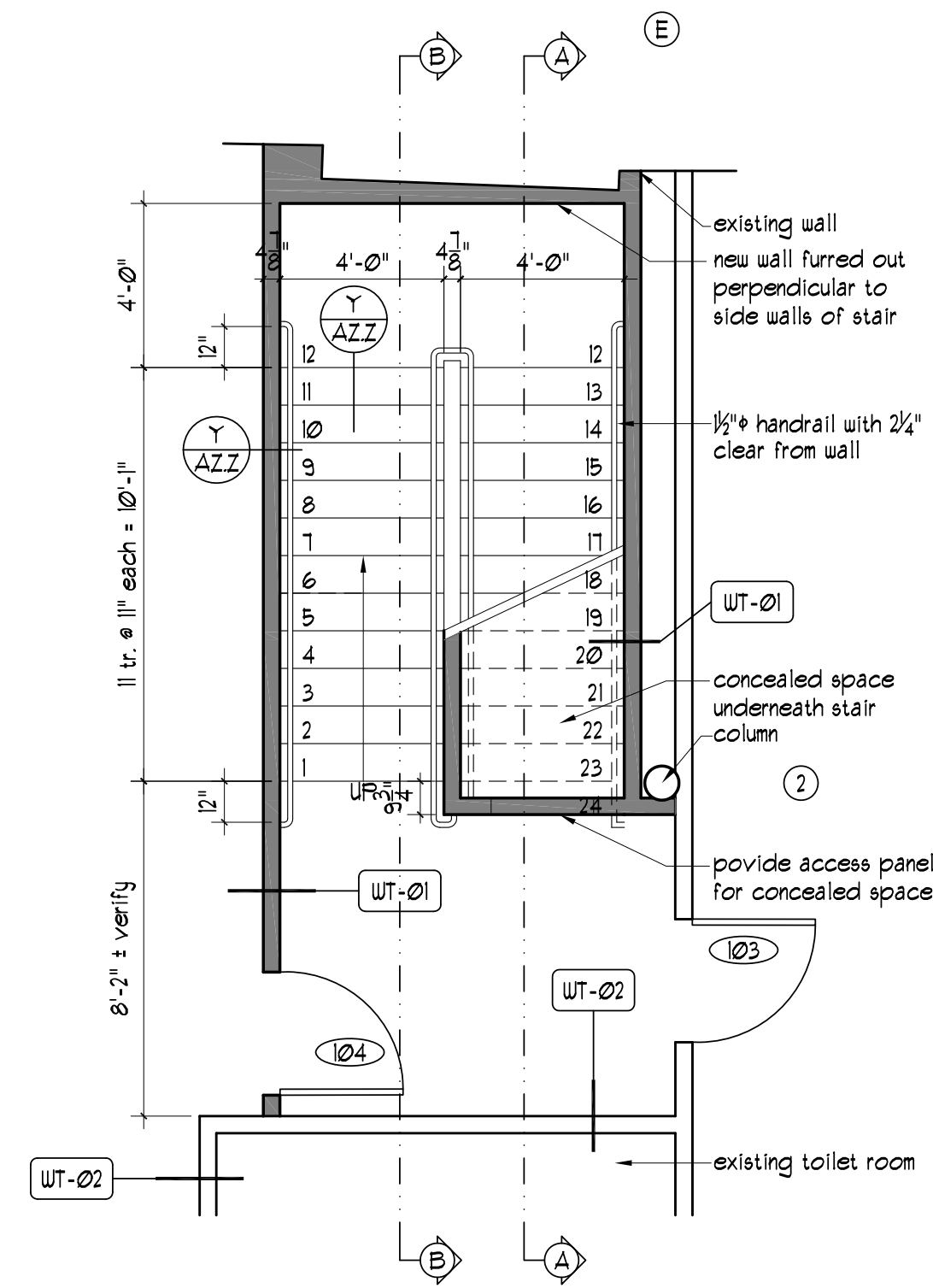


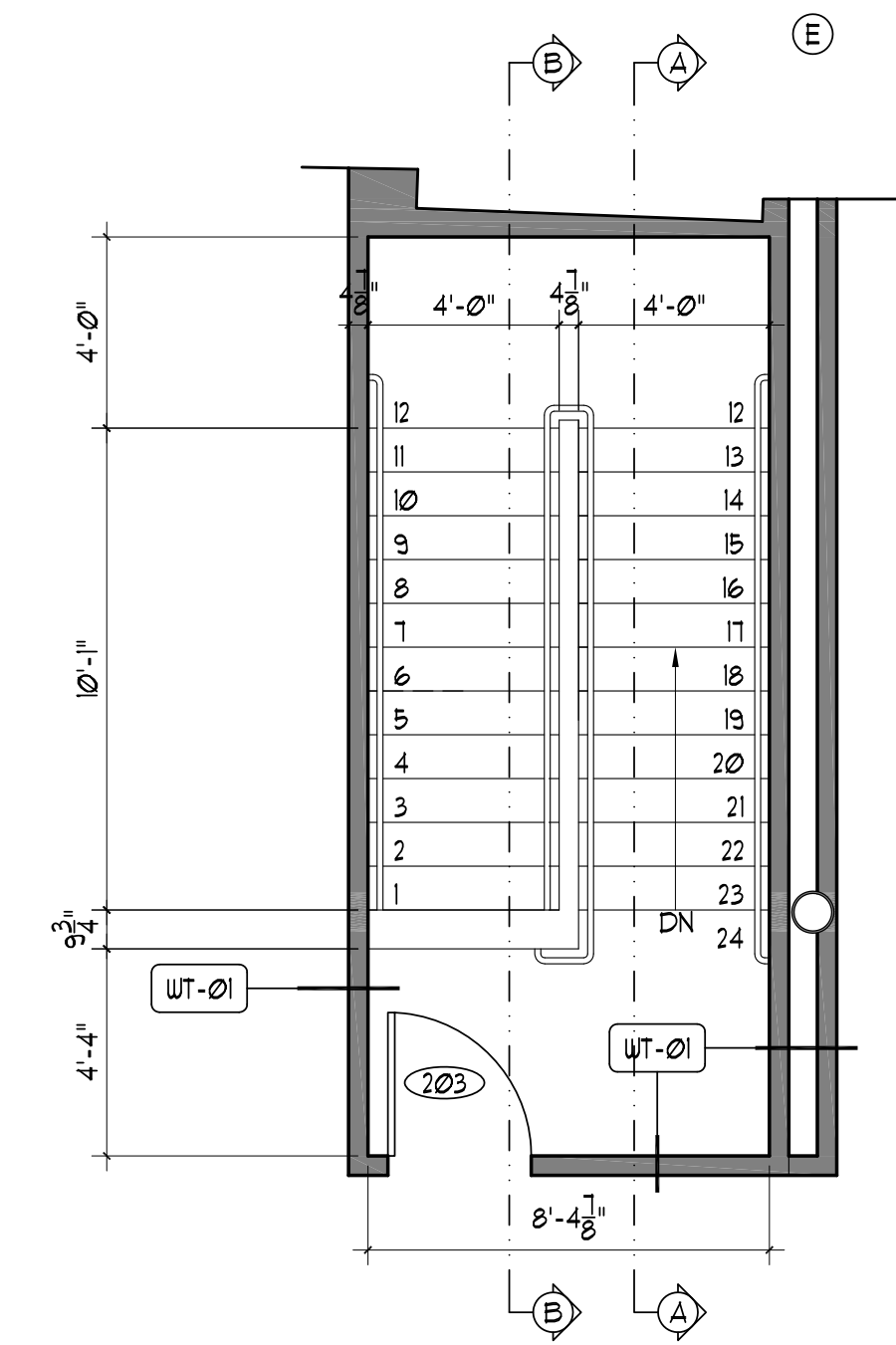
8 Stair geometry
1/2" = 1'-0"



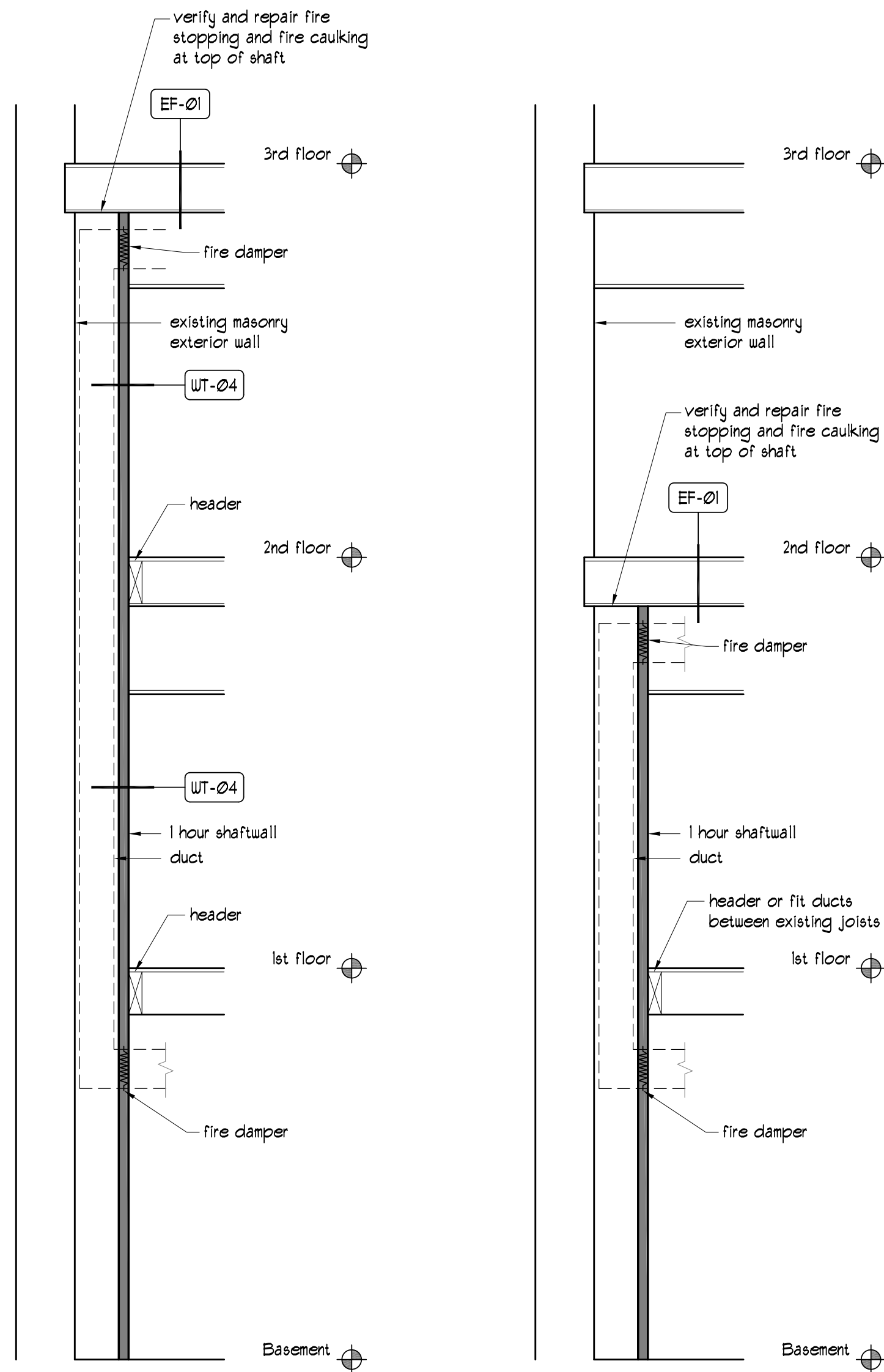
7 Handrail at stairs, plan view
1/2" = 1'-0"



4 Stair plan at 2nd floor
1/4" = 1'-0"

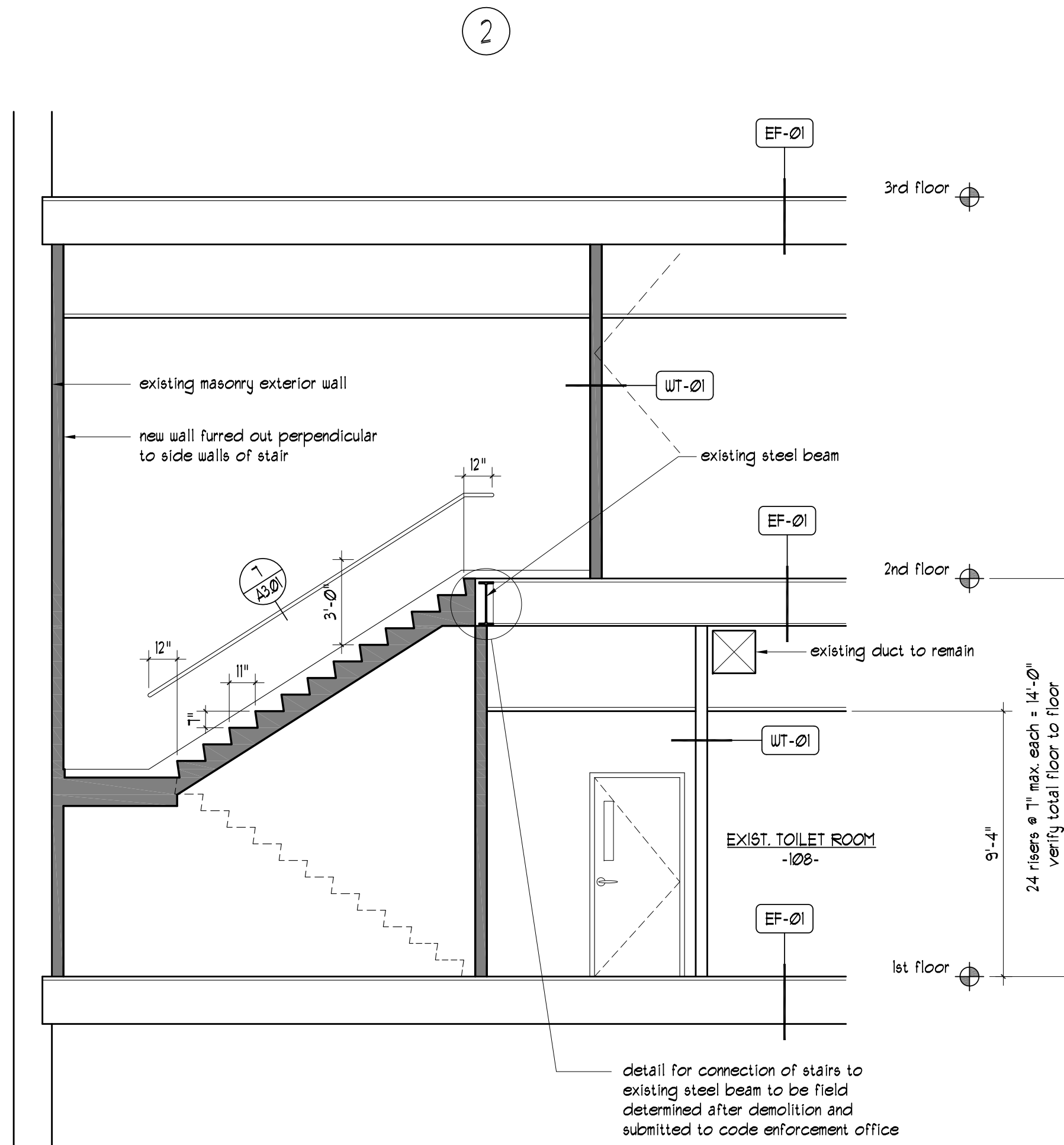


3 Stair plan at 2nd floor
1/4" = 1'-0"

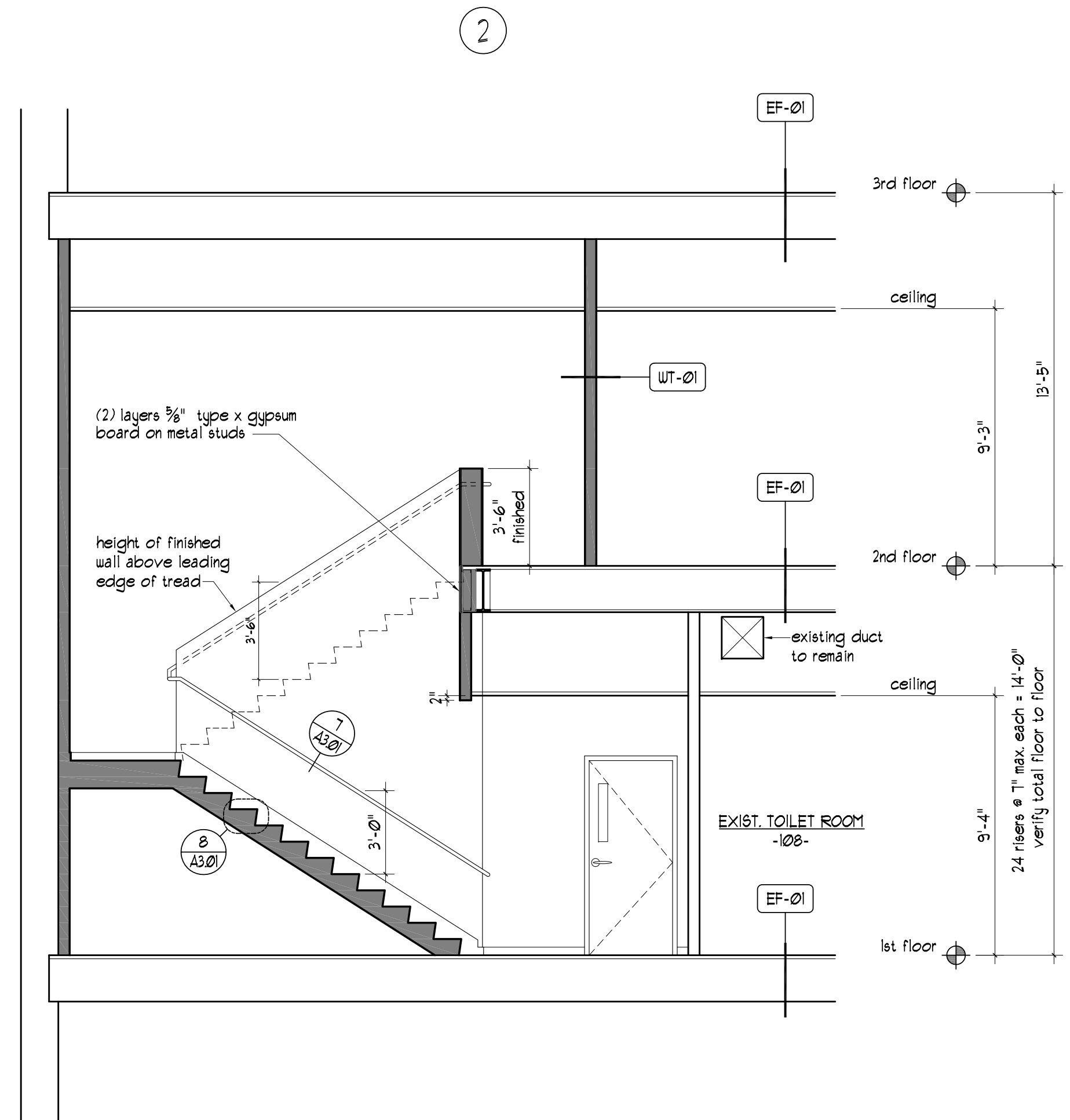


6 Duct Chase 2
1/4" = 1'-0"

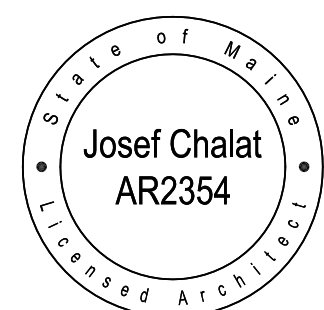
5 Duct Chase I
1/4" = 1'-0"



2 Stair Section B
1/4" = 1'-0"



I Stair Section A
1/4" = 1'-0"



AZIMUTH LLC
josef chalot
architect
327 ocean house road
Cape Elizabeth, Maine
Maine Licensed Architect
office 207 799 0404
cell 207 318 3234
e: azimuth@maine.rr.com



List of Drawings
A0.01 Life Safety Plans
A1.01 First Floor Plan (north)
A1.02 First Floor Plan (south)
A1.03 Second Floor Plan
A1.04 3d Floor Plan
A1.05 1st Flr Reflected Ceiling Plan
A1.06 2nd Flr Reflected Ceiling Plan
A2.01 Interior Elevations
A2.02 Interior Elevations
A3.01 Stair #3, HVAC chase
A3.02 Stair #4
A4.01 Changing Rooms (Lockers)
A5.01 Wall Types
A6.01 Schedules
Purpose of these drawings:
permit and construction
Date of these drawings:
November 22, 2013

Diversified Communications
Proposed Tenant Improvements
121 Free Street,
Portland Maine, 04101

Stair #3
Duct Chases

A3.01