

Day St side

Congress St side

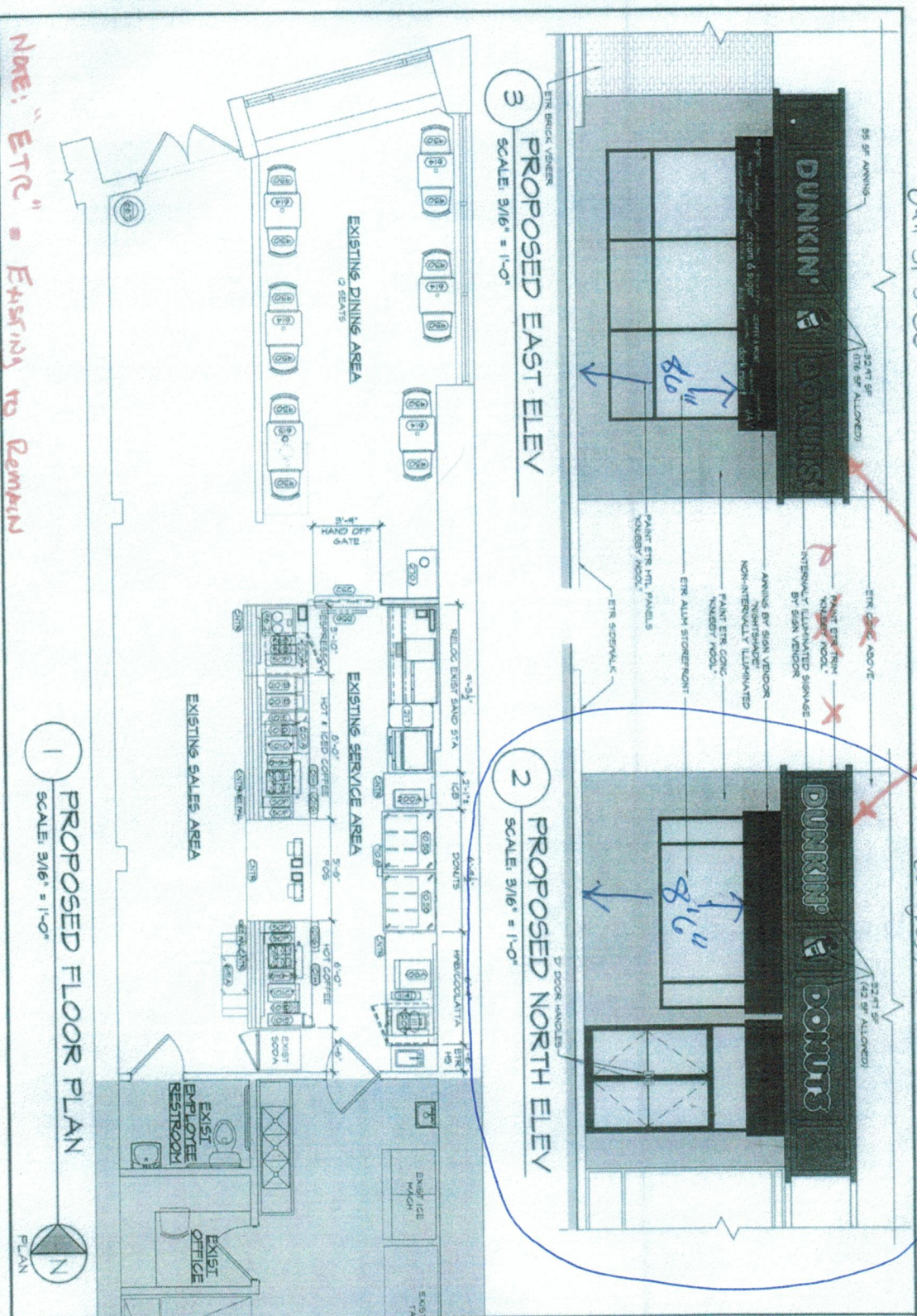
3 PROPOSED EAST ELEV SCALE: 3/16" = 1'-0"

2 PROPOSED NORTH ELEV SCALE: 3/16" = 1'-0"

NAME: "ETRC" = EXISTING TO REMAIN

OKAY AS NOTED 1/22/13 BK

EXISTING SIGNBOARD TO BE PAINTED GREEN BY LANDLORD



<p>AHARONIAN & ASSOCIATES INC. ARCHITECTS</p> <p>310 George Washington Highway Suite 100 Smithfield, Rhode Island 0 2 1 1 7 7 481-822-5415 7 481-822-5888 WWW.AA2-ENG.COM</p>	<p>DUNKIN' DONUTS [seal/inkwater] Pc# 338175</p>	<p>554 CONGRESS STREET PORTLAND, ME Cumberland County</p>	<p>PROPOSED FLR PLAN & ELEVS</p> <p>DATE: JAN 08, 2013 DRAWN BY: JED CHECKED BY: JA</p>	<p>PROJECT TITLE: PROPOSED FLR PLAN & ELEVS</p> <p>DATE: 1/25/13</p>
--	---	---	--	--



1 PROPOSED FLOOR PLAN SCALE: 3/16" = 1'-0"

A1.1