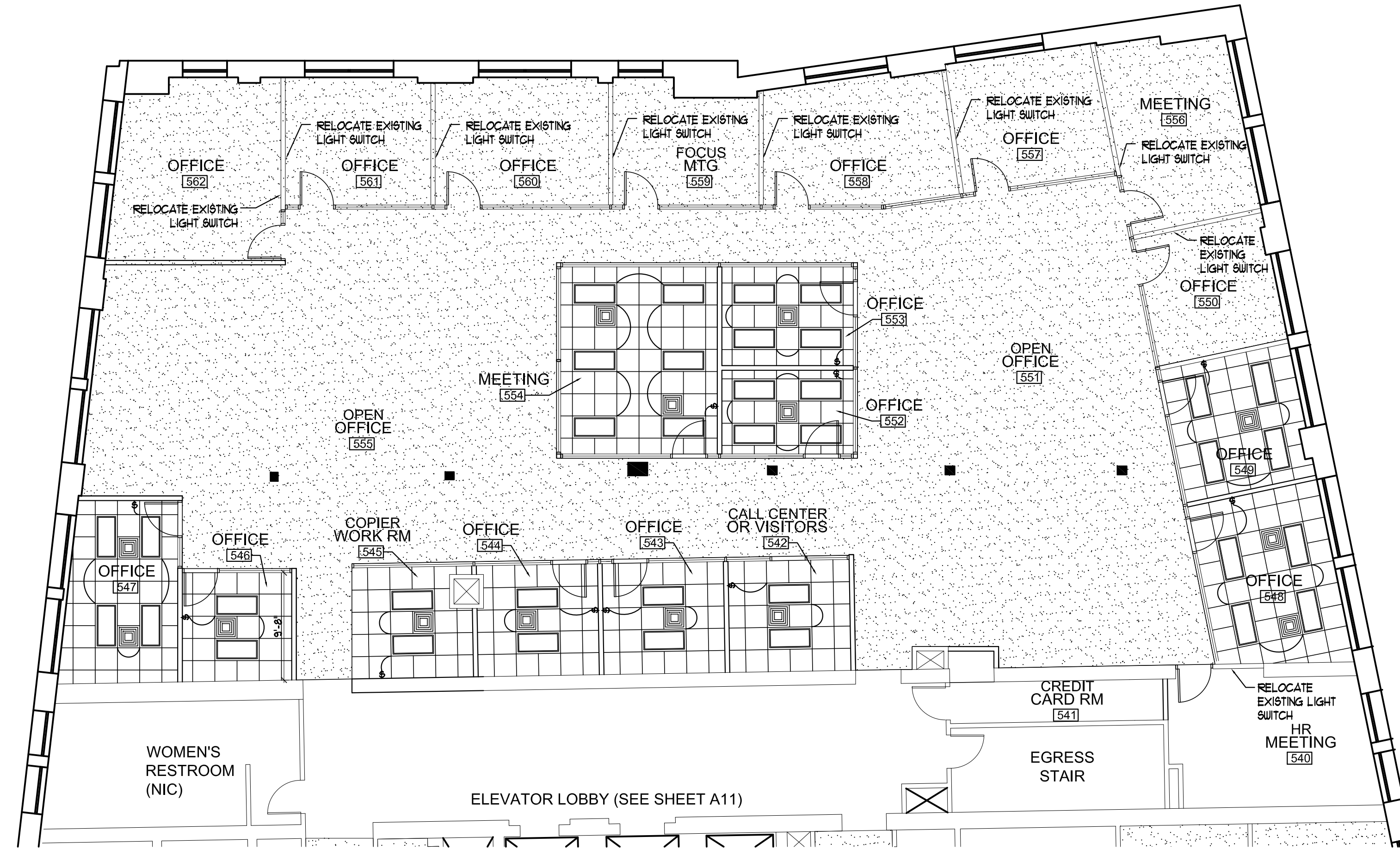
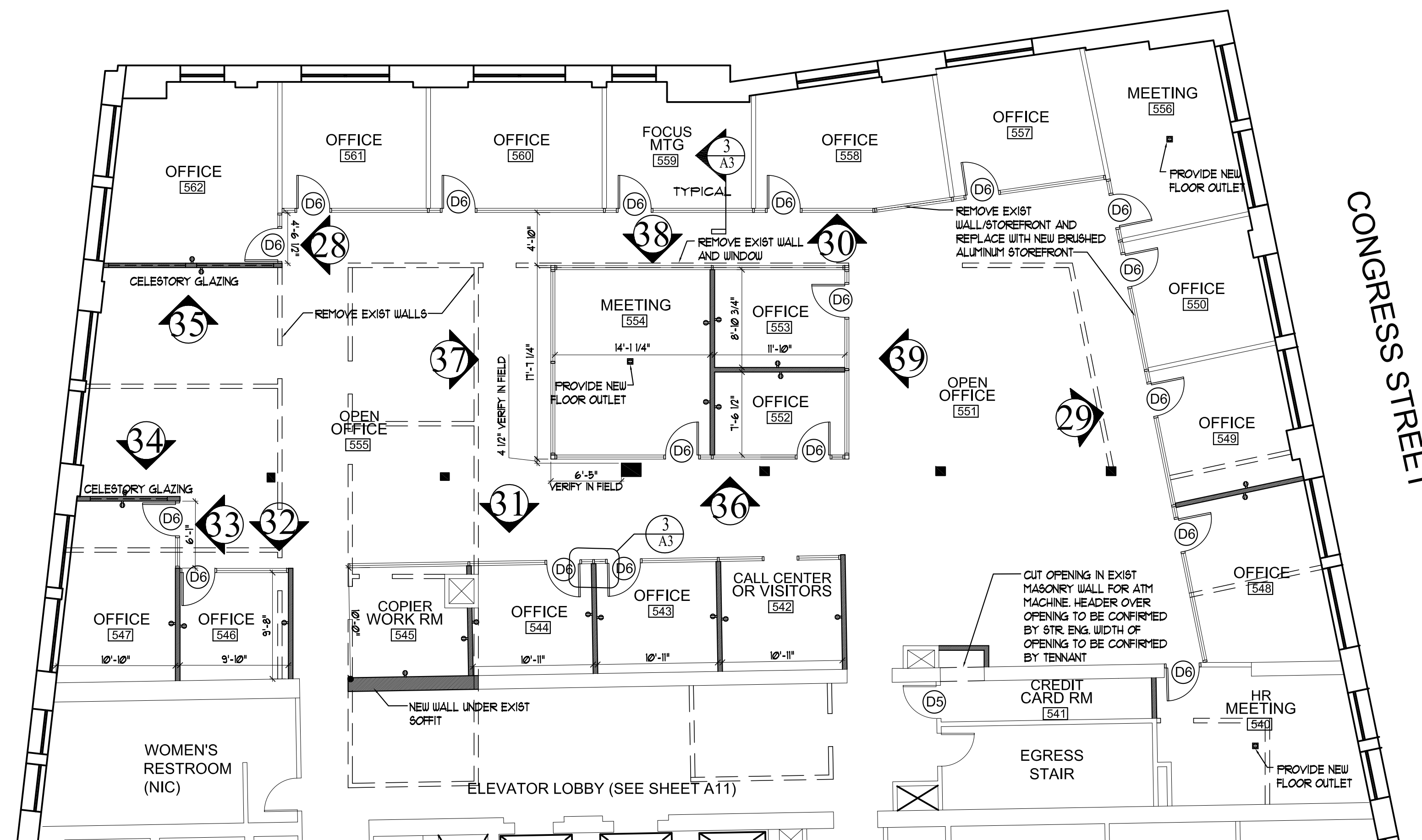


KEY PLAN
N.T.S.

| RCP LEGEND | |
|------------|--|
| | NEW 24x24 ACT TILES IN NEW GRID SYSTEM |
| | NEW 24x24 ACT TILES AND NEW CEILING LIGHT FIXTURES IN EXISTING GRID SYSTEM |
| | NEW 24x48 CEILING LIGHT FIXTURE |
| | NEW DIFFUSER |
| | NEW SINGLE SWITCH |



2 REFLECTED CEILING PLAN - 5TH FLOOR SOUTH



1 FLOOR PLAN - 5TH FLOOR SOUTH
SCALE: 1/8" = 1'-0"



Architect:
ARCHETYPE architects
48 Union Wharf Portland, Maine 04101
(207) 772-6022 Fax (207) 772-4056

Project:
DIVERSIFIED COMMUNICATIONS
PORTLAND, MAINE 04101

| Revisions: |
|------------|
| |
| |
| |
| |
| |

Date: 4 December 2012
Scale: AS NOTED
5TH FLOOR SOUTH FLOOR PLAN AND REFLECTED CEILING PLAN

A6