

DOOR SCHEDULE

Door Schedule					
NO.	DOOR ELEVATION TYPE	MATERIAL	DOOR SIZE	FRAME MATERIAL	NOTES
301A	NOTE 3	GL	3'-0" x 6'-8"	N/A	NOTES 2 & 3
301B	NOTE 3	GL	2'-8" x 6'-8"	N/A	NOTES 1, 2 & 3; CONTRACTOR TO FIELD VERIFY 2'-8" CLEAR WIDTH
302	NOTE 3	GL	3'-0" x 6'-8"	N/A	NOTES 2 & 3
303	NOTE 3	GL	3'-0" x 6'-8"	N/A	NOTES 2 & 3
304	NOTE 3	GL	3'-0" x 6'-8"	N/A	NOTES 2 & 3
305	NOTE 3	GL	3'-0" x 6'-8"	N/A	NOTES 2 & 3
306A	NOTE 3	GL	3'-0" x 6'-8"	N/A	NOTES 2 & 3
306B	NOTE 3	GL	3'-0" x 6'-8"	N/A	NOTES 2 & 3

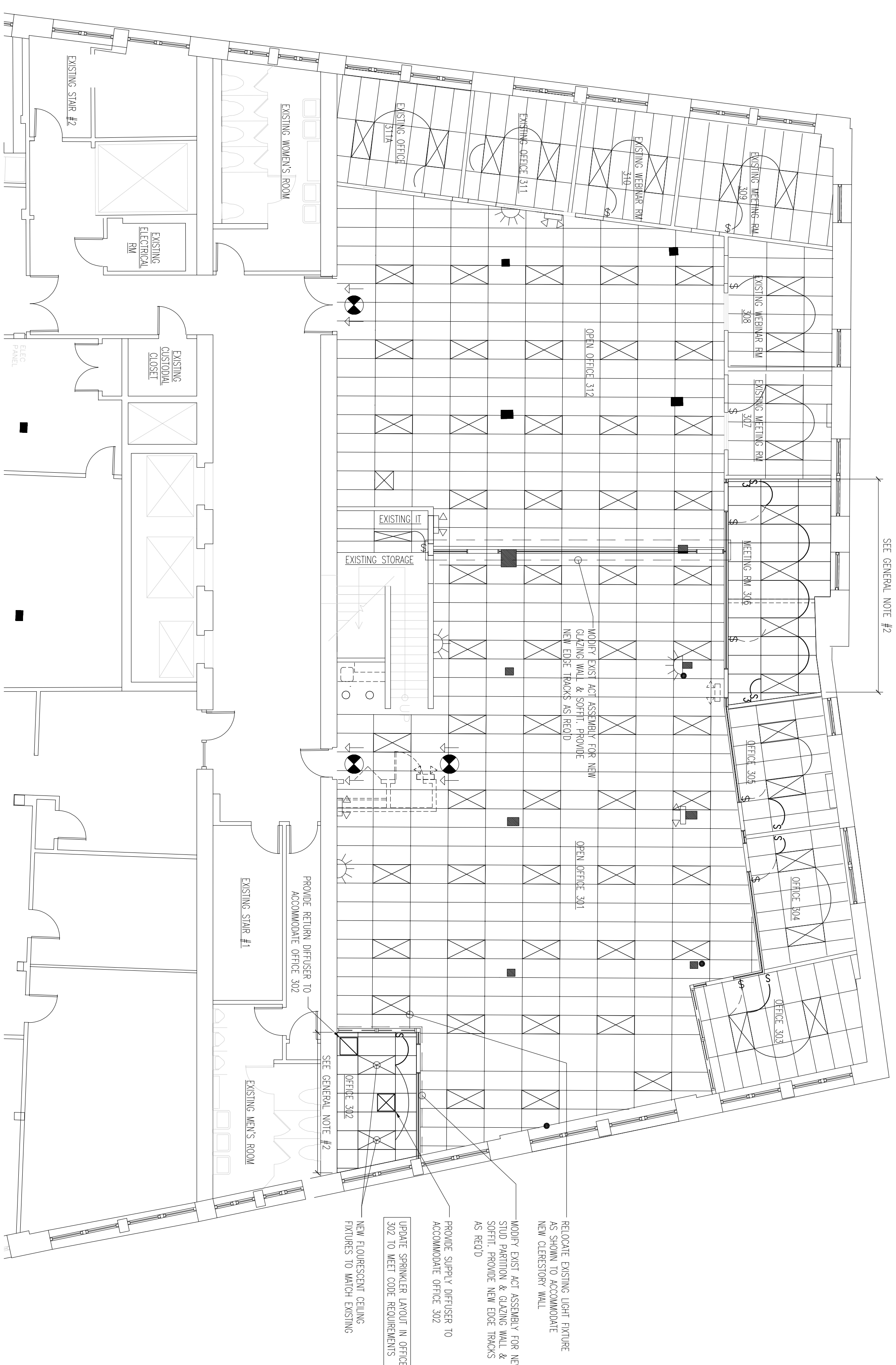
NOTES:
 1) PROVIDE DOOR & HARDWARE TO ENSURE MIN. 2'-8" CLEAR PASSAGE THROUGH DOOR
 2) SEE SHOP DRAWINGS FOR DOOR HARDWARE
 3) SEE SHOP DRAWINGS FOR GLASS DOOR ELEVATIONS

REFLECTED CEILING PLAN KEY

	EXISTING 2x4 CEILING LIGHT
	NEW SINGLE SWITCH
	THREE-WAY SWITCH
	NEW ELECTRICAL CONNECTIONS BETWEEN FLOORS
	EXISTING 4" RECESSED DOWNLIGHTS
	EMERGENCY LIGHTING & BATTERY PACK
	FIRE ALARM
	EXIT LIGHT AND OUTLET BOX, SIGN, DIRECTIONAL ARROWS AS INDICATED

GENERAL NOTES

1. ALLOW 10% ACT REWORK/REMOVE/IN/OUT (R/R) REMOVED AND/OR 2x4 TILES
2. PROVIDE NEW CEILING TIE TRACK SYSTEM AT TRAINING ROOM 311 & MEETING ROOM 302; REMOVE EXISTING TIE AND LIGHT FIXTURES AS MUCH AS POSSIBLE
3. FOR CLARITY, ONLY FIXTURES EFFECTED BY NEW WORK HAVE BEEN SHOWN; OTHERS NOT SHOWN ARE TO REMAIN UNLESS OTHERWISE NOTED IN THIS PROJECT'S O.C. SHALL VERIFY FIELD CONDITIONS
4. PROVIDE NEW LIGHT SWITCHES AS SHOWN; REMOVE EXISTING SWITCHES AND RELOCATE WIRING TO ACCOMMODATE NEW SWITCH LOCATIONS



	OWNER	DIVERSIFIED COMMUNICATIONS THIRD FLOOR PARTIAL TENANT FITOUT 121 FORE ST PORTLAND, ME 04101
	CONSULTANTS	
PROJECT NO. 002 COPYRIGHT: SHEET TITLE REFLECTED CEILING PLAN		
SHEET 3 OF 3 A104		