

DOOR SCHEDULE

Door Schedule					FRAME MATERIAL	NOTES
NO.	DOOR ELEVATION TYPE	MATERIAL	DOOR SIZE WIDTH	HEIGHT	THICK.	
301A	NOTE 3	GL	3'-0"	6'-8"	3/4"	N/A NOTES 2 & 3
301B	NOTE 3	GL	2'-8"	6'-8"	3/4"	N/A NOTES 1, 2 & 3; CONTRACTOR TO FIELD VERIFY 2'-8" CLEAR WIDTH
302	NOTE 3	GL	3'-0"	6'-8"	3/4"	N/A NOTES 2 & 3
303	NOTE 3	GL	3'-0"	6'-8"	3/4"	N/A NOTES 2 & 3
304	NOTE 3	GL	3'-0"	6'-8"	3/4"	N/A NOTES 2 & 3
305	NOTE 3	GL	3'-0"	6'-8"	3/4"	N/A NOTES 2 & 3
306A	NOTE 3	GL	3'-0"	6'-8"	3/4"	N/A NOTES 2 & 3
306B	NOTE 3	GL	3'-0"	6'-8"	3/4"	N/A NOTES 2 & 3
NOTES:						

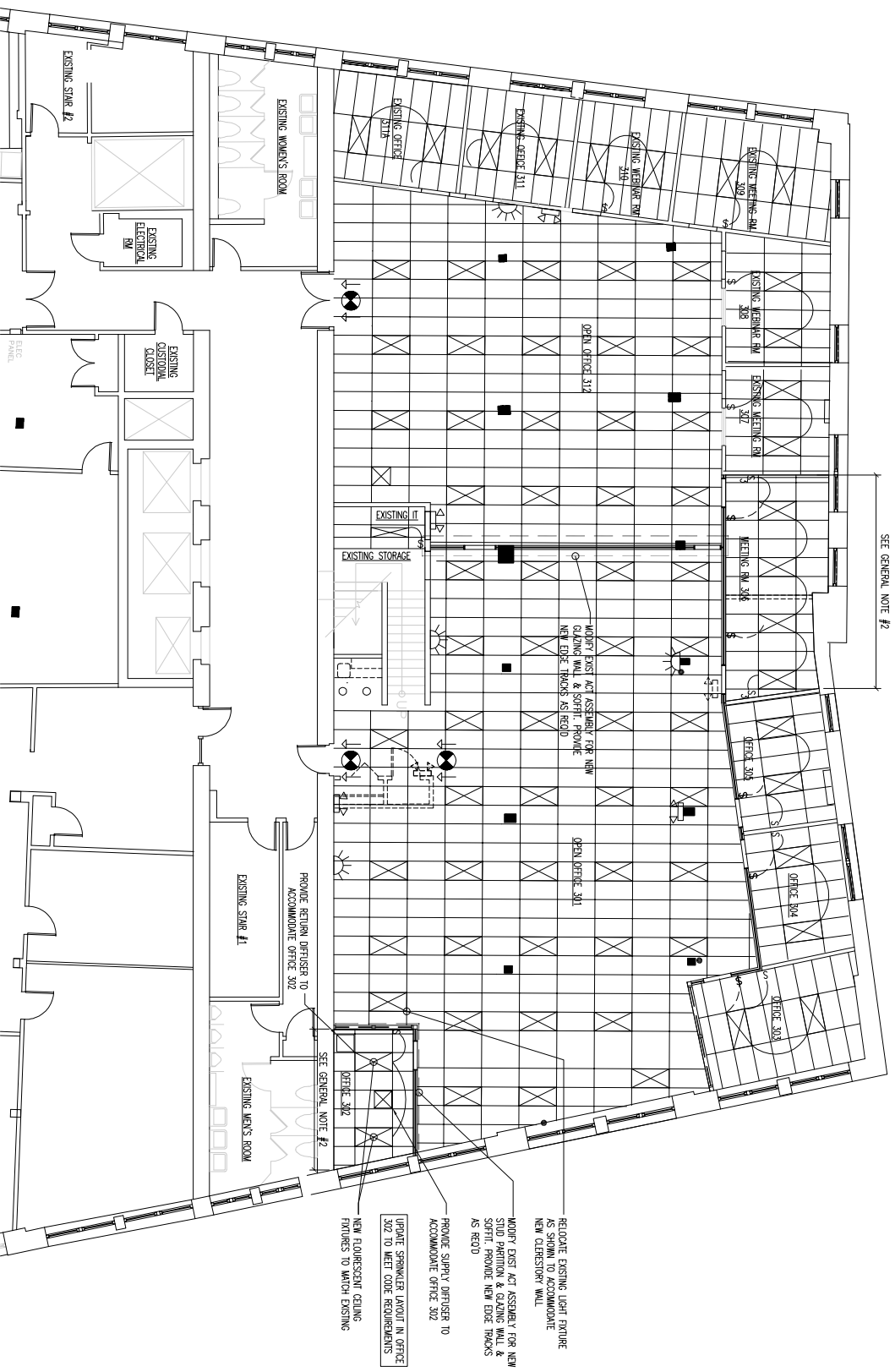
- 1) PROVIDE DOOR & HARDWARE TO ENSURE MIN. 2'-8" CLEAR PASSAGE THROUGH DOOR
- 2) SEE SHOP DRAWINGS FOR DOOR HARDWARE
- 3) SEE SHOP DRAWINGS FOR GLASS DOOR ELEVATIONS

REFLECTED CEILING PLAN KEY

	EXISTING 2'x4' CEILING LIGHT
	NEW SINGLE SWITCH
	THREE-WAY SWITCH
	NEW ELECTRICAL CONNECTIONS BETWEEN RANGES
	EXISTING # RECESSED DOWNLIGHTS
	EMERGENCY LIGHTING & BATTERY PACK
	FIRE ALARM
	EXIT LIGHT AND OUTLET BOX, SIGN, DIRECTIONAL ARROWS AS INDICATED

GENERAL NOTES

1. ALLOW 10% ACFT REPLACEMENT/INFILL (FORM REMOVED) WALLS) 2'x4' TILES
2. PROVIDE NEW CEILING TILE TRUCK SYSTEM AT TRAINING ROOM, SIT & MEETING ROOM, COR. BEUSE EXISTING TILE AND LIGHT FIXTURES AS MUCH AS POSSIBLE
3. FOR CLARITY, ONLY EXISTING ELEMENTS BY NEW WORK HAVE BEEN SHOWN, OTHERS NOT SHOWN FOR THIS PROJECT, C.I.C. SHALL VERIFY FIELD CONDITIONS
4. PROVIDE NEW LIGHT SWITCHES AS SHOWN, REMOVE EXISTING SWITCHING AND RELOCATE WIRING TO ACCOMMODATE NEW SWITCH LOCATIONS



OWNER	DIVERSIFIED COMMUNICATIONS THIRD FLOOR PARTIAL TENANT FITOUT 121 FORE ST PORTLAND, ME 04101
CONSULTANTS	

SHEET TITLE	REFLECTED CEILING PLAN
PROJECT NO.	002
DATE	ISSUED FOR
SHEET NO.	3
OF	3