

DRYVIT DRAINAGE MAT

A Flexible Mat 1/8 in (3.2 mm) Thick for Use With the Outsulation® RMD or Outsulation® SMD Systems

Springer's Rooftop
Exterior Plaster
System

DS446

Description and Uses

Dryvit Drainage Mat is a flexible, thermally pre-formed, in a zigzag configuration, mat made of polyamide and produced in a pale blue color for identification. The product is packaged in a 39 in (990 mm) by 250 ft (76 m) roll and is approximately 1/8 in (3.2 mm) thick. Dryvit Drainage Mat is used to create a drainage plane for the Outsulation RMD

for the Outsulation RMD or Outsulation SMD Systems.

Installation

The Dryvit Drainage Mat is fastened to the wall using 1/2 in (12.7 mm) staples or roofing nails spaced 12 in (305 mm) vertically by 16 in (406 mm) horizontally. It is installed over the water-resistant barrier so that the corrugated "V" pattern is oriented vertically. Refer

to published Outsulation RMD System Application Instructions, DS143, or Outsulation SMD System Application Instructions, DS123.

Storage

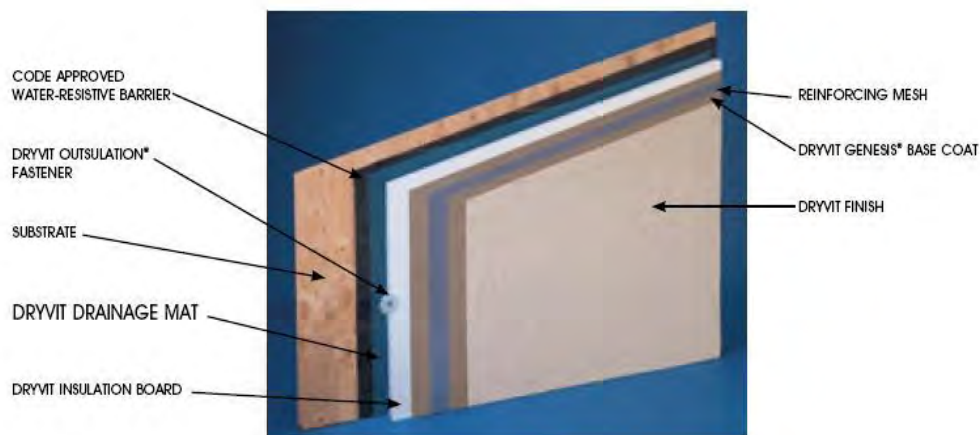
Store Dryvit Drainage Mat rolls in a horizontal position and out of direct sunlight.

Technical and Field Services

Available on request

Typical Physical Properties

Test	Method	Results (Mean Value)
Weight	Lab Method	5.9 oz/sq yard
Tensile Strength (Machine Direction)	DIN 53857	4.28 lbs/inch
Tensile Strength (Cross Machine Direction)	DIN 53857	5.71 lbs/inch
Thickness	Lab Method	0.13 inch



Dryvit Systems, Inc.
One Energy Way
West Warwick, RI 02893
800-556-7752
www.dryvit.com

Information contained in this product sheet conforms to the standard detail recommendations and specifications for the installation of Dryvit Systems, Inc. products as of the date of publication of this document and is presented in good faith. Dryvit Systems, Inc. assumes no liability, expressed or implied, as to the architecture, engineering or workmanship of any project. To ensure that you are using the latest, most complete information, contact Dryvit Systems, Inc.

For more information on [Dryvit Systems](#) or [Continuous Insulation](#), visit these links.

