

DATA LEGEND

COVER PLATE SPECIFICATIONS	
MATERIAL	1/8" STAINLESS STEEL
FINISH	14 SATIN FINISH
VOLTAGE	120V AC
INDICATORS	WHITE ILLUMINATING LED

Push Button Style

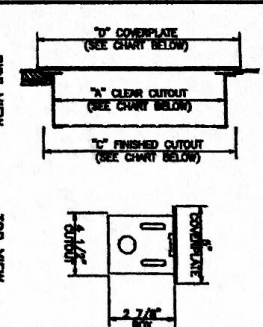
KEY CYLINDER TYPE

■ STANDARD □ MEDCO (VANDAL RESISTANT)

PHASE I & II FIRE SERVICE

ASME/ANSI A17.1-2013 FOR WALK

SPECIAL FIRE KEY: VALE #3502



STATION	"D" DIM	"A" DIM	"C" DIM
S10	8 3/4"	8 1/4"	8 1/8"
S12	14"	13 1/2"	13 1/8"
S15	14 1/2"	15 3/8"	15 3/8"
S20	20"	18 1/2"	19 3/8"

THE DRAWING REPRESENTS GENERAL DESIGN INTENT ONLY. ACTUAL AS-BUILT DETAILS MAY VARY FROM THAT SHOWN.

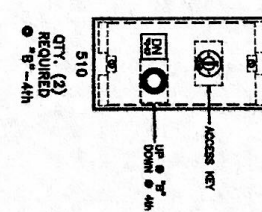
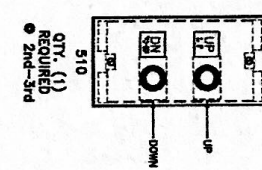
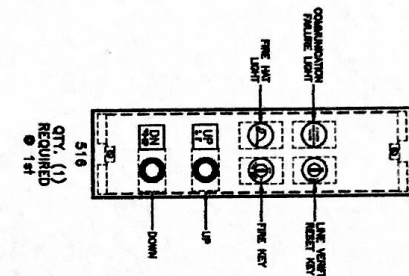
SPRINGER'S JEWELRY

HALL FIXTURES

STANDARD HALL STATIONS

SPRINGER'S JEWELRY
FALMOUTH, ME

CONTRACT NO. 187229 SHEET NO. 2 OF 2



DATE	BY	CHGD	DESCRIPTION
3-08-17	swd		ORIGINAL

*REVIEWED 4.7.17
MIM E. STAFF RA*