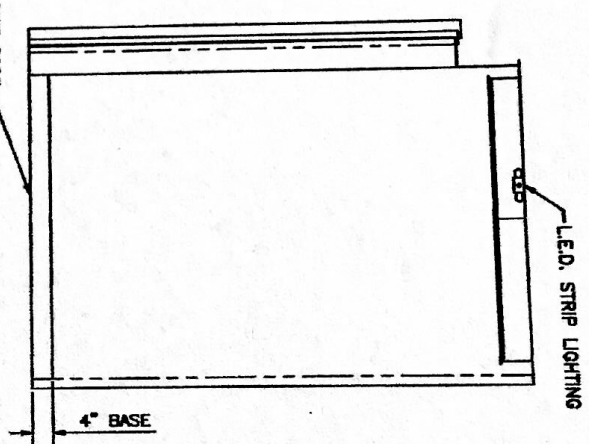
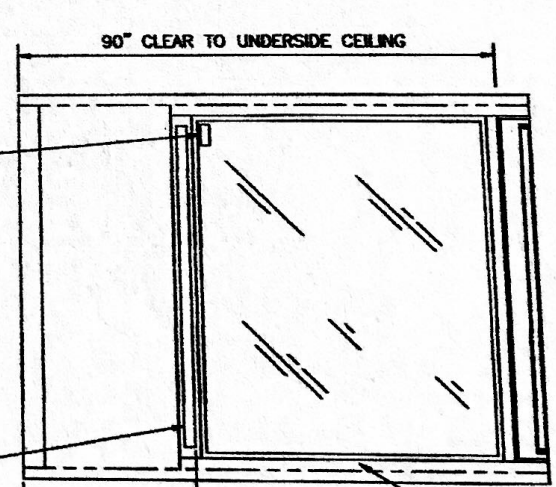


Front Elevation

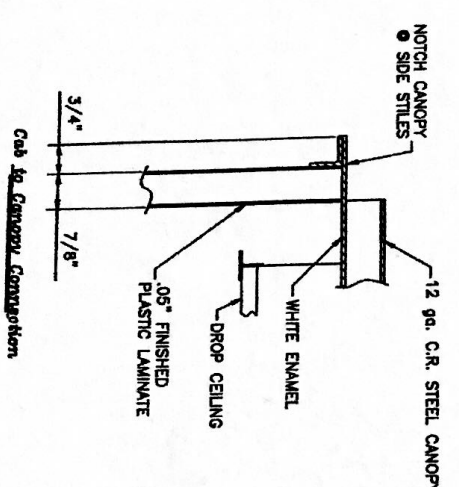


Side Elevation
(Side B Between smother)

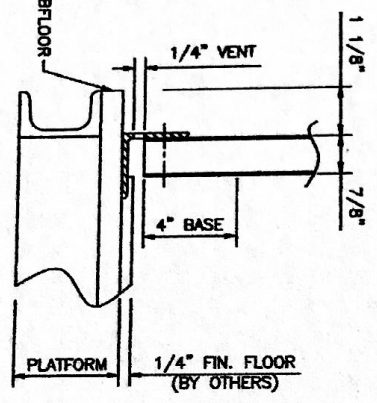


Rear Elevation

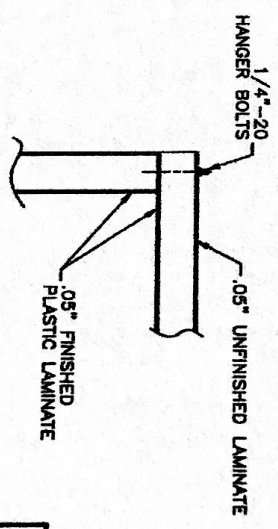
ALL GLASS SHALL BE MARKED IN ACCORDANCE WITH ANSI Z97.1. MARKING MUST REMAIN VISIBLE.



Cab to Canopy Connections



Cab to Platform Connections



Corrugated Fastening Detail

DATE	BY	CHKD	DESCRIPTION
5-09-17	svd		ORIGINAL

THIS DRAWING REPRESENTS GENERAL DESIGN INTENT ONLY. ACTUAL AS-BUILT DETAILS MAY VARY FROM WHAT SHOWN.

CANTON ELEVATOR
N C O

ELEVATOR CAB
SECTIONS AND ELEVATIONS

PROJECT
SPRINGER'S JEWELRY
FALMOUTH, ME

CONTRACT NO. 18729

SHEET NO. 2 OF 2

REVIEWED 4-7-17
DAN E. DUFFNER