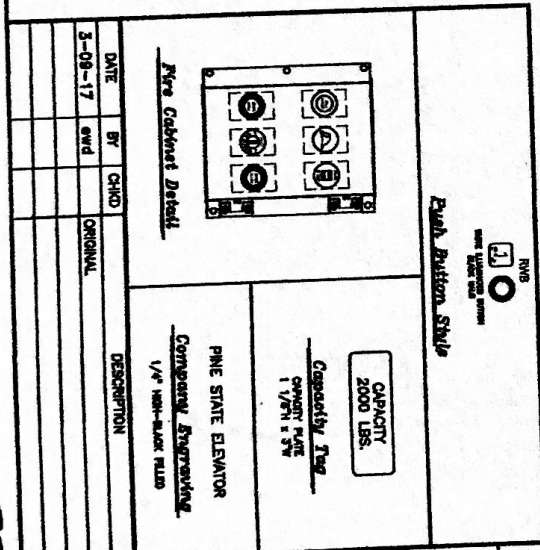
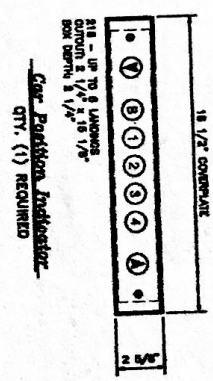
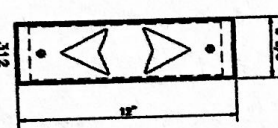


Translucent Lenses
 QTY. (1) REQUIRED
 CUTOUT: 2 15/16" x 10 1/2"
 BOX DEPTH: 3 5/8"



DATE	BY	CHKD	DESCRIPTION
3-08-17	ewd	ORIGINAL	

DATA LEGEND

COVER PLATE SPECIFICATIONS
 MATERIAL 1/8" STAINLESS STEEL
 FINISH 14 SATIN FINISH
 VOLTAGE 120V AC
 INDICATORS WHITE ILLUMINATING LED
 NUMBER OF OPENINGS 5
 MAIN FIRE RETURN 1st
 SEE DIAGRAMS FOR FLOOR DESIGNATIONS

KEY SWITCHES / INDICATORS
 GAL. STANDARD CHICAGO
 MEDICO (VANDAL RESISTANT)

(1) LIGHT ON/OFF KEY
 (2) FAN ON/OFF KEY
 (3) FAN OFF/ON/Hi KEY
 (4) OFF/LIGHT/FAN KEY
 (5) IND. SERV. ON/OFF KEY
 (6) ELEC. EYE CUTOUT KEY
 (7) ACCESS ON/OFF KEY
 (8) MASS. EMIT ON/OFF KEY
 (9) "MEDICAL EMERGENCY" INDICATOR
 (10) DOOR HOLD KEY
 (11) OTHER:
 (12) OTHER:

CONFIRM →

PHASE I & II FIRE SERVICE
 ASME/ANSI A17.1-2013 FOR MAINE
 SPECIAL FIRE KEY: YALE #3802

STOP SWITCH KEYPED
 COVER HINGE OPPOSITE HAND
 NOTING REQUIRED

TELEPHONE OPTIONS
 HANDS FREE PHONE COVER MOUNTED
 (INCLUDES LINE VERIFIER)

THIS DRAWING REPRESENTS GENERAL DESIGN INTENT ONLY.
 ACTUAL MEASUREMENTS SHALL PREVAIL OVER THIS DRAWING.

CANTON ELEVATOR

CAB FIXTURES
 CAB PANEL w/ EMER. LIGHT & FIRE CABINET

PROJECT
SPRINGER'S JEWELRY
 FALMOUTH, ME

CONTRACT NO. 18729 SHEET NO. 1 OF 2

REVIEWED 4-7-17
 MORGAN & JOHNSON RA