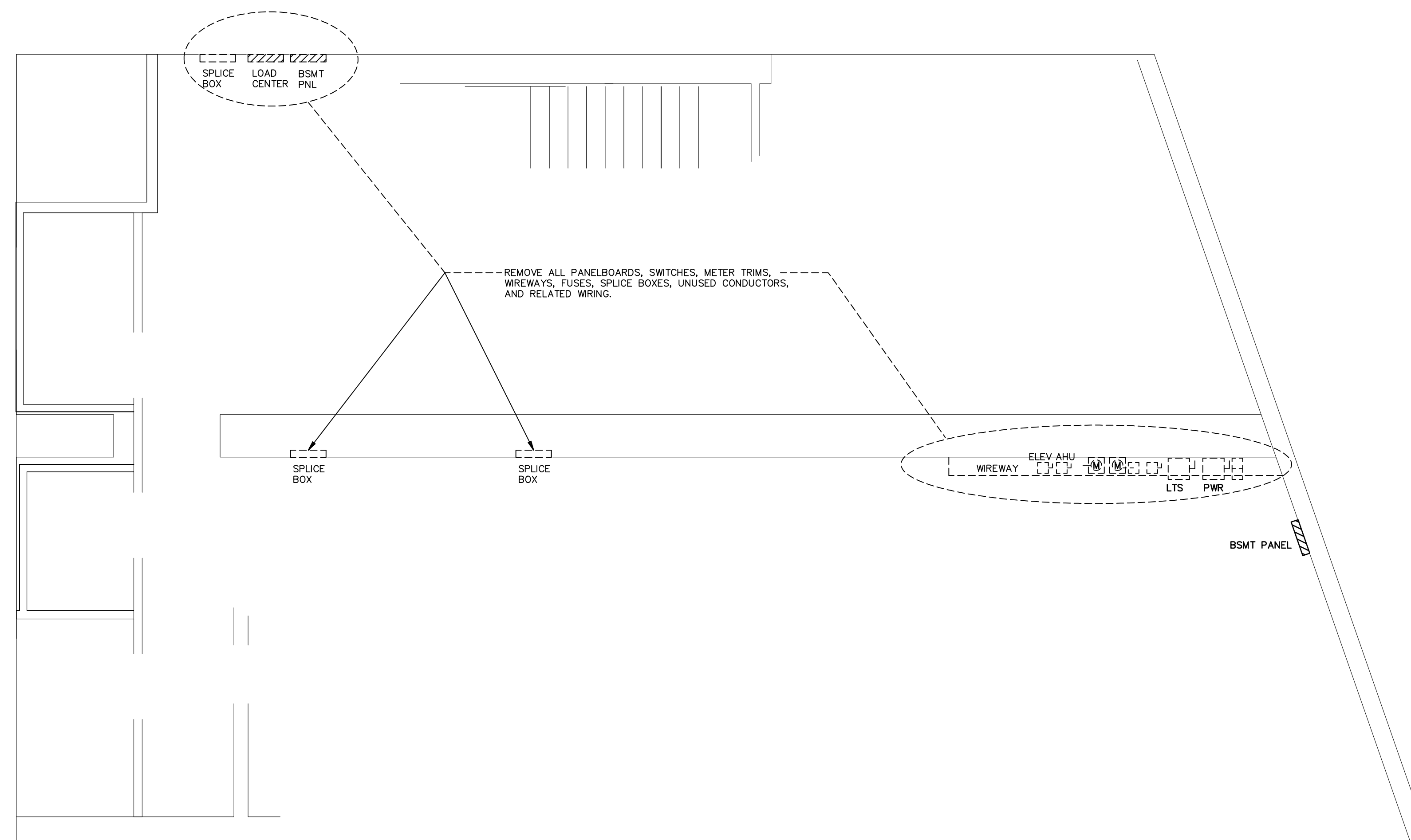


BASEMENT POWER PLAN

SCALE: 1/4" = 1'-0"



BASEMENT DEMOLITION PLAN

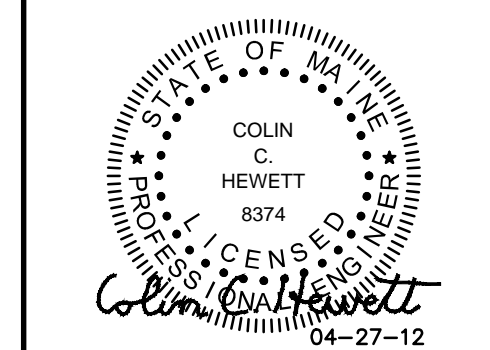
SCALE: 1/4" = 1'-0"

GENERAL NOTES

1. THIS PLAN HAS BEEN COMPILED FROM FIELD OBSERVATIONS. FIELD VERIFY ALL CONDITIONS AND OBSERVE NECESSARY SAFETY PRECAUTIONS BEFORE DOING ANY WORK.
2. RUN SURFACE WIRING AS INCONSPICUOUS AS POSSIBLE, IN WALL AND CEILING CORNERS WHERE POSSIBLE, AS INDICATED.
3. DEVICES WITH CONTINUOUS LINETYPE ——— INDICATE NEW UNLESS OTHERWISE INDICATED.
4. DEVICES WITH DASHED LINETYPE - - - - INDICATE EXISTING TO REMAIN UNLESS OTHERWISE INDICATED.
5. DEVICES WITH HIDDEN LINETYPE - - - - - INDICATE REMOVE UNLESS OTHERWISE INDICATED.
6. IN EVENT ANY UNSAFE WIRING IS ENCOUNTERED, IMMEDIATELY NOTIFY ENGINEER FOR CORRECTIVE ACTION.
7. PROVIDE OWNER 3 DAYS NOTICE OF ANY POWER OUTAGES.

brian e. duffy
associates
65 falmouth road
falmouth, me. 04105
tel: 207-773-9500

Hewett & Whitney
ENGINEERS & DESIGNERS
ELECTRICAL & MECHANICAL SYSTEMS
161 MAIN STREET WINTHROP, MAINE
Tel 207-537-6969 Fax 207-537-7584
PLOT DATE: Apr 27, 2012



RENOVATIONS TO:
**SPRINGER'S
JEWELERS**
580 CONGRESS STREET
PORTLAND, MAINE

date: APRIL 27, 2012

drawn by: CCH/ELH

scale: 1/4" = 1'-0"

sheet title:
**BASEMENT
POWER PLANS**

sheet:

E2.0

