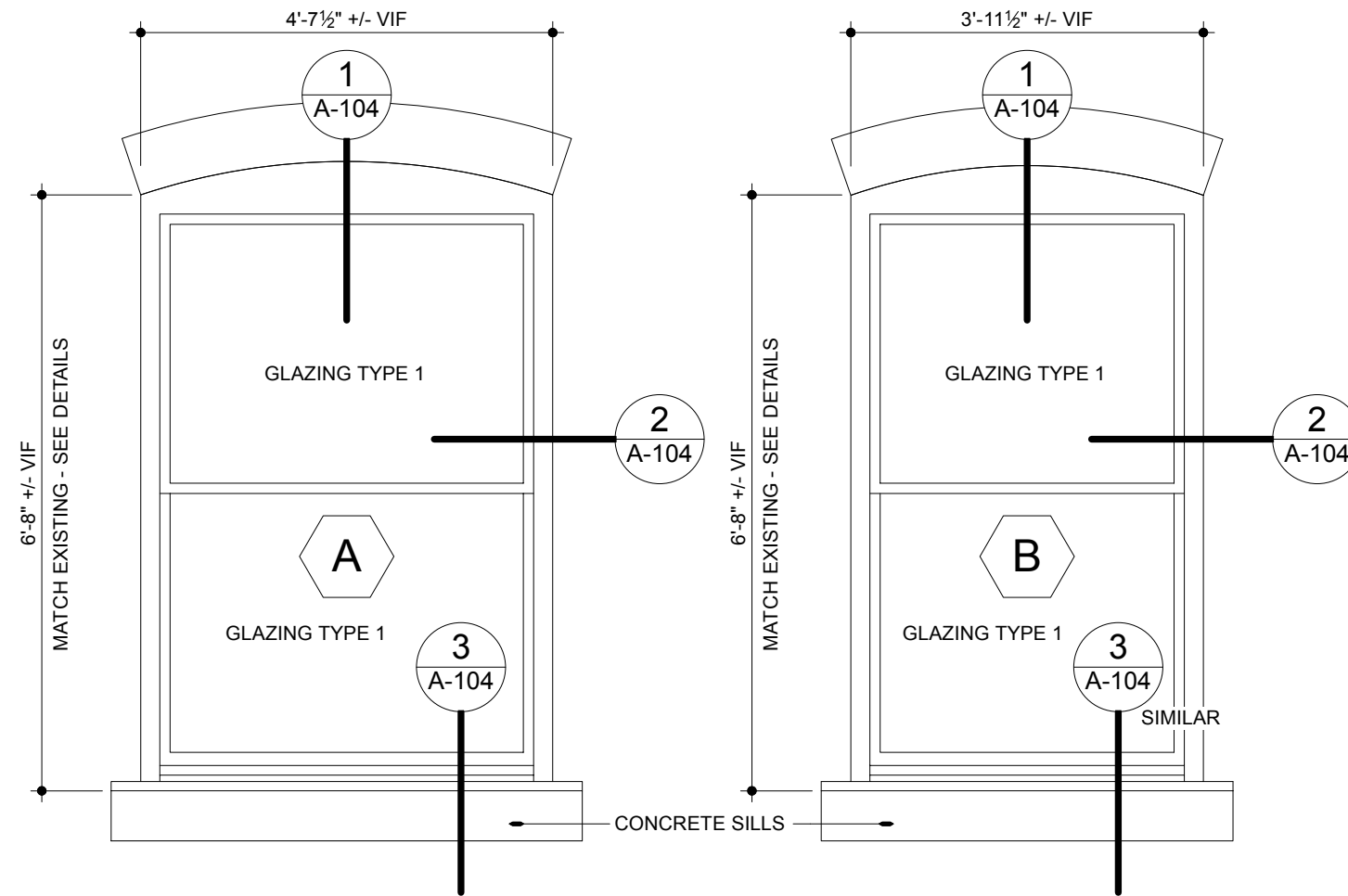
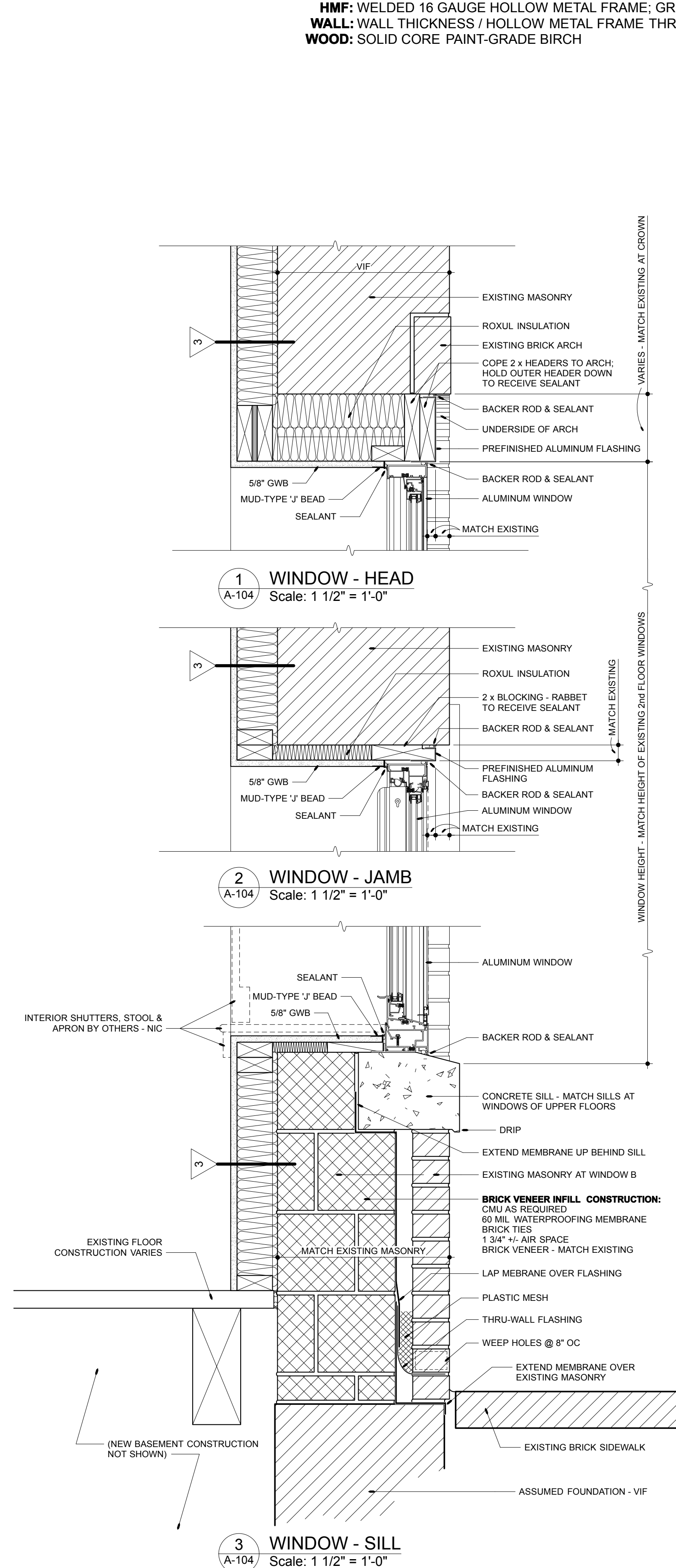


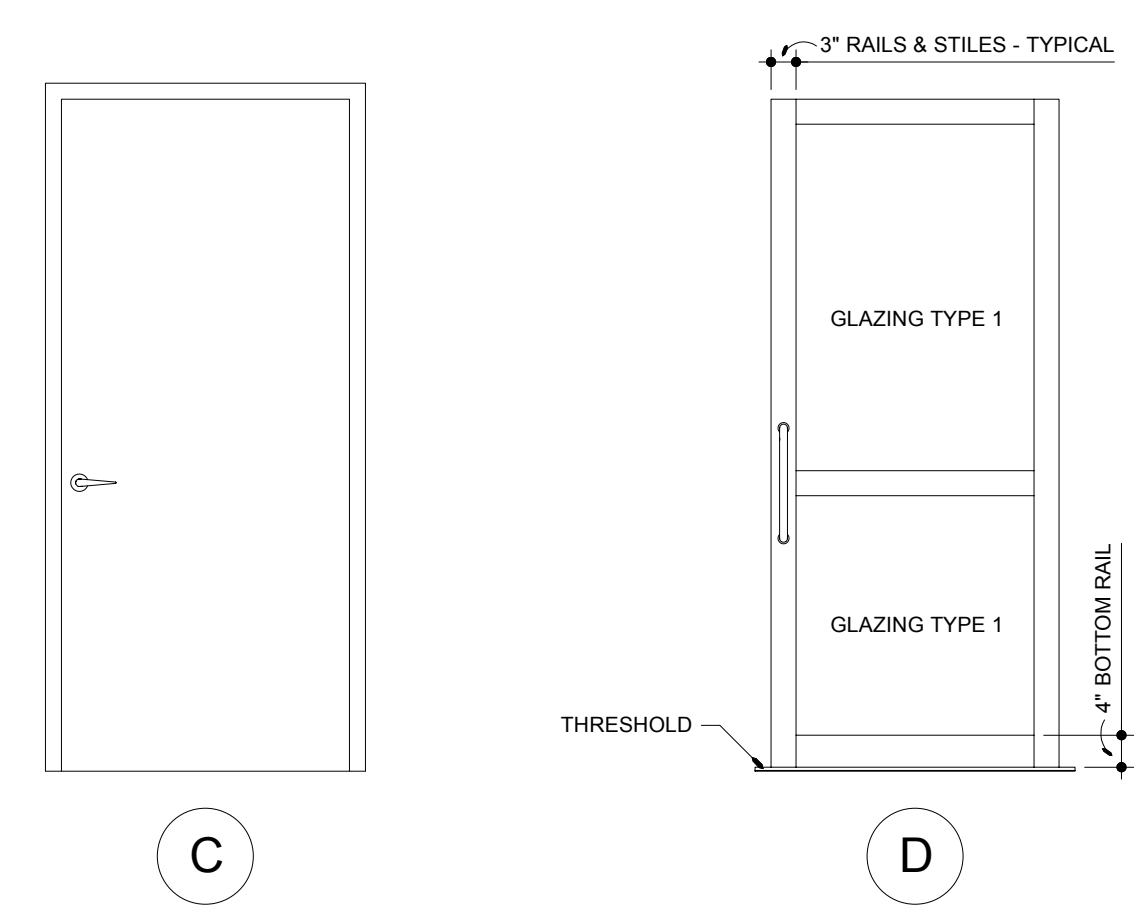
# Door Schedule

DOOR NO.	LOCATION	DOORS				FRAMES				LABEL	DOOR NO.	REMARKS		
		WIDTH	HEIGHT	THICKNESS	TYPE	MATERIAL	MATERIAL	WALL	HEAD				JAMB	SILL
001	MACHINE ROOM	3'0"	6'2"	1 3/4"	C	WOOD	HMF	6"				90 MINUTE	001	FIELD VERIFY DOOR HEIGHT PRIOR TO FABRICATION (LOW EXISTING CEILING)
002	TOILET ROOM	3'0"	6'2"	1 3/4"	C	WOOD	HMF	4 3/4"					002	COAT HOOK
003	UTILITY ROOM	3'0"	6'2"	1 3/4"	C	WOOD	HMF	4 3/4"					003	
101	FREE STREET ENTRANCE	3'0"	7'0"	1 3/4"	D	ALUMINUM	ALUMINUM STOREFRONT	4 1/2"					101	TEMPERED GLAZING; HARDWARE SET 1
102	ELEVATOR SHAFT	3'0"	7'0"	1 3/4"	C	WOOD	HMF	9 1/2"				90 MINUTE	102	HD LOCKSET; WALL THICKNESS APPROXIMATE - VIF

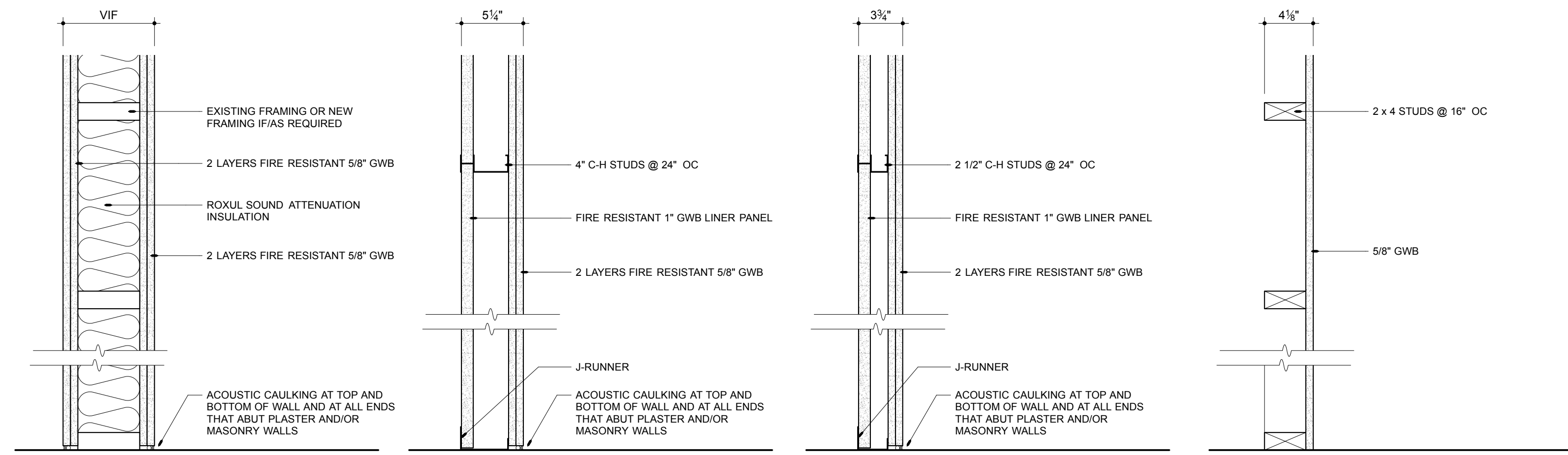
**HARDWARE SET 1:** "ADAMS" ELECTRIC STRIKE AND CARD READER; 1/2" HIGH "NATIONAL" OR "ZERO" ALUMINUM THRESHOLD; BRUSHED STAINLESS 1" DIAMETER DOOR PULLS  
**HD LOCKSET:** HEAVY-DUTY LOCKSET  
**HMF:** WELDED 16 GAUGE HOLLOW METAL FRAME; GRIND ALL JOINTS SMOOTH  
**WALL:** WALL THICKNESS / HOLLOW METAL FRAME THROAT DIMENSION  
**WOOD:** SOLID CORE PAINT-GRADE BIRCH



**WINDOW TYPES**  
Scale: 1/2" = 1'-0"



**DOOR TYPES**  
Scale: 1/2" = 1'-0"

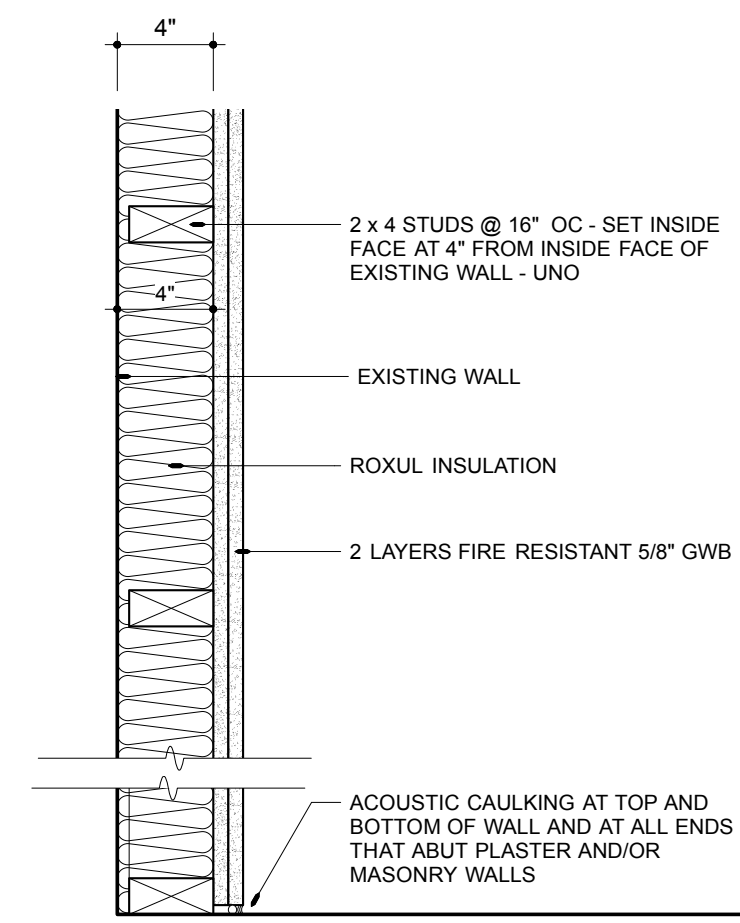


**ELEVATOR SHAFT WALL**  
Scale: 1 1/2" = 1'-0"

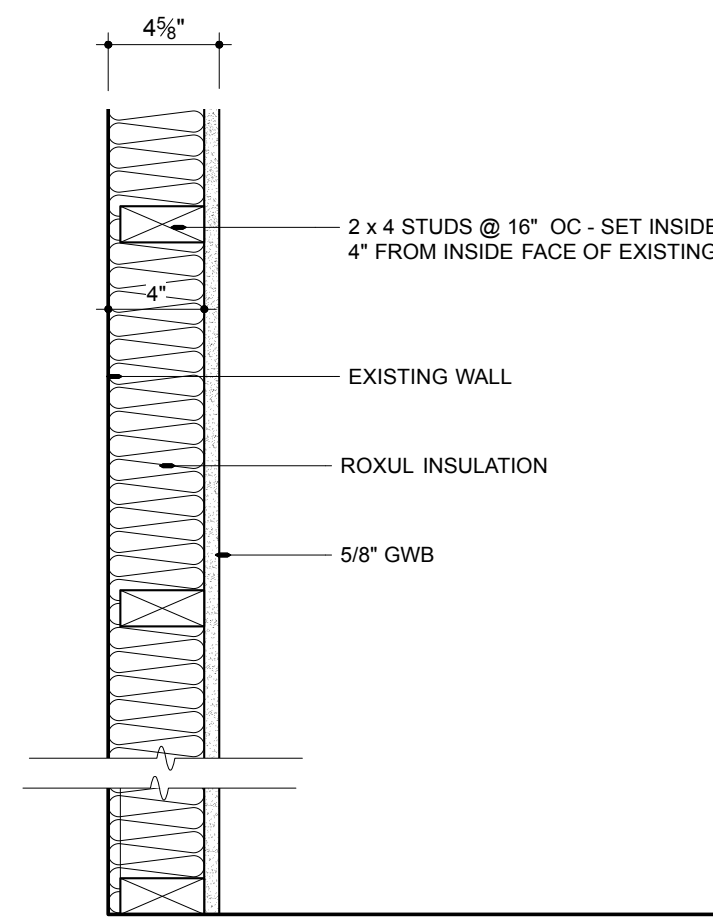
**SHAFT WALL - 4"**  
Scale: 1 1/2" = 1'-0"

**SHAFT WALL - 2 1/2"**  
Scale: 1 1/2" = 1'-0"

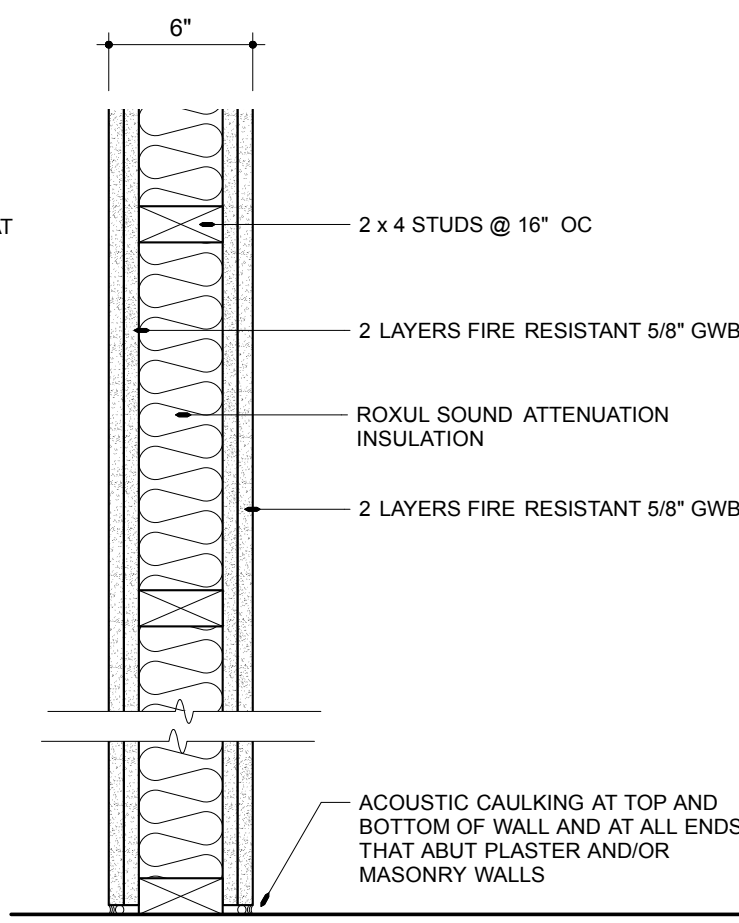
**CHASE WALL**  
Scale: 1 1/2" = 1'-0"



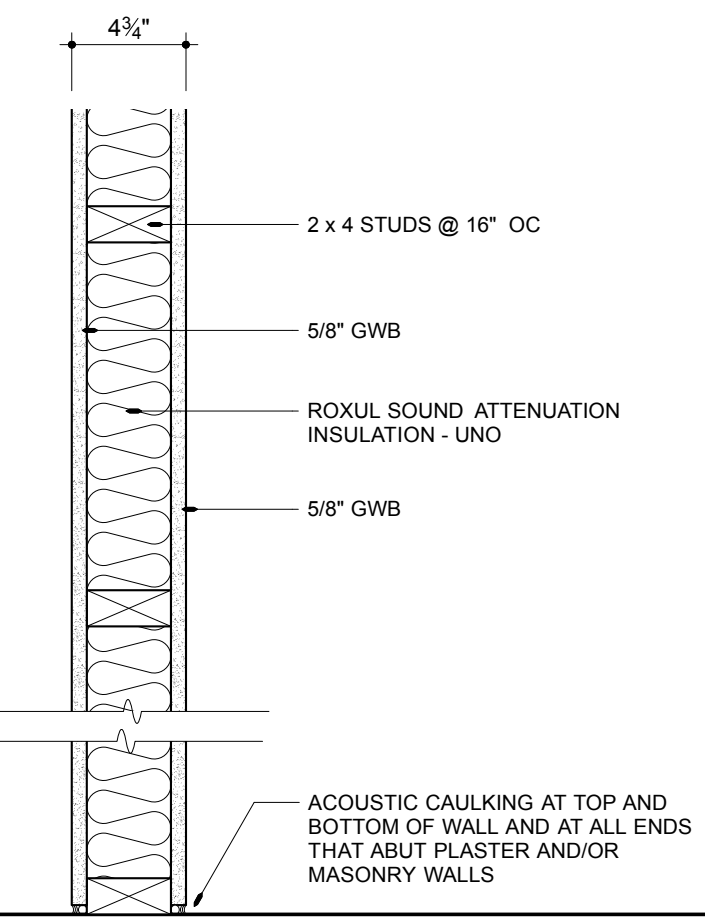
**MACHINE ROOM WALL**  
Scale: 1 1/2" = 1'-0"



**INSULATED INNER WALL**  
Scale: 1 1/2" = 1'-0"



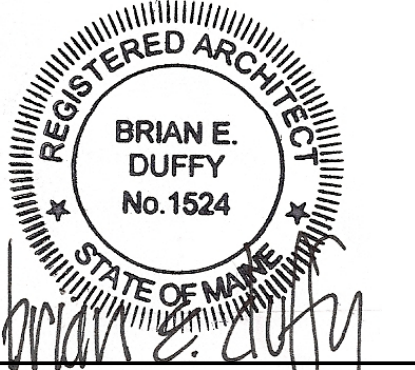
**2 HOUR PARTITION**  
Scale: 1 1/2" = 1'-0"



**TYPICAL PARTITION**  
Scale: 1 1/2" = 1'-0"

**PARTITION TYPES**  
Scale: 1 1/2" = 1'-0"

brian e. duffy  
associates  
65 falmouth road  
falmouth, me. 04105  
tel: 207-773-9500



RENOVATIONS TO:  
**SPRINGER'S  
JEWELERS**  
580 CONGRESS STREET  
PORTLAND, MAINE

date: APRIL 27, 2012  
drawn by: WJT  
scale: AS NOTED

sheet title:  
**DOORS  
WINDOWS &  
PARTITION  
TYPES**

sheet:  
**A-104**