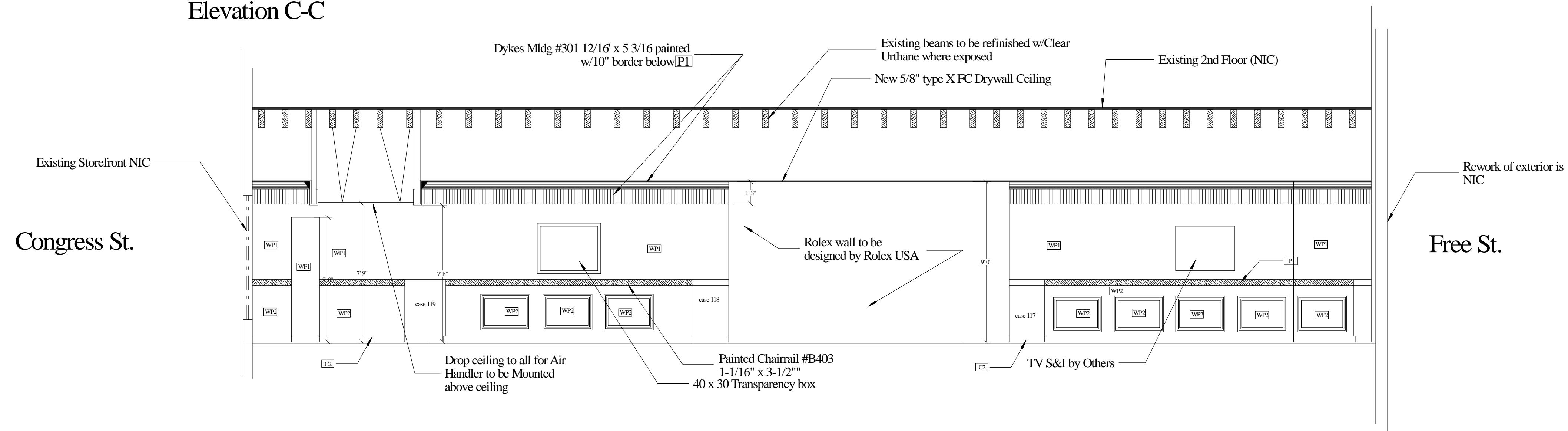
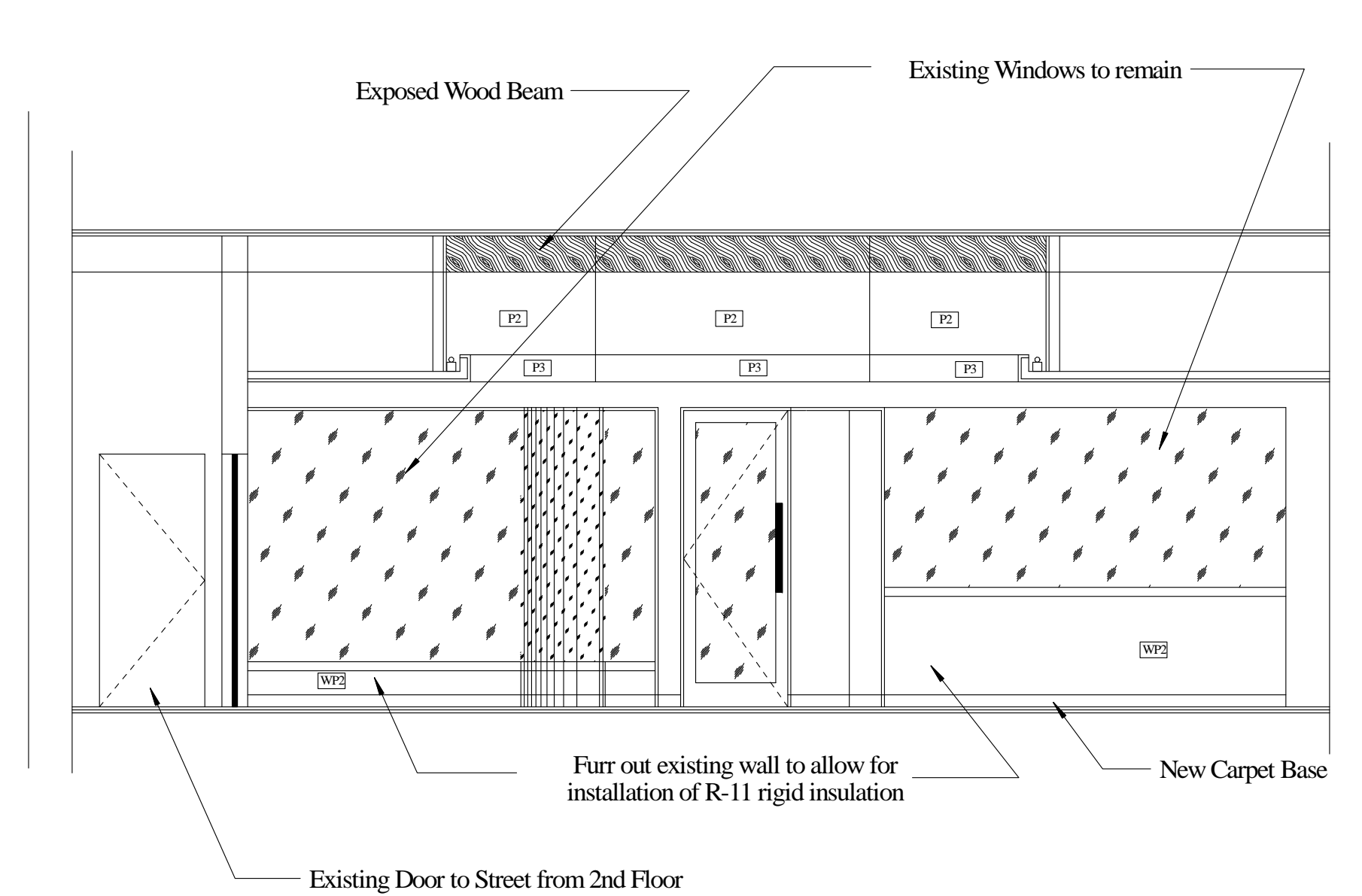


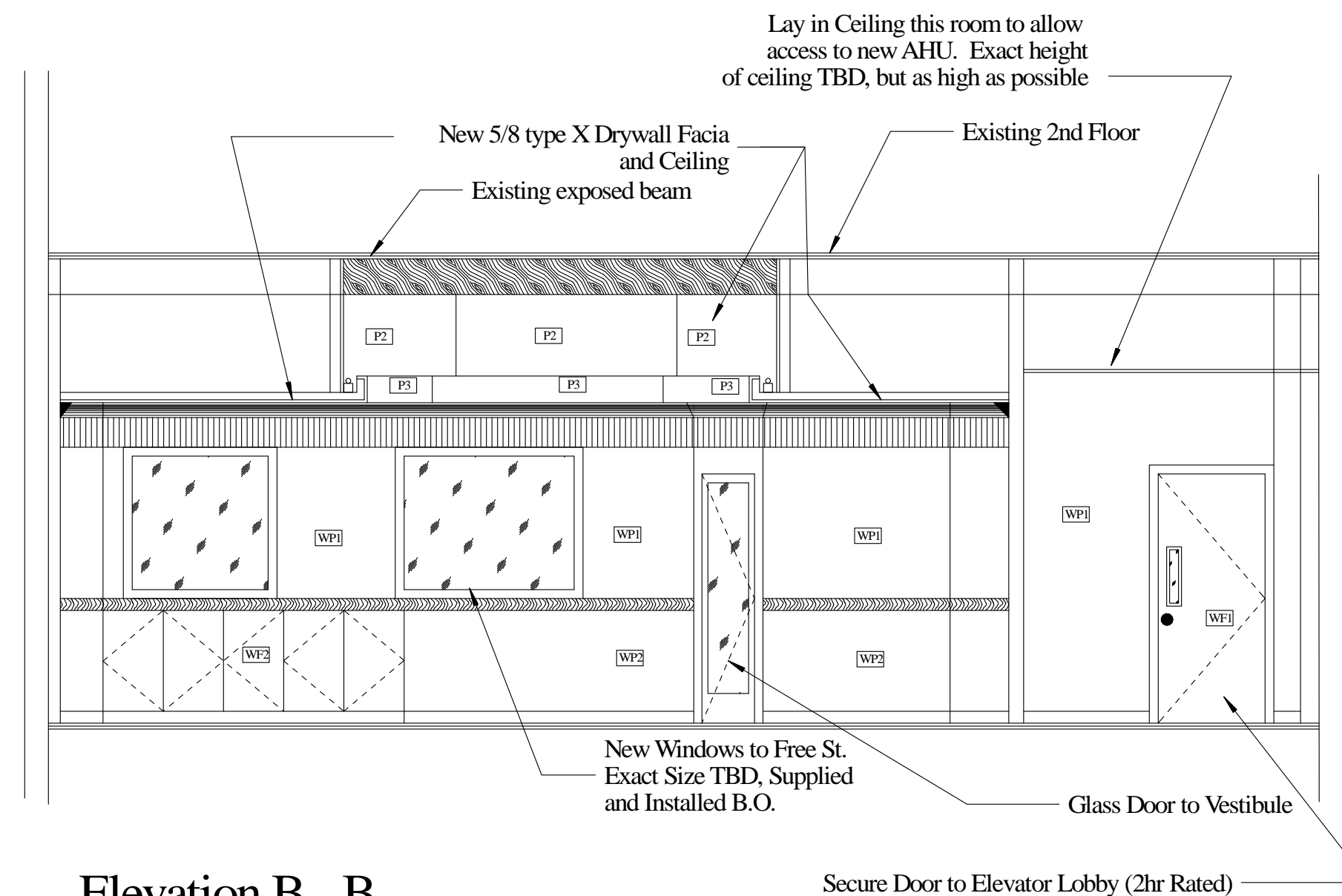
Elevation C-C



Elevation D-D



Elevation A - A



Elevation B - B

brian e. duffy
associates

65 falmouth road
falmouth, me. 04105
tel: 207-773-9500

RAD Construction Consultants Inc
184 S. Livingston Ave.
Suite 9-334
Livingston, NJ 07039

973-992-3435
973-740-9426(F)

rdykman@radcci.com
www.radcci.com

RENOVATIONS TO:
**SPRINGER'S
JEWELERS**
580 CONGRESS STREET
PORTLAND, MAINE

date: APRIL 27, 2012

drawn by: RAD

scale: AS NOTED

sheet title:

ELEVATIONS

sheet:

A4