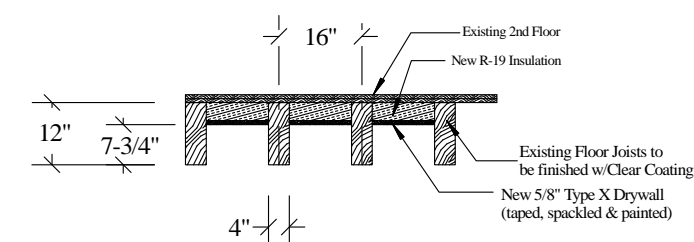
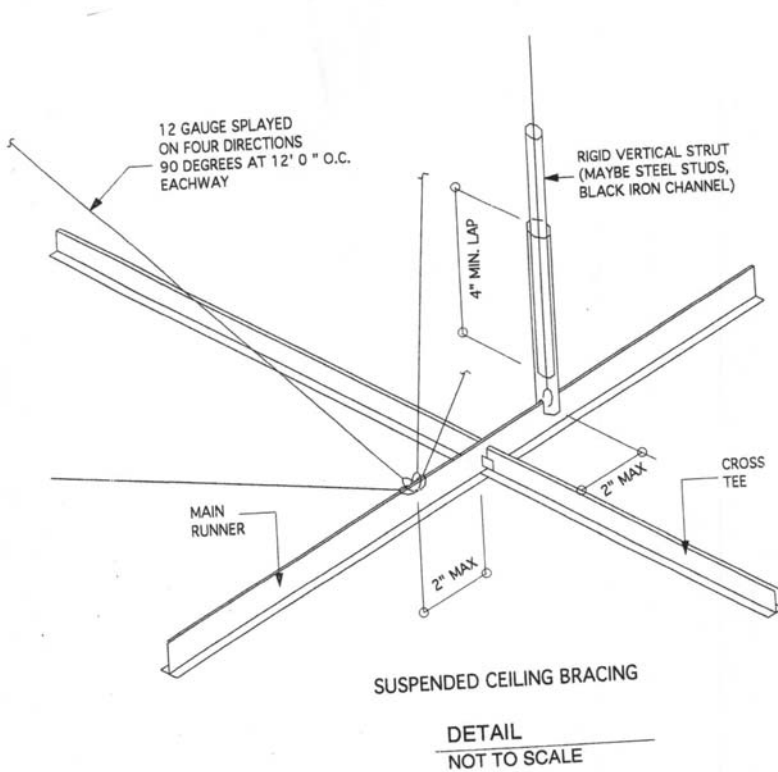


Detail @ Light Cove 2 - 2



Detail @ existing Beams 1 - 1



DETAIL NOT TO SCALE

**Steel Frame Ceilings/Furring Channels or Studs**

**DESCRIPTION**  
There are three types of steel furring members for the screw attachment of gypsum wallboard ceilings.  
1. Furring Channels  
2. Resilient Furring Channels  
3. Steel Studs  
All three are suitable for fastening to the lower chord of steel joists or to carrying channels in suspended ceiling constructions. Furring Channels are secured with clips or tie wires. Resilient Furring Channels shall be secured with wire ties. Steel Studs shall be attached with tie wires as shown on page 93. Gold Bond® Gypsum Wallboard shall be applied using gypsum drywall screws spaced not greater than 12" o.c.

**SPECIFICATIONS**  
See CSI Metal Framing Specifications on page 90.

**DETAILS**  
SPLICE JOINT FOR STUDS  
4 PAN HEAD SCREWS EACH SIDE  
16" LENGTH OF TRACK  
FURRING CHANNEL SPLICE JOINT  
8" MIN. LAP  
TIE WIRES  
1/2" CHANNELS 4" O.C. MAX.  
1" O.C. CHANNELS 4" O.C. MAX.  
SPACING BETWEEN STUDS 24" O.C.  
FURRING CHANNEL DETAILS

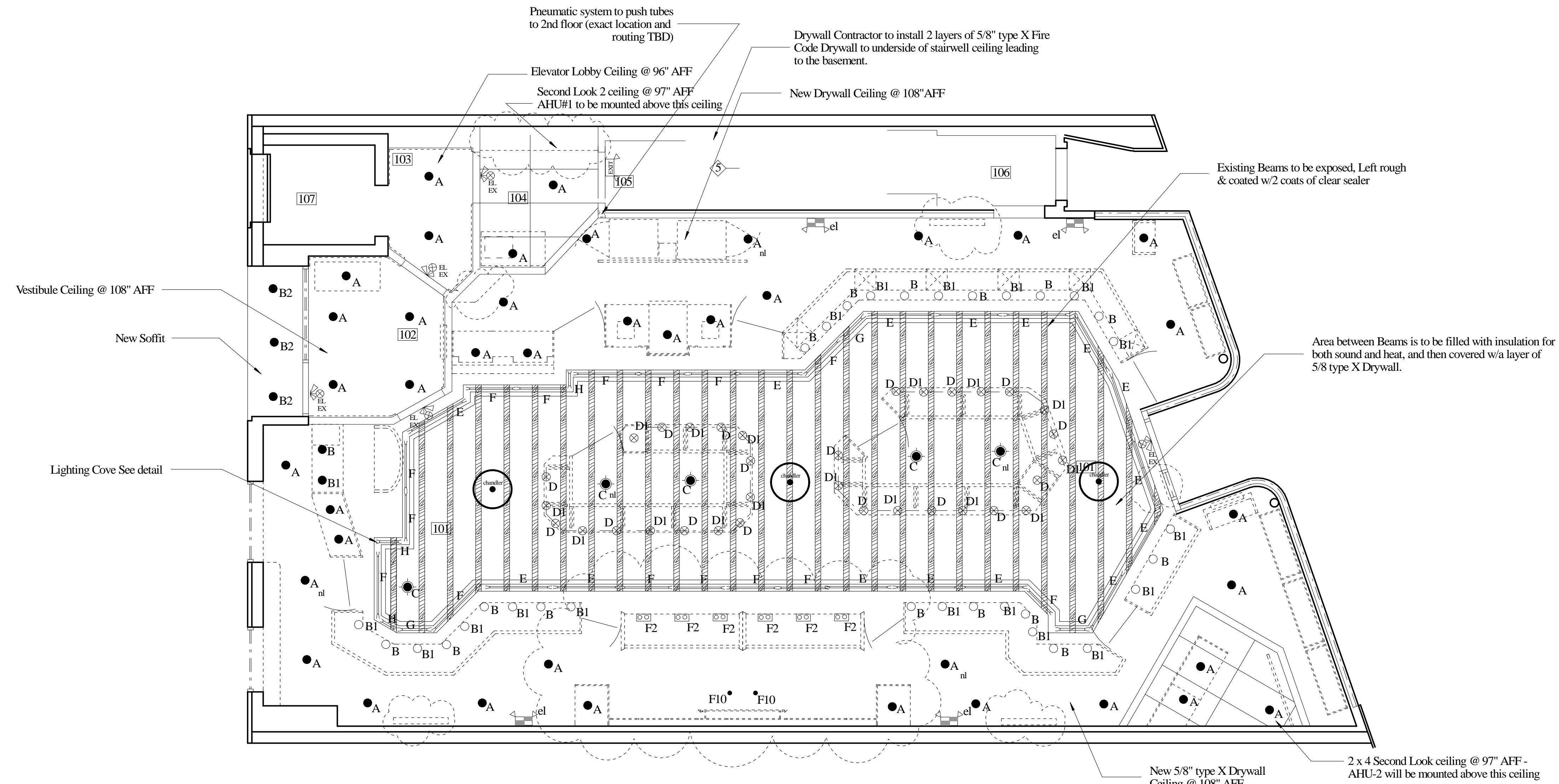
**RECOMMENDATIONS**  
These furring systems, when employed with normal steel joist construction and gypsum wallboard, constitute non-combustible construction and, in addition, fire resistance ratings are achieved as indicated on page 19.

**LIMITATIONS**  
Lighting and other fixtures shall be supported by framing do not use gypsum wallboard to support them. For large expanses of these ceiling systems with perimeter relief, control joints must be located a maximum of 50' o.c. in either direction without perimeter relief, 30' o.c. maximum in either direction.

**SUSPENDED**  
1. Install 1 1/2" channels 4' o.c. with No. 8 ga. hanger wire spaced a maximum of 4' o.c. along carrying channels. Attach Furring Channels spaced not more than 24" o.c. perpendicular to 1 1/2" C.R. Channels with double strand of saddle tied No. 16 ga. galvanized tie wire, or 1 1/2" Furring Channel Clips.  
2. Apply wallboard with its long dimension at right angles to the Furring Channels. Locate wallboard butt joints over the center of furring channels. Attach wallboard with 1" self-drilling drywall screws 12" o.c. in the field of the board 8" or 12" o.c. at butt joints, located not less than 3/8" or more than 1/2" from edges.

DRYWALL CEILING AND FRAMING DETAIL  
NOT TO SCALE

| Lighting Schedule: |                              |  |   |      |
|--------------------|------------------------------|--|---|------|
| TYPE               | MFG                          | ORDER CODE   | DESCRIPTION                                   | QUAN |
| A                  | Indy Lighting                | C6V-126/42T (Housing) w/C600-42-CL-WH (Trim) w/BB-28 28" C Channel Hanger bars F32TBX (32W CF 3500K)                             |   |      |
| B                  | Indy Lighting                | A6 (housing) w/P600-P38-CL-WH (Trim) w/BB-28 28" C Channel Hanger bars CMH123P38FL/ECO   | 23W SB MH Lamp                                |      |
| B1                 | Indy Lighting                | A6 (housing) w/P600-P38-CL-WH (Trim) w/BB-28 28" C Channel Hanger bars 60W HIR SP  |   |      |
| B2                 | Indy Lighting                | A6 (housing) w/P600-P38-CL-WH (Trim) w/BB-28 28" C Channel Hanger bars LED par 30 2700K  |   |      |
| C                  | Spectrum Lighting            | SPC0812CF-42-EX-8115SG-SM-MW F42TBX  | 1 x 42W 42W CF 3500K                          |      |
| D1                 | Con-Tech Lighting            | ODYSSEY Line Voltage Flexible Track System Heads: LIR2830 Finish S (Silver) Support from LIR879 S (Silver) Power feed: LIR 42788 | 50 Par 30 HIR SP                              |      |
| D                  | Con-Tech Lighting            | Same as above  | ?? - W Par 30 LED 3000K                       |      |
| E                  | Cooper Lighting/Metalux      | 48" Double strip Staggered SML-2-54T5-UNV-EBT  | F54T5 841 4100K                               |      |
| F                  | Cooper Lighting/Metalux      | 36" Double strip Staggered SML-2-39T5-UNV-EBT  | F39T5 841 4100K                               |      |
| G                  | Cooper Lighting/Metalux      | 24" Double strip Staggered SML-2-24T5-UNV-EBT  | F24T5 841 4100K                               |      |
| H                  | Cooper Lighting/Metalux      | 24" Double strip SM-2-24T5-UNV-EBT   | F24T5 841 4100K                               |      |
|                    | Encore Lighting              | 6ELPQ27 2 Emergency Light  |   |      |
| EL EX              | Encore Lighting              | EX 16 RC Edge lit Exit/EM Comp RC  |   |      |
|                    | Rolex Supplied Lighting      |  |   |      |
| H                  | Sconce                       | TBD  |   |      |
| T                  | Lighting in cases 127 to 131 | TBD  | Supplied and installed by Millwork Contractor |      |
| Chandler           | TBD                          | TBE  |   |      |
| F2                 | Amerlux Lighting             | AM6720 Cylindrix - 2 LT Trimless #Cylrtlx-2-20-mm-e-bt-120-cl-cl-sn (snoot)  | 2 Phillips CDM20/TM/830                       |      |
| F10                | Amerlux Lighting             | Amerlux #E2.9RATL-20-MM-120-CL + E2.9RATL-SDC Trimless   | Phillips CDM20/TM/830                         |      |



brian e. duffy  
associates  
65 falmouth road  
falmouth, me. 04105  
tel: 207-773-9500

RAD Construction Consultants Inc  
184 S. Livingston Ave.  
Suite 9-334  
Livingston, NJ 07039  
973-992-3435  
973-740-9428(F)  
rdykman@radcci.com  
www.radcci.com

RENOVATIONS TO:  
**SPRINGER'S JEWELERS**  
580 CONGRESS STREET  
PORTLAND, MAINE

date: APRIL 27, 2012  
drawn by: RAD  
scale: 1/4" = 1' - 0"  
sheet title:

**REFLECTED CEILING PLAN**

sheet:

**A3**