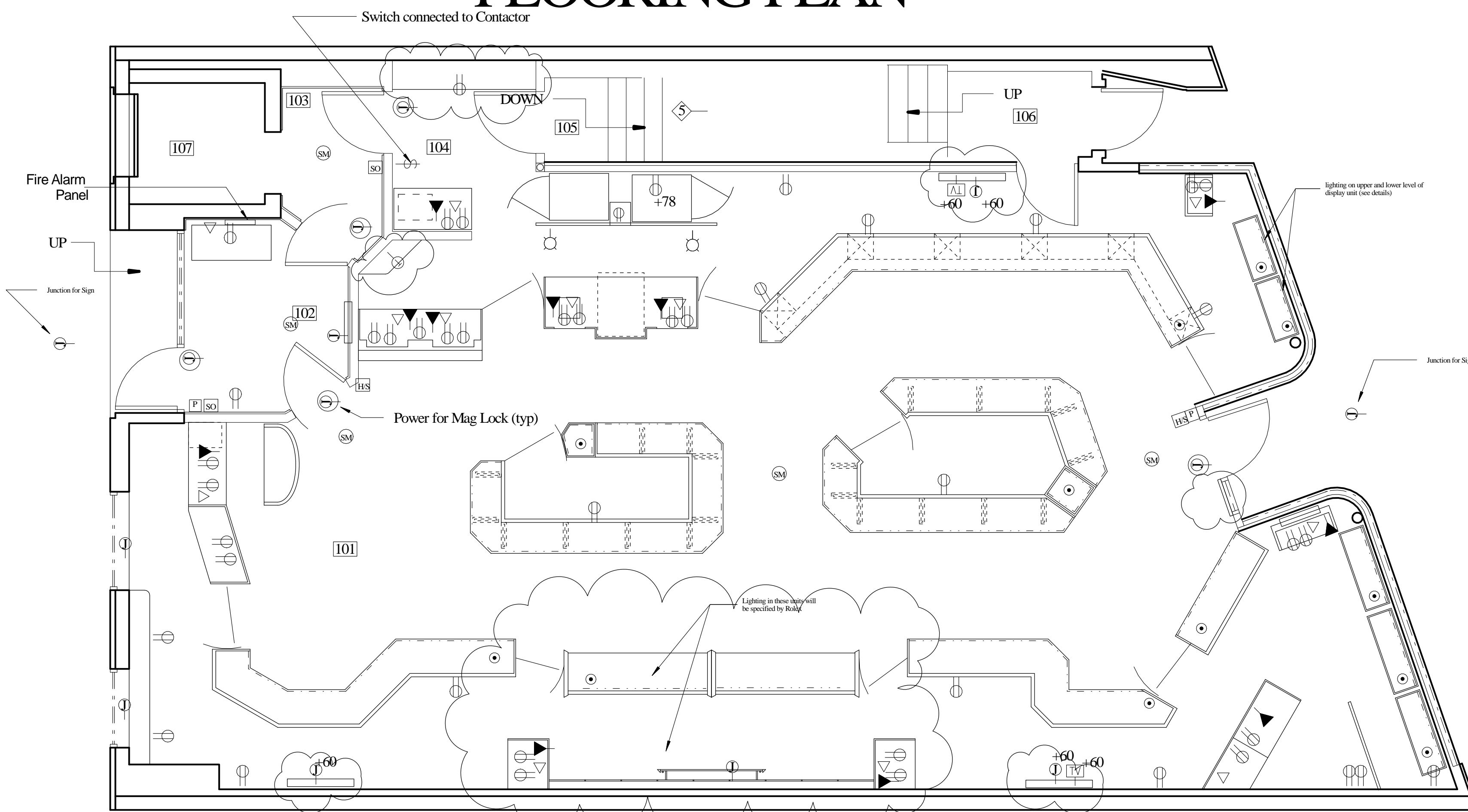


# FLOORING PLAN

FINISH SCHEDULE:					
Room #	Description	Walls	Floor	Base	Ceiling
101	Sales Area	PI/WP	CI	C2	PI
102	ENTRANCE VESTIBULE (FREE ST)	WD/PI	TI	C2	PI
103	ELEVATOR VESTIBULE	WD/PI	TI	C2	PI
104	WRAP AREA	PI	CI	C2	ACT-1
105	STAIRS TO BASEMENT	PI	CI	C2	PI
106	STAIRS TO 2ND FLOOR	P(ME)	ETR	ETR	P(ME)
107	ELEVATOR	NIC	NIC	NIC	NIC

Legend:

ACT = Acoustical Ceiling Tiles  
 C = Carpet  
 CP = Concrete Paint  
 CT = Ceramic Tile  
 ETR = Existing to Remain  
 NF = No Finish  
 P = Paint; E = Eggshell F = Flat SG = Semi Gloss G = Gloss  
 P(ME) = Paint to match existing  
 PL = Plastic Laminate  
 PWB = Painted Wood Base  
 TI = Granite 12 x 12 x 3/8 tiles  
 VB = Vinyl Base  
 WD = Wood Veneer  
 WF = Wood Finish  
 WP = Wall Paper



# POWER PLAN

- ① Existing wall to be furred out w/ 2-1/2" x 24 Ga. Metal Studs 16" O.C. and than 5/8" Type "X" Fire Code Drywall
- ② New 3-5/8" x 20 Ga Metal Stud Partition Studs to be 16" O.C clad each side w/ 1 Layer 5/8" Type X FC Drywall
- ③ New 3-5/8" x 16 Ga Metal Stud Partition Studs to be 16" O.C clad each side w/ 2 Layer 5/8" Type X FC Drywall
- ④ Furr out existing S/F Wall w/ 2-5/8" x 24 Ga Metal Stud Studs to be 16" O.C clad exposed face w/ 1 Layer 5/8" Type X FC Drywall. Install R-11 insulation prior to closing wall
- ⑤ Clad underside of the existing stairwell to the basement w/ 2 Layer 5/8" Type X Fire Code Drywall

## FIRE ALARM NOTES:

- SM Ceiling Mid Smoke Detector
- HS Horn/Strobe
- P Pull Station
- SO Strobe Only

All Fire Alarm Devices will be hardwired back to a central alarm panel that is to be Monitored by LLS Local Alarm Contractor.

Exact heights and locations of Fire Alarm Devices will be determined by the Local Fire Alarm Contractor and will adhere to all Fire Codes

## ELECTRICAL LEGEND

HOMERUN TO PANEL AS NOTED. ARROWHEADS DENOTE THE NUMBER OF CIRCUITS. NUMBERS INDICATE CIRCUIT NUMBERS (NUMBERS IN BRACKETS DENOTE 2 OR 3 POLE CIRCUITS). HASHMARKS DENOTE THE NUMBER OF WIRES WHEN MORE THAN TWO #12 AWG, UNLESS OTHERWISE NOTED.  
 WIRING RUN IN WALLS OR ABOVE THE CEILING.  
 WIRING RUN BELOW THE FINISHED FLOOR.  
 LOW VOLTAGE WIRING.  
 CONDUIT TURNED UP, CONDUIT TURNED DOWN.  
 FLOURESCENT LIGHTING FIXTURES, CEILING MOUNTED. CAPITAL LETTER DENOTES TYPE LOWER CASE LETTERS INDICATES SWITCH CONTROL.  
 FLOURESCENT LIGHT MOUNTED IN SHOWCASE OR FOR BACKLIT SIGN LIGHT.  
 INCANDESCENT LIGHTING FIXTURE, CEILING MOUNTED. SEE ARCHITECTURAL PLANS FOR SPECIFICATIONS AND THE EXACT LOCATION.  
 WALL MOUNTED EXIT LIGHT, SELF-CONTAINED BATTERY PACK.  
 EMERGENCY BATTERY UNIT.  
 REMOTE EMERGENCY LIGHT.  
 TOGGLE SWITCH, 20 AMP, 125 VOLT, SINGLE-POLE, MOUNTED 30" AFF.  
 THREE-WAY SWITCH.  
 4-WAY OPERATED RECESSED GRILLE CONTROL SWITCH.  
 DUPLEX RECEPTACLE, GROUNDING TYPE, 20 AMP, 125 VOLT, MOUNTED 15" AFF OR AS NOTED.  
 DUPLEX RECEPTACLE WITH ISOLATED GROUND TERMINAL FOR CASH REGISTER.  
 DUPLEX RECEPTACLE WITH GROUND FAULT INTERRUPTER.  
 JUNCTION BOX (WALL, CEILING, FLOOR) MOUNTED.  
 TELEPHONE WALL OUTLET BOX WITH MODULAR JACK AND 1/2" CONDUIT STUBBED-UP ABOVE THE FINISH CEILING.  
 TELEPHONE FLOOR OUTLET MOUNTED ON CONDUIT STUB-UP.  
 MOTOR, NUMBER INDICATES HORSEPOWER (P=FRACATIONAL).  
 SAFETY DISCONNECT SWITCH (FUSED, UNFUSED).  
 LIGHTING PANEL.  
 REMOTE BALLAST IN DISPLAY CASE.  
 CEILING MOUNTED SPEAKER.  
 AMPLIFIER.  
 LOW VOLTAGE TRANSFORMER.  
 LOW VOLTAGE PUSHBUTTON.  
 LOW VOLTAGE BUZZER.  
 ABOVE FINISHED FLOOR.  
 LIGHTING PANEL.  
 CIRCUIT BREAKER.  
 CONDUIT.  
 WEATHERPROOF.  
 EMPTY CONDUIT.  
 HANDBRIGHT.  
 TIME CLOCK.  
 FIXTURE ON NIGHT LIGHT CIRCUIT.  
 Telephone  
 Data  
 Floor Outlet  
 All outlets will be mounted @ 18" AFF unless a height is specified

brian e. duffy  
associates

65 falmouth road  
falmouth, me. 04105  
tel: 207-773-9500

RAD Construction Consultants Inc  
184 S. Livingston Ave.  
Suite 9-334  
Livingston, NJ 07039

973-992-3435  
973-740-9426(F)

rdykman@radcci.com  
www.radcci.com

RENOVATIONS TO:  
**SPRINGER'S  
JEWELERS**  
580 CONGRESS STREET  
PORTLAND, MAINE

date: APRIL 27, 2012

drawn by: RAD

scale: 1/4" = 1'-0"

sheet title:  
**POWER PLAN**

sheet:

**A2**