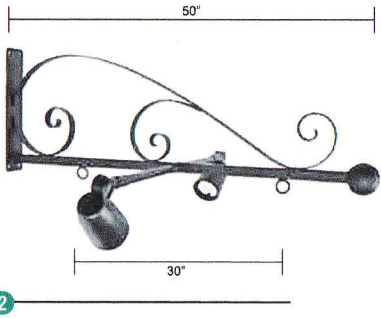


30" DIA D-F BLADE SIGN - EXTERNALLY ILLUMINATED

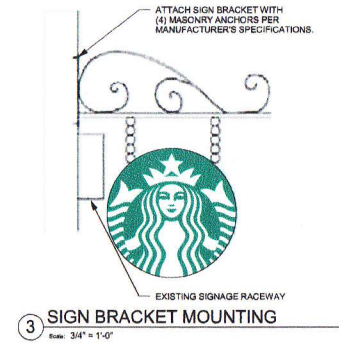
QTY: 2



1 Front View



2

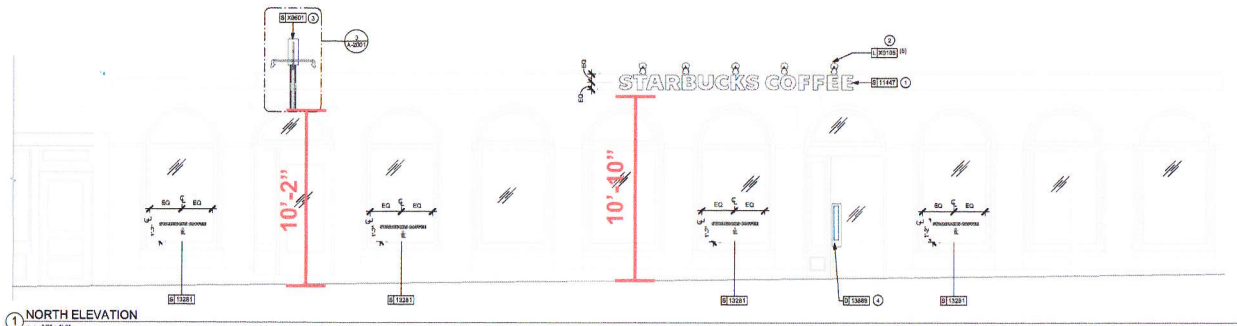


3 SIGN BRACKET MOUNTING
Note: 3/4" = 1'-0"

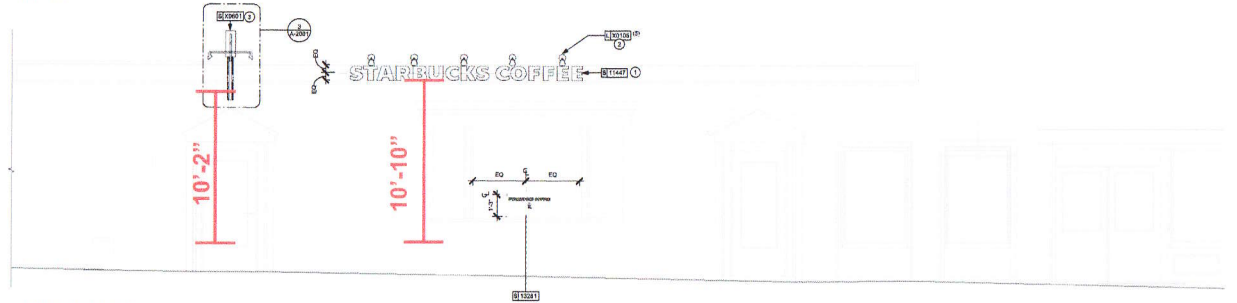
A SIGN LOGO
FABRICATED FROM ALUMINUM AND PAINTED PMS 3525 GREEN WITH OPAQUE WHITE VINYL APPLIED 1ST SURFACE. 4" THICK.

B NONILLUMINATED BLADE SIGN WITH INTEGRATED GOOSENECK LIGHTING.
MFR: SIGN BRACKET STORE, 50" TORINO ILLUMINATA SIGN BRACKET KIT. CODE: 370B-WL-30-LKIT WITH GOOSENECK 7" SHADE.
WWW.SIGNBRACKETSTORE.COM
1-888-919-7446

ROAD FRONT 80' BOTH SIDES



1 NORTH ELEVATION
Scale: 3/8" = 1'-0"



2 SOUTH ELEVATION
Scale: 3/8" = 1'-0"

THIS DESIGN IS THE ORIGINAL AND UNPUBLISHED WORK OF HILTON DISPLAYS AND MAY NOT BE REPRODUCED, COPIED, OR EXHIBITED IN ANY FASHION WITHOUT WRITTEN CONSENT FROM AN AUTHORIZED OFFICER OF THE COMPANY. © HILTON DISPLAYS 2013

HILTON DISPLAYS

123 HILLSIDE DRIVE - GREENVILLE SC 29607
P 803 353 9132 - F 864 242 2204
www.hiltondisplays.com

QID 13-22920

JOB NAME:

Starbucks #7204

LOCATION:

594 Congress St.
Portland, ME

CUSTOMER CONTACT:

Susan Arnold

SALESMAN / PM

Bryan Langley

DESIGNER:

Jesse Black

DWG. DATE:

01-16-14

REV. DATES:

2-18-14 BS

2-20-14 MR

SCALE:

Not To Scale

FILE:

2013/Starbucks/
Portland, ME/13-22920
/SB 7204 Portland, ME

DESIGN SPECIFICATIONS ACCEPTED BY:

EST:	CLIENT:
SLS/PM:	LANDLORD:

THE INTENT OF THIS DRAWING IS TO SHOW A CONCEPTUAL REPRESENTATION OF THE PROPOSED SIGNAGE. DUE TO VARIATIONS IN PRINTING DEVICES AND SUBSTRATES, THE FINISHED PRODUCT MAY DIFFER SLIGHTLY FROM DRAWING.

Underwriters Laboratories Inc. DRY DAMP WET