

N:\Starbucks\Starbucks Northeast\ME\STRN0127_7433_Hay Building_ME\Implementation\Revit\7433 Hay Building ME_OTP.rvt

1/12/2013 5:39:27 PM

DOOR SCHEDULE - "D"										
DESIGN ID	COUNT	DESCRIPTION	Type	Construction Type	Finish	Hardware Group	Frame Type	Frame Material	RESP.	COMMENTS
DOOR										
13688	1	DOOR - STOREFRONT RESERVE PULL NARROW FRAME SINGLE	Standard	NA	MT0011	NA	NA	NA	VD	BFC Architectural Metals, Inc. Contact www.bfcmetals.com. Finish: MT0011. Refer to Exterior Elevations for location and tag.

EXTERIOR LIGHTING FIXTURE SCHEDULE - "L"					
DESIGN ID	COUNT	DESCRIPTION	RESP.	BULB	COMMENTS
SCENCE					
X0105	10	EXTERIOR SCENCE - GOOSENECK	GC	LEDE PAR 30S 10-19W FLOOD	MFR: SIGN BRACKET STORE. GOOSENECK LIGHT ALUMINUM - 37.5" W ARM WITH 7IN ANGLE SHADE. CODE: SL-AD12-ANG807. WWW.SIGNBRACKETSTORE.COM 1-888-919-7446

SIGNAGE SCHEDULE - "S"				
DESIGN ID	COUNT	DESCRIPTION	RESP.	COMMENTS
SIGNAGE - DISK				
X0601	2	SIGN - DISK BLADE DF NON ILLUMINATED WITH BRACKET WALL MOUNTED EVOLVED - 30IN 760MM	VD	NONILLUMINATED BLADE SIGN WITH INTEGRATED GOOSENECK LIGHTING. MFR: SIGN BRACKET STORE. 50" TORINO ILLUMINATA SIGN BRACKET KIT. CODE: 3708-WL-30-LKIT WITH GOOSENECK 7" SHADE. WWW.SIGNBRACKETSTORE.COM 1-888-919-7446 FOR DESIGN INTENT ONLY. SHOP DRAWINGS TO BE APPROVED BY STARBUCKS DESIGN MANAGER PRIOR TO FABRICATION.
SIGNAGE - OTHER				
13281	5	RESERVE WINDOW GRAPHIC - 27IN 685MM	VD	WHITE VINYL LETTERS
SIGNAGE - WORDMARK				
11447	2	SIGN - INLINE NONILLUMINATED - 10IN 255MM	VD	WHITE LETTERS

SHEET NOTES

- INSTALL NEW INLINE WORDMARK AT LOCATION OF REMOVED. VERIFY FINAL LOCATION IN FIELD.
- INSTALL NEW EXTERIOR SCENCES AT LOCATION OF REMOVED. VERIFY FINAL LOCATION IN FIELD.
- INSTALL NEW LOGO DISK WITH INTEGRATED LIGHTING AT LOCATION OF REMOVED. VERIFY FINAL LOCATION AND SIZE IN FIELD.
- INSTALL NEW DOOR HARDWARE AT LOCATION OF REMOVED. REFER TO FLOOR PLAN FOR FURTHER INFORMATION.

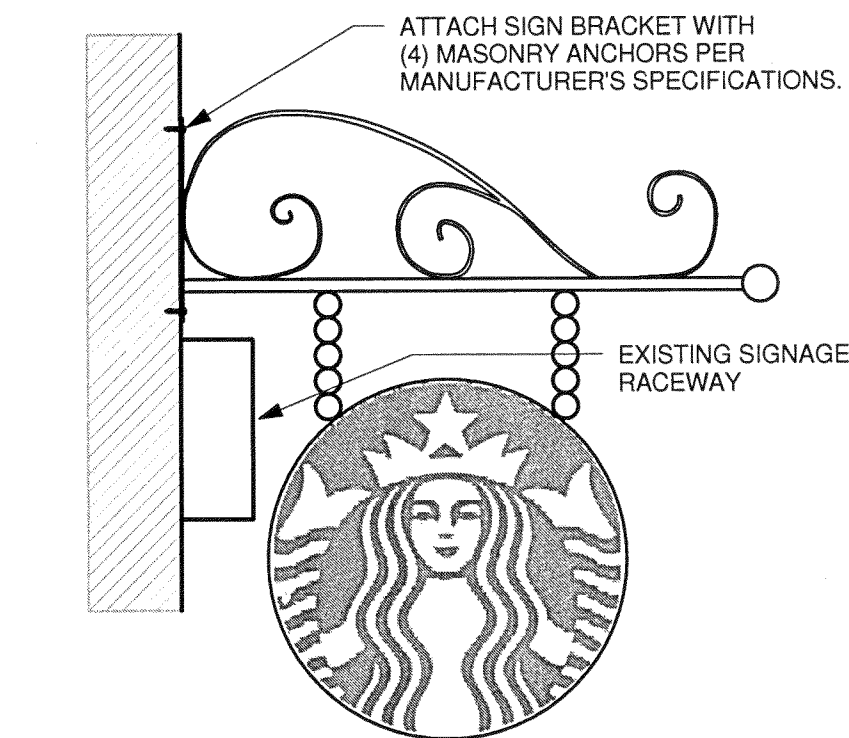
EXTERIOR ELEVATION NOTES

- A. GENERAL CONTRACTOR TO COORDINATE AND SCHEDULE SIGNAGE INSTALLATION WITH THE SIGNAGE CONTRACTOR PROVIDING A MINIMUM SCHEDULING NOTICE OF 4 WEEKS AND 1 WEEK PRIOR TO SCHEDULED DATE OF INSTALLATION. STARBUCKS CONSTRUCTION MANAGER TO PROVIDE GENERAL CONTRACTOR WITH SIGNAGE CONTRACTOR CONTACT INFORMATION.
- B. GENERAL CONTRACTOR SHALL COORDINATE WITH ELECTRICAL CONTRACTOR TO FURNISH AND INSTALL ELECTRICAL CIRCUITS INCLUDING ALL CONDUIT, WIRE, CONNECTIONS, AND BREAKER AT PANEL BOARD NECESSARY TO SERVE SIGNAGE.
- C. GENERAL CONTRACTOR TO PROVIDE FIRE TREATED WOOD STUD BLOCKING, OR EQUIVALENT TO SUPPORT SIGNAGE.
- D. SIGNAGE CONTRACTOR SHALL VERIFY SIZE AND LOCATION OF ANY AND ALL ALLOWABLE MONUMENT OR POLE SIGNAGE WITH LANDLORD AND PROVIDE SHOP DRAWING(S) PRIOR TO FABRICATION TO STARBUCKS DESIGNER FOR APPROVAL.
- E. SIGNAGE CONTRACTOR TO INSTALL SIGNAGE IN COMPLIANCE WITH LOCAL CODES AND OBTAIN PERMIT AND LANDLORD APPROVAL.
- F. SIGNAGE CONTRACTOR TO SUPPLY SHOP DRAWINGS TO STARBUCKS CONSTRUCTION MANAGER AND TO THE GENERAL CONTRACTOR AS NEEDED. GENERAL CONTRACTOR TO NOTIFY STARBUCKS CONSTRUCTION MANAGER IMMEDIATELY IF SHOP DRAWINGS OR INSTALLATION IS IN DISCREPANCY WITH STARBUCKS ARCHITECTURAL DRAWINGS.
- G. GENERAL CONTRACTOR TO CLEAN, PATCH AND REPAIR EXISTING EXTERIOR AS REQUIRED.

RESPONSIBILITY LEGEND

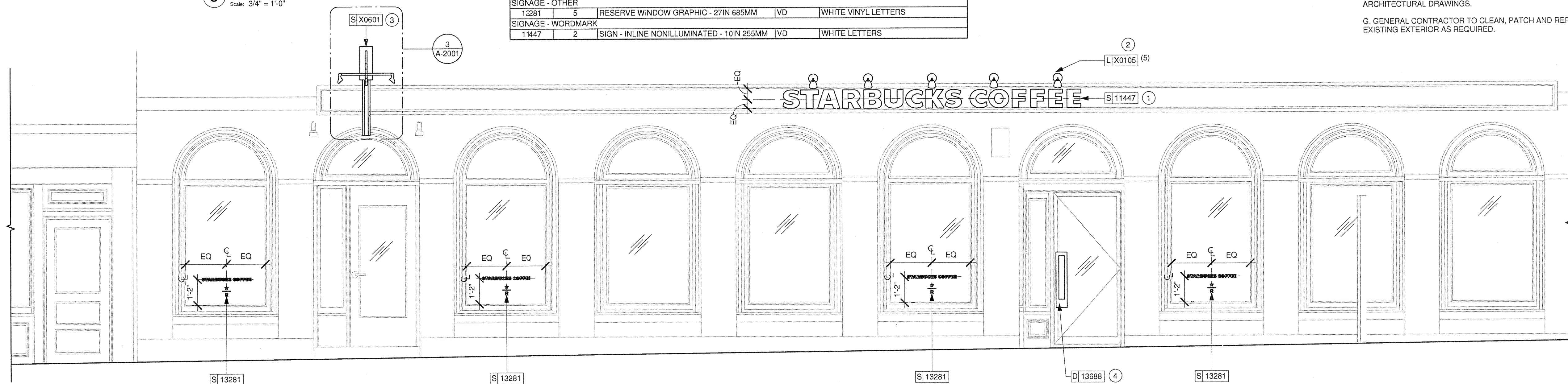
- GC PROVIDED BY GENERAL CONTRACTOR
 LL PROVIDED BY LANDLORD
 VD PROVIDED BY VENDOR DIRECT
 WH PROVIDED BY STARBUCKS

NOTE: ALL RESPONSIBILITIES TO BE CONFIRMED WITH STARBUCKS DESIGN MANAGER PRIOR TO ORDERING/CONSTRUCTION.



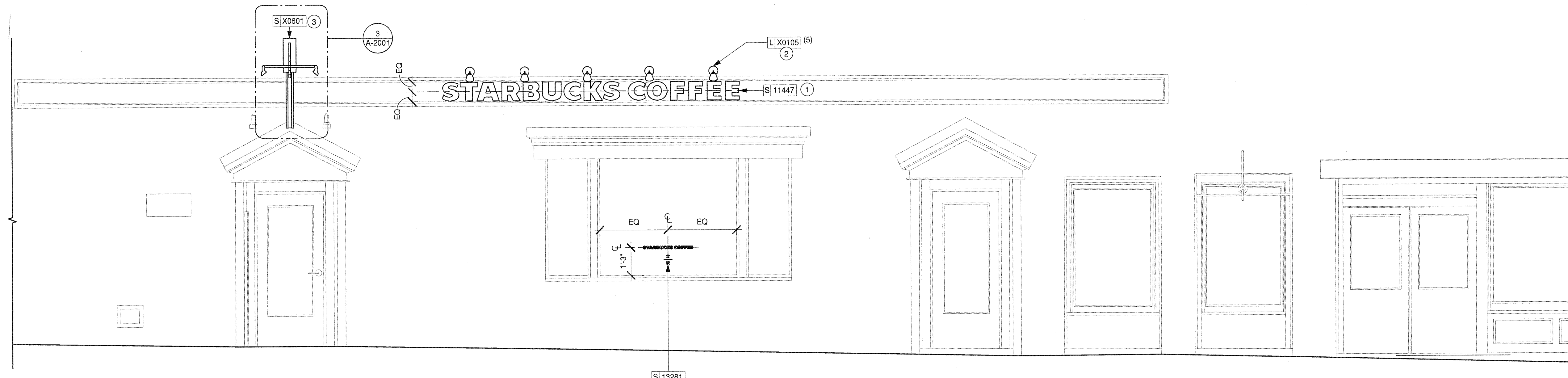
3 SIGN BRACKET MOUNTING

Scale: 3/4" = 1'-0"



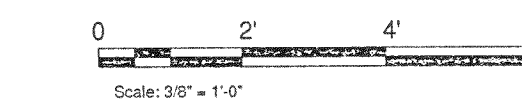
1 NORTH ELEVATION

Scale: 3/8" = 1'-0"



2 SOUTH ELEVATION

Scale: 3/8" = 1'-0"



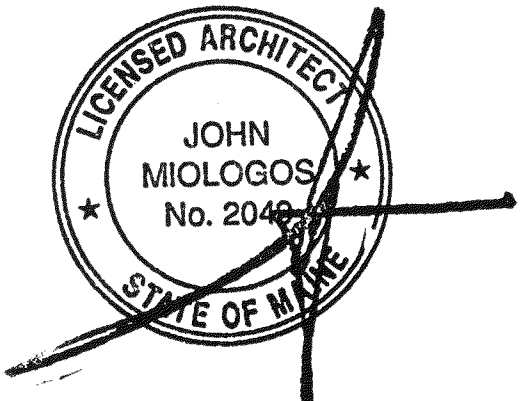
FULL REMODEL



STARBUCKS COFFEE COMPANY
 2401 UTAH AVENUE SOUTH
 SEATTLE, WASHINGTON 98134
 (206) 318-1575

THESE DRAWINGS AND SPECIFICATIONS ARE CONFIDENTIAL AND SHALL REMAIN THE SOLE PROPERTY OF STARBUCKS CORPORATION, WHICH IS THE OWNER OF THE COPYRIGHT IN THIS WORK. THEY SHALL NOT BE REPRODUCED (IN WHOLE OR IN PART), SHARED WITH THIRD PARTIES OR USED IN ANY MANNER ON OTHER PROJECTS OR EXTENSIONS TO THIS PROJECT WITHOUT THE PRIOR WRITTEN CONSENT OF STARBUCKS CORPORATION.

Revision Schedule				
Rev	Date	By	Description	



JAN 15 2014

PROJECT NAME: HAY BUILDING
PROJECT ADDRESS: 594 CONGRESS STREET
 PORTLAND, ME 04101
COUNTY: CUMBERLAND

STORE #: 7433
PROJECT #: 04704-026
CONCEPT: NCS
PALETTE: REGIONAL MODERN
ISSUE DATE: 12-16-2013
DESIGN MANAGER: ETA KLIGER
LEED@ AP: N/A
PRODUCTION DESIGNER: J.NEAL
CHECKED BY: T. REISING

SHEET TITLE:
EXTERIOR ELEVATIONS

SCALE: As indicated

SHEET NUMBER:
 A-2001