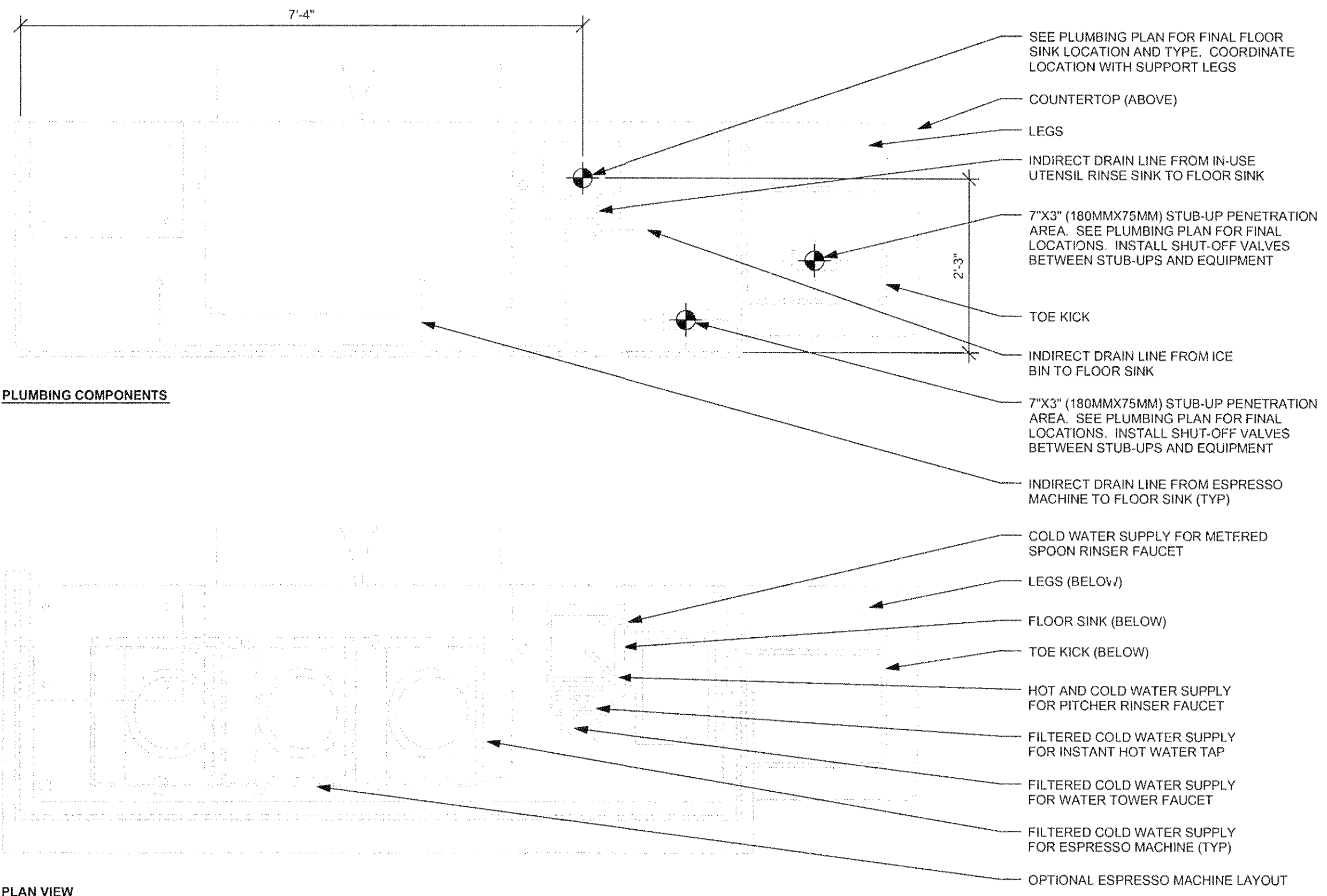
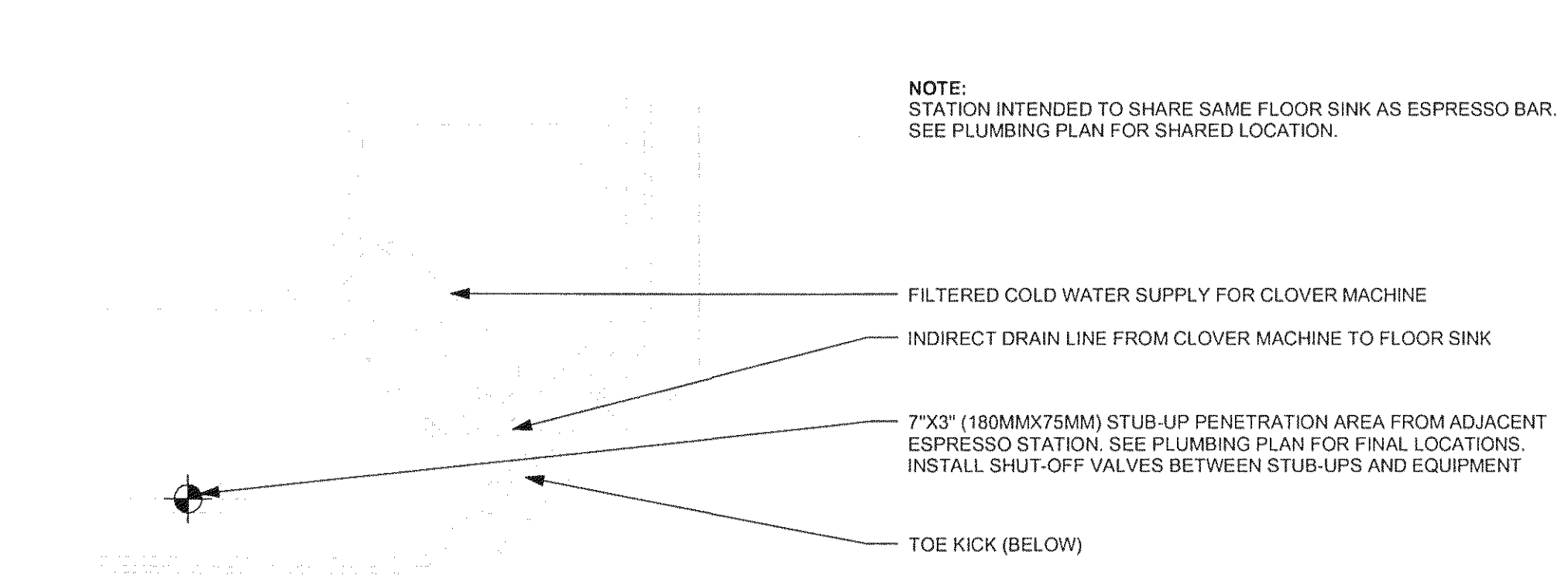


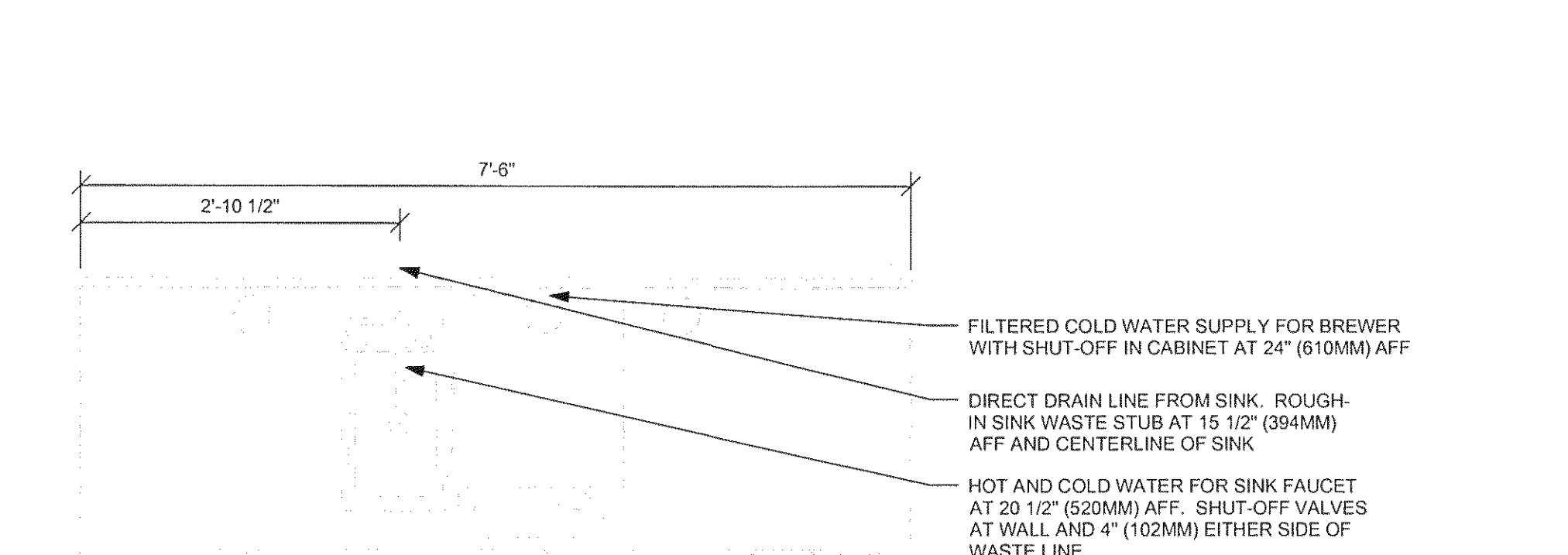
N:\Starbucks\Starbucks Northeast\ME\STRNM0127_7433_Hay Building_ME.rvt
 11/22/2013 1:43:01 PM



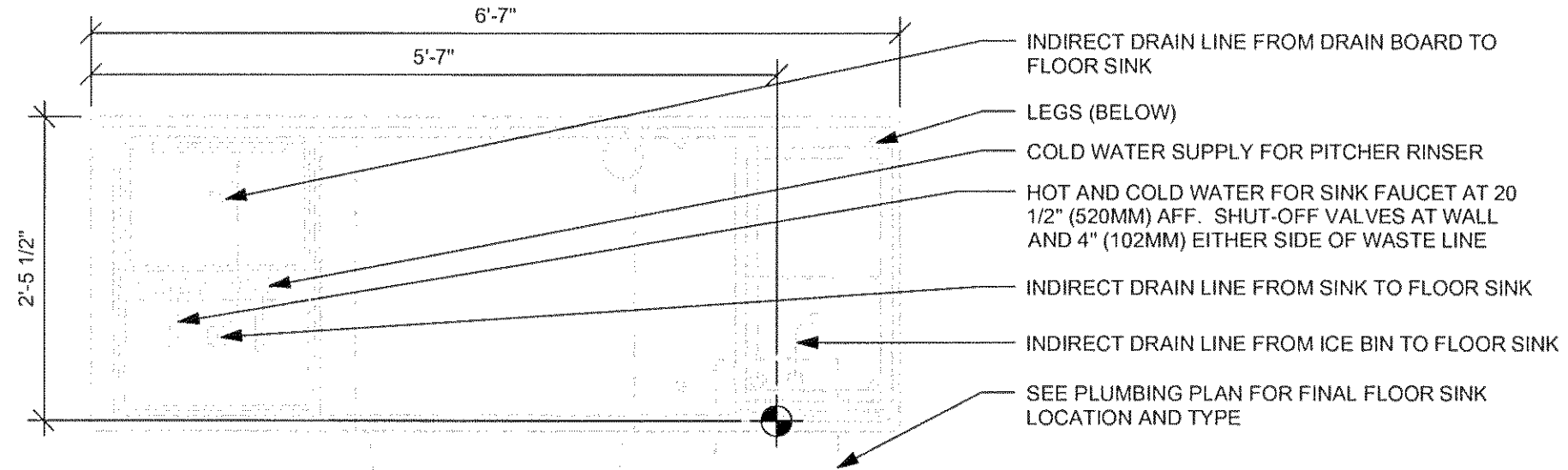
1 ESPRESSO 26 - PLUMBING
 Scale: 3/4" = 1'-0"



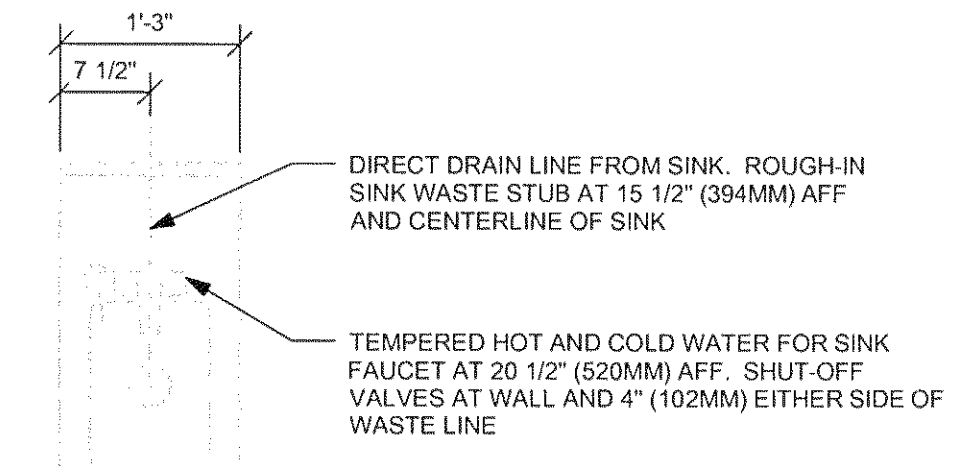
2 RESERVE 02 - PLUMBING
 Scale: 3/4" = 1'-0"



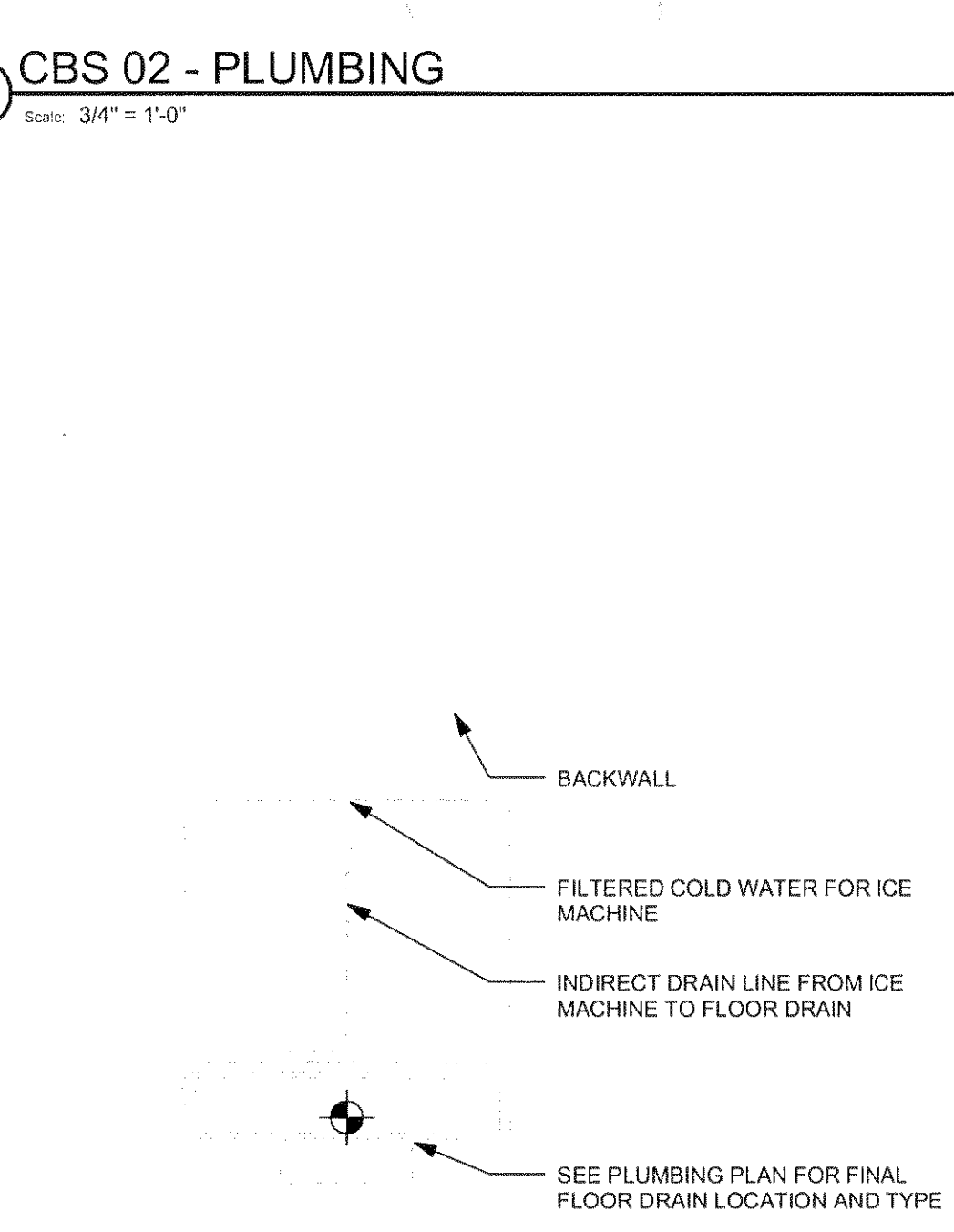
3 BREW 04 - PLUMBING
 Scale: 3/4" = 1'-0"



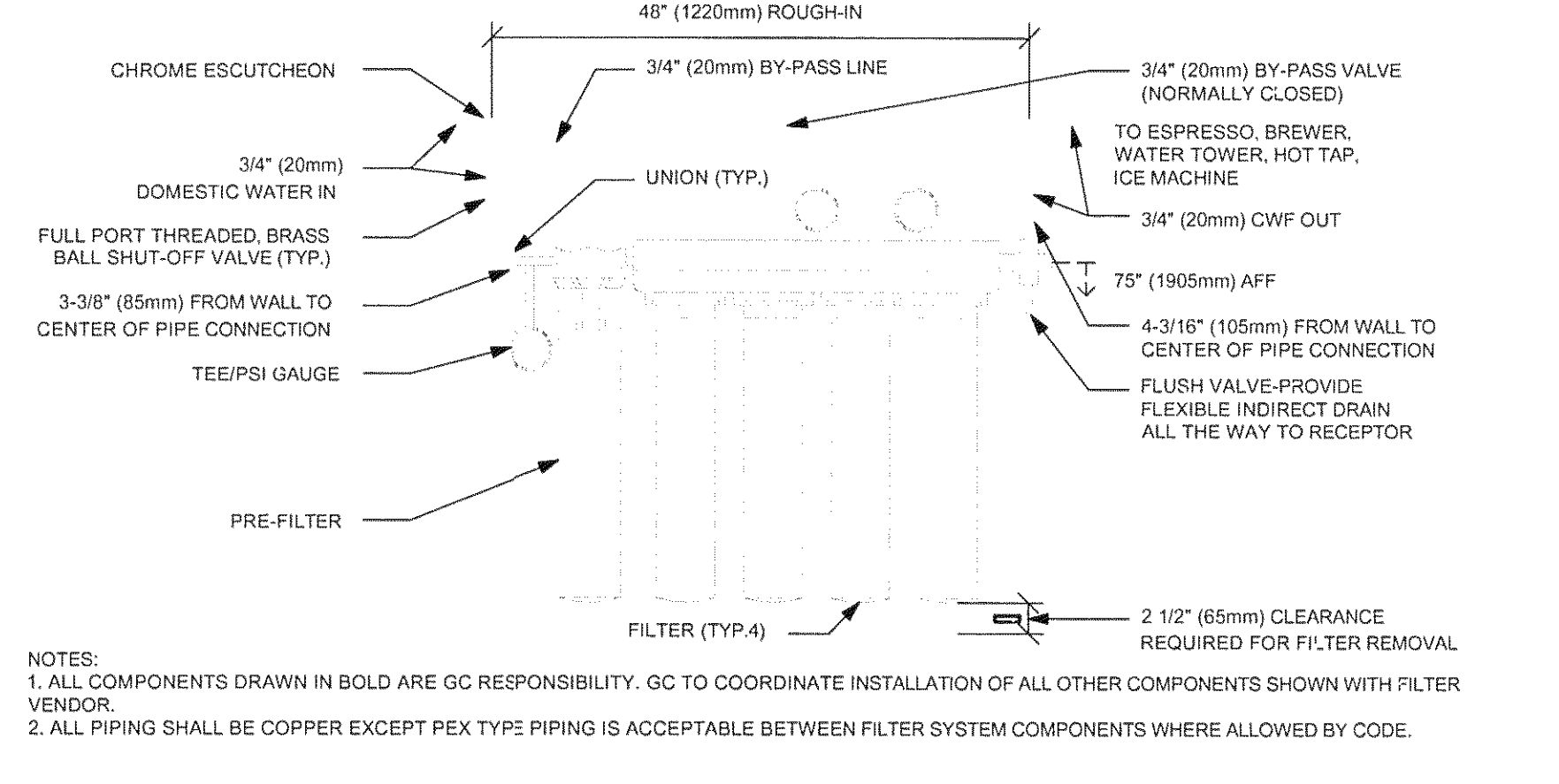
5 CBS 02 - PLUMBING
 Scale: 3/4" = 1'-0"



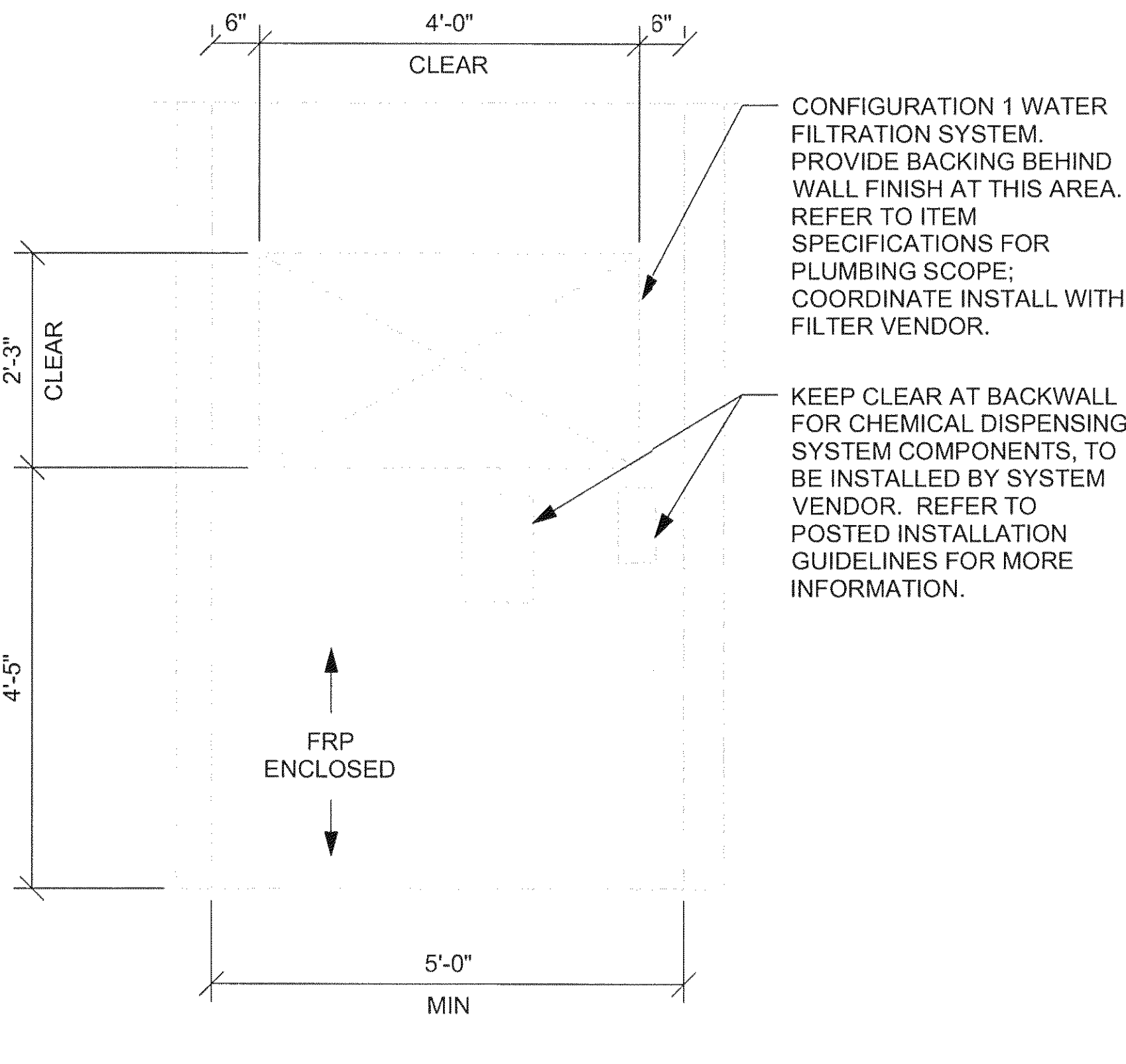
4 ADD 01 - PLUMBING
 Scale: 3/4" = 1'-0"



6 ICE MACHINE - PLUMBING
 Scale: 3/4" = 1'-0"



7 FILTRATION - GENERIC CONFIGURATION 1
 Scale: 1/2" = 1'-0"



8 FILTRATION - GENERIC CONFIGURATION 1
 Scale: As indicated

NOTE:
 STATION INTENDED TO SHARE SAME FLOOR SINK AS ESPRESSO BAR.
 SEE PLUMBING PLAN FOR SHARED LOCATION.



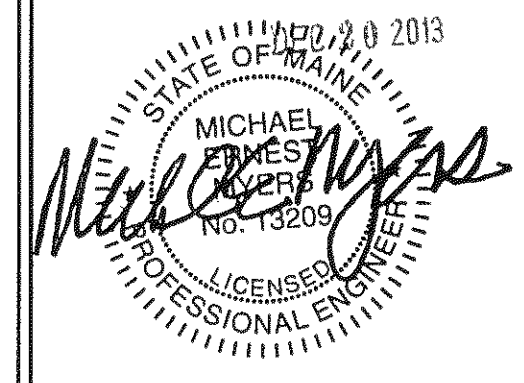
STARBUCKS COFFEE COMPANY
 2401 UTAH AVENUE SOUTH
 SEATTLE, WASHINGTON 98134
 (206) 318-1575

THESE DRAWINGS AND SPECIFICATIONS ARE CONFIDENTIAL AND SHALL REMAIN THE SOLE PROPERTY OF STARBUCKS CORPORATION, WHICH IS THE OWNER OF THE COPYRIGHT IN THIS WORK. THEY SHALL NOT BE REPRODUCED (IN WHOLE OR IN PART), SHARED WITH THIRD PARTIES OR USED IN ANY MANNER ON OTHER PROJECTS OR EXTENSIONS TO THIS PROJECT WITHOUT THE PRIOR WRITTEN CONSENT OF STARBUCKS CORPORATION.

ENGINEER OF RECORD

Revision Schedule

Rev	Date	By	Description



FULL REMODEL

PROJECT NAME:
HAY BUILDING
 PROJECT ADDRESS:
 594 CONGRESS STREET
 PORTLAND, ME 04101

STORE #:	7433
PROJECT #:	04704-026
CONCEPT:	NCS
PALETTE:	REGIONAL MODERN
ISSUE DATE:	12-16-2013
DESIGN MANAGER:	ETA KLIGER
LEED® AP:	N/A
PRODUCTION DESIGNER:	AMIT T.
CHECKED BY:	KARI ENGEN

SHEET TITLE:
PLUMBING DETAILS

SCALE: As indicated

SHEET NUMBER:
P-5001