

N:\Starbucks\Starbucks Northeast\ME\STRNM0127_7433_Hay Building, ME.05_Implementation\Revit\7433 Hay Building_ME_OTP.rvt 12/17/2013 5:44:08 PM

NOTE: FINAL SHOP DRAWINGS TO BE APPROVED BY STARBUCKS DESIGN MANAGER PRIOR TO FABRICATION



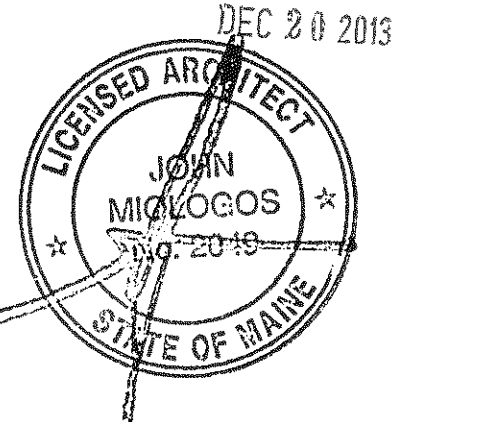
©2011 STARBUCKS COFFEE COMPANY

STARBUCKS COFFEE COMPANY
 2401 UTAH AVENUE SOUTH
 SEATTLE, WASHINGTON 98134
 (206) 318-1575

THESE DRAWINGS AND SPECIFICATIONS ARE CONFIDENTIAL AND SHALL REMAIN THE SOLE PROPERTY OF STARBUCKS CORPORATION, WHICH IS THE OWNER OF THE COPYRIGHT IN THIS WORK. THEY SHALL NOT BE REPRODUCED (IN WHOLE OR IN PART), SHARED WITH THIRD PARTIES OR USED IN ANY MANNER ON OTHER PROJECTS OR EXTENSIONS TO THIS PROJECT WITHOUT THE PRIOR WRITTEN CONSENT OF STARBUCKS CORPORATION.

FULL REMODEL

Revision Schedule			
Rev	Date	By	Description



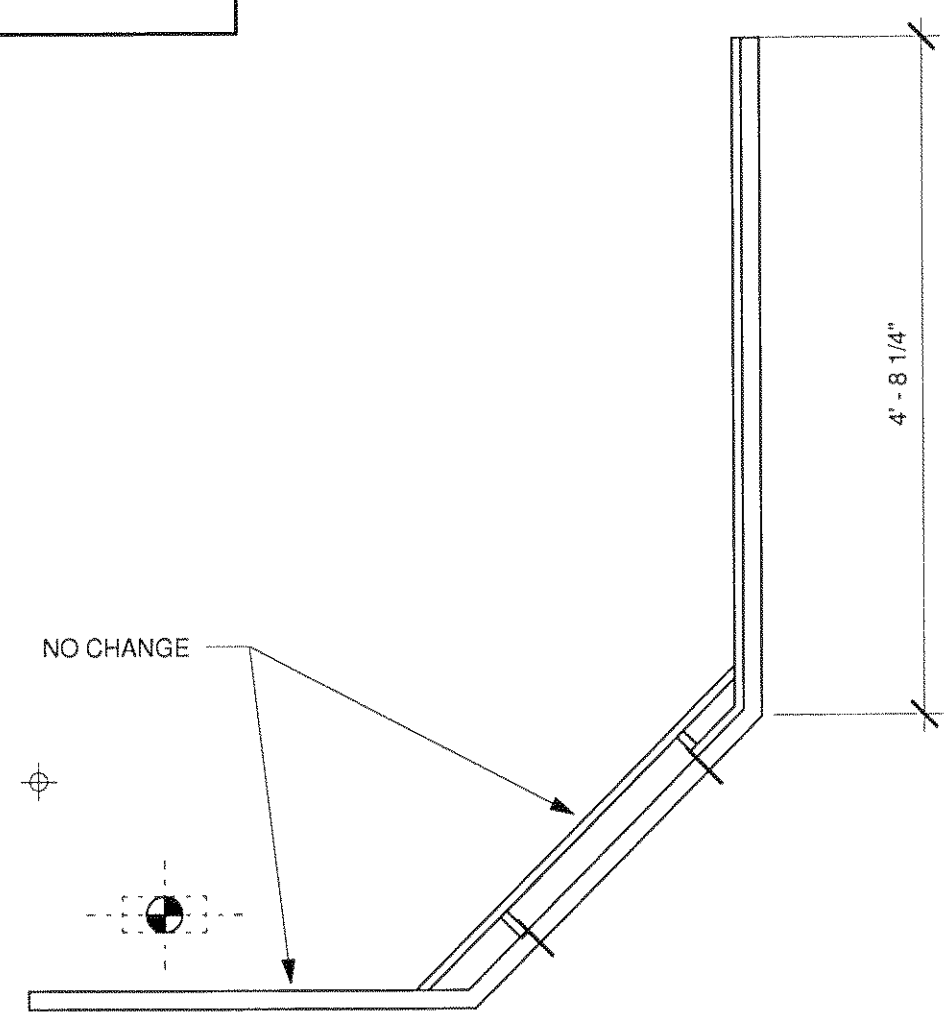
PROJECT NAME:
HAY BUILDING
 PROJECT ADDRESS:
 594 CONGRESS STREET
 PORTLAND, ME 04101
 COUNTY: CUMBERLAND

STORE #: 7433
 PROJECT #: 04704-026
 CONCEPT: NCS
 PALETTE: REGIONAL MODERN
 ISSUE DATE: 12-16-2013
 DESIGN MANAGER: ETA KLIGER
 LEED AP: N/A
 PRODUCTION DESIGNER: J. NEAL
 CHECKED BY: T. REISING

SHEET TITLE:
DESIGN DETAILS

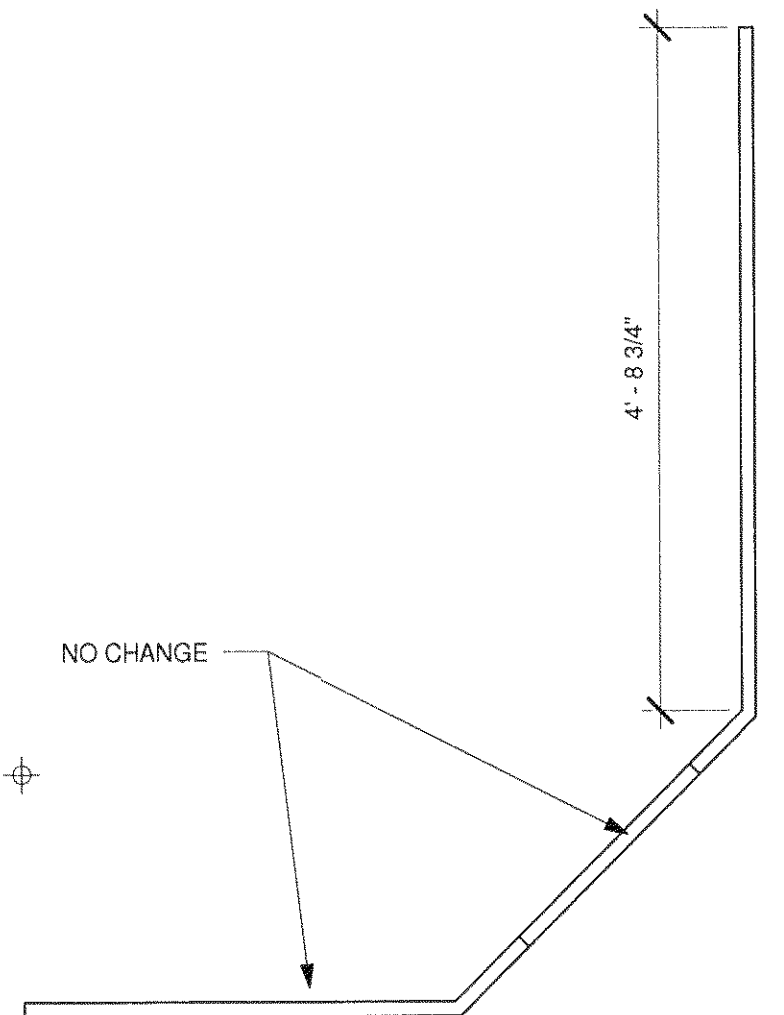
SCALE: 3/4" = 1'-0"

SHEET NUMBER:
I-5003



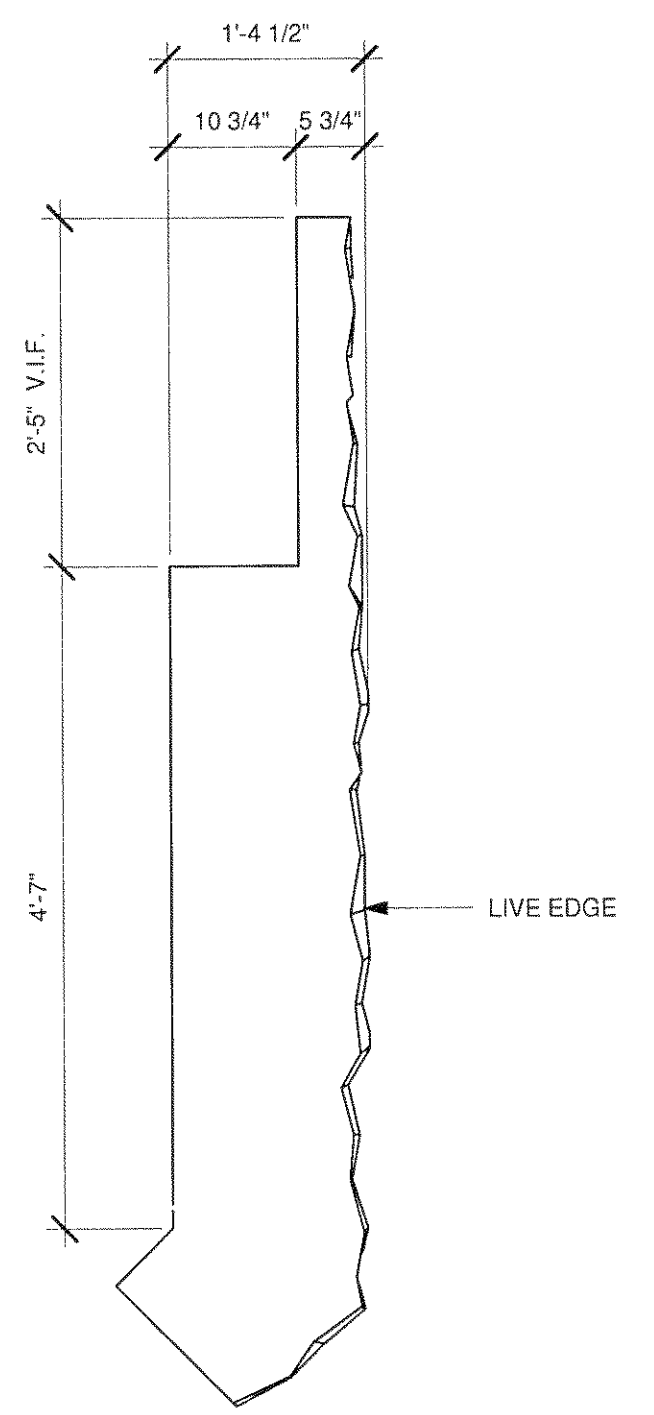
NOTE: MODIFIED BASED ON DID 12528. DETAIL MODIFIED FOR DIMENSIONS ONLY. VERIFY FINAL DIMENSION IN FIELD.

1 X0305 RESERVE DIEWALL
 Scale: 3/4" = 1'-0"



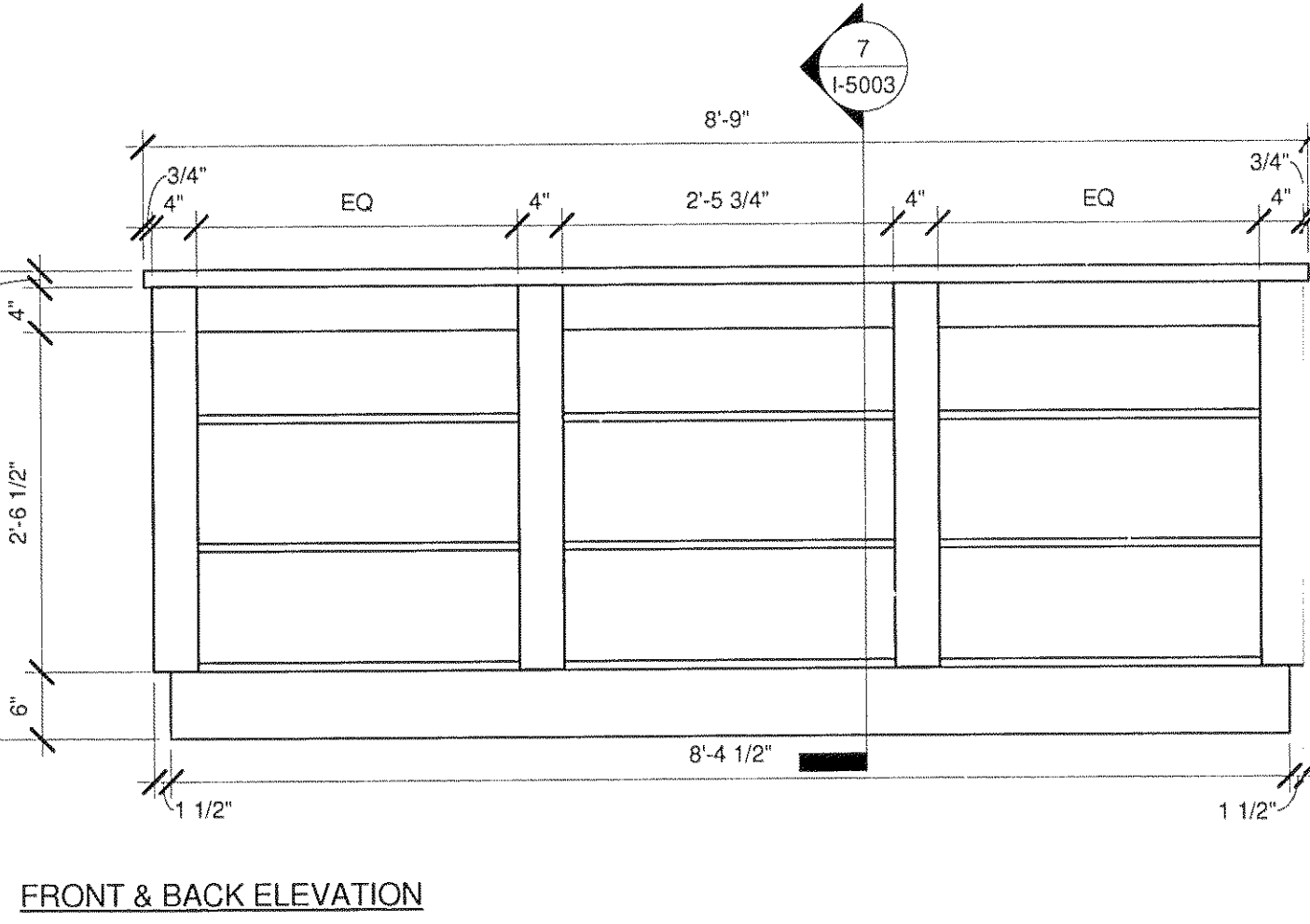
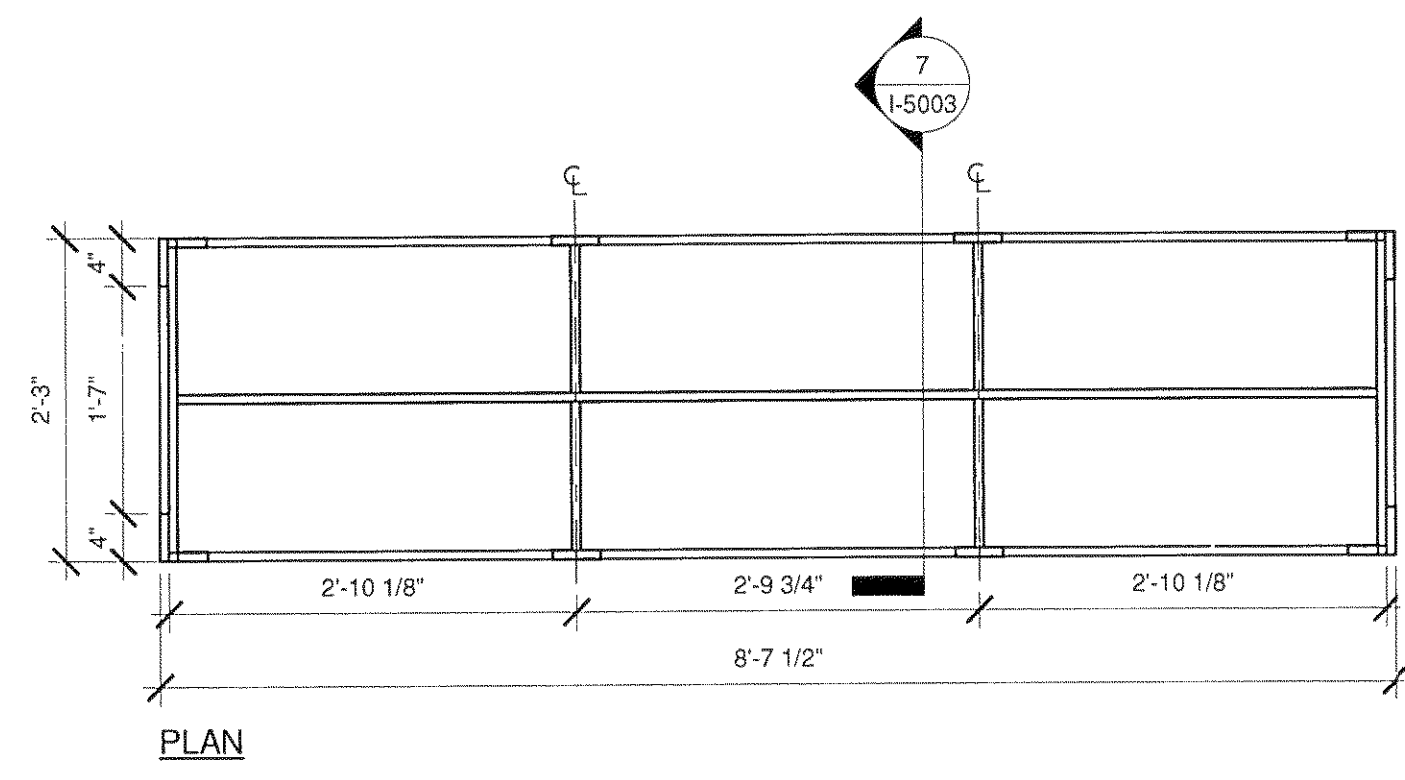
NOTE: MODIFIED BASED ON DID 13353. DETAIL MODIFIED FOR DIMENSIONS ONLY. VERIFY FINAL DIMENSION IN FIELD.

2 X0307 RESERVE PANEL
 Scale: 3/4" = 1'-0"

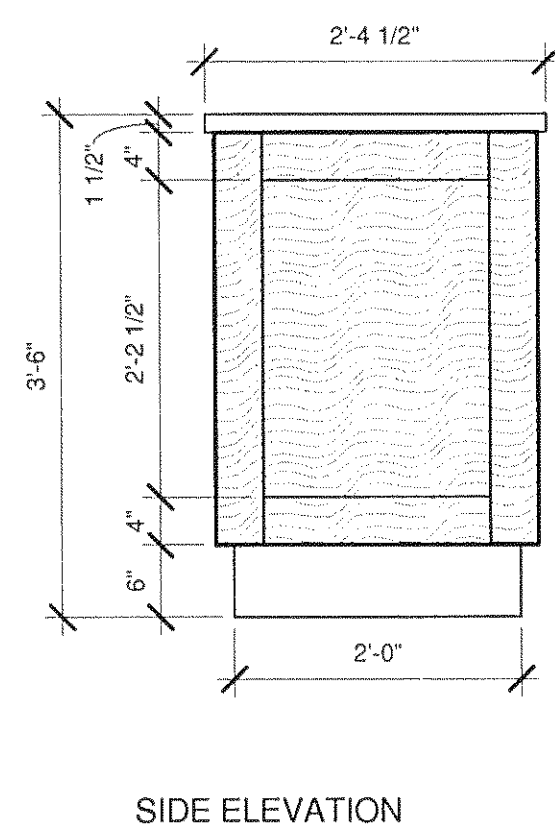


NOTE: MODIFIED BASED ON DID 13359. DETAIL MODIFIED FOR DIMENSIONS ONLY. VERIFY FINAL DIMENSION IN FIELD.

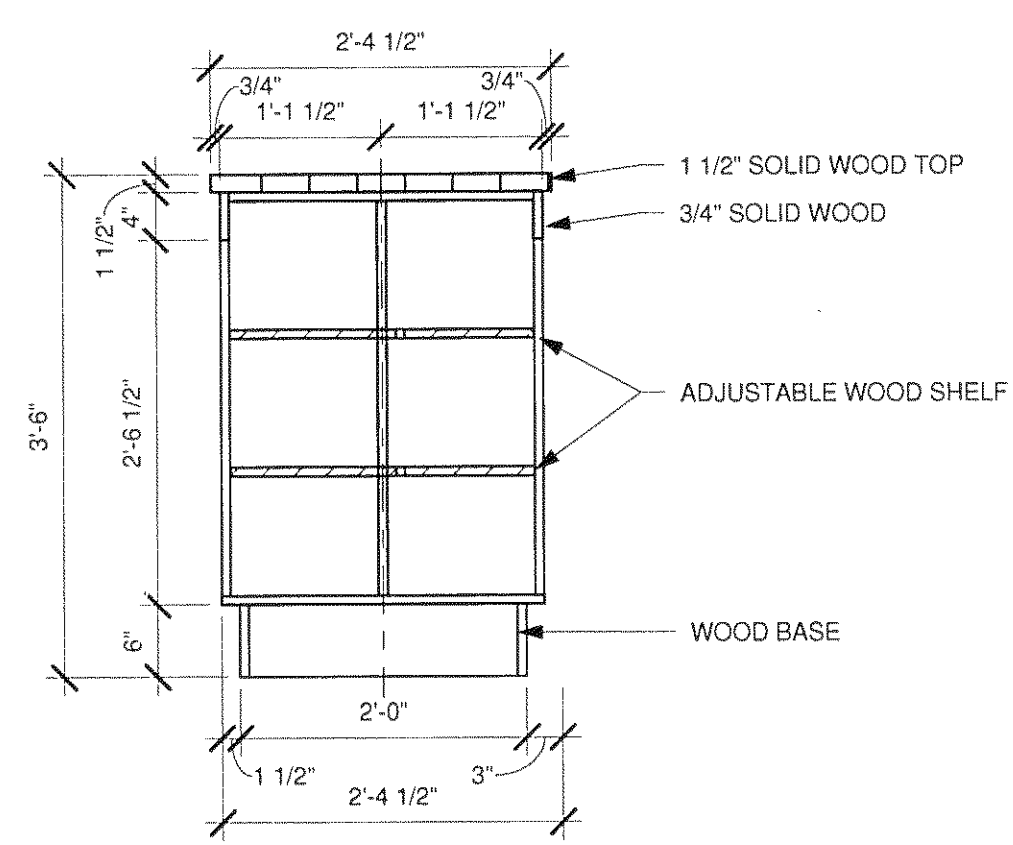
3 X0306 RESERVE TOP CAP
 Scale: 3/4" = 1'-0"



5 X0311 CUSTOM MERCH SHELVING
 Scale: 3/4" = 1'-0"

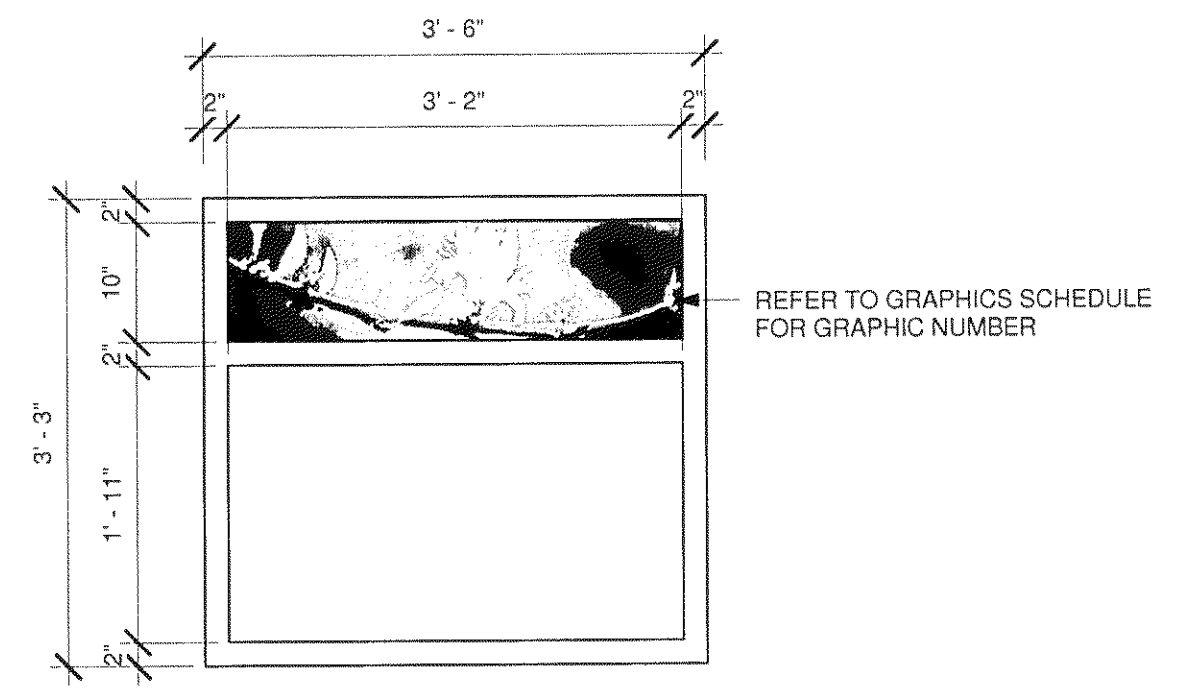


SIDE ELEVATION



7 X0311 SECTION
 Scale: 3/4" = 1'-0"

NOTE: REFER TO CASEWORK FINISH SCHEDULE



8 X0402 COMMUNITY BOARD
 Scale: 3/4" = 1'-0"

REFER TO GRAPHICS SCHEDULE FOR GRAPHIC NUMBER