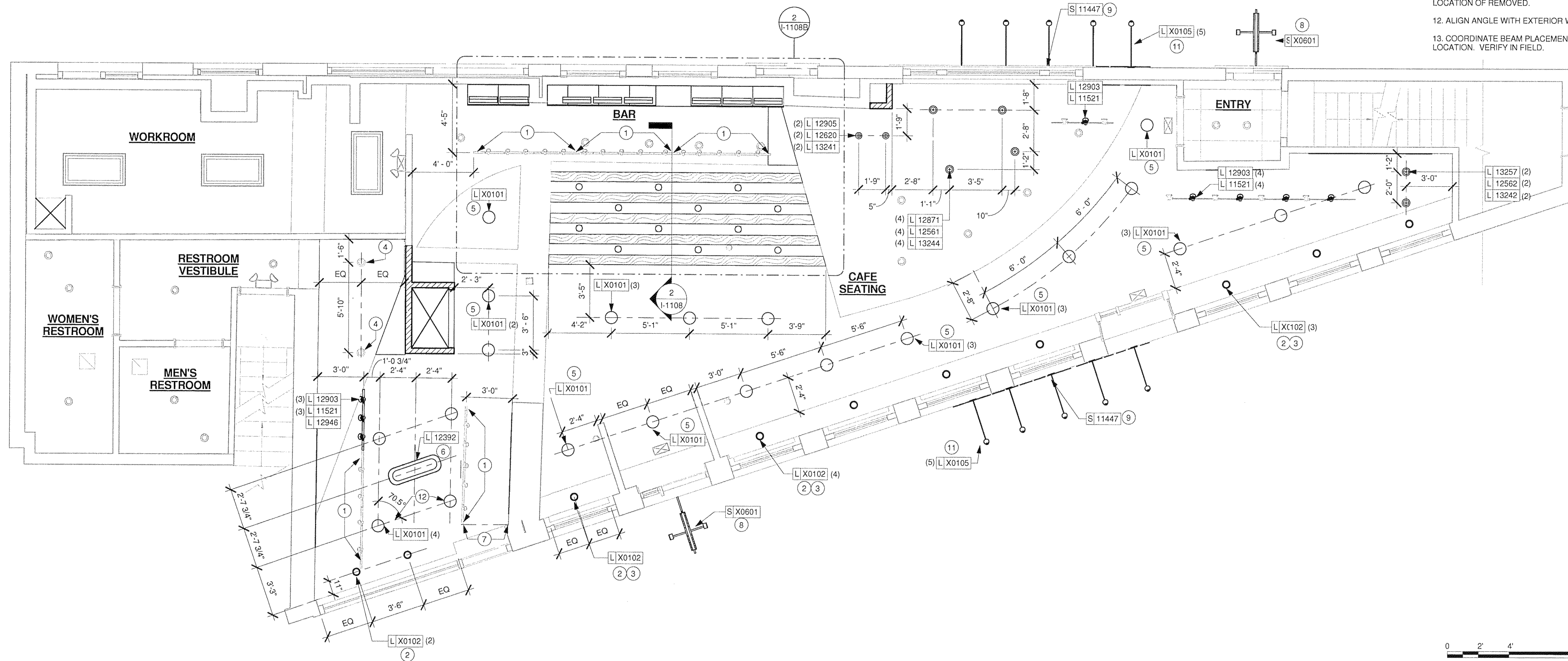
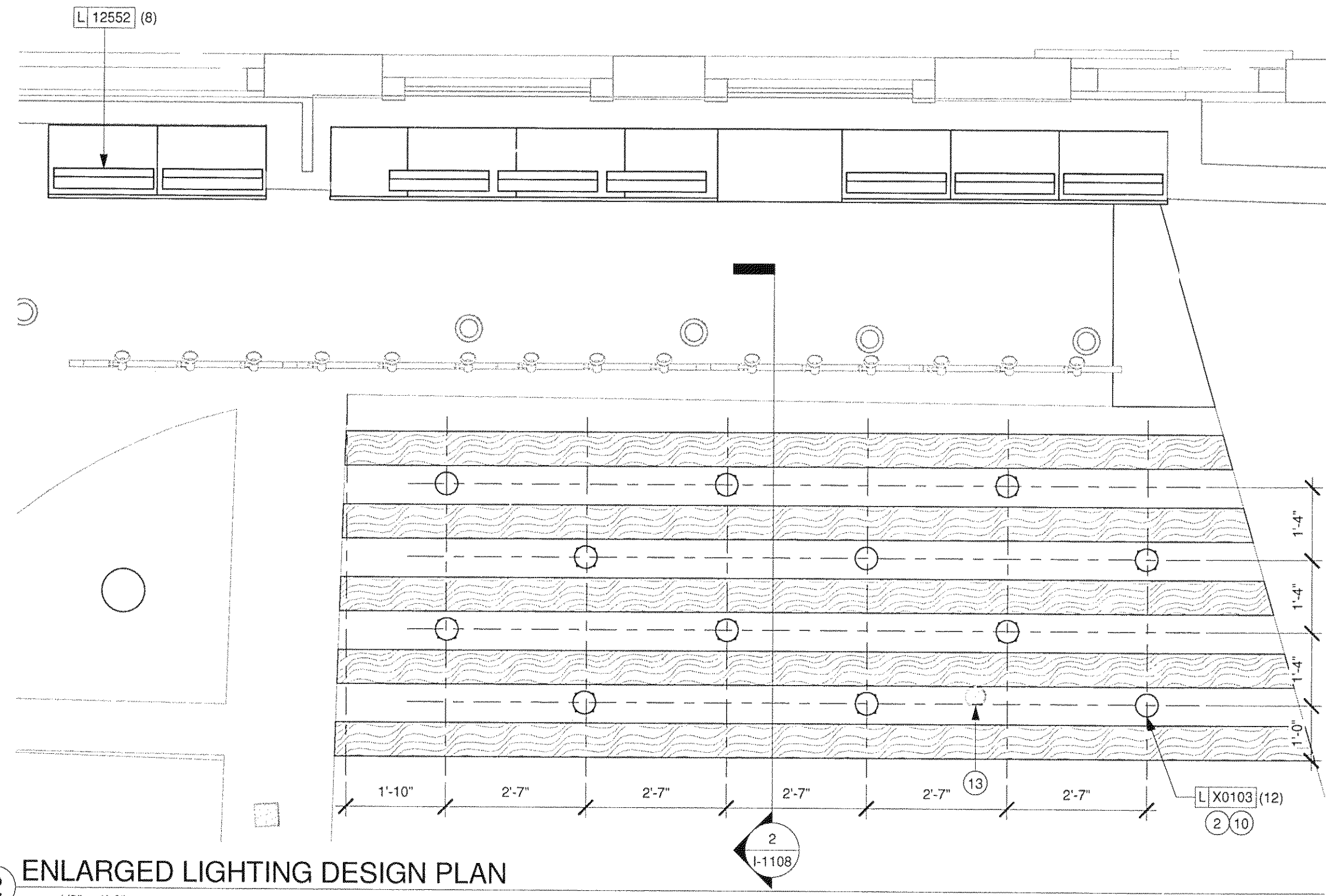


12/17/2013 5:42:11 PM N:\Starbucks\Starbucks Northeast\ME-STRM0127_7433_Hay Building, ME\05_Implementation\Revit\7433_Hay Building_ME_OTP.rvt



1 LIGHTING DESIGN PLAN
Scale: 1/4" = 1'-0"

2 ENLARGED LIGHTING DESIGN PLAN
Scale: 1/2" = 1'-0"



LIGHTING DESIGN PLAN NOTES

- A. ALL FIXTURES IN WORK ROOM, BACK AND FRONT LINE, ABOVE CONDIMENT CART, AND ANY OTHER AREAS WHERE EXPOSED FOOD, CLEAN EQUIPMENT OR UTENSILS, OR UNWRAPPED SINGLE SERVICE ITEMS WILL BE EXPOSED, SHALL HAVE SHATTERPROOF LAMPS IF THE FIXTURE IS NOT LENSED. ARCHITECT OF RECORD TO INCLUDE APPROPRIATE LAMPS / FIXTURES ON DRAWINGS AND SCHEDULES, AND COMPLY WITH ANY ADDITIONAL JURISDICTIONAL LIGHTING REQUIREMENT.
- B. PROVIDE GROMMET AT ALL CEILING PENETRATIONS FOR FIXTURES/SUPPORTS.
- C. CENTER EMERGENCY/EXIT LIGHTS ABOVE DOORS, UNLESS OTHERWISE NOTED.
- D. ADJUST FOCUS OF ALL TRACK AND RECESSED DIRECTIONAL LIGHTING TO FULLY ILLUMINATE ALL ARTWORK, MENU BOARDS, AND MERCHANDISE BAYS.
- E. IF PENDANT CYLINDERS CAN SUSPENDED LENGTH EXCEEDS 48" (1220MM) FROM CEILING, REPLACE WITH SURFACE MOUNTED CYLINDER CANS AND SUSPEND WITH GENERAL CONTRACTOR SUPPLIED CONDUIT AND J-BOX TO DIMENSIONED HEIGHT.

SHEET NOTES

- 1. RELOCATED TRACK HEADS & TRACK. SURFACE-MOUNT TRACK DIRECTLY TO SOFFIT.
- 2. SUSPEND BOTTOM OF PENDANT LIGHTING FIXTURES AT 6'-8" AFF UNLESS OTHERWISE NOTED.
- 3. INSTALL NEW PENDANTS AT LOCATION OF REMOVED. VERIFY LOCATION IN FIELD.
- 4. RELOCATED RECESSED CANS.
- 5. INSTALL SURFACE MOUNTED FIXTURE AT LOCATION OF REMOVED. VERIFY LOCATION IN FIELD.
- 6. CENTER PENDANT OVER COMMUNITY TABLE AT 6'-8" AFF UNLESS OTHERWISE NOTED. GC TO VERIFY LOCATION AND COORDINATE INSTALLATION IN FIELD.
- 7. ALIGN EDGE OF TRACK WITH CORNER OF WALL.
- 8. INSTALL NEW LOGO DISK WITH INTEGRATED LIGHTING AT LOCATION OF REMOVED.
- 9. INSTALL NEW INLINE WORDMARK AT LOCATION OF REMOVED.
- 10. INSTALL PENDANTS CENTERED BETWEEN WOOD BEAMS. VERIFY LOCATION IN FIELD.
- 11. INSTALL NEW EXTERIOR GOOSENECK SCENCE AT LOCATION OF REMOVED.
- 12. ALIGN ANGLE WITH EXTERIOR WALL. VERIFY IN FIELD.
- 13. COORDINATE BEAM PLACEMENT WITH EXISTING COLUMN LOCATION. VERIFY IN FIELD.

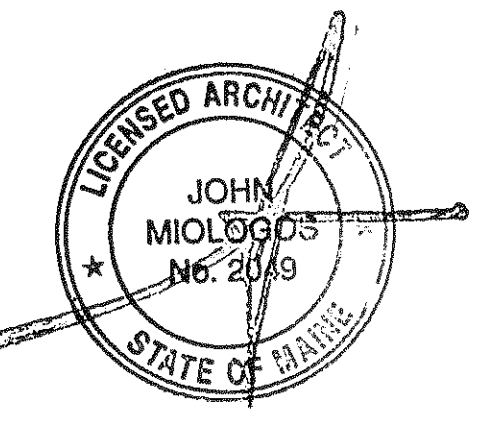


STARBUCKS COFFEE COMPANY
2401 UTAH AVENUE SOUTH
SEATTLE, WASHINGTON 98134
(206) 318-1575

THESE DRAWINGS AND SPECIFICATIONS ARE CONFIDENTIAL AND SHALL REMAIN THE SOLE PROPERTY OF STARBUCKS CORPORATION, WHICH IS THE OWNER OF THE COPYRIGHT IN THIS WORK. THEY SHALL NOT BE REPRODUCED (IN WHOLE OR IN PART), SHARED WITH THIRD PARTIES OR USED IN ANY MANNER ON OTHER PROJECTS OR EXTENSIONS TO THIS PROJECT WITHOUT THE PRIOR WRITTEN CONSENT OF STARBUCKS CORPORATION.

Revision Schedule			
Rev	Date	By	Description

FULL REMODEL



PROJECT NAME: **HAY BUILDING**
PROJECT ADDRESS: **594 CONGRESS STREET
PORTLAND, ME 04101**
COUNTY: **CUMBERLAND**

STORE #: 7433
PROJECT #: 04704-026
CONCEPT: NCS
PALETTE: REGIONAL MODERN
ISSUE DATE: 12-16-2013
DESIGN MANAGER: ETA KLIGER
LEED® AP: N/A
PRODUCTION DESIGNER: J.NEAL
CHECKED BY: T. REISING

SHEET TITLE:
LIGHTING DESIGN PLAN

SCALE: As indicated

SHEET NUMBER:
I-1108B