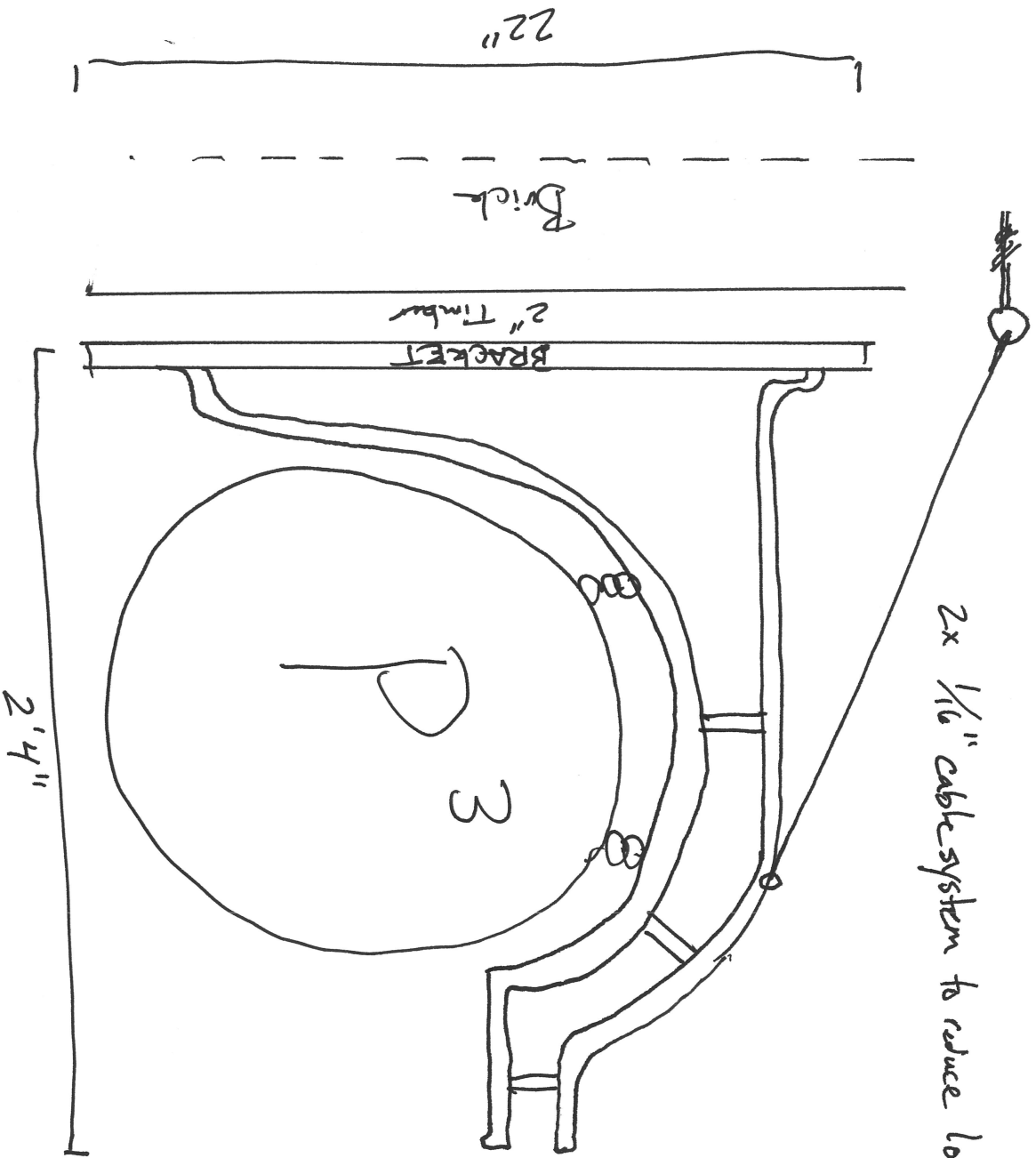


28 lbs sign

- 5x $5/16$ " lag bolt or bolts each 3-5/8" long
- 5x lag shields
- $1/2$ " x 4" pilot holes filled w/ mason's epoxy
- 2x mason's eye hooks
- 2x $1/16$ " cable, swaged ends

2x $1/16$ " cable system to reduce load



Sign constructed of wrought iron