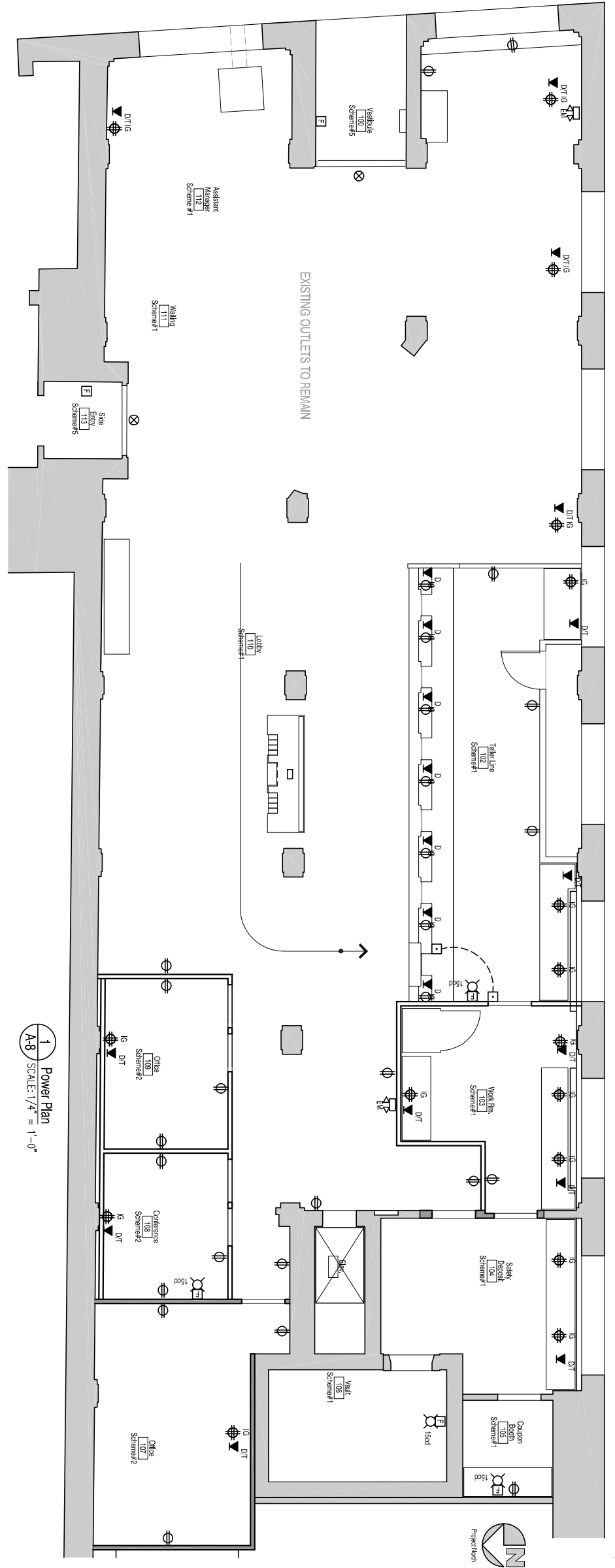


ELECTRICAL SYMBOLS

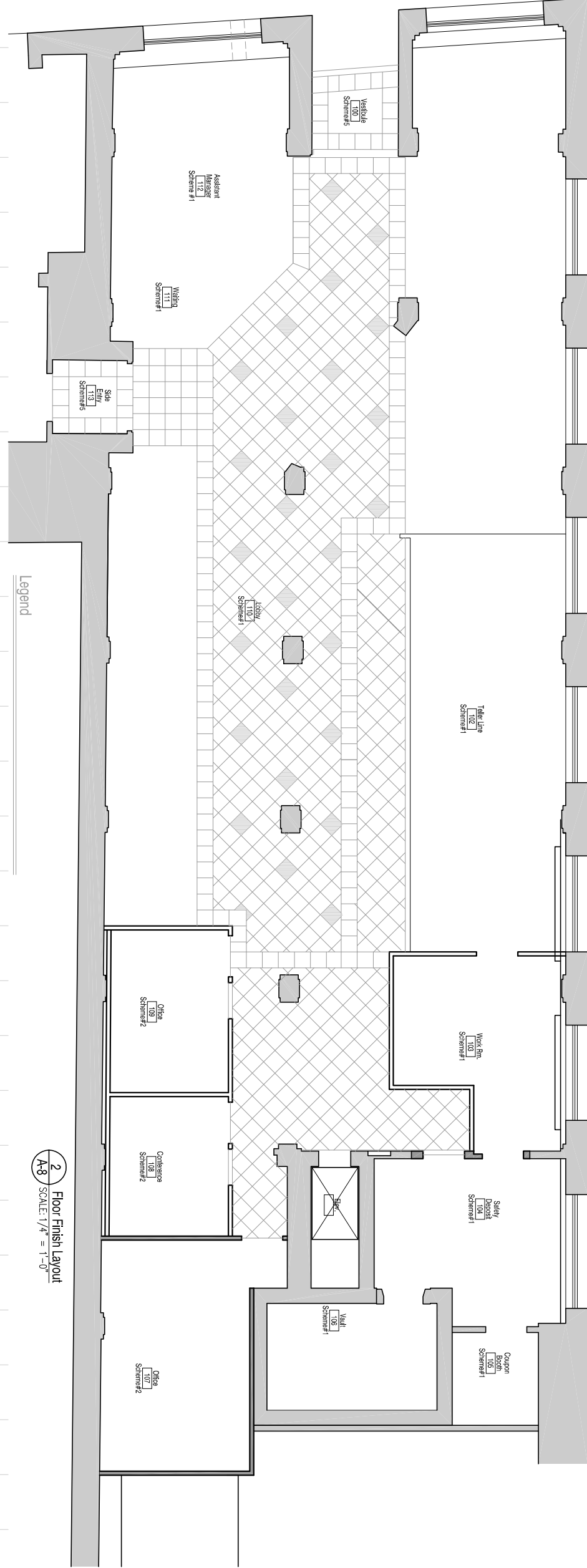
- DS-8 LIGHT SWITCH
- EM DUPLEX RECEPTACLE
- Mount 18" A.F.F. U.O.N.
- GF = Ground Fault Interrupt
- MP = Metalized Ground Type
- MP = Metalized Ground
- QUADPLEX RECEPTACLE
- DOOR BELL OR BUZZER
- TELEPHONE/DATA
- TELE = Telephone Jack
- DATA = Network Jack
- 180 = Telephone/Data Comb.
- DOOR DEVICE/CONTACT SWITCH
- KS = Key Switch
- ES = Electric Shave
- 208 EN-1 PANELBOARD (see Panel Schedule)
- EN = Normal Power Source
- ES-1 = Emergency Power Source
- LI = Light Panel
- 208 EN-1
- EN = Normal Power Source
- ES-1 = Emergency Power Source
- LI = Light Panel
- Surfaces

FIRE SAFETY LEGEND

- MANUAL PULL STATION
- HORN / GONG / BELL Warning
- Height 7'-6" A.F.F.
- AUDIO VISUAL SIGNALING DEVICE
- 300d
- VISUAL STROBE SIGNALING DEVICE
- SMOKE/FIRE DETECTOR
- H = Heat Rate of Rise Detector
- Duct/Int
- FAC
- FIRE ALARM CONTROL PANEL
- EIS
- WALL MTD EXT/EMERGENCY
- WALL MOUNTED EXIT LIGHT Mounting
- Height 7'-0" A.F.F. Provide Arrows
- as indicated on plans.
- EMERGENCY LIGHT/BATTERY 90
- Minute Operation Minimum Provide
- Arrows as indicated on plans.
- FE
- FIRE EXTINGUISHER



1 Power Plan
 A-8 SCALE: 1/4" = 1'-0"



2 Floor Finish Layout
 A-8 SCALE: 1/4" = 1'-0"

Legend



A-8
 sheet number

issued:
 project no.:

Construction Set

Peoples Heritage Bank
 477 Congress Street, Portland, Maine

Power Plan, floor finish layout.

revision #/ date

Revision Reason

date 9-26-2005 drawn by: JB 1/4" = 1'-0"

TLA
 Tel: (207) 842-8260
 Fax: (207) 842-8271
 1 (800) 232-2523

**THERIAULT/
 LANDMANN**
 ASSOCIATES

118 Congress St., Portland, ME 04101