

# COMPASS HEALTH ANALYTICS

## 477 CONGRESS STREET-7TH FLOOR PORTLAND, MAINE

### GENERAL NOTES:

- DO NOT SCALE THE DRAWINGS.
- FIELD VERIFY ALL DIMENSIONS AND LAYOUT PRIOR TO PROCEEDING WITH WORK. NOTIFY ARCHITECT IN WRITING OF ANY DISCREPANCIES OR INCONSISTENCIES. FAILURE TO REPORT ANY DISCREPANCIES WITHIN THESE CONSTRUCTION DOCUMENTS TO THE ARCHITECT WILL NOT BE GROUNDS FOR ADDITIONAL COST OR CHANGE ORDERS.
- "PROVIDE" MEANS "FURNISH AND INSTALL".
- THE CONTRACTOR SHALL BE RESPONSIBLE FOR PROVIDING ALL MATERIALS (UNLESS NOTED OTHERWISE), AND WORKMANSHIP IN ACCORDANCE WITH FEDERAL, STATE, CITY AND LOCAL BUILDING CODES AND THEIR REQUIREMENTS.
- THE CONTRACTOR AND ALL TRADES SHALL NOTE REQUIREMENTS OF "GENERAL NOTES" ON ALL SHEETS.
- REFER TO LARGE SCALE PLANS FOR PARTITION TYPES IN AREAS WHICH ARE DETAILED AT A LARGER SCALE.
- EACH TRADE TO PROVIDE SMOKE OR FIRE SEALANT AT PENETRATIONS AS REQUIRED FOR WALL TYPE. ALL SEALANT, FIRE STOPPING, AND SMOKE STOPPING ASSEMBLIES SHALL BE U.L. RATED.
- DIMENSIONS ARE FACE OF CONCRETE, FACE OF MASONRY, AND CENTERLINE OF INTERIOR STUD PARTITIONS, EXTERIOR STUD PARTITIONS ARE DIMENSIONED TO EXTERIOR FACE OF STUD, UNLESS INDICATED OTHERWISE.
- REFER TO SHEET AE201 FOR TYPICAL MOUNTING HEIGHTS OF PLUMBING FIXTURES, RESTROOM ACCESSORIES & MISCELLANEOUS ITEMS.
- TOILET ACCESSORIES ARE IDENTIFIED BY A KEY NOTE ON FLOOR PLANS.
- REFER TO ALL CONSTRUCTION DOCUMENTS FOR REQUIREMENTS WHICH MAY AFFECT THE WORK IN ANOTHER AND COORDINATE WORK.
- REFERENCE DETAILS AND ENLARGED PLANS FOR ADDITIONAL DIMENSIONAL INFORMATION.
- DOOR JAMBS SHALL BE LOCATED 6" FROM CORNER IN STUD PARTITIONS AND 8" FROM CORNER IN MASONRY PARTITIONS, UNLESS INDICATED OTHERWISE.

### ABBREVIATIONS

AB ANCHOR BOLT	LF ANGLE; LENGTH
AC, A/C AIR CONDITIONING	LF LEFT SHEET LINOLEUM
ACCU AIR CONDITIONING CONDENSER UNIT	LL LIVE LOAD
ACPLAS ACOUSTICAL PLASTER	LLH LONG LEG HORIZONTAL
ACT ACOUSTIC CEILING TILE	LLV LONG LEG VERTICAL
AFF ABOVE FINISHED FLOOR	LP LIGHTING PANEL; LIQUIFIED PROPANE
AGG AGGREGATE	
ALT ALTERNATE	
AP ACCESS PANEL	
APROX APPROXIMATE	MAX MAXIMUM
ARCH ARCHITECTURAL	MB MARKER BOARD
	MDO MEDIUM DENSITY OVERLAY
BCX BOTTOM CHORD EXTENSION	MECH MECHANICAL
BD BOARD	MFR MANUFACTURER
BIT BITUMINOUS	MIN MINIMUM
BLDG BUILDING	MISC MISCELLANEOUS
BLP BORROWED LIGHT PANEL	MO MASONRY OPENING
BO BOTTOM	MR MOISTURE-RESISTANT
BOF BOTTOM OF FOOTING	MUA MAKE-UP AIR
BOS BOTTOM OF STEEL	
BOT BOTTOM	
BRDG BRIDGING	N NOSING
BRG BEARING	NCB NEW CATCH BASIN
BS BOTH SIDES	NDMH NEW DRAIN MANHOLE
BSE BRICK SHELF ELEVATION	NSD NEW STORM DRAIN LINE
	NSS NEW SANITARY SEWER LINE
C CHANNEL	NTS NOT TO SCALE
CB CATCH BASIN; CHALKBOARD	NW NEW WATER LINE
CEM CEMENTITIOUS BACKER BOARD	
CFM CUBIC FEET PER MINUTE	OC ON CENTER
CIP CAST IN PLACE	OF OUTSIDE FACE
CJ CONTROL JOINT; CONSTRUCTION JOINT	OH OVERHEAD
CL CENTER LINE	
CLL CONTRACT LIMIT LINE	PA PUBLIC ADDRESS
CLR CLEAR	PAF POWDER-ACTUATED FASTENER
CMU CONCRETE MASONRY UNIT	PDU POOL DEHUMIDIFICATION UNIT
COL COLUMN	PL PLATE; PROPERTY LINE
CONC CONCRETE	PLAM PLASTIC LAMINATE
CONT CONTINUOUS	PLF POUNDS PER LINEAR FOOT
CT CERAMIC TILE	PP POWER PANEL
CUH CABINET UNIT HEATER	PSF POUNDS PER SQUARE FOOT
	PSI POUNDS PER SQUARE INCH
D DIAMETER	PT PRESSURE-TREATED
DBL DOUBLE	PVC POLYVINYL CHLORIDE
DF DRINKING FOUNTAIN	PVMT PAVEMENT
DL DEAD LOAD	
DR DISPLAY RAIL	R RISER; RADIUS
DTL DETAIL	RB RESILIENT BASE
DW DISHWASHER	RD ROOF DRAIN
DWG DRAWING	REIN REINFORCED
	REQ'D REQUIRED
EA EACH	RT RIGHT
EF EXHAUST FAN; EACH FACE	RO ROUGH OPENING
EJ EXPANSION JOINT	ROW RIGHT OF WAY
EL ELEVATION	RR RUB-RAIL
ELEC ELECTRICAL	RTU ROOFTOP UNIT (HVAC)
EOP EDGE OF PAVEMENT	
EPDM ETHYLENE PROPYLENE DIENE MONOMER	SACT SUSPENDED ACOUSTIC TILE CEILING
EQ EQUAL	SC SOLID CORE
EW EACH WAY	SF SQUARE FOOT; SUPPLY FAN SHEET
EWG ELECTRIC WATER COOLER	SHT SHEET
EXIST EXISTING	SM SIMILAR
EXP EXPANSION	SK SHEAR KEY
EXT EXTERIOR	SN SANITARY NAPKIN (DISPENSER)
	SS SPECIAL
FB FLAT BAR	STA STATION
FBO FURNISHED BY OTHERS	STL STEEL
FOO FLOOR CLEAN-OUT	STRUC STRUCTURAL
FD FLOOR DRAIN	
FE FIRE EXTINGUISHER	T TREAD
FF FINISHED FLOOR; FAR FACE	TB TACKBOARD
FFE FINISHED FLOOR ELEVATION	T&B TOP AND BOTTOM
FO FRAMED OPENING	TBM TEMPORARY BENCHMARK
FRP FIBERGLASS REINFORCED PLASTIC	TCE TOP CHORD EXTENSION
FS FAR SIDE	TJ TIE JOIST
FTC FOOTING	TO TOP OF
	TOC TOP OF CONCRETE
GA GAUGE	TOF TOP OF FOOTING
GALV GALVANIZED	TON TOP OF MASONRY
GB GRAB BAR	TOS TOP OF SLAB
GC GENERAL CONTRACTOR	TOW TOP OF WALL
GDT GYPSUM DROP-IN TILE	
GV GRAVITY VENT	TP TOILET PAPER (DISPENSER); TEST PIT
GWB GYPSUM WALL BOARD	TS TUBE STEEL
	TYP TYPICAL
H HORIZONTAL	
HC HANDICAPPED; HOLLOW CORE	
HORIZ HORIZONTAL	
HM HOLLOW METAL	
HRU HEAT RECOVERY UNIT	
H&V HEATING AND VENTILATING	
HVAC HEATING, VENTILATING AND AIR CONDITIONING	
I INCLUDED ANGLE	
ID INSIDE DIAMETER	
IF INSIDE FACE	
IJ ISOLATION JOINT	
IMP IMPACT RESISTANT	
INS INSULATED	
INV INVERT	
JS JOIST SUBSTITUTE	
K KIPS	

### SYMBOL LEGEND

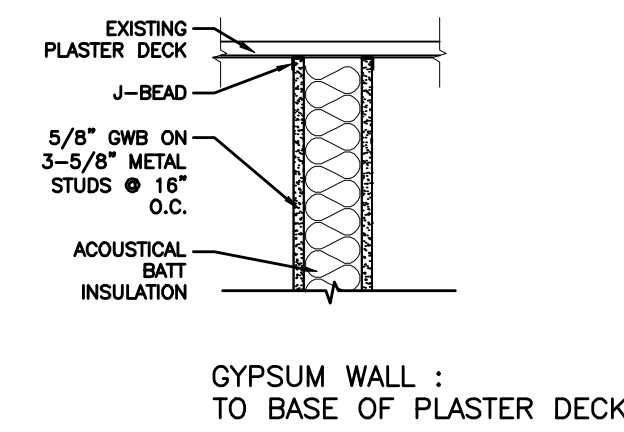
	WALL SECTION
	DETAIL
	INTERIOR ELEVATION
	PARTITION TAG
	DOOR TAG
	ROOM NAME ROOM NUMBER
	COLUMN BUBBLE AND CENTER LINE

GRID NO.	TITLE
SCALE	REFERENCE SHEET

..... 1 HOUR RATING

### DRAWING LIST

GENERAL	
G1001	COVER SHEET/ GENERAL INFORMATION
ARCHITECTURAL	
AD101	DEMOLITION FLOOR AND CEILING PLANS
AE101	FLOOR PLAN AND REFLECTED CEILING PLAN
AE201	CASEWORK ELEVATIONS & DETAILS
AE601	DOOR SCHEDULE AND ROOM FINISH SCHEDULE



### PARTITION LEGEND

<p> PARTITION: 3 5/8" METAL STUDS W/ GYPSUM WALL BOARD BOTH SIDES EXTENDED TO 6" ABOVE HIGHEST ADJACENT CEILING. BRACE TOP OF WALL TO STRUCTURE ABOVE. REFER TO FINISH SCHEDULE FOR APPLIED FINISHES SUCH AS TILE. PROVIDE SPECIFIED TILE SUBSTRATE IN PLACE OF GYPSUM BOARD WHERE TILE IS SCHEDULED, TYP.</p>	
<p> PARTITION / 1 HOUR FIRE RATED WALL - UL# U465: 3 5/8" METAL STUDS EXTENDED TO BOTTOM OF STRUCTURE ABOVE, ACOUSTIC BATT INSULATION BETWEEN STUDS, 5/8" TYPE X GYPSUM WALL BOARD FULL HEIGHT ON BOTH SIDES. PROVIDE FIRE CAULK AT ALL PERIMETERS. FIRE STOP ALL PENETRATIONS. CONSTRUCT WALL TO COMPLY WITH THE REQUIREMENTS OF UL DESIGN #U465. REFER TO FINISH SCHEDULE FOR APPLIED FINISHES SUCH AS TILE. PROVIDE SPECIFIED TILE SUBSTRATE IN PLACE OF GYPSUM BOARD WHERE TILE IS SCHEDULED, TYP.</p>	
<p> PARTITION / ACOUSTIC BARRIER 3 5/8" METAL STUDS EXTENDED TO STRUCTURE ABOVE, ACOUSTIC BATT INSULATION BETWEEN STUDS. 5/8" TYPE X GYPSUM WALL BOARD EXTENDED FULL HEIGHT TO STRUCTURE ABOVE. ACOUSTIC CAULK @ ALL PERIMETERS AND ALL PENETRATIONS. REFER TO FINISH SCHEDULE FOR APPLIED FINISHES SUCH AS TILE. PROVIDE SPECIFIED TILE SUBSTRATE IN PLACE OF GYPSUM BOARD WHERE TILE IS SCHEDULED, TYP.</p>	
<p> 3/8" METAL STUD WALL WITH SOUND BATT INSULATION AND 1 LAYER 5/8" TYPE X GWB. EA. SIDE TO CEILING GRID. ATTACH TO CEILING GRID (SEE DETAIL ABOVE).</p>	
<p> 3/8" METAL STUD WALL WITH SOUND BATT INSULATION AND 1 LAYER 5/8" TYPE X GWB. EA. SIDE TO CEILING GRID. ATTACH TO CEILING GRID (SEE DETAIL ABOVE).</p>	

REV.	DESCRIPTION	DATE
0	ISSUED FOR OWNER REVIEW	5-1-06

**ISSUED FOR OWNER REVIEW**  
5-1-06

CURRENT ISSUE STATUS:		

**SMRT** ARCHITECTURE ENGINEERING PLANNING  
SMRT  
144 Fore Street/P.O. Box 618  
Portland, Maine 04104  
tel. (207) 772-3846  
fax. (207) 772-1070

**COMPASS CONSULTING**  
477 CONGRESS STREET 7TH FLOOR  
PORTLAND, MAINE

PROJECT: COVER SHEET	
SHEET TITLE:	
SCALE: NTS	DATE: 5-1-06
PROJECT MANAGER: JLH	GRAPHIC SCALE: 0" = 1"
JOB CAP/DRAWN: PJP	
A/E OF RECORD: JLH	SHEET No. G1001
SMRT CAD FILE: G1001-06049	
PROJECT No. 06049	