

ROOM FINISH SCHEDULE											
ROOM NUMBER	ROOM NAME	FLOOR	BASE	WALLS				CEILING		ROOM NUMBER	REMARKS
				NORTH	SOUTH	EAST	WEST	MATERIAL	HEIGHT		
700	ELEVATOR LOBBY	EXIST (1)	EXIST (1)	GWB/PT	GWB/PT	GWB/PT	GWB/PT	PT (2)	8'-6"	700	
701	RECEPTION	CPT	WD	GWB/PT	GWB/PT	GWB/PT	GWB/PT	ACT	8'-6"	701	
702	CONFERENCE ROOM	CPT	WD	GWB/PT	GWB/PT	GWB/PT	GWB/PT	ACT	8'-6"	702	
703	STAIRS	EXIST	---	---	---	---	---	ACT	8'-6"	703	
704	PROJECT ROOM	CPT	RB	GWB/PT	GWB/PT	GWB/PT	GWB/PT	ACT	8'-6"	704	
705	PROJECT ROOM	CPT	RB	GWB/PT	GWB/PT	GWB/PT	GWB/PT	ACT	8'-6"	705	
706	PROJECT ROOM	CPT	RB	GWB/PT	GWB/PT	GWB/PT	GWB/PT	ACT	8'-6"	706	
707	CORRIDOR	CPT	WD	GWB/PT	GWB/PT	GWB/PT	GWB/PT	ACT	8'-6"	707	
708	WOMEN	EXIST (3)	EXIST (3)	CT/PT (4)	CT/PT (4)	CT/PT (4)	CT/PT (4)	ACT	8'-6"	708	
709	MEN	EXIST (3)	EXIST (3)	CT/PT (4)	CT/PT (4)	CT/PT (4)	CT/PT (4)	ACT	8'-6"	709	
710	STORAGE/COMPUTER	VCT	RB	GWB/PT	GWB/PT	GWB/PT	GWB/PT	ACT	8'-6"	710	
711	SHOWER	CT	CT	GWB/PT	GWB/PT	GWB/PT	GWB/PT	ACT	8'-6"	711	
712	OPEN OFFICE	CPT	RB (5)	GWB/PT	GWB/PT	GWB/PT	GWB/PT	ACT	8'-6"	712	
713	LOUNGE	CPT	RB (5)	GWB/PT	GWB/PT	GWB/PT	GWB/PT	ACT	8'-6"	713	
714	OPEN OFFICE	CPT	RB (5)	GWB/PT	GWB/PT	GWB/PT	GWB/PT	ACT	8'-6"	714	
715	PRINTERS	CPT	RB	GWB/PT	GWB/PT	GWB/PT	GWB/PT	ACT	8'-6"	715	
716	KITCHENETTE	LINO	RB	GWB/PT	GWB/PT	GWB/PT	GWB/PT	ACT	8'-6"	716	
717	CORRIDOR	CPT	RB	GWB/PT	GWB/PT	GWB/PT	GWB/PT	ACT	8'-6"	717	
718	OPEN OFFICE	CPT	RB (5)	GWB/PT	GWB/PT	GWB/PT	GWB/PT	ACT	8'-6"	718	
719	OFFICE 11X20	CPT	RB (5)	GWB/PT	GWB/PT	GWB/PT	GWB/PT	ACT	8'-6"	719	
720	OFFICE 11X20	CPT	RB (5)	GWB/PT	GWB/PT	GWB/PT	GWB/PT	ACT	8'-6"	720	
721	OFFICE 11X20	CPT	RB (5)	GWB/PT	GWB/PT	GWB/PT	GWB/PT	ACT	8'-6"	721	
722	OFFICE 11X20	CPT	RB (5)	GWB/PT	GWB/PT	GWB/PT	GWB/PT	ACT	8'-6"	722	

FINISH NOTES:

- CLEAN/REFINISH TERRAZZO/MARBLE FLOOR & BASE.
- REMOVE EXISTING ACT & GRID. REPAIR/PAINT EXISTING PLASTER.
- CLEAN EXISTING TILE. PATCH HOLES FROM REMOVED FIXTURES.
- CLEAN/REPAIR EXISTING TILE MAINSCOT. PATCH HOLES FROM EXISTING PARTITIONS TO BE REMOVED.
- PAINTED WOOD BASE AT BUILDING EXTERIOR WALL.

DOOR SCHEDULE													
DOOR NUMBER	DOOR			GLAZING	FRAME				HWS	FIRE RATING (MIN.)	DOOR NUMBER	REMARKS	
	SIZE	MATERIAL	ELEVATION		MATERIAL	ELEVATION	HEAD	JAMB					SILL
701	3'-0" x 7'-0" x 1-3/4"	WD	FG	TEMP	HM	2	A5/AE601	A5/AE601	---	1	701		
702	3'-0" x 7'-0" x 1-3/4"	WD	FG	WIRE	HM	1	A5/AE601	A5/AE601	---	3	702		
703	EXIST*	---	---	---	---	---	---	---	---	1	703	* REPLACE HARDWARE ONLY	
704	3'-0" x 7'-0" x 1-3/4"	WD	FG	TEMP	HM	1	A5/AE601	A5/AE601	---	3	704		
705	3'-0" x 7'-0" x 1-3/4"	WD	FG	TEMP	HM	1	A5/AE601	A5/AE601	---	3	705		
706	3'-0" x 7'-0" x 1-3/4"	WD	FG	TEMP	HM	1	A5/AE601	A5/AE601	---	3	706		
708	FIT TO EXIST FRAME*	WD	F	---	---	---	---	---	---	3	708	* REPLACE DOOR FOR EXISTING FRAME	
709	FIT TO EXIST FRAME*	WD	F	---	---	---	---	---	---	3	709	* REPLACE DOOR FOR EXISTING FRAME	
710	3'-0" x 7'-0" x 1-3/4"	WD	F	---	HM	1	A5/AE601	A5/AE601	---	2	710		
711	3'-0" x 7'-0" x 1-3/4"	WD	F	---	HM	1	A5/AE601	A5/AE601	---	1	711		
715	3'-0" x 7'-0" x 1-3/4"	WD	HG	TEMP	HM	1	A5/AE601	A5/AE601	---	2	715		
719	3'-0" x 7'-0" x 1-3/4"	WD	FG	TEMP	HM	1	A5/AE601	A5/AE601	---	1	719		
720	3'-0" x 7'-0" x 1-3/4"	WD	FG	TEMP	HM	1	A5/AE601	A5/AE601	---	1	720		
721	3'-0" x 7'-0" x 1-3/4"	WD	FG	TEMP	HM	1	A5/AE601	A5/AE601	---	1	721		
722	3'-0" x 7'-0" x 1-3/4"	WD	FG	TEMP	HM	1	A5/AE601	A5/AE601	---	1	722		

GENERAL NOTES:

- RE: G101 FOR GENERAL NOTES.

DOOR SCHEDULE NOTES:

- ALL WALLS, COLUMNS, AND SOFFITS TO BE PAINTED TO MATCH EXISTING GENERAL PAINT COLOR.
- FLOORING CONTRACTORS TO FIELD VERIFY EXISTING CONDITIONS UNDER WHICH THEIR PRODUCTS WILL BE INSTALLED.
- FLOORING CONTRACTORS TO PROVIDE PRICING FOR FLOOR PREPARATION, PRICING TO INCLUDE A "NOT-TO-EXCEED" FIGURE. PRICING TO BE IDENTIFIED SEPARATELY.
- PROVIDE ADA COMPLIANT RUBBER TRANSITION STRIP TO MATCH EXISTING RUBBER COVE BASE.
- G.C. TO FIELD VERIFY ALL EXISTING DOOR SIZES.
- DOORS AND FRAMES IN RATED WALLS SHALL BE RATED TO COMPLY WITH CODE REQUIREMENTS FOR THE ASSOCIATED WALL.

DOOR ABBREVIATIONS:

- HM HOLLOW METAL FRAME
- WD WOOD
- ALUM ALUMINUM STOREFRONT
- WIRE WIRE GLASS
- TEMP TEMPERED GLASS

ROOM FINISH NOTES:

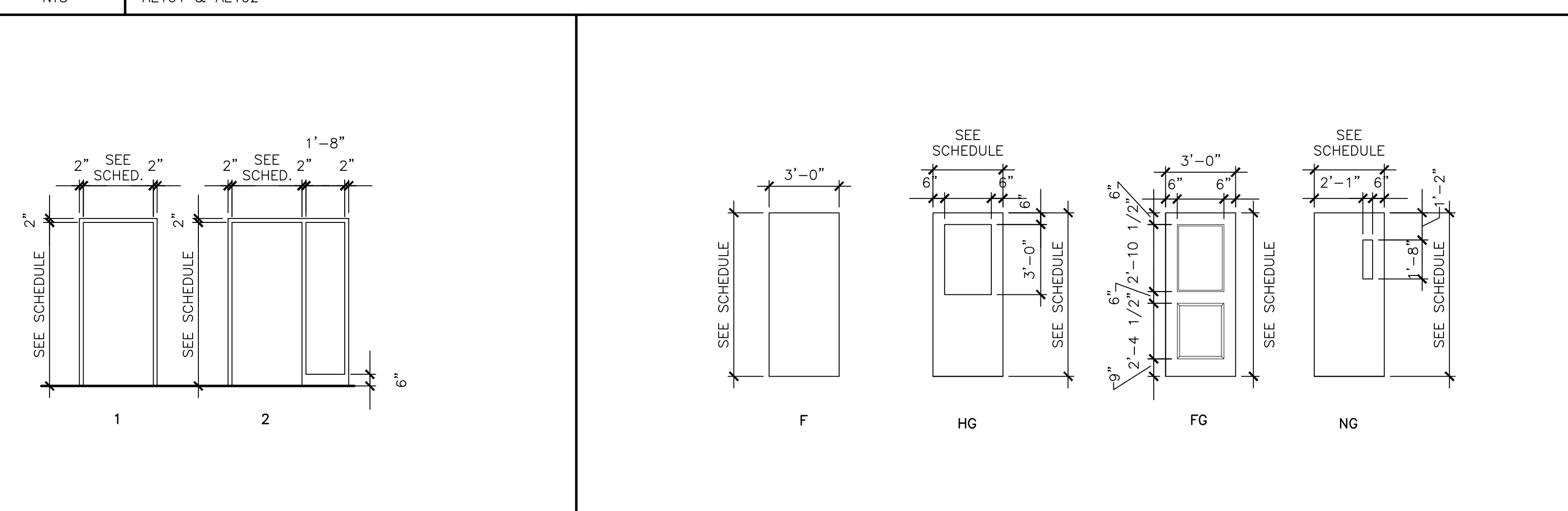
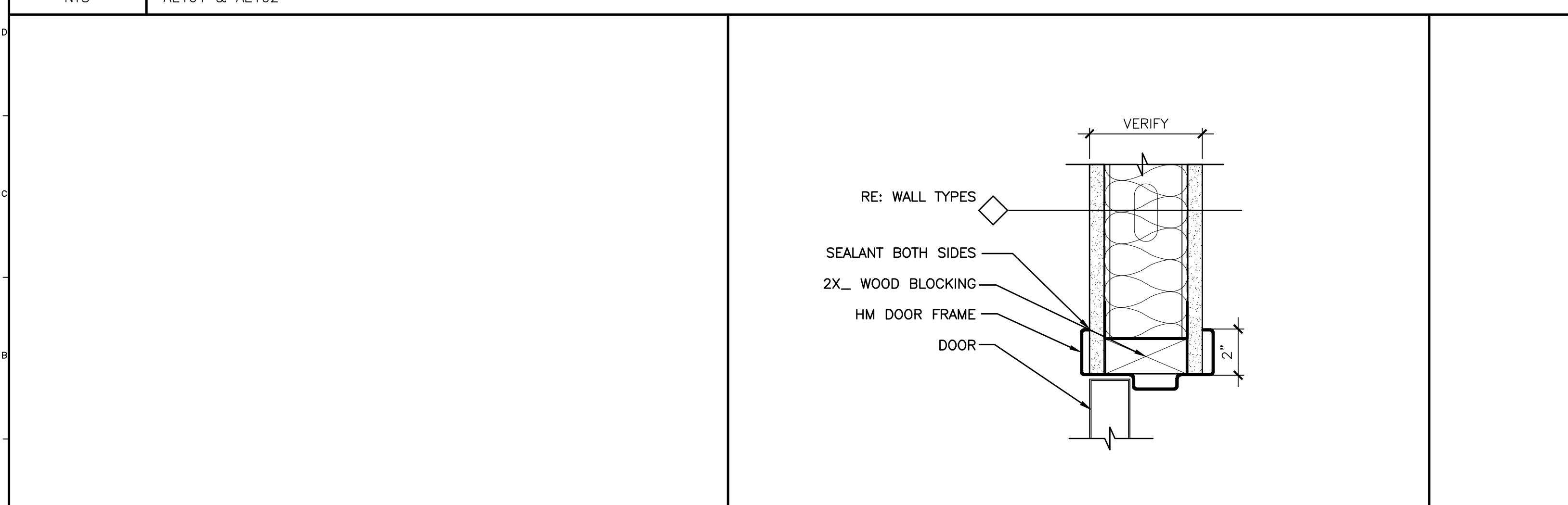
- ALL FINISH TRANSITIONS TO OCCUR @ CENTER LINE OF DOORS.
- ALL CARPET/VCT TO BE REMOVED.
- FINISH COLOR SELECTIONS TO BE DETERMINED BY OWNER.

DOOR HARDWARE SCHEDULE

- HWS 1:** 5 KNUCKLE HINGES (3 PER LEAF), ADA COMPLIANT OFFICE FUNCTION MORTISE LOCKSET, DOOR SWEEP, DOOR SILENCERS (3 PER LEAF), DOOR STOP
- HWS 2:** 5 KNUCKLE HINGES (3 PER LEAF), ADA COMPLIANT STOREROOM FUNCTION MORTISE LOCKSET, DOOR SWEEP, DOOR SILENCERS (3 PER LEAF), CLOSER, DOOR STOP
- HWS 3:** 5 KNUCKLE HINGES (3 PER LEAF), ADA COMPLIANT PASSAGE FUNCTION MORTISE LOCKSET, CLOSER, DOOR SILENCERS (3 PER LEAF), DOOR STOP.

E1	ROOM SCHEDULE
NTS	AE101 & AE102

E9	DOOR SCHEDULE
NTS	AE101 & AE102



A1	---	A5	HEAD DETAIL (JAMB SIM.)	A8	DOOR FRAME ELEVATION
		3'-1'-0"	AE601	1/4"=1'-0"	AE601

A13	DOOR ELEVATIONS
	1/4"=1'-0" AE601

0	ISSUED FOR OWNER REVIEW	5-1-06
REV.	DESCRIPTION	DATE

ISSUED FOR OWNER REVIEW
5-1-06

CURRENT ISSUE STATUS:

SMRT ARCHITECTURE ENGINEERING PLANNING
SMRT
144 Fore Street/P.O. Box 618
Portland, Maine 04104
tel. (207) 772-3846
fax. (207) 772-1070

COMPASS CONSULTING
477 CONGRESS STREET 7TH FLOOR
PORTLAND, MAINE

ROOM FINISH & DOOR SCHEDULES, DOOR & FRAME ELEVATIONS

SHEET TITLE:	SCALE: AS NOTED	DATE: 5-1-06
PROJECT MANAGER: JLH	GRAPHIC SCALE: 0" = 1"	
JOB CAP/DRAWN: PJP		
A/E OF RECORD: JLH	SHEET No.	
SMRT CAD FILE: AE601-06049		AE601
PROJECT No.		