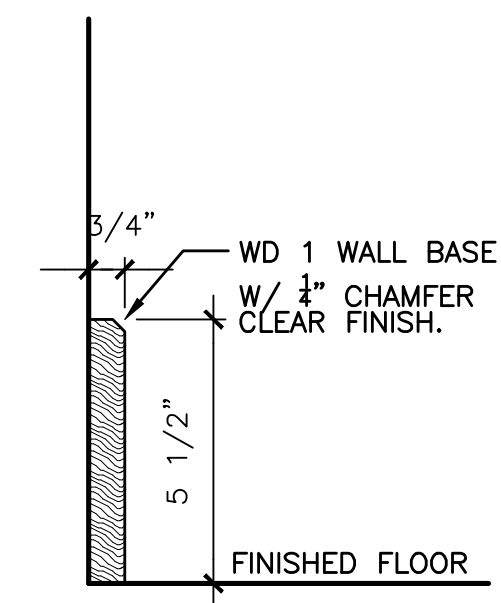
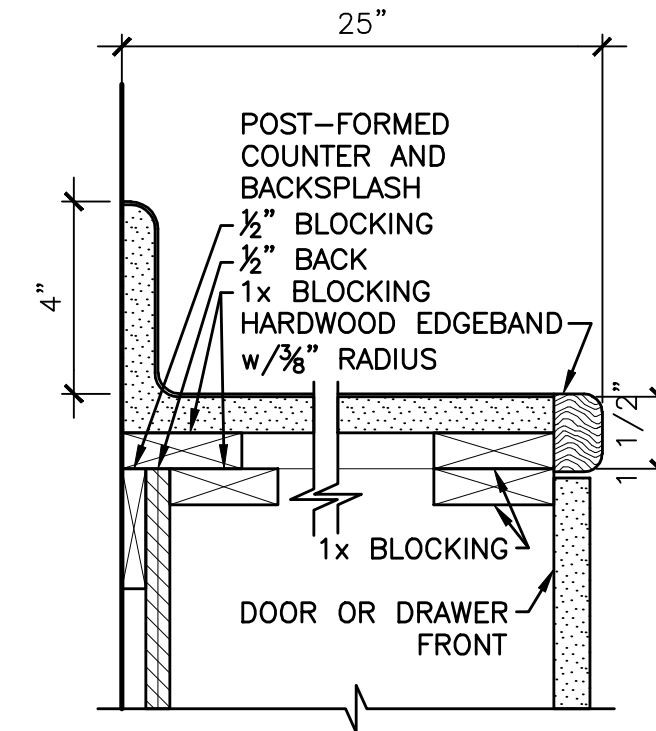


GENERAL NOTES:

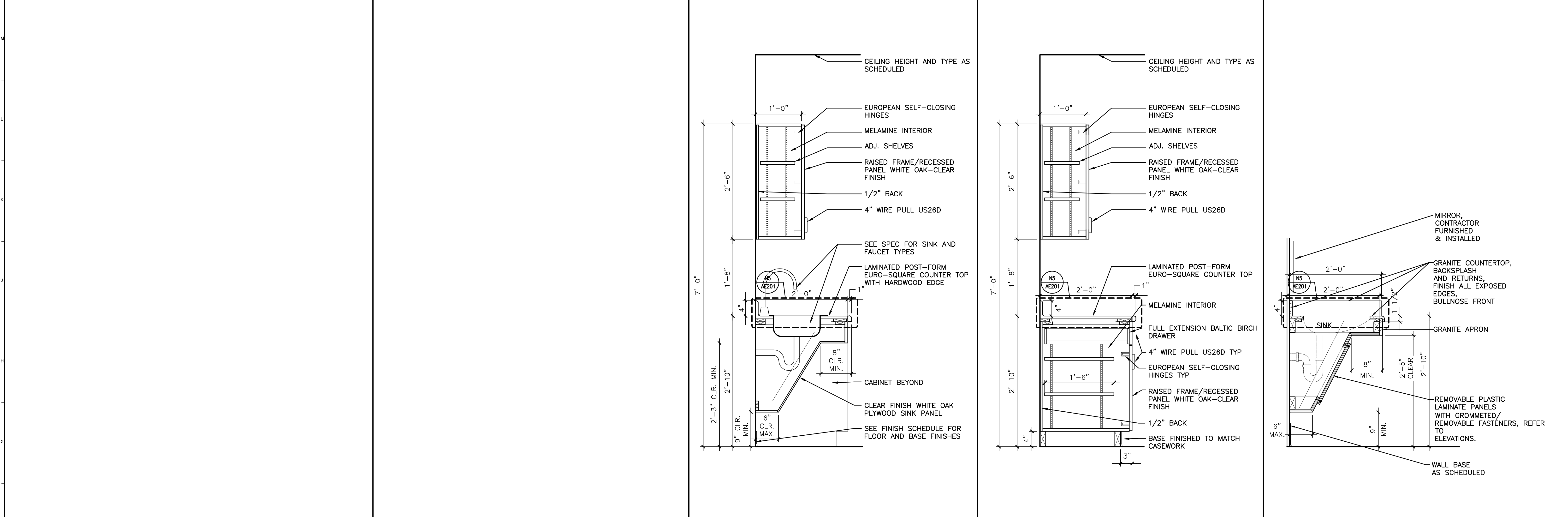
1. RE G1001 FOR GENERAL NOTES.

CASEWORK NOTES:

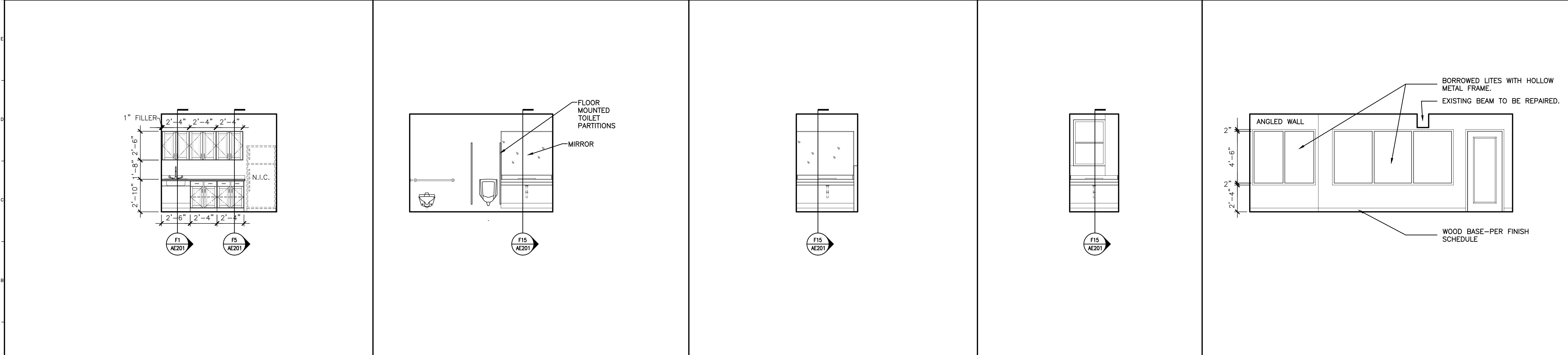
1. PROVIDE UPPER CABINET WHERE SHOWN IN ELEVATION ONLY.
2. PROVIDE A WOOD FILLER ON CASEWORK THAT IS ADJACENT TO OR BETWEEN WALLS U.N.O.
3. ADD 1 1/2" FILLER ON CASEWORK WHERE TWO CABINETS JOIN @ AN INSIDE CORNER U.N.O.
4. ALL EXPOSED CABINET END PANELS TO BE FINISHED TO MATCH CABINETS AS SPECIFIED, U.N.O.
5. RE: SPECS FOR FINISH MATERIAL SELECTIONS.



N1	—	N5	—	N9	DETAIL	N14	DETAIL
				3"=1'-0"	COUNTERS	3"=1'-0"	HARDWOOD BASE DETAIL



F1	—	F5	—	F8	SECTION	F12	SECTION	F15	SECTION
				1"=1'-0"	KITCHENETTE CASWORK	1"=1'-0"	KITCHENETTE CASWORK	1"=1'-0"	RESTROOM CASWORK



A1	ELEVATION	A5	ELEVATION	A8	ELEVATION	A11	ELEVATION	A14	ELEVATION
1/4"=1'-0"	KITCHENETTE	1/4"=1'-0"	MEN'S RESTROOM	1/4"=1'-0"	MEN'S RESTROOM	1/4"=1'-0"	WOMEN'S RESTROOM	1/4"=1'-0"	CONFERENCE ROOM WINDOW WALL

1	ISSUED FOR PRICING	5-3-06
0	ISSUED FOR OWNER REVIEW	5-1-06
REV.	DESCRIPTION	DATE

ISSUED FOR CONSTRUCTION
6-2-06

CURRENT ISSUE STATUS:		

SM RT ARCHITECTURE ENGINEERING PLANNING
SMRT
144 Fore Street/P.O. Box 618
Portland, Maine 04104
tel. (207) 772-3846
fax. (207) 772-1070

COMPASS CONSULTING
477 CONGRESS STREET 7TH FLOOR
PORTLAND, MAINE

CASEWORK ELEVATIONS AND DETAILS

SHEET TITLE:		
SCALE:	AS NOTED	DATE: 05-01-06
PROJECT MANAGER:	JLH	GRAPHIC SCALE: 0" = 1"
JOB CAP/DRAWN:	PJP	
A/E OF RECORD:	JLH	SHEET No. AE201
SMRT CAD FILE:	AE201-06049	
PROJECT No.	06049	