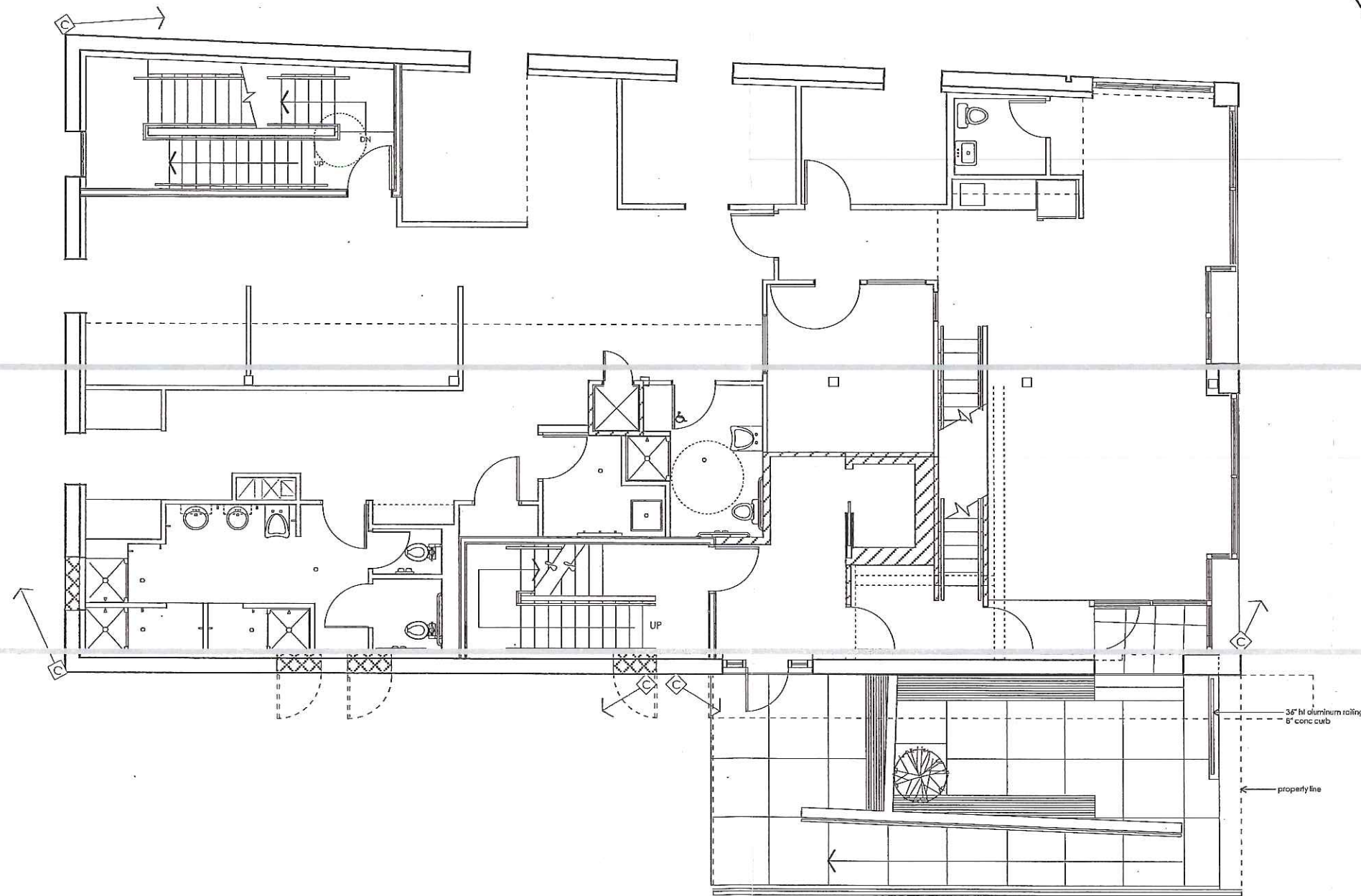


CUMBERLAND AVENUE



TEEN SHELTER
38 PREBLE STREET

1ST LEVEL PLAN

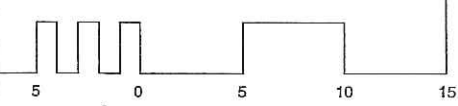
Owner:
Preble Street
18 Portland Street
Portland, Maine

Architect:
James Sterling, AIA
Architect
142 High Street
Portland, Maine

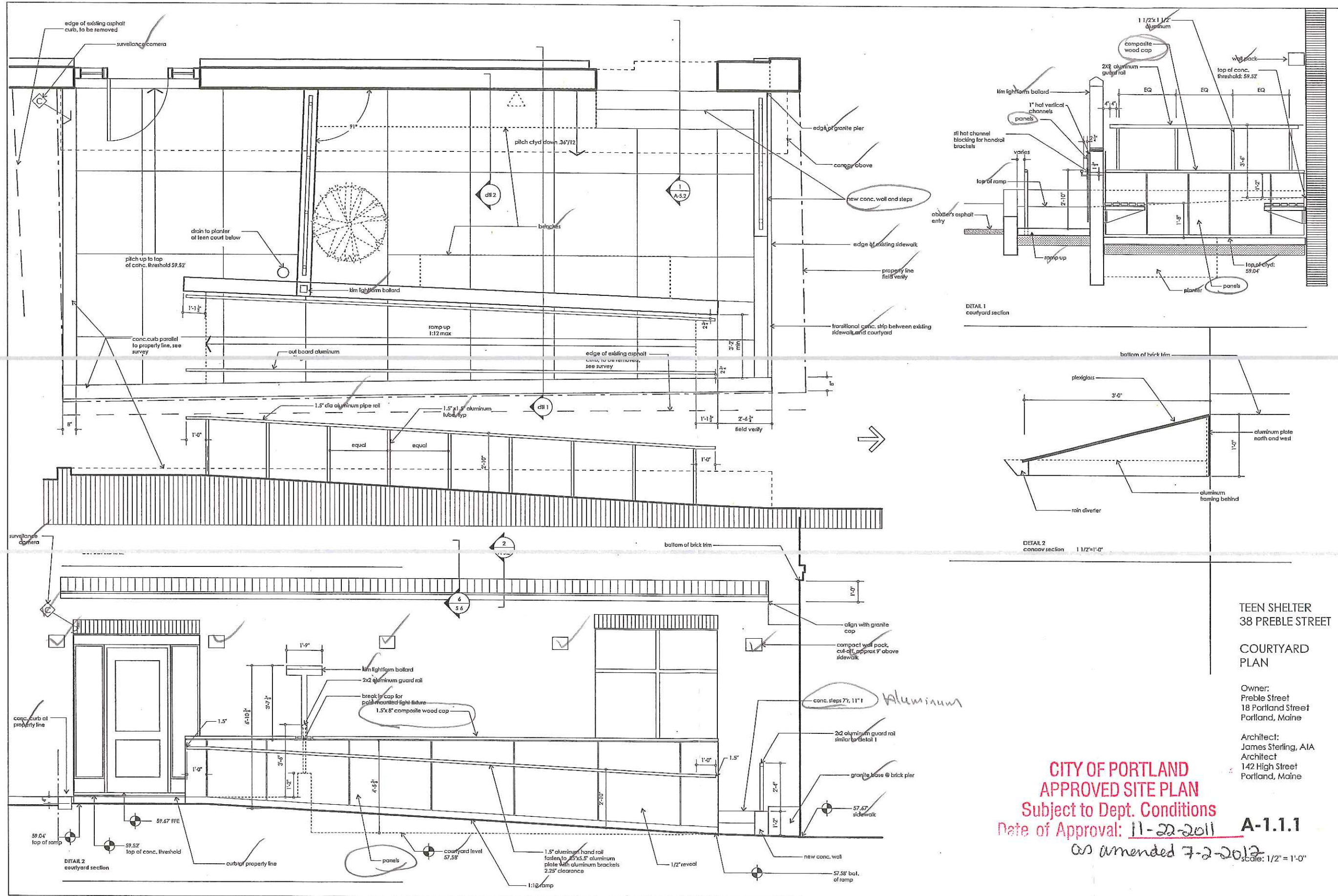
A-1.1

2011-323 38 PREBLE

CITY OF PORTLAND
APPROVED SITE PLAN
Subject to Dept. Conditions
Date of Approval: 11-22-2011 as amended 7-2-2012



Amendment June 2012



Side Elevation

TEEN SHELTER
 38 PREBLE STREET

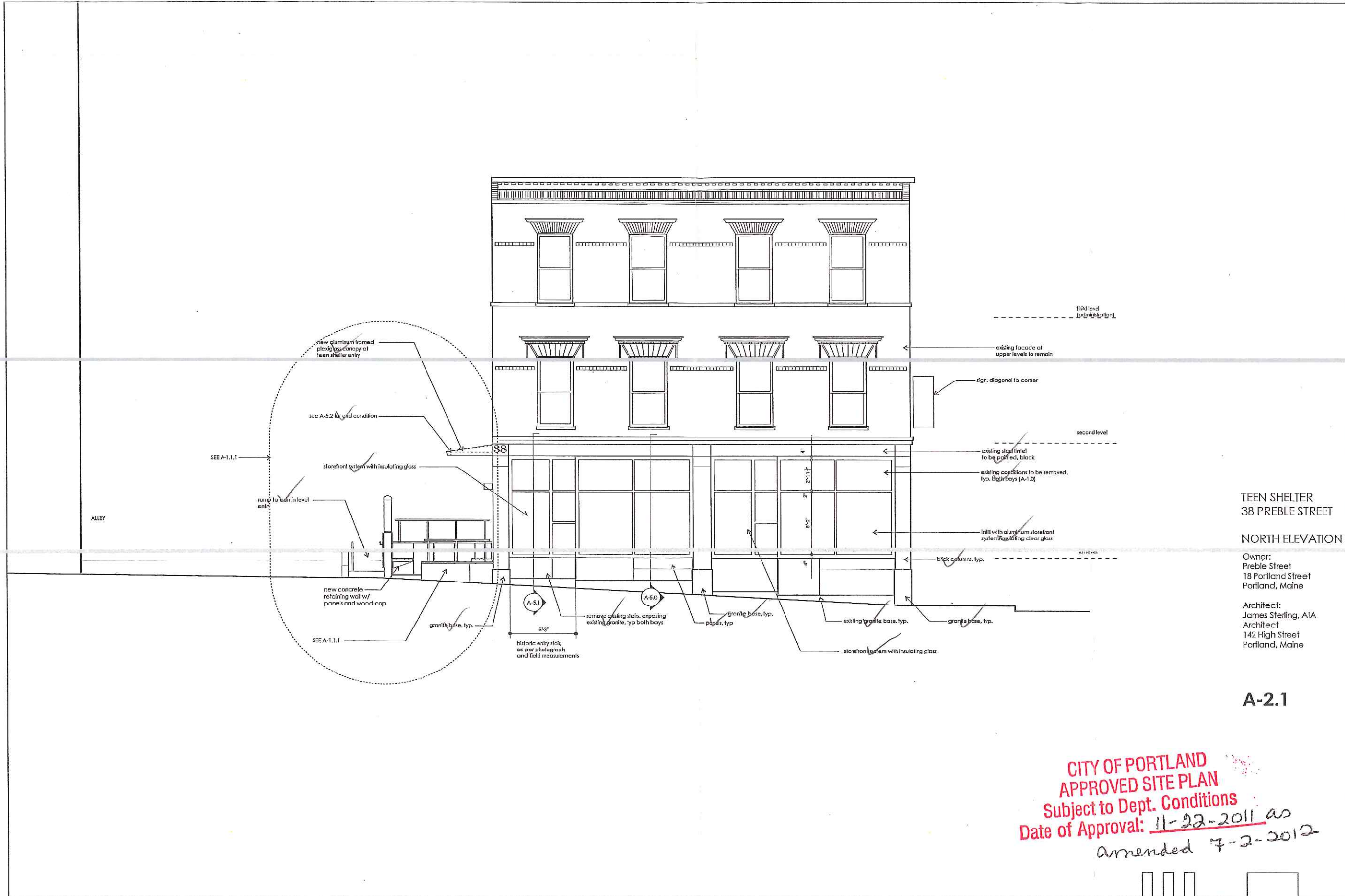
COURTYARD
 PLAN

Owner:
 Preble Street
 18 Portland Street
 Portland, Maine

Architect:
 James Sterling, AIA
 Architect
 142 High Street
 Portland, Maine

**CITY OF PORTLAND
 APPROVED SITE PLAN**
 Subject to Dept. Conditions
 Date of Approval: 11-22-2011
 as amended 7-2-2012

A-1.1.1
 scale: 1/2" = 1'-0"



TEEN SHELTER
38 PREBLE STREET
NORTH ELEVATION

Owner:
Preble Street
18 Portland Street
Portland, Maine

Architect:
James Sterling, AIA
Architect
142 High Street
Portland, Maine

A-2.1

CITY OF PORTLAND
APPROVED SITE PLAN
Subject to Dept. Conditions
Date of Approval: 11-22-2011 as
Amended 7-2-2012

5 0 5 10 15
Amendments June 2012

LAREDO SERIES
LCC SERIES

NEW

Cat.#	Approvals	
Job	Type	



SPECIFICATIONS

Intended Use

- Full cutoff*, IDA compliant entry or perimeter lighting
- Six to twelve foot typical mounting heights

Construction

- Decorative die-cast aluminum housing and door. Rugged design protects internal components and provides excellent thermal management for long life
- Flat, tempered, impact-resistant glass lens protects optics
- 800 Series powder paint finishes provide lasting appearance and are available in standard finishes: Dark Bronze, Black, White, Gray and Platinum

Electrical

- HID units are medium base; CFL units have insert and twist electronic socket
- Lamps are optional
- Systems include Pulse Start 50-70w, CFL 26-42w, HPS 50-70w and LED 12w
- Optional socket available for remote power for power outage egress applications

LED

- NEW 12 LED system delivers 802 lumens at 12.4w for 64LPW efficiency
- Universal 120-277V, 50/60Hz driver, .5 amp max

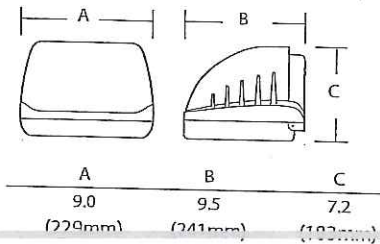
Installation

- Two-point lag mount securely holds housing to surface; Mounting template is provided.
- Designed for mounting over standard recessed junction boxes or for wiring with surface conduit; 1/2" hubs with plugs provided on top and sides for versatile access

Listings

- Listed to UL 1598 for use in wet locations
- IDA Dark Sky compliant

* (PSMH, CFL and HPS only) LED unit IDA compliant - no uplight



ORDERING INFORMATION

ORDERING EXAMPLE: LCC-70P8-1-LP

LCC	Wattage/Source/Voltage	Finish	Options
SERIES	WATTAGE/SOURCE/VOLTAGE	FINISH	OPTIONS*
LCC	ELECTRONIC FLUORESCENT	1 Bronze	PC1 Button photocontrol 120V
LCC	26F 8 26w, 120-277V	2 Black	PC2 ¹ Button photocontrol 208V
LCC	32F 8 32w, 120-277V	3 Gray	PC3 ¹ Button photocontrol 240V
LCC	42F 8 42w, 120-277V	4 White	PC4 ¹ Button photocontrol 277V
LCC	PULSE START METAL HALIDE	5 Platinum	
LCC	50P 9 50w, 120/277V		
LCC	70P 8 70w, 120-277V		
LCC	HPS		Egress Lamp Socket
LCC	50S 1 50w, 120V NPF		EM Mini can base socket only for remote, power by others (Max 50w Halogen recommended)
LCC	70S 1 70w, 120V NPF		
LCC	50S 8 50w, 120-277V		
LCC	70S 8 70w, 120-277V		LP Lamp shipped in carton with fixture (Standard on LED units) Fluorescent lamps are 3500K
LCC	LED		
LCC	12LU-5K 12w, 120-277V		

LCC LED System:

- 5000K color temperature
- Five year limited warranty
- Typical spacing of three times mounting height
- LED is IDA approved - no uplight

ACCESSORIES

LCC-SPC	Polycarbonate shield
PBT-1	120V button photocontrol
PBT-234 ¹	208/240/277V button photocontrol
PTA-1	External 120V Photocontrol (use for 70w)
PTA-8	External photocontrol 120-277V (use for 70w and above)

¹ For use on CFL and LED units only

Note: 347V is available in 50P, 70P and 70S
Example: Change 50P8 to 50P6

*Not recommended at 70w

HUBBELL OUTDOOR LIGHTING

WWW.HUBBELLOUTDOOR.COM Rev 3/11

Attachment 3.6



re Lighting Bollard

KIM LIGHTING

SL2

Site Lightforms

revision 6/17/11 • kl_sl2_spec.pdf

Type:

Job:

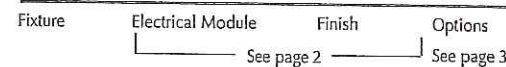
Catalog number:

Approvals:

Date:

Page: 1 of 3

SL2



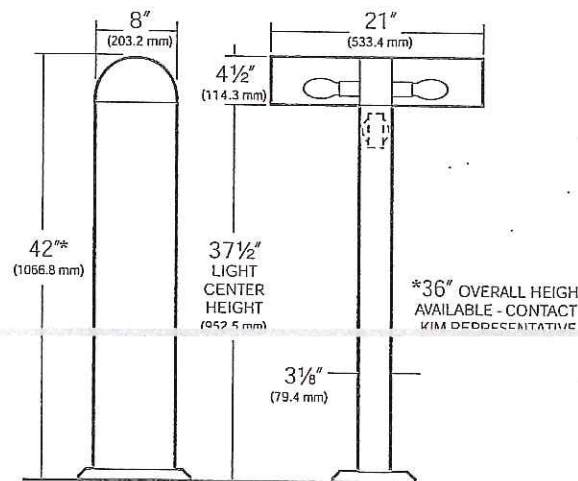
Specifications

SL2 Model

- 50 to 70 watt HID
- Medium Base Lamps
- 42 watt Compact Fluorescent
- 36 or 72 LED

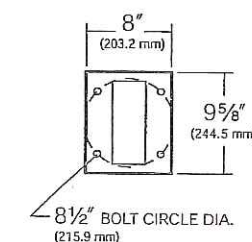
SL2

Maximum weight: 47 lb



HID drawing shown above

BASE PLAN SL2



© 2011 KIM LIGHTING • P.O. BOX 60080, CITY OF INDUSTRY, CA 91716-0080 • TEL: 626/968-5666 • FAX: 626/369-2695

Head: One-piece cast, low-copper (<0.6% Cu) aluminum, 3/16" wall thickness with external reveals to unify head and shaft. Attachment to shaft is by four bolts concealed within the head.

Shaft: One-piece extruded aluminum with internal tracks for attaching head and base.

Base: One-piece cast, low-copper (<0.6% Cu) aluminum secured to shaft by four concealed stainless steel bolts.

Reflector and Socket: (Typical of two) Formed specular Alzak® reflector panels secured to a harness which holds a porcelain medium base 4KV socket (HID and Incandescent), X24q - Universal Socket (42W Fluorescent), or two single-ended twin tube sockets (13W Fluorescent). No reflector provided for LED.

Lens: Clear flat 1/8" thick tempered glass retained by two stainless steel brackets, and four stainless steel, hex socket cap screws, fully gasketed.

Ballast: Factory mounted to rigid harness suspended from fixture head within the shaft. Wire leads supplied to base. **HID:** High power factor with starting temperatures of -20°F. for PMH and -40°F. for HPS lamp modes. **13W Fluorescent:** 120V 32°F. starting; 277V 0°F. starting. **26W, 32W, 42W Fluorescent:** High power factor with starting temperature of 0°F.

LED Optical System: A total of 9 LED emitters configured in a rectangular array comprised together as a module. four (4) modules for 36 LED version and eight (8) modules for 72 LED version. Available in 3500K and 5100K.

LED Driver: Rated for 36 or 72 LED. Universal voltage from 120 to 277V with a ±10% tolerance. -40°F starting temperature. All drivers are Underwriters Laboratories recognized.

Anchor Bolts: Four 3/8" x 10" + 2" zinc plated L-hooks complete with leveling nuts, washers, couplings, rigid pressed board template and black stainless steel bolts.

Finish: Super TGIC thermoset polyester powder coat paint, 2.5 mil nominal thickness, applied over a titanated zirconium conversion coating; 2500 hour salt spray test endurance rating. Standard colors are Black, Dark Bronze, Light Gray, Stealth Gray™, Platinum Silver, or White. Custom colors are available.

CAUTION: Fixtures must be grounded in accordance with national, state and/or local electrical codes. Failure to do so may result in serious personal injury.

CITY OF PORTLAND
APPROVED SITE PLAN
Subject to Dept. Conditions
Date of Approval: 11-22-2011 as amended 7-2-2012

Listings and Ratings

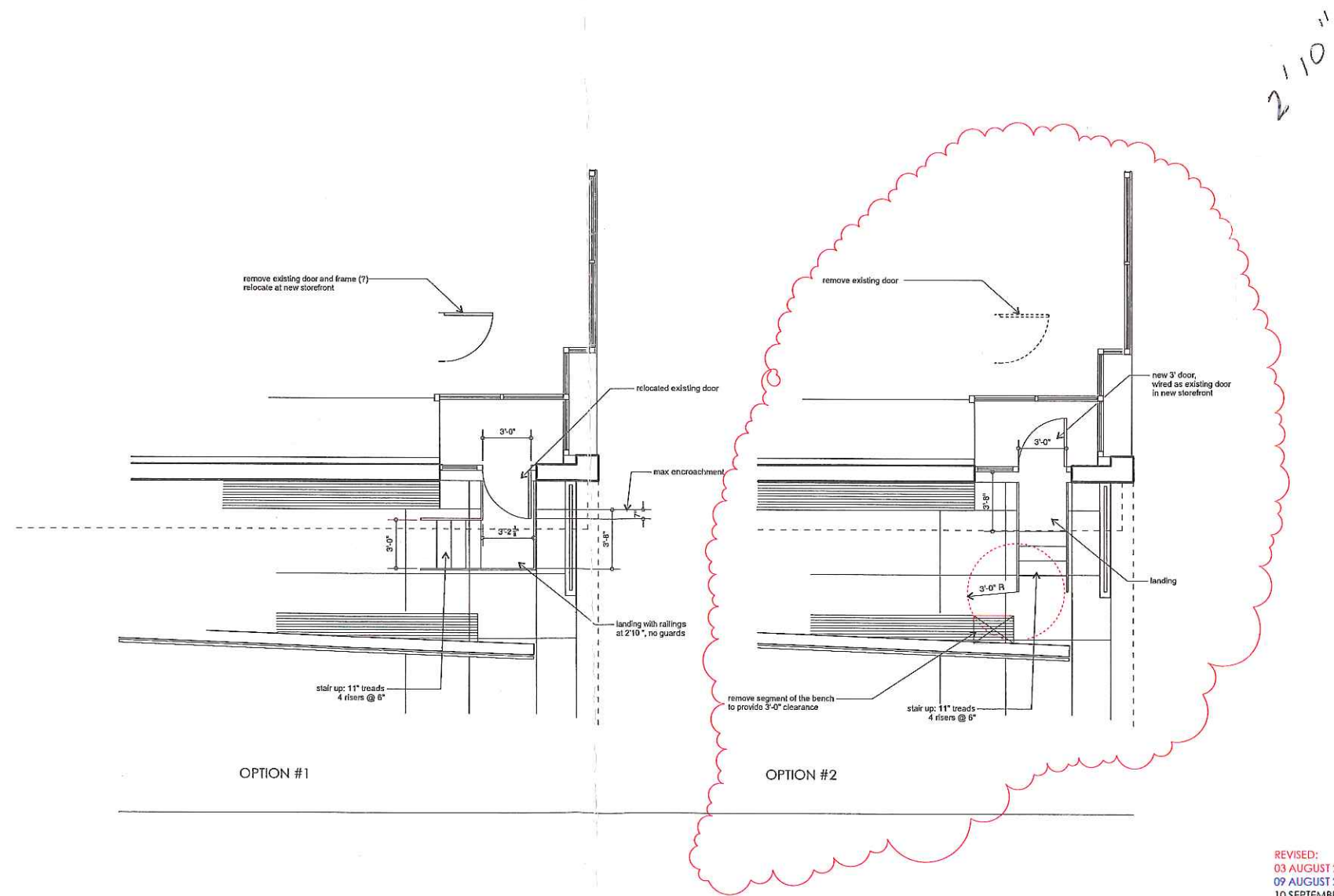
ETL ¹ to UL Standards 1598 & 8750	IP 46 Rated	CE	25C Ambient
FCO = (Full) Cut Off ²			

¹Suitable for wet locations.

²Dark Sky Legislation Compliant

KIM LIGHTING RESERVES THE RIGHT TO CHANGE SPECIFICATIONS WITHOUT NOTICE.

KIM LIGHTING RESERVES THE RIGHT TO CHANGE SPECIFICATIONS WITHOUT NOTICE.



CITY OF PORTLAND
 APPROVED SITE PLAN
 Subject to Dept. Conditions
 Date of Approval: 11-22-2011

as amended 7.2.2012
 and 12.19.2012

TEEN SHELTER
 38 PREBLE STREET

1ST LEVEL PLAN

Owner:
 Preble Street
 18 Portland Street
 Portland, Maine

Architect:
 James Sterling, AIA
 Architect
 142 High Street
 Portland, Maine

*the stairs into bldg
 option #2 approved*

A-1.1



REVISED:
 03 AUGUST 2012
 09 AUGUST 2012
 10 SEPTEMBER 2012
 04 DECEMBER 2012
 05 DECEMBER 2012
 07 DECEMBER 2012