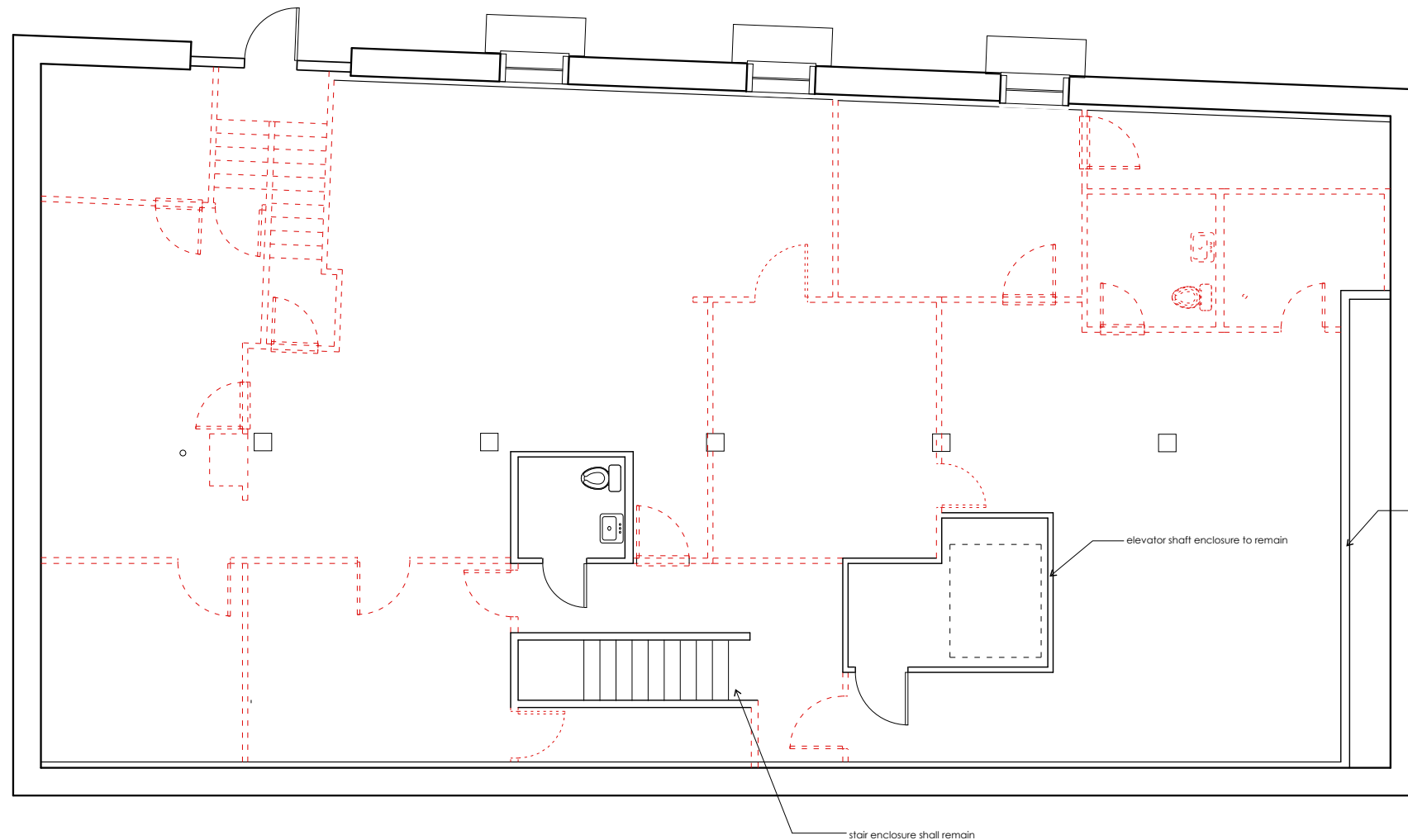


GENERAL NOTES

1. ALL FRAMING ON THE EXTERIOR WALLS SHALL REMAIN. REMOVE GWB ONLY AS NOTED.
2. REMOVE ALL GWB AND FRAMING AT COLUMNS.
3. REMOVE ALL GWB AND FRAMING ON PARTITIONS AS NOTED. - - - - -
4. REMOVE DROPPED CEILING.
5. REMOVE FLOOR FINISH TO CONCRETE SLAB.
6. REMOVE FLOOR FINISH TO CONCRETE SLAB.
7. VERIFY DUCT WORK WITH ROOF TOP SYSTEM BEFORE REMOVING.



**TEEN SHELTER
38 PREBLE STREET
DEMOLITION
BASEMENT PLAN**

Owner:
Preble Street
18 Portland Street
Portland, Maine 04104

Architect:
James Sterling, AIA
Architect
142 High Street
Portland, Maine

DA-1.0

1/18/12

