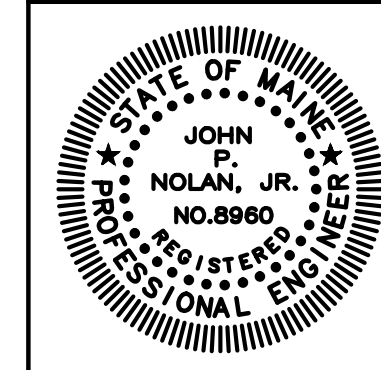


This document is owned by and the information contained in it is proprietary to Titan Mechanical Inc. By receipt hereof the holder agrees not to use the information, disclose it to any third party, nor reproduce this document without the prior written consent of Titan Mechanical Inc. and agrees to return this document forthwith upon request.

DATE	REVISIONS

**Titan Mechanical, Inc.**  
 Design-Build Engineering - Mechanical Contracting  
 P.O. Box 3927 / 41 Evergreen Drive  
 Portland, Maine 04104  
 Ph. (207) 878-5223 Fax. (207) 878-5235



TEEN SHELTER  
 CLIENT  
 38 PREBLE STREET  
 PROJECT  
 BASEMENT MECHANICAL PLAN  
 DRAWING TITLE

DATE: 3/20/2012

SCALE: 1/4" = 1'-0"

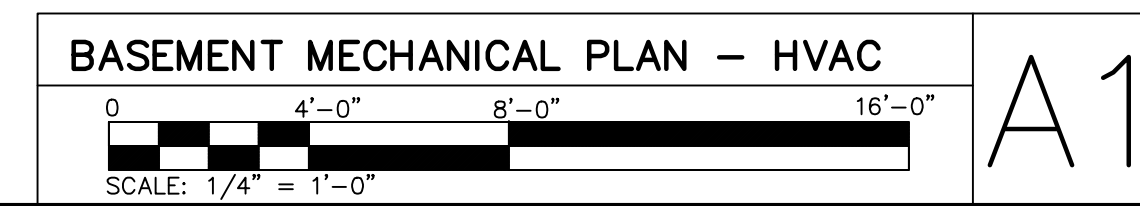
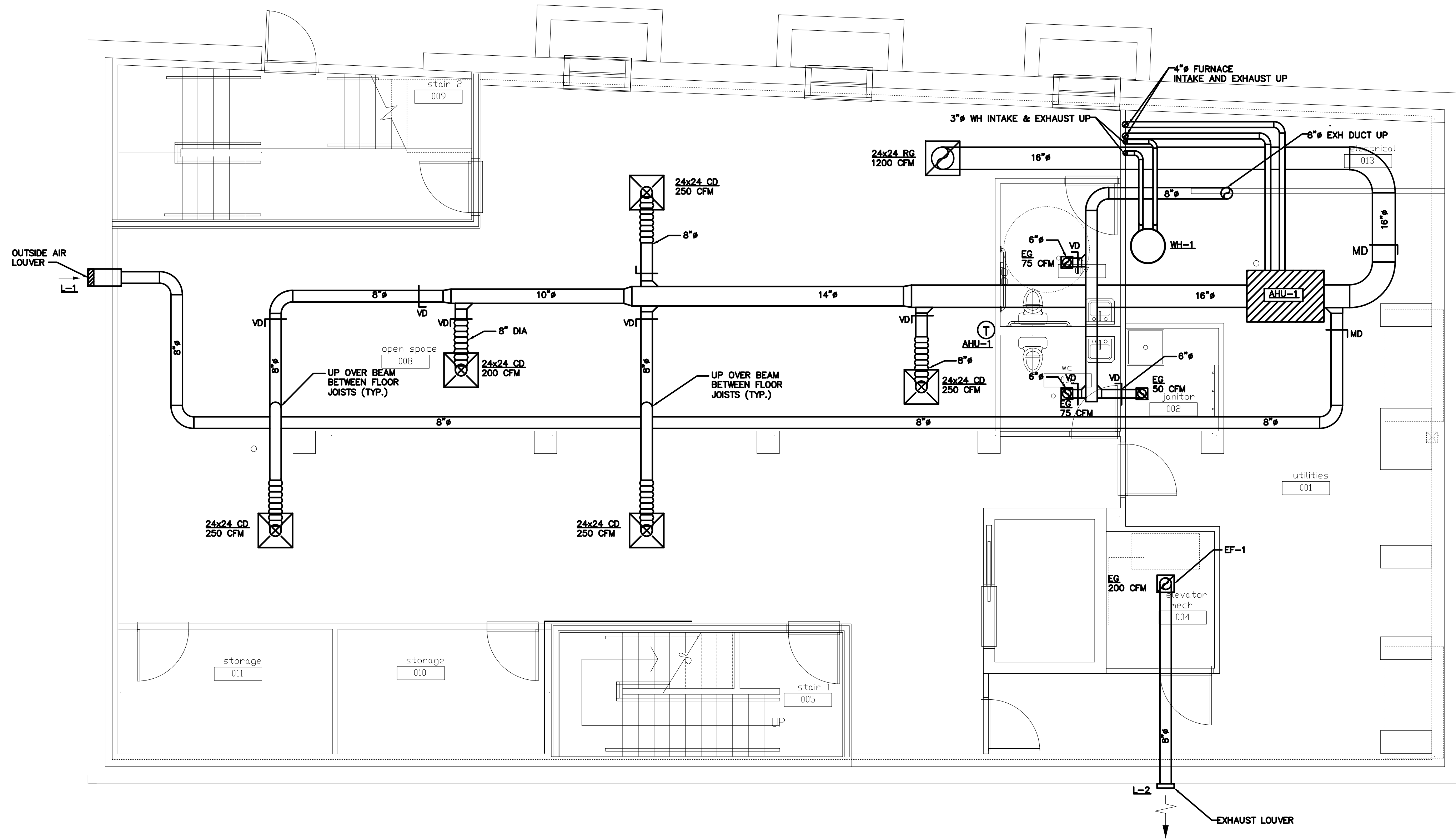
DRAWN BY: SGH

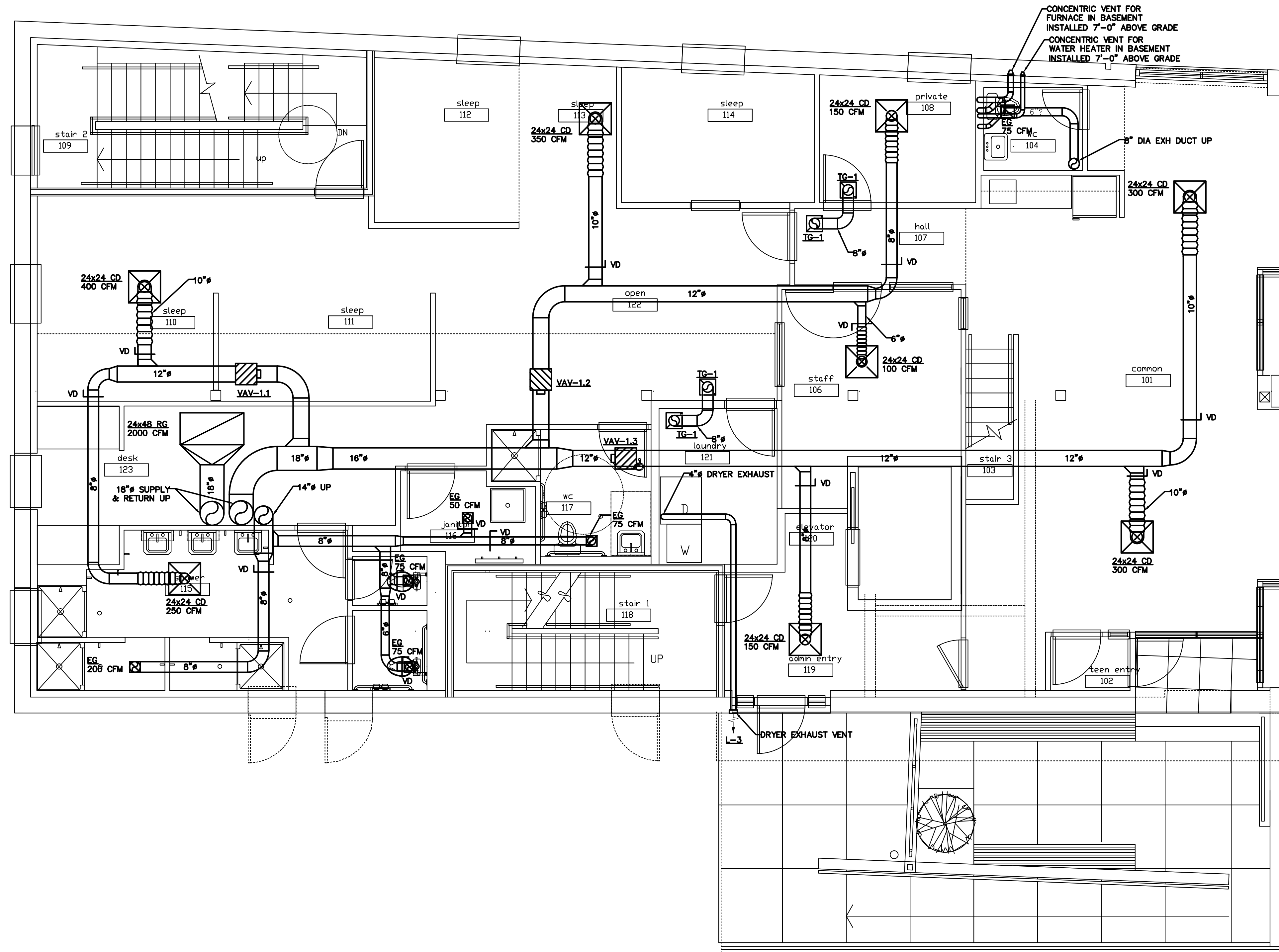
CHECKED BY: JPN

ISSUED FOR:  
 CONSTRUCTION

SHEET NUMBER

**M1.0**

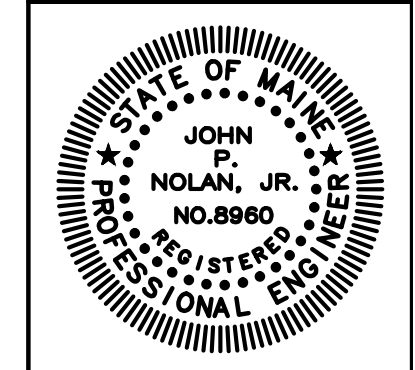




This document is owned by and the information contained in it is proprietary to Titan Mechanical Inc. By receipt hereof the holder agrees not to use the information, disclose it to any third party, nor reproduce this document without the prior written consent of Titan Mechanical Inc. and agrees to return this document forthwith upon request.

REVISIONS	DATE

**Titan Mechanical, Inc.**  
 Design-Build Engineering - Mechanical Contracting  
 P.O. Box 3927 / 41 Evergreen Drive  
 Portland, Maine 04104  
 Ph. (207) 878-5223 Fax. (207) 878-5235



TEEN SHELTER  
 CLIENT  
 38 PREBLE STREET  
 PROJECT  
 FIRST FLOOR MECHANICAL PLAN  
 DRAWING TITLE

DATE: 3/20/2012

SCALE: 1/4" = 1'-0"

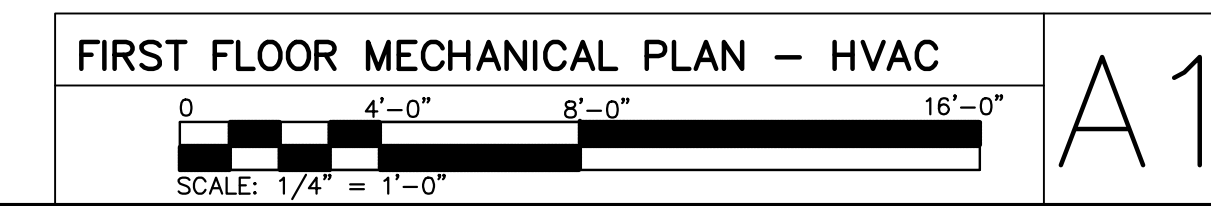
DRAWN BY: SGH

CHECKED BY: JPN

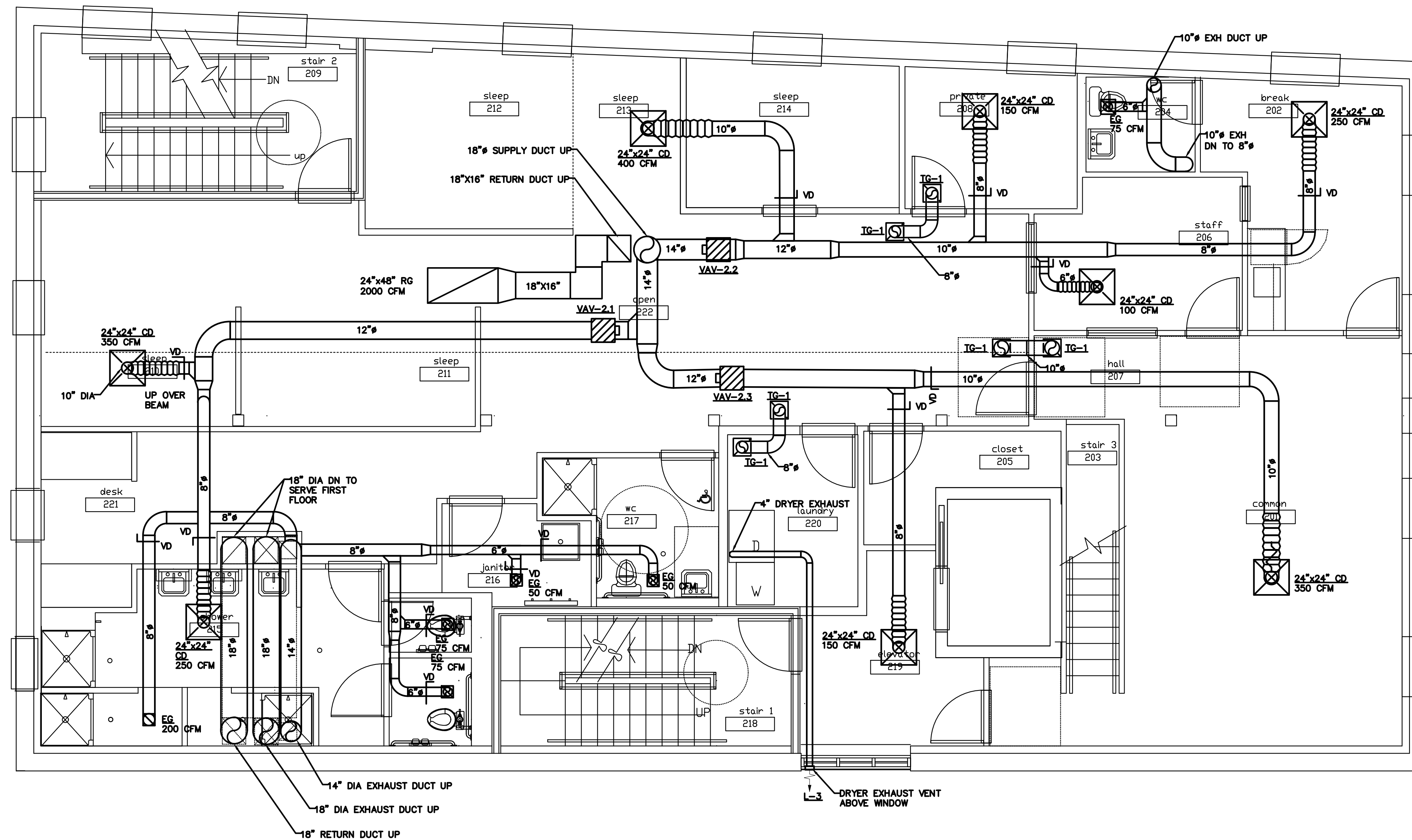
ISSUED FOR:  
 CONSTRUCTION

SHEET NUMBER

**M1.1**



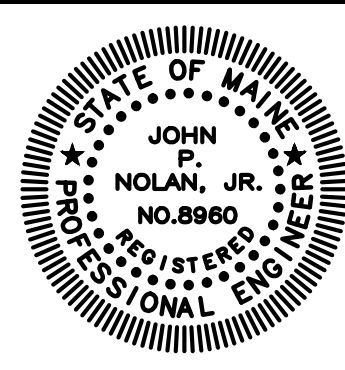
A1



This document is owned by and the information contained in it is proprietary to Titan Mechanical Inc. By receipt hereof the holder agrees not to use the information, disclose it to any third party, nor reproduce this document without the prior written consent of Titan Mechanical Inc. and agrees to return this document forthwith upon request.

DATE	REVISIONS

**Titan Mechanical, Inc.**  
 Design-Build Engineering - Mechanical Contracting  
 P.O. Box 3927 / 41 Evergreen Drive  
 Portland, Maine 04104  
 Ph. (207) 878-5223 Fax. (207) 878-5235

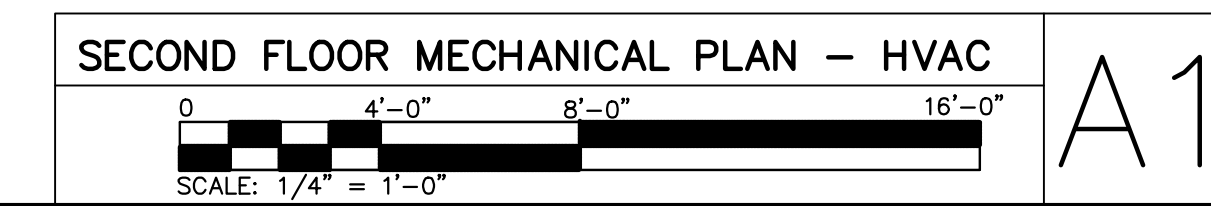


TEEN SHELTER  
 CLIENT  
 38 PREBLE STREET  
 PROJECT  
 SECOND FLOOR MECHANICAL PLAN  
 DRAWING TITLE

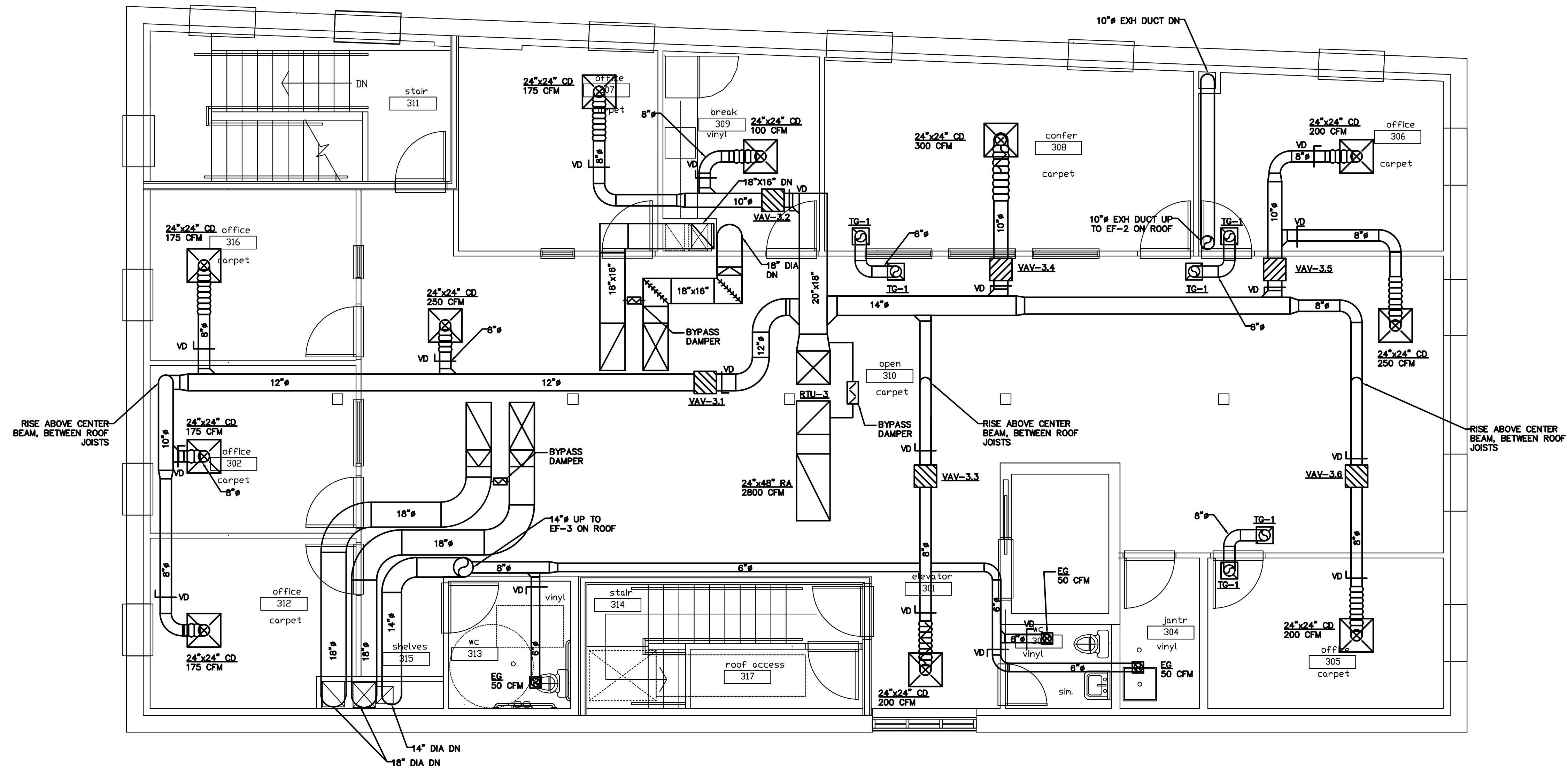
DATE: 3/20/2012  
 SCALE: 1/4" = 1'-0"  
 DRAWN BY: SGH  
 CHECKED BY: JPN  
 ISSUED FOR:  
 CONSTRUCTION

SHEET NUMBER

**M1.2**



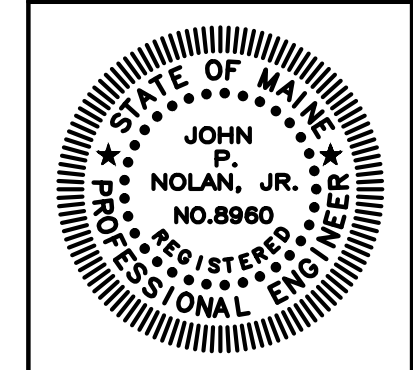
A1



This document is owned by and the information contained in it is proprietary to Titan Mechanical Inc. By receipt hereof the holder agrees not to use the information, disclose it to any third party, nor reproduce this document without the prior written consent of Titan Mechanical Inc. and agrees to return this document forthwith upon request.

REVISIONS	DATE

**Titan Mechanical, Inc.**  
 Design-Build Engineering - Mechanical Contracting  
 P.O. Box 3927 / 41 Evergreen Drive  
 Portland, Maine 04104  
 Ph. (207) 878-5223 Fax. (207) 878-5235



TEEN SHELTER  
 CLIENT  
 38 PREBLE STREET  
 PROJECT  
 THIRD FLOOR MECHANICAL PLAN  
 DRAWING TITLE

DATE: 3/20/2012

SCALE: 1/4" = 1'-0"

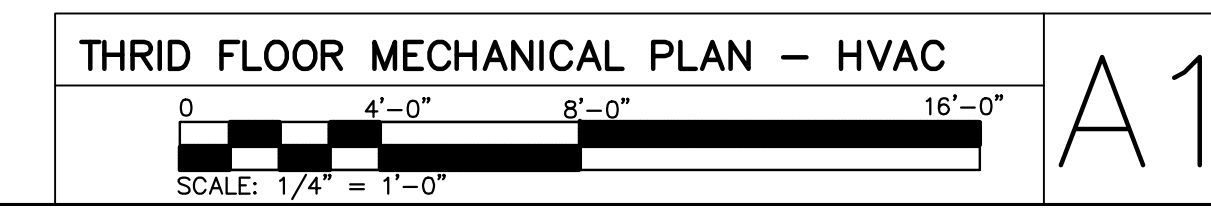
DRAWN BY: SGH

CHECKED BY: JPN

ISSUED FOR:  
 CONSTRUCTION

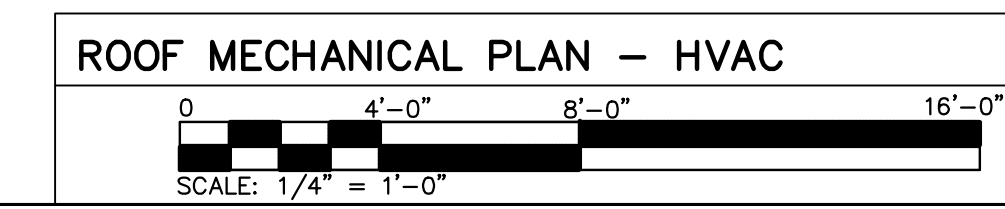
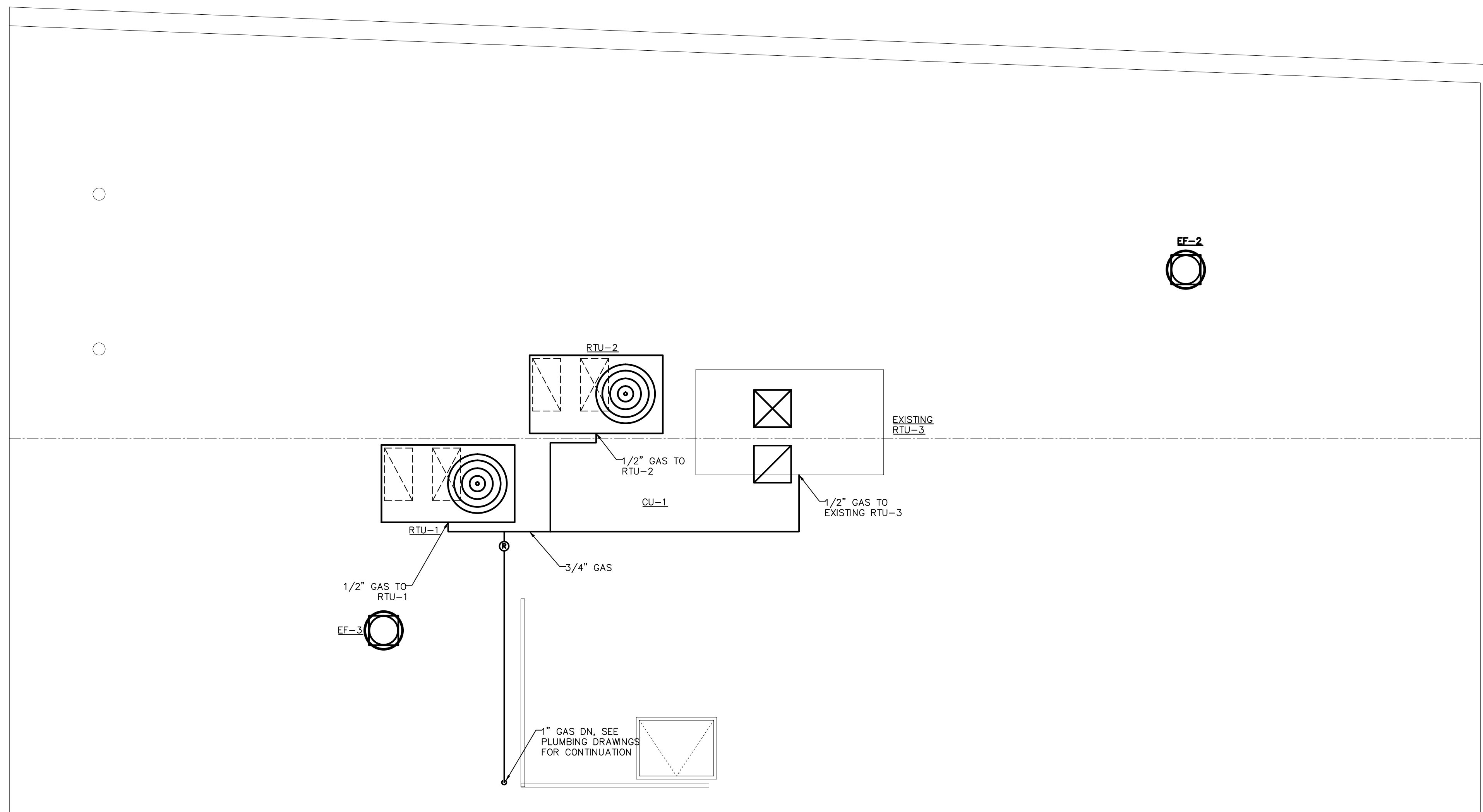
SHEET NUMBER

**M1.3**



A1

THRID FLOOR MECHANICAL PLAN - HVAC

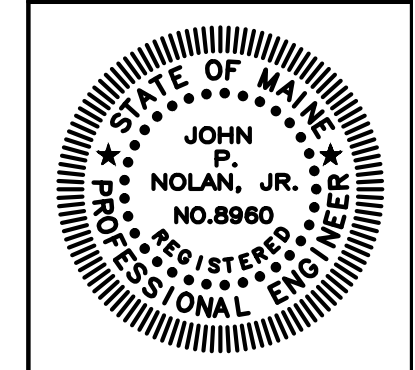


A1

This document is owned by and the information contained in it is proprietary to Titan Mechanical Inc. By receipt hereof the holder agrees not to use the information, disclose it to any third party, nor reproduce this document without the prior written consent of Titan Mechanical Inc. and agrees to return this document forthwith upon request.

REVISIONS	DATE

**Titan Mechanical, Inc.**  
 Design-Build Engineering - Mechanical Contracting  
 P.O. Box 3927 / 41 Evergreen Drive  
 Portland, Maine 04104  
 Ph. (207) 878-5223 Fax. (207) 878-5235



TEEN SHELTER  
CLIENT  
 38 PREBLE STREET  
PROJECT  
 ROOF MECHANICAL PLAN  
DRAWING TITLE

DATE: 3/20/2012

SCALE: 1/4" = 1'-0"

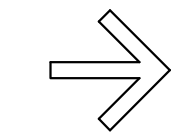
DRAWN BY: SGH

CHECKED BY: JPN

ISSUED FOR:  
 CONSTRUCTION

SHEET NUMBER

**M1.4**

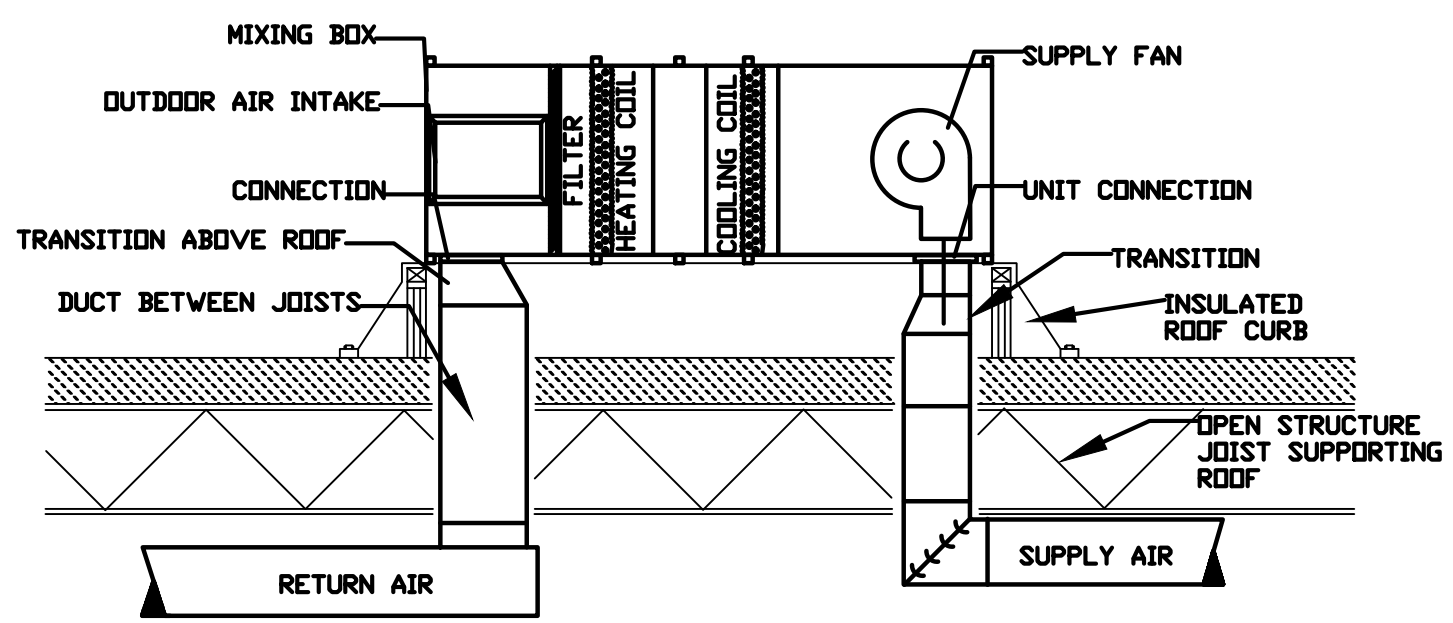


ROOF-TOP UNIT SCHEDULE																					
TAG	AREA SERVED	V/HZ/PH	MOCP (AMPS)	MCA	WEIGHT (LBS)	CFM	EXT. SP.	% O.A.	HEATING					COOLING					MODEL	REMARKS	
									FUEL	EAT	LAT	INPUT (MBH)	OUTPUT (MBH)	EDB	EWB	LWB	LDB	TONS			EER/SEER
RTU-1	FIRST FLOOR	208/3/60	45	30	-	2000	0.5	-	NG	-	-	80	64	80	67	57	59	5.0	13 SEER	TRANE YHC060F3RMA	-
RTU-2	SECOND FLOOR	208/3/60	45	30	-	2000	0.5	-	NG	-	-	80	64	80	67	57	59	5.0	13 SEER	TRANE YHC060F3RMA	-
RTU-3	THIRD FLOOR	208/3/60	40.1	45	-	3000	0.5	-	NG	-	-	120	96	80	67	57	59	7.5	10.1 EER	-	EXISTING

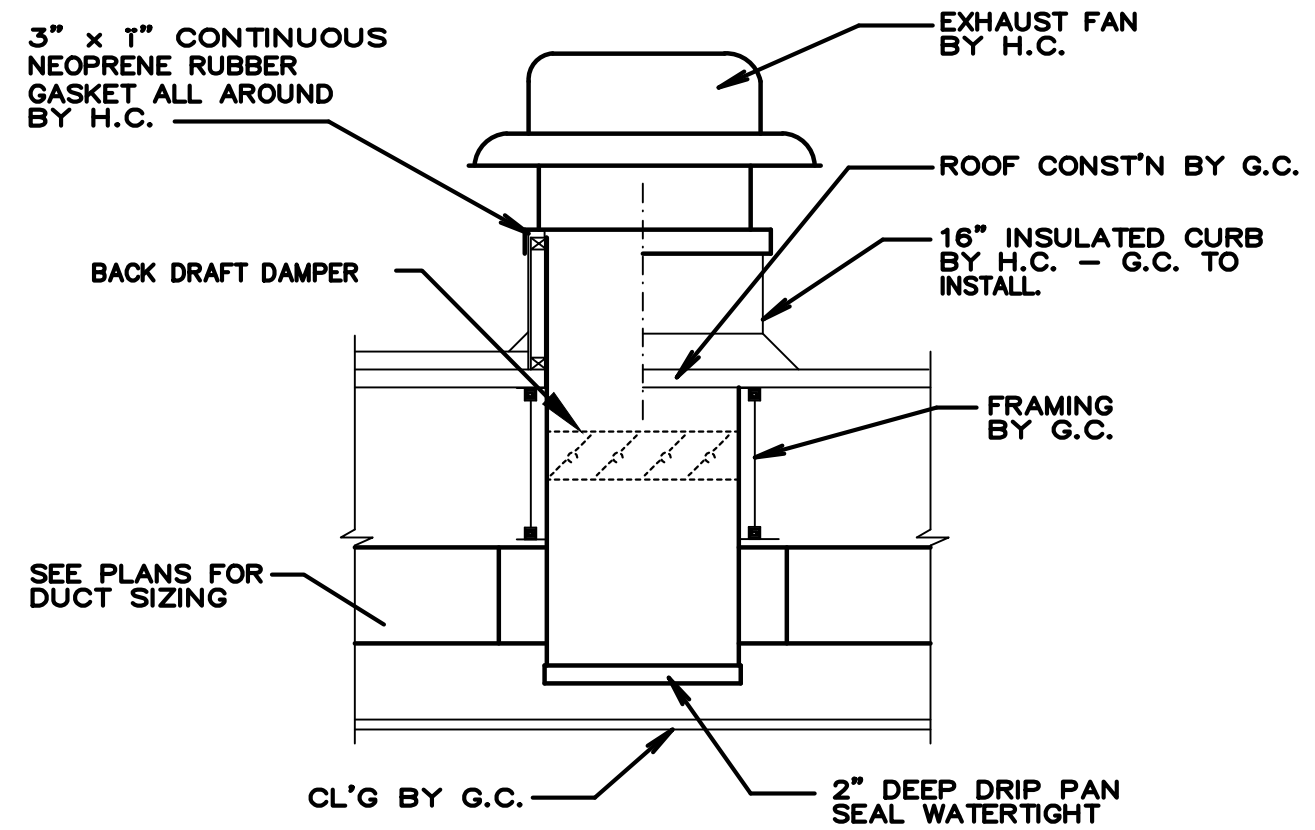
SPLIT SYSTEM AIRHANDLER/CONDENSER SCHEDULE																					
GENERAL			AIR-HANDLER								CONDENSER										
TAG	AREA SERVED	ELECTRIC	CFM	EXT. SP.	RPM	FAN HP	% O.A.	HEATING			COOLING				COMPRESSOR(S)			FANS(S)		MODEL	
								EAT	LAT	MBH	EDB	EWB	LWB	LDB	MBH	QUAN	RLA	LRA	QUAN		FLA
AHU-3/CU-3	BASEMENT	208/60/3	1200	0.7	-	1/2	12	-	-	75	80	67	57	59	36	1	16.0	-	1	-	TRANE AHU # BCH036A2A1AU4F000000B0100 TRANE CU # 2TTA3036A300

\* SINGLE POINT ELECTRICAL CONNECTION TO CONDENSER ON ROOF.

VAV BOX SCHEDULE					
TAG	SERVES	MAX CFM	MIN CFM	MODEL SIZE	REMARKS
VAV-1.1	RM 110, 115 & 123	650	240	TRANE VCCF-6	RTU-1
VAV-1.2	RM 106, 108, 112, 113 &	114 600	140	TRANE VCCF-6	RTU-1
VAV-1.3	RM 101 & 119	750	115	TRANE VCCF-6	RTU-1
VAV-2.1	RM 210, 211, 215 & 221	600	115	TRANE VCCF-6	RTU-2
VAV-2.2	RM 202, 206, 208 & 214	900	140	TRANE VCCF-6	RTU-2
VAV-2.3	RM 201 & 219	500	115	TRANE VCCF-6	RTU-2
VAV-3.1	RM 302, 310, 312 & 316	775	115	TRANE VCCF-6	RTU-3
VAV-3.2	RM 307 & 309	275	140	TRANE VCCF-6	RTU-3
VAV-3.3	RM 301	275	115	TRANE VCCF-6	RTU-3
VAV-3.4	RM 308	300	140	TRANE VCCF-6	RTU-3
VAV-3.5	RM 306	200	140	TRANE VCCF-6	RTU-3
VAV-3.6	RM 310	250	115	TRANE VCCF-6	RTU-3



TYPICAL ROOF TOP UNIT  
NO SCALE



ROOF EXHAUST FAN  
NO SCALE

FAN SCHEDULE											
TAG	SERVES	CFM	SP (W.G.)	V/PH/Hz	HP	RPM	LXWXH (INCHES)	WGHT (POUNDS)	MOD. NO.	MANUFACTURER	REMARKS
EF-1	ELEV MACHINE ROOM	200	0.1	120/1/60	-	2700	NA	-	FG6	FANTECH	IN LINE
EF-2	RESTROOMS	300	0.125	120/1/60	1/10	1550	NA	-	PRN-80	ACME	W/SPEED CONTROL
EF-3	RESTROOMS, JAN CL	1,000	0.125	120/1/60	1/4	1300	NA	-	PRN-118E	ACME	W/SPEED CONTROL

GRILLES, REGISTERS, & DIFFUSER SCHEDULE						
TAG	NECK INCHES	FACE SIZE INCHES	MAX CFM	SP W.G.	THROW FEET	REMARKS
SD-1	6"φ	24x24	100	0.05	-	LAY-IN
SD-2	8"φ	24x24	250	0.05	-	LAY-IN
SD-3	10"φ	24x24	400	0.05	-	LAY-IN
RG-1	-	24x24	1200	0.05	-	LAY-IN
RG-2	-	24x48	2000	0.05	-	LAY-IN
RA-1	-	24x48	2800	0.05	-	LAY-IN

NOTES: ALL GRD'S MAX NC=30  
ALL UNITS SHALL BE ANEMOSTAT OR EQUAL BY KRUEGAR  
ALL SD'S SHALL HAVE EQUALIZING VANES, FLAT WHITE FINISH, AND BE 4-WAY BLOW WITH DIRECTIONAL TABS.

LOUVER SCHEDULE								
TAG	SERVES	INTAKE OR EXHAUST	CFM	FREE AREA (FT <sup>2</sup> )	LOUVER SIZE W x H (INCHES)	WALL OPENING (INCHES)	MODEL NO.	REMARKS
L-1	AHU-1	INTAKE	200	-	12" x 12"	-	GREENHECK EAL	EXTRUDED AL W/INSECT SCR
L-2	EF-1	EXHAUST	200	-	15" x 7"	-	GREENHECK BVE	BRICK VENT W/ B.D.D.
L-3	DRYERS	EXHAUST	-	-	8" x 8"	-	GREENHECK WC	HOODED WALL CAP

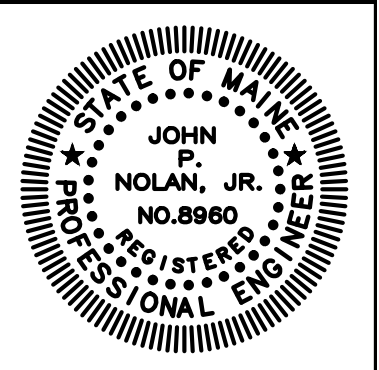
NOTES: COLOR TBD BY ARCHITECT

- GENERAL NOTES
- PROVIDE DUCTWORK IN ACCORDANCE WITH NFPA 90A AND LOCAL CODES AND STANDARDS.
  - PROVIDE DUCTWORK IN ACCORDANCE WITH SMACNA STANDARDS (SECOND EDITION - 1995) "STD" PRESSURE CLASSIFICATION, SEAL CLASS "C", USING GALVANIZED SHEET METAL.
  - PROVIDE BUTTERFLY BALANCING DAMPERS (BD) AT ALL RIGID - TO FLEXIBLE DUCT CONNECTIONS UNLESS REGISTER DAMPERS ARE REQUIRED. PROVIDE ADDITIONAL BDS AS INDICATED.
  - INSTALL FLEX DUCT IN MAXIMUM 5 FOOT LENGTHS, FULLY EXTENDED, PROPERLY SUPPORTED, WITHOUT CRIMPS.
  - DUCT ELBOWS SHALL BE STANDARD RADIUS TYPE OR SQUARE WITH SINGLE TURNING VANES.
  - BRANCH TAKEOFF FITTINGS SHALL HAVE 45° ENTRY THROAT.
  - PROVIDE 1" THICK ACOUSTICAL LINING WHERE INDICATED.
  - INSTALL FIRE DAMPERS IN SLEEVES IN ACCORDANCE WITH MANUFACTURERS TESTED REQUIREMENTS.
  - PROVIDE TRANSFER DUCT ASSEMBLIES CONSISTING OF (2) TG-1 GRILLES CONNECTED WITH AN 8" DIAM. FLEX DUCT TO TRANSFER AIR OUT OF ROOMS TO ADJACENT CORRIDOR WHERE SUPPLY AIR EXCEEDS 75 CFM.

This document is owned by and the information contained in it is proprietary to Titan Mechanical Inc. By receipt hereof the holder agrees not to use the information, disclose it to any third party, nor reproduce this document without the prior written consent of Titan Mechanical Inc. and agrees to return this document forthwith upon request.

DATE	REVISIONS

**Titan Mechanical, Inc.**  
Design-Build Engineering - Mechanical Contracting  
P.O. Box 3927 / 41 Evergreen Drive  
Portland, Maine 04104  
Ph. (207) 878-5223 Fax. (207) 878-5235



TEEN SHELTER  
CLIENT  
38 PREBLE STREET  
PROJECT  
MECHANICAL SCHEDULES  
DRAWING TITLE

DATE: 3/20/2012

SCALE: 1/4" = 1'-0"

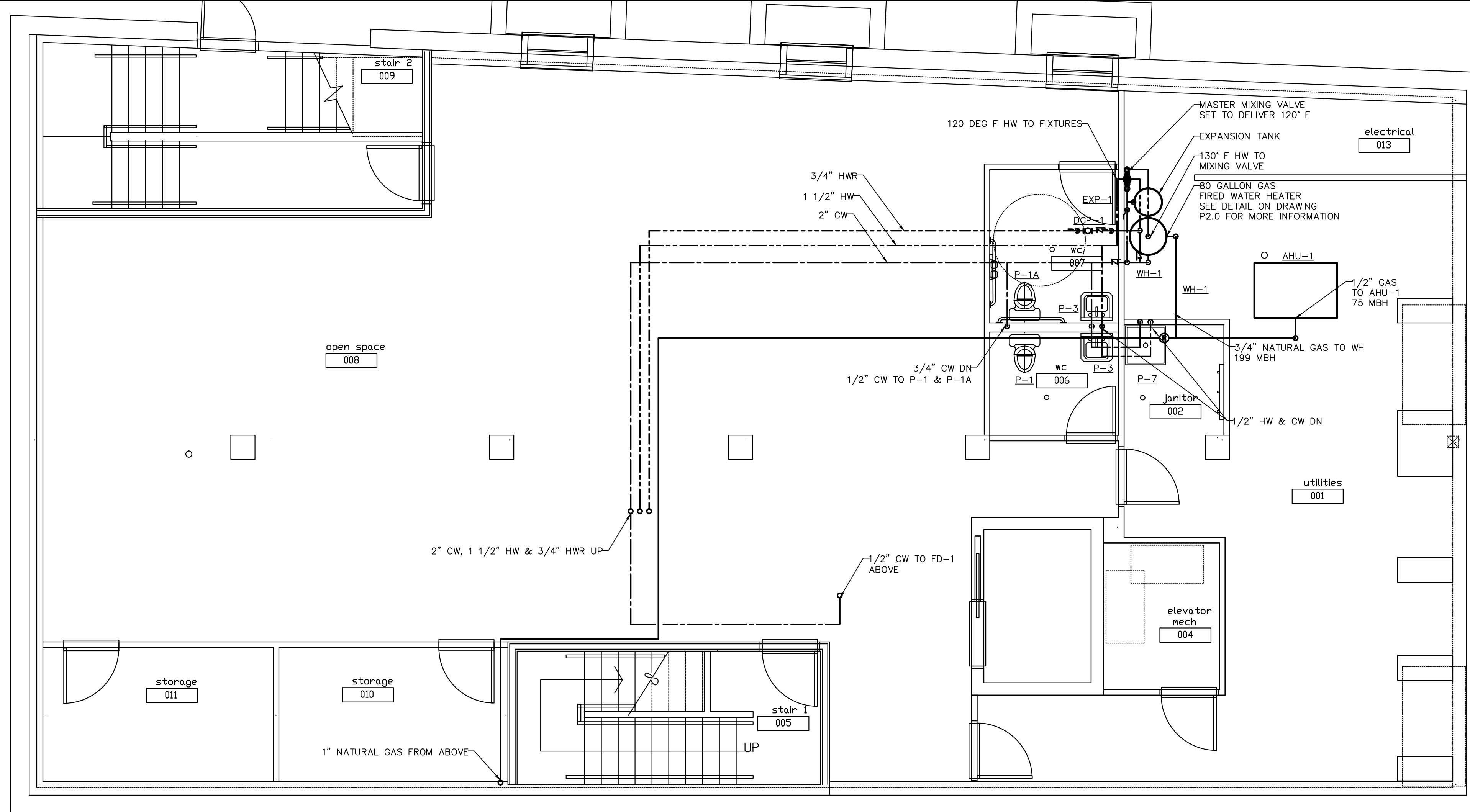
DRAWN BY: SGH

CHECKED BY: JPN

ISSUED FOR: CONSTRUCTION

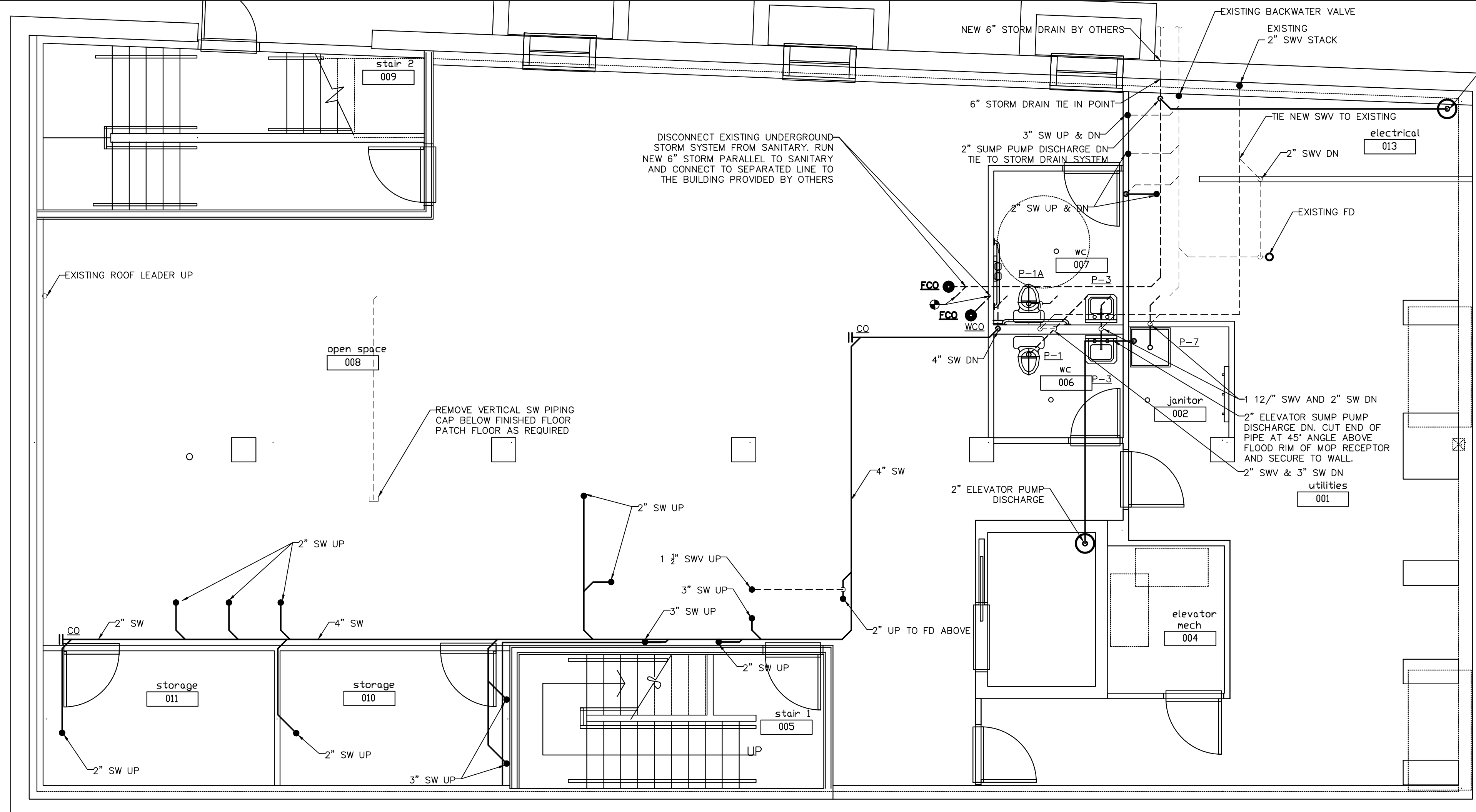
SHEET NUMBER

**M2.0**



**BASEMENT PLUMBING PLAN - SUPPLY**

B1



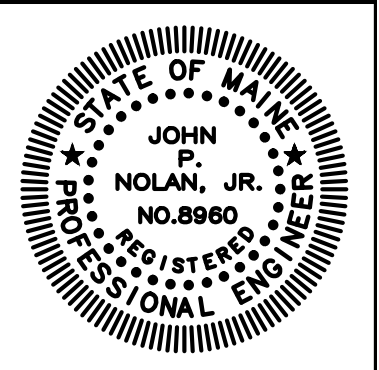
**BASEMENT PLUMBING PLAN - DRAINAGE**

A1

This document is owned by and the information contained in it is proprietary to Titan Mechanical, Inc. By receipt hereof the holder agrees not to use the information, disclose it to any third party, nor reproduce this document without the prior written consent of Titan Mechanical, Inc. and agrees to return this document forthwith upon request.

DATE	REVISIONS

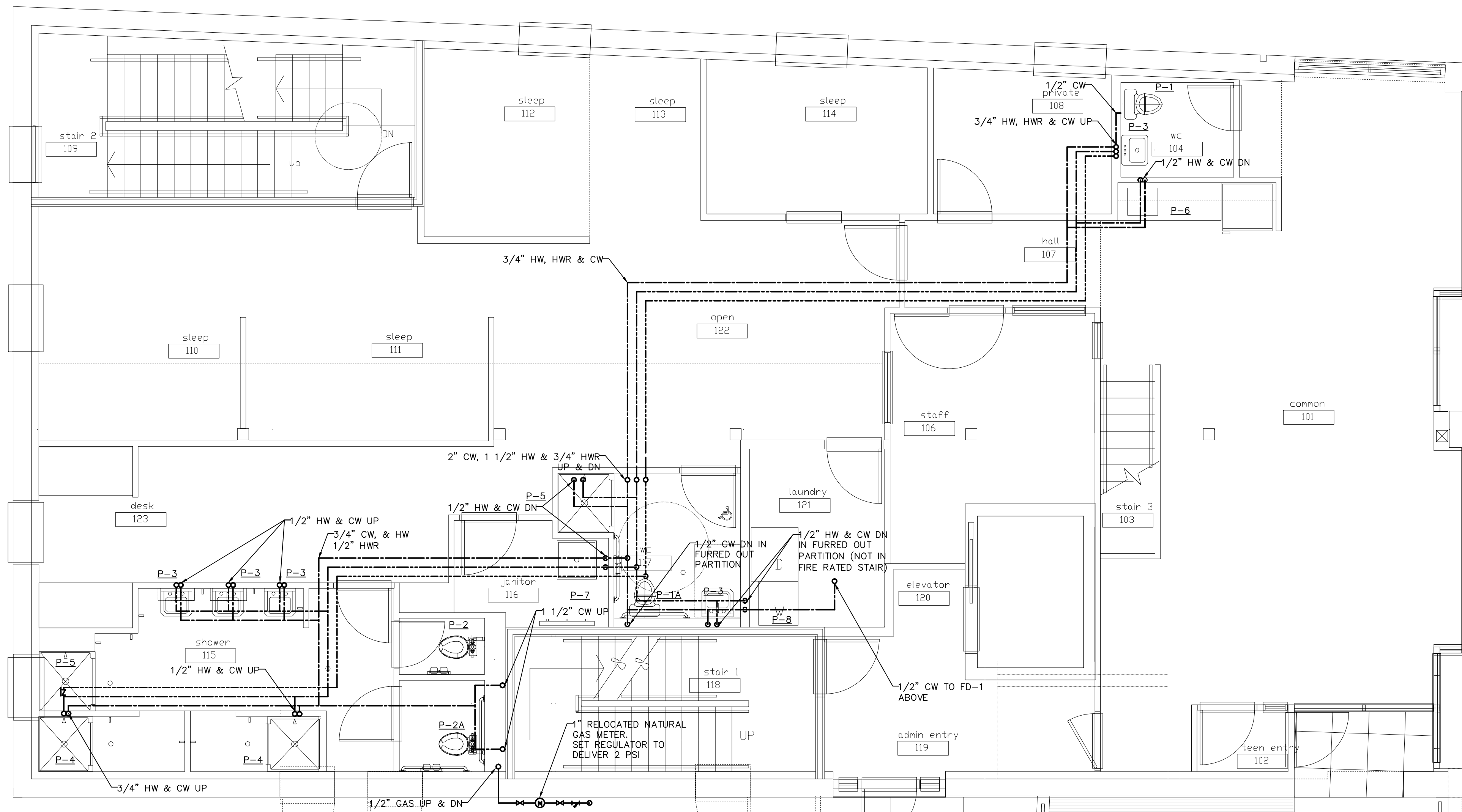
**Titan Mechanical, Inc.**  
 Design/Build Engineering - Mechanical Contracting  
 P.O. Box 3927 / 41 Evergreen Drive  
 Portland, Maine 04104  
 Ph. (207) 878-5223 Fax. (207) 878-5235



TEEN SHELTER  
 CLIENT  
 38 PREBLE STREET  
 PROJECT  
 BASEMENT PLUMBING PLAN  
 DRAWING TITLE

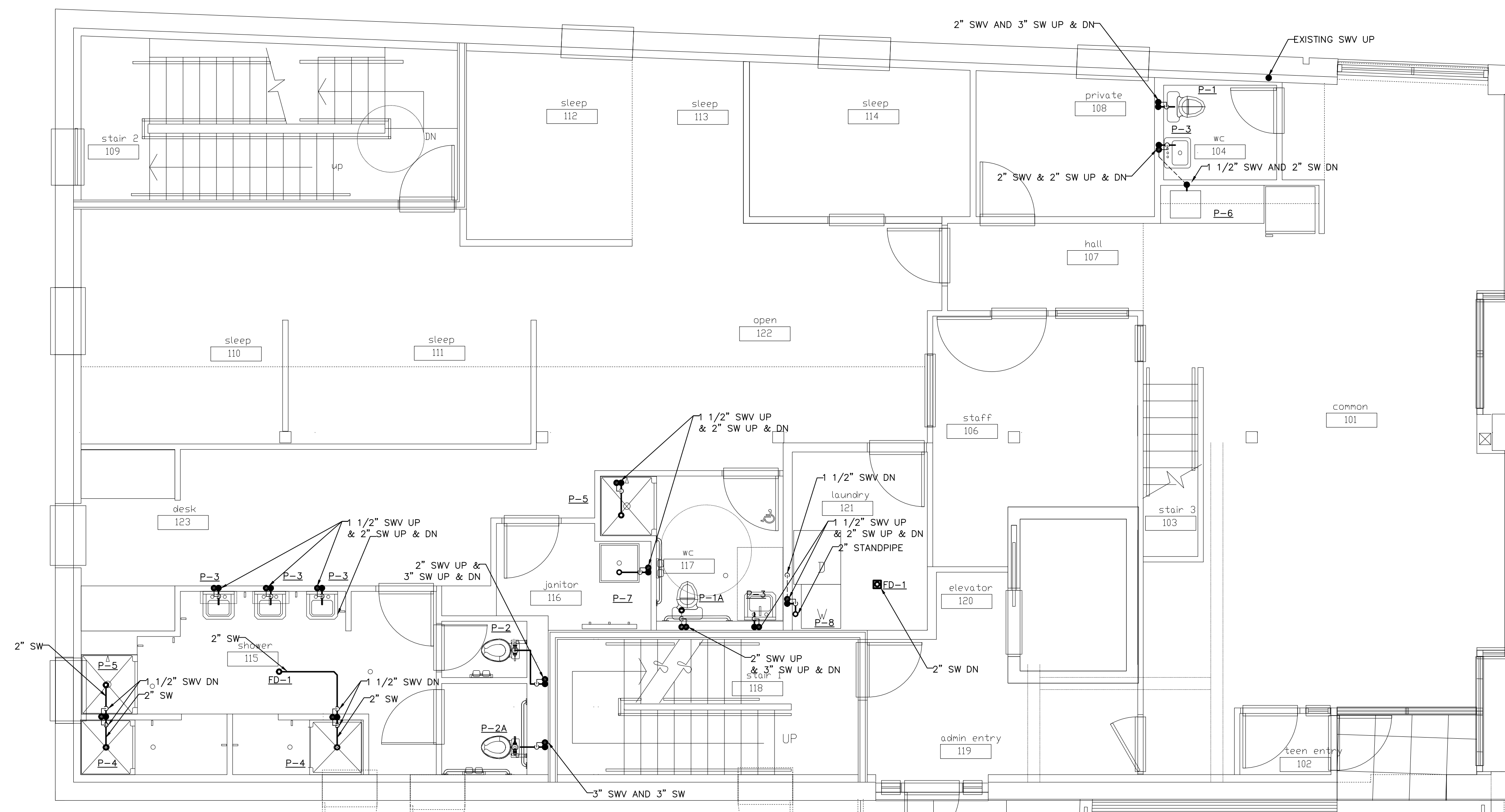
DATE:  
 SCALE:  
 DRAWN BY: SGH  
 CHECKED BY: JPN  
 ISSUED FOR:

SHEET NUMBER  
**P1.0**



FIRST FLOOR PLUMBING PLAN - SUPPLY  
 0 4'-0" 8'-0" 16'-0"  
 SCALE: 1/4" = 1'-0"

B1



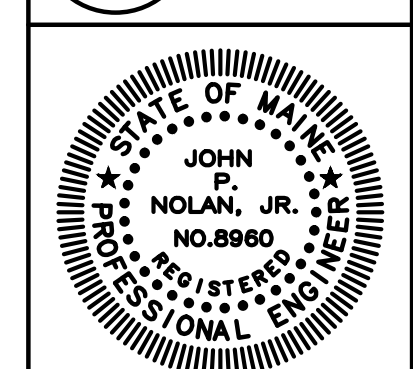
FIRST FLOOR PLUMBING PLAN - DRAINAGE  
 0 4'-0" 8'-0" 16'-0"  
 SCALE: 1/4" = 1'-0"

A1

This document is owned by and the information contained in it is proprietary to Titan Mechanical Inc. By receipt hereof the holder agrees not to use the information, disclose it to any third party, nor reproduce this document without the prior written consent of Titan Mechanical Inc. and agrees to return this document forthwith upon request.

DATE	REVISIONS

**Titan Mechanical, Inc.**  
 Design-Build Engineering - Mechanical Contracting  
 P.O. Box 3927 / 41 Evergreen Drive  
 Portland, Maine 04104  
 Ph. (207) 878-5223 Fax. (207) 878-5235

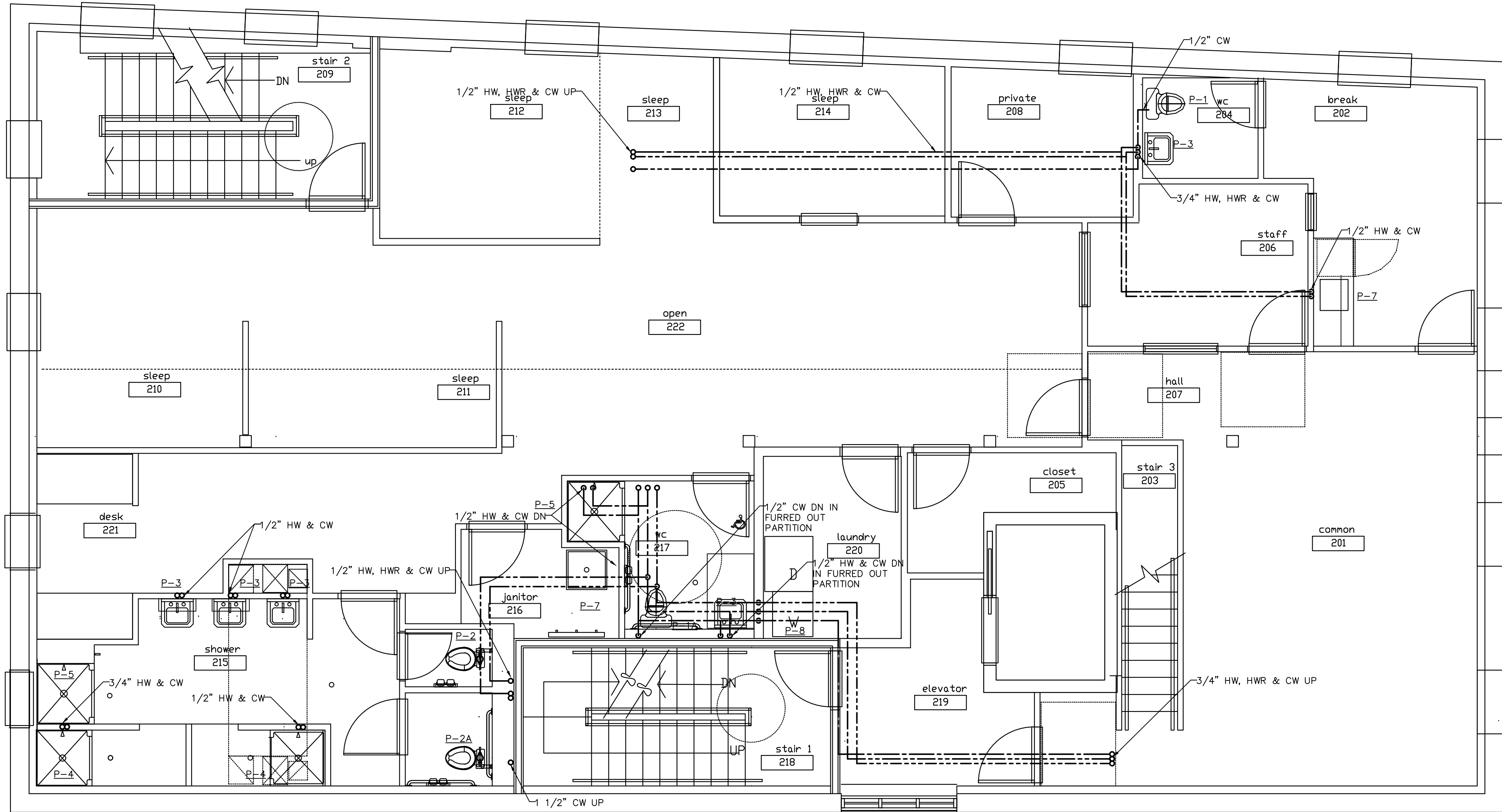


TEEN SHELTER  
 CLIENT  
 38 PREBLE STREET  
 PROJECT  
 FIRST FLOOR PLUMBING PLAN  
 DRAWING TITLE

DATE: 3/20/2012  
 SCALE: 1/4" = 1'-0"  
 DRAWN BY: SGH  
 CHECKED BY: JPN  
 ISSUED FOR: CONSTRUCTION

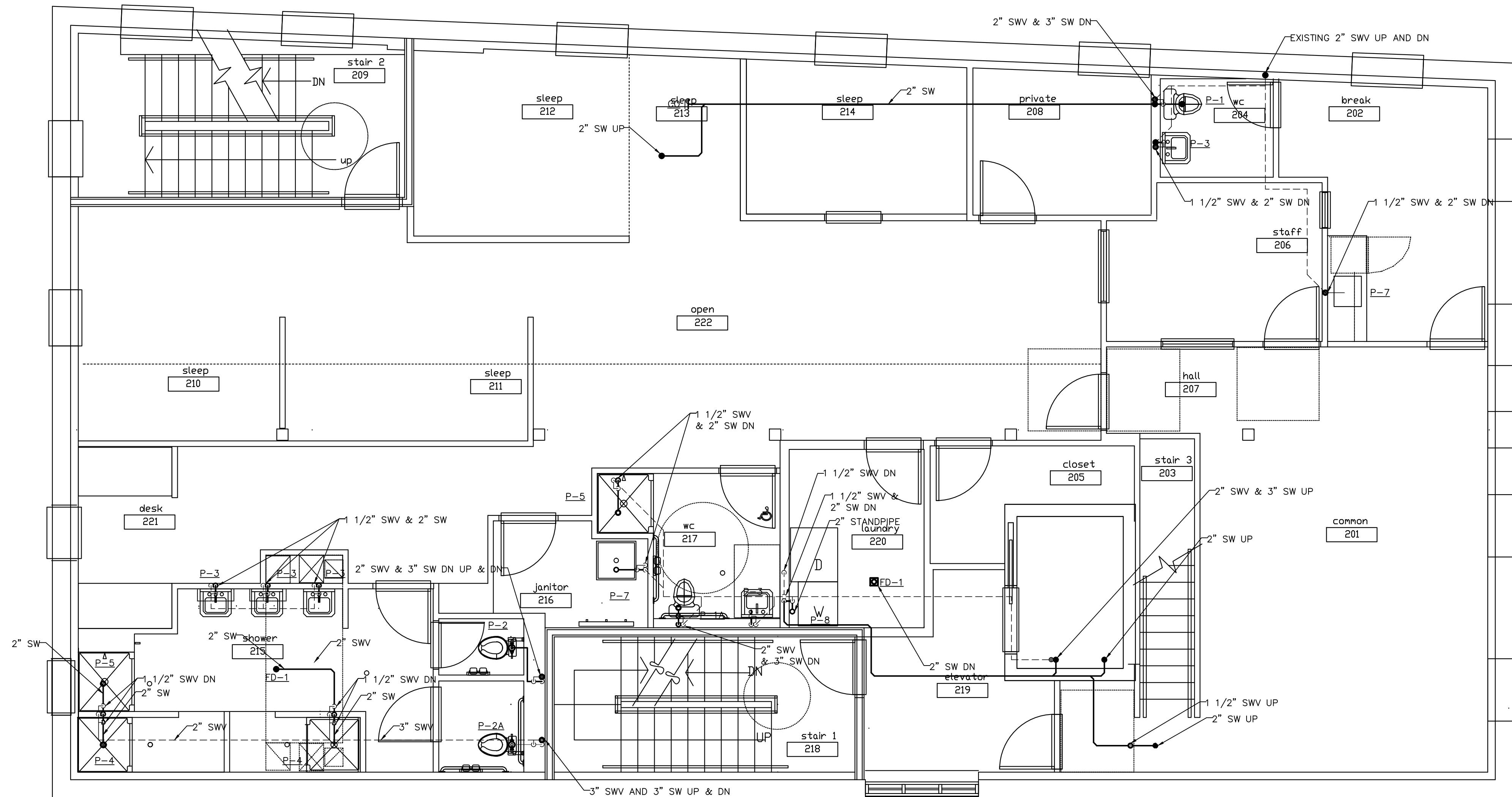
SHEET NUMBER  
**P1.1**





FIRST FLOOR PLUMBING PLAN - SUPPLY

B1



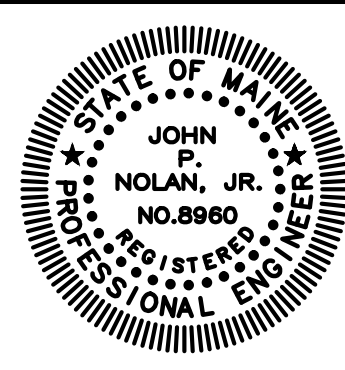
SECOND FLOOR PLUMBING PLAN - DRAINAGE

A1

This document is owned by and the information contained in it is proprietary to Titan Mechanical Inc. By receipt hereof the holder agrees not to use the information, disclose it to any third party, nor reproduce this document without the prior written consent of Titan Mechanical Inc. and agrees to return this document forthwith upon request.

DATE	REVISIONS

**Titan Mechanical, Inc.**  
 Design-Build Engineering - Mechanical Contracting  
 P.O. Box 3927 / 41 Evergreen Drive  
 Portland, Maine 04104  
 Ph. (207) 878-5223 Fax. (207) 878-5235



TEEN SHELTER  
 CLIENT  
**38 PREBLE STREET**  
 PROJECT  
**SECOND FLOOR PLUMBING PLAN**  
 DRAWING TITLE

DATE: 3/20/2012

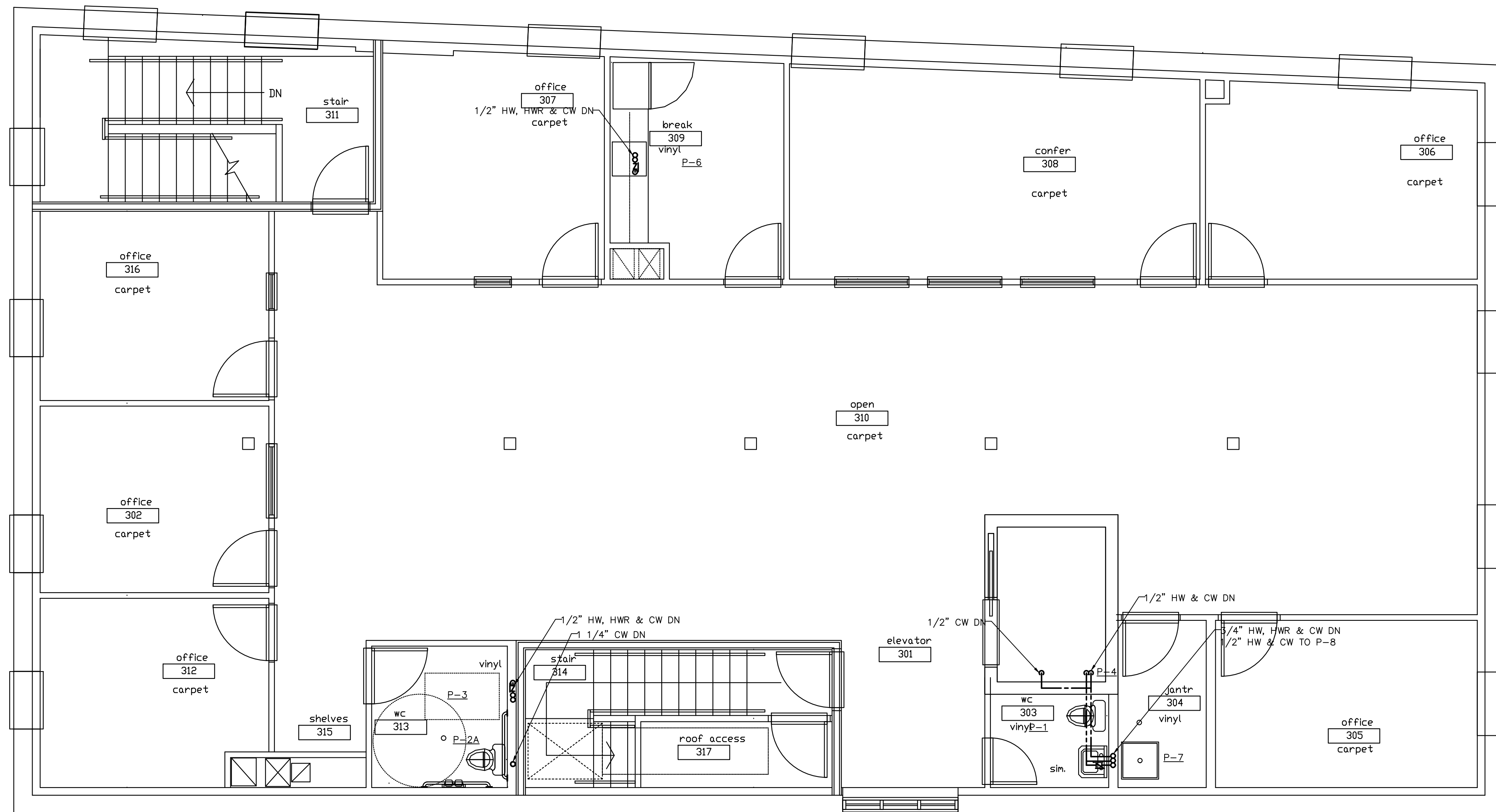
SCALE: 1/4" = 1'-0"

DRAWN BY: SGH

CHECKED BY: JPN

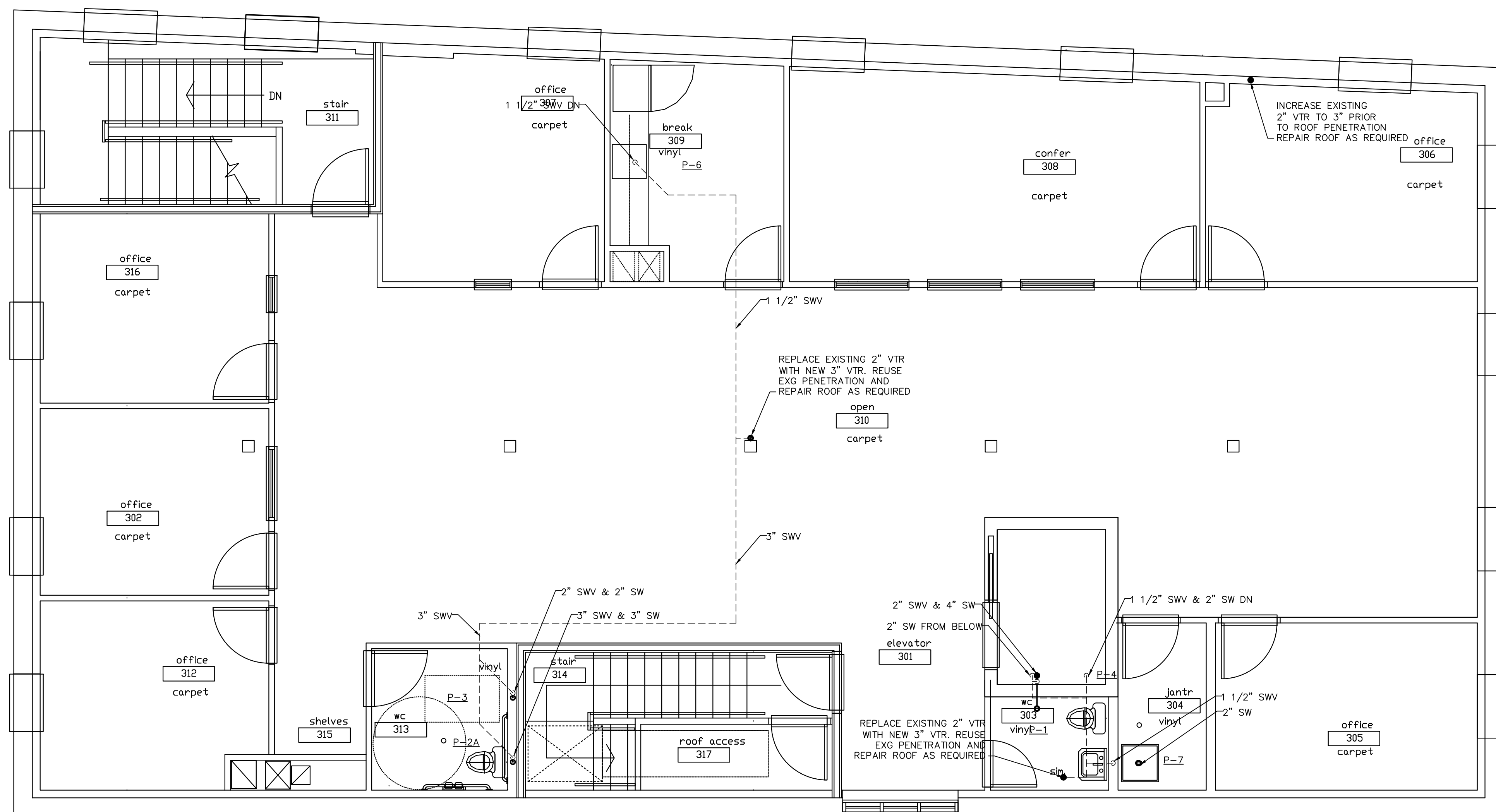
ISSUED FOR: CONSTRUCTION

SHEET NUMBER



THIRD FLOOR PLUMBING PLAN - SUPPLY  
 0 4'-0" 8'-0" 16'-0"  
 SCALE: 1/4" = 1'-0"

B1



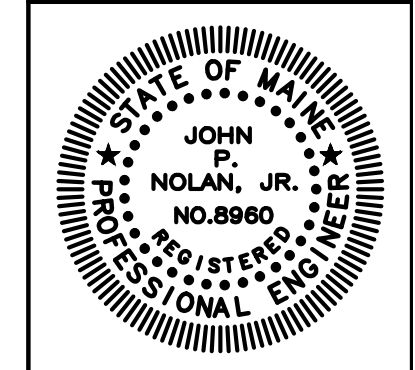
THIRD FLOOR PLUMBING PLAN - DRAINAGE  
 0 4'-0" 8'-0" 16'-0"  
 SCALE: 1/4" = 1'-0"

A1

This document is owned by and the information contained in it is proprietary to Titan Mechanical Inc. By receipt hereof the holder agrees not to use the information, disclose it to any third party, nor reproduce this document without the prior written consent of Titan Mechanical Inc. and agrees to return this document forthwith upon request.

DATE	REVISIONS

**Titan Mechanical, Inc.**  
 Design-Build Engineering - Mechanical Contracting  
 P.O. Box 3927 / 41 Evergreen Drive  
 Portland, Maine 04104  
 Ph. (207) 878-5223 Fax. (207) 878-5235



TEEN SHELTER  
 CLIENT  
 38 PREBLE STREET  
 PROJECT  
 THIRD FLOOR PLUMBING PLAN  
 DRAWING TITLE

DATE: 3/20/2012

SCALE: 1/4" = 1'-0"

DRAWN BY: SGH

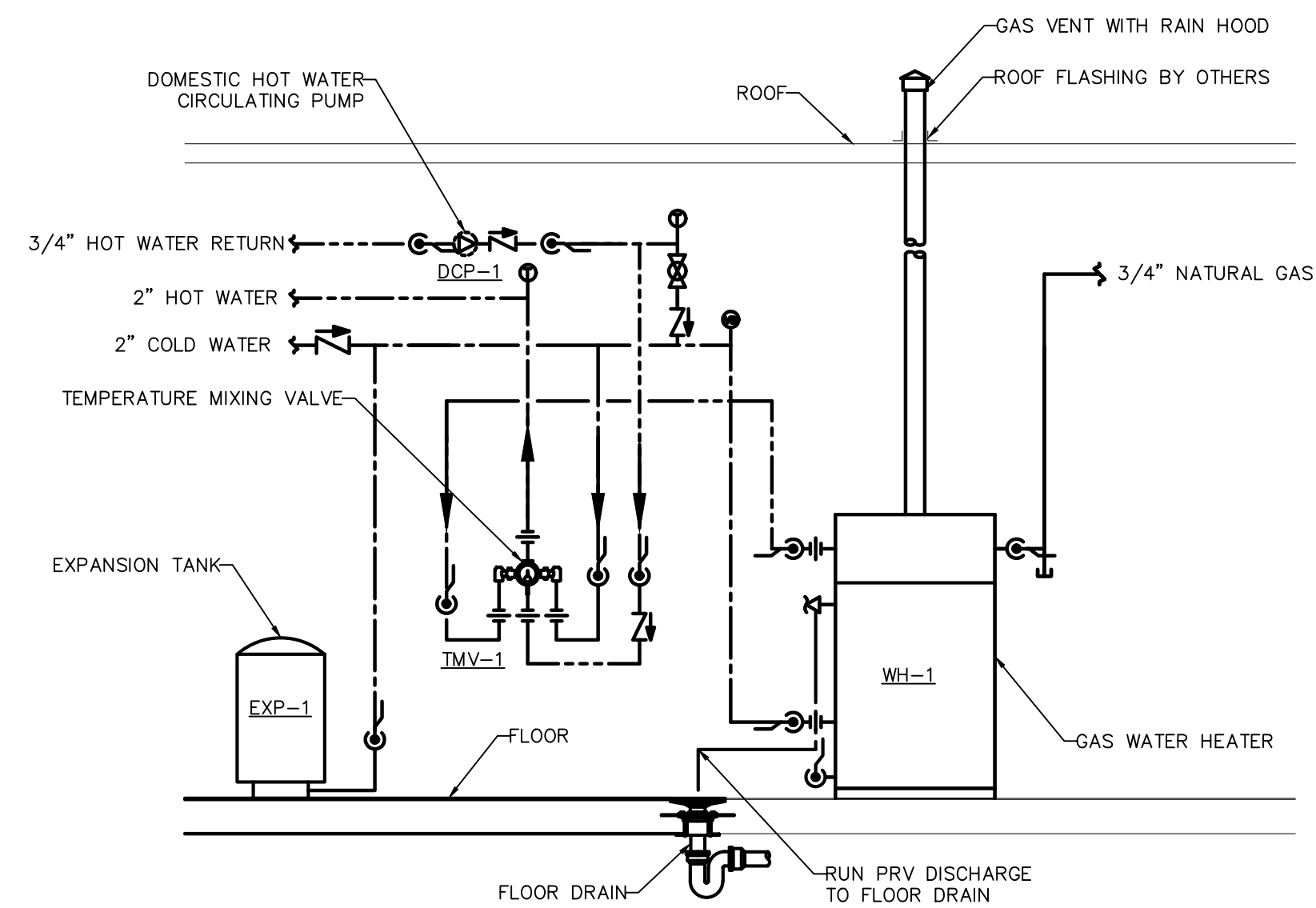
CHECKED BY: JPN

ISSUED FOR:  
 CONSTRUCTION

SHEET NUMBER

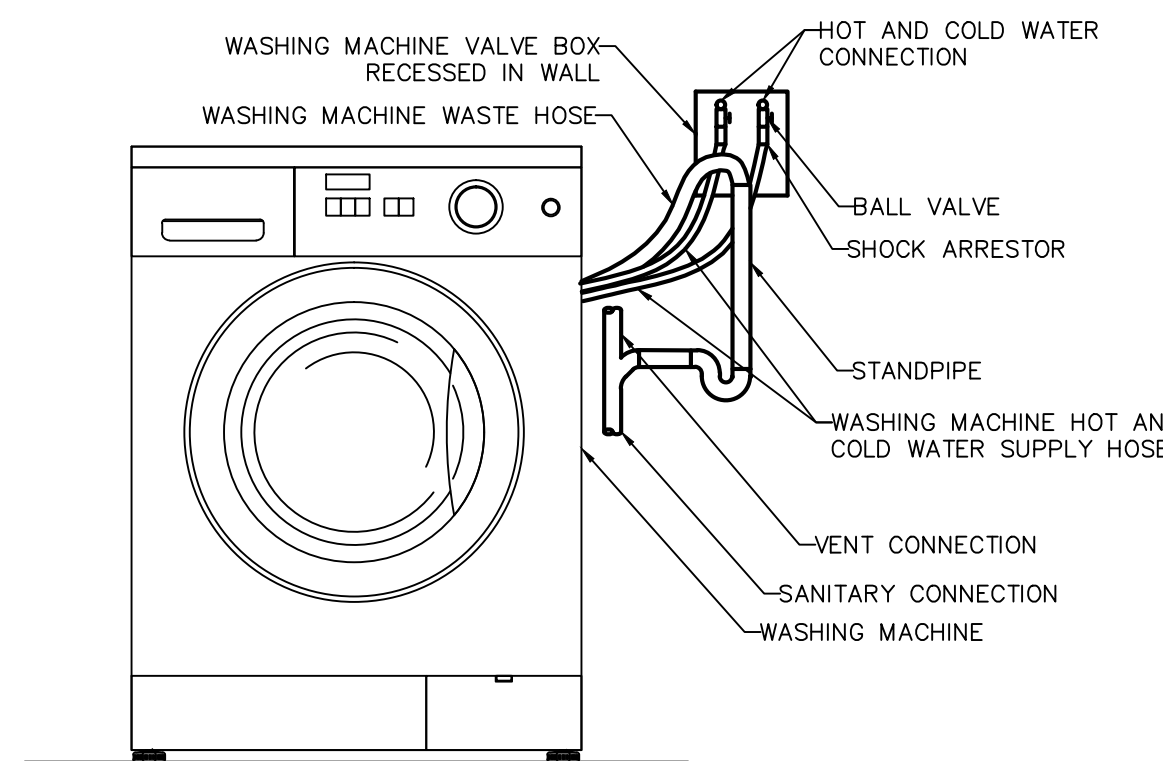
**P1.3**

PLUMBING FIXTURE SCHEDULE						
TAG	FIXTURE	CW	HW	WASTE	VENT	MODEL, REMARKS
P-1	WATER CLOSET, FLOOR MOUNTED	1/2"	-	4"	2"	AMERICAN STANDARD "CADET 3" TANK TYPE, ELONGATED BOWL
P-1A	ADA WATER CLOSET, FLOOR MOUNTED	1/2"	-	4"	2"	AMERICAN STANDARD "CADET 3 RIGHT HEIGHT" ADA COMPLIANT, TANK TYPE, ELONGATED BOWL
P-2	WATER CLOSET, WALL HUNG	1"	-	4"	2"	AMERICAN STANDARD "AFWALL" 1.28 GPF W/ SLOAN 111-1.28 HE FLUSH VALVE
P-2A	ADA WATER CLOSET, WALL HUNG	1"	-	4"	2"	AMERICAN STANDARD "AFWALL" 1.28 GPF W/ SLOAN 111-1.28 HE FLUSH VALVE
P-3	ADA LAVATORY, WALL HUNG	1/2"	1/2"	1-1/2"	1-1/2"	AMERICAN STANDARD "LUCERNE" W/ SYMMONS S-20-0 FAUCET, 0.5 GPM
P-4	36"x36" SHOWER STALL	1/2"	1/2"	1-1/2"	1-1/2"	AQUARIUS BATHWARE G 3679 SH W/ SYMMONS 96-1-1.5GPM SHOWER SYSTEM
P-5	36"x36" ADA SHOWER STALL	1/2"	1/2"	1-1/2"	1-1/2"	AQUARIUS BATHWARE G 3682 BF .5 W/ SYMMONS S-96-300-B30-L-V
P-6	ADA DOUBLE BOWL S.S. KITCHEN SINK	1/2"	1/2"	2"	1-1/2"	DAYTON GE23321 W/ CHICAGO FAUCETS 201-AGN8AE3-317 GOOSENECK FAUCET
P-7	24"x24" MOP BASIN	1/2"	1/2"	3"	2"	FIAT MSBID2424, W/ MOP HANGER, WALL PROTECTOR & CHICAGO FAUCET 897-CP
P-8	LAUNDRY VALVE	1/2"	1/2"	2"	1 1/2"	SYMMONS LAUNDRY MATE W-602 SUPPLY AND DRAIN FIXTURE
FPWH-1	FROST PROOF WALL HYDRANT	3/4"	-	-	-	EXPOSED, NON FREEZE, ANTI SIPHON, AUTO DRAIN SS FACE WITH OPERATING KEY
FD-1	2" FLOOR DRAIN	-	-	2"	2"	ZURN Z-415 W/ DECK PLATE W/ TRAP PRIMER FROM CLOSEST FIXTURE
WH-1	80 GALLON GAS WATER HEATER	2"	2"	-	-	RHEEM/RUDD HE80 119N SEALED COMBUSTION, DIRECT VENT WITH PVC
TMV-1	TEMPERATURE MIXING VALVE	3/4"	3/4"	-	-	POWERS LFSH1432 SET TO DELIVER 120° F
DCP-1	DOMESTIC CIRCULATOR PUMP	-	3/4"	-	-	TACO IFC 09-IFC
EXP-1	EXPANSION TANK	1/2"	-	-	-	AMTROL ST-8
SP-1	SUMP PUMP	-	-	2"	-	ABS ROBUSTA LIGHT DRAINAGE PUMP MODEL 200 WITH DETACHABLE SUCTION RING
SP-2	SUMP PUMP FOR ELEVATOR	-	-	2"	-	ABS SCAVENGER EF 05W WITH OIL ALERT CONTROL ALARM SYSTEM



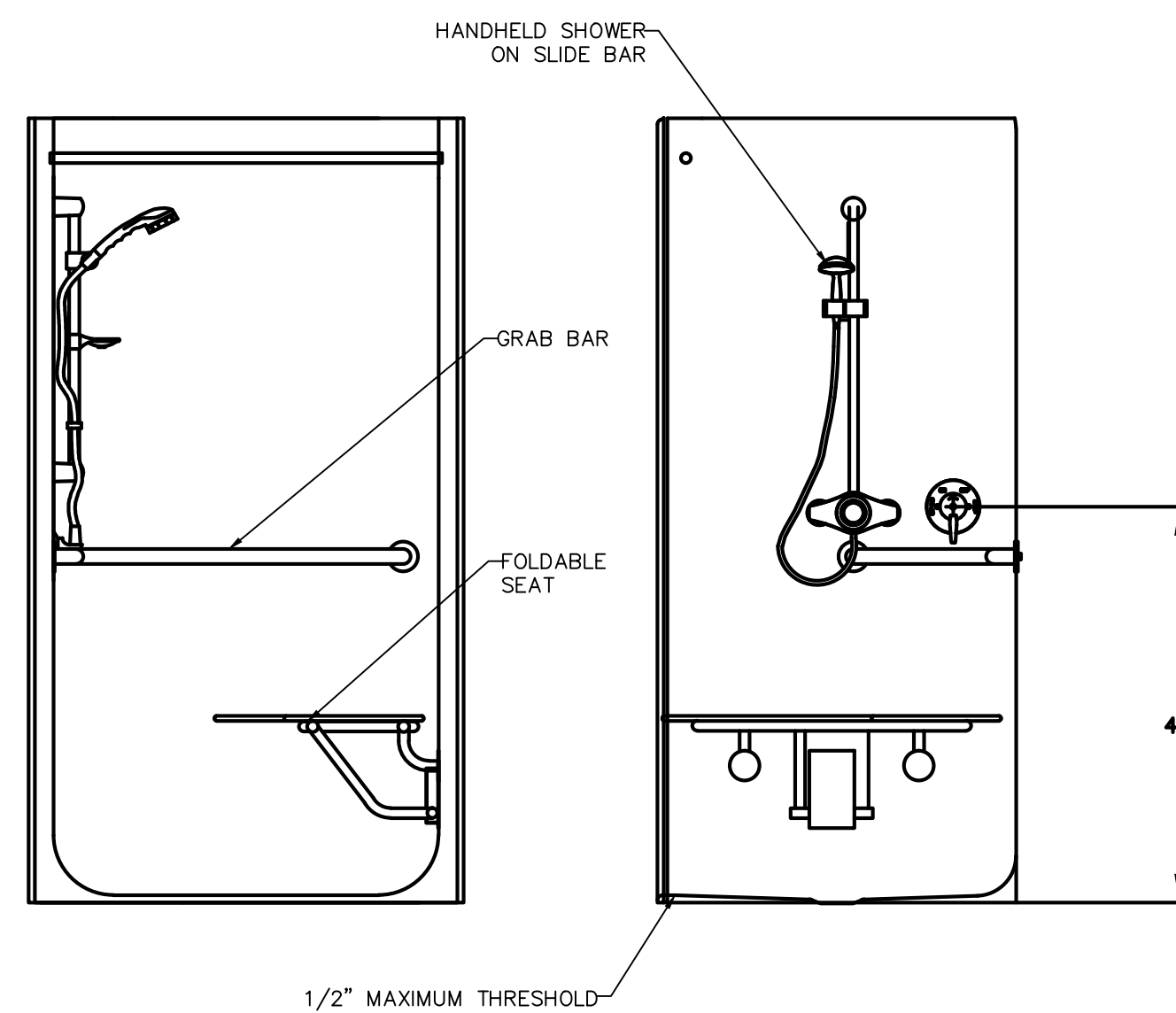
**GAS WATER HEATER DETAIL P-9**

NO SCALE



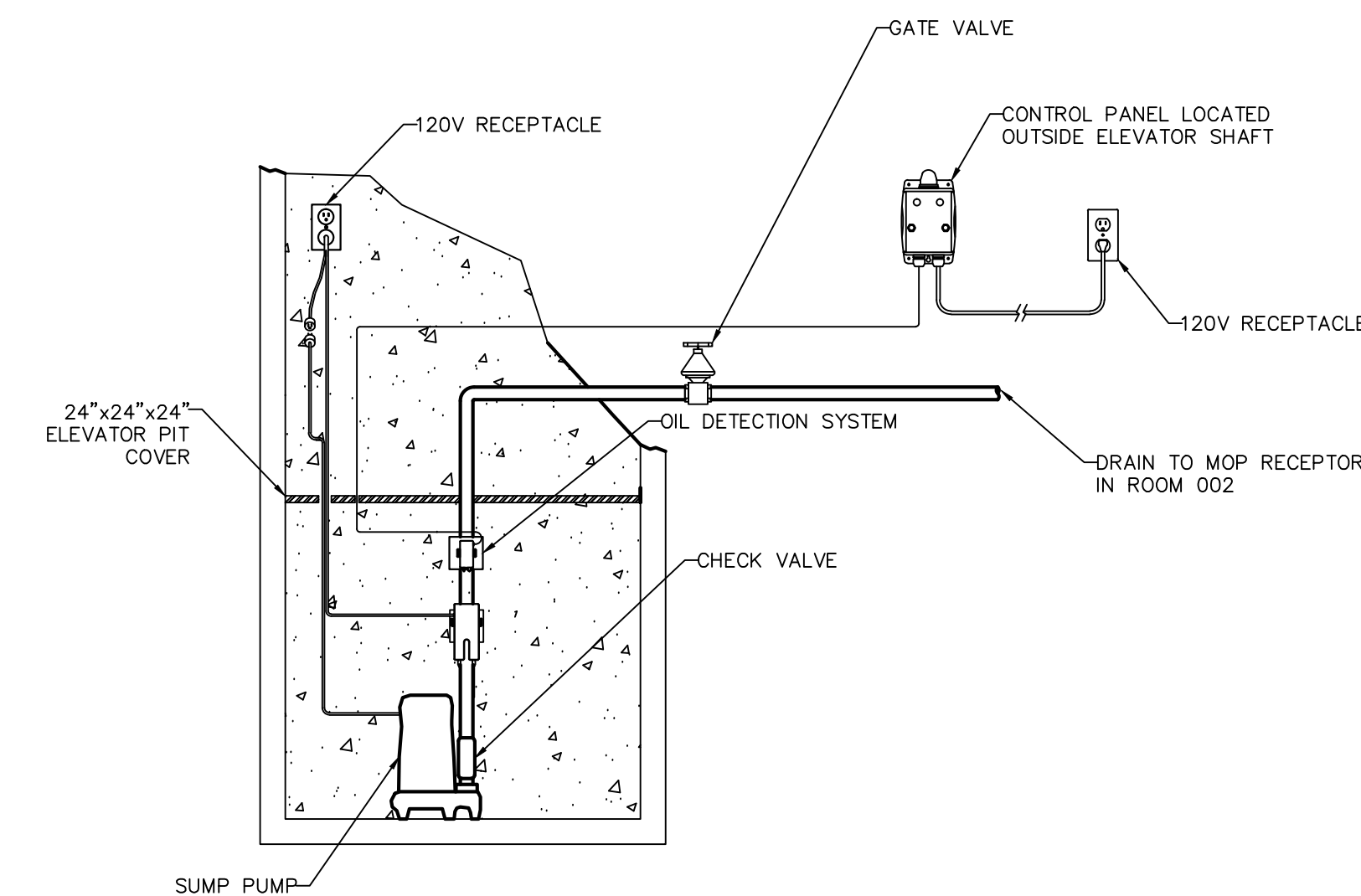
**WASHING MACHINE VALVE BOX DETAIL**

NO SCALE



**ADA TRANSFER SHOWER DETAIL**

NO SCALE



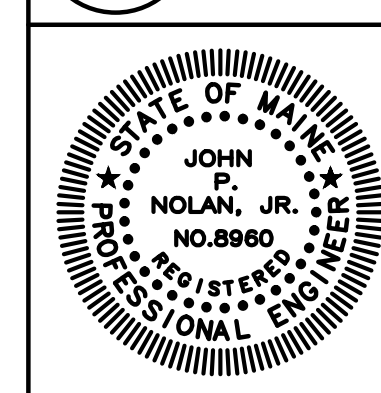
**ELEVATOR SUMP PUMP DETAIL**

NO SCALE

This document is owned by and the information contained in it is proprietary to Titan Mechanical Inc. By receipt hereof the holder agrees not to use the information, disclose it to any third party, nor reproduce this document without the prior written consent of Titan Mechanical Inc. and agrees to return this document forthwith upon request.

DATE	REVISIONS

**Titan Mechanical, Inc.**  
 Design/Build Engineering - Mechanical Contracting  
 P.O. Box 3927 / 41 Evergreen Drive  
 Portland, Maine 04104  
 Ph. (207) 878-5223 Fax. (207) 878-5225



TEEN SHELTER  
 CLIENT  
 38 PREBLE STREET  
 PROJECT  
 PLUMBING SCHEDULES AND DETAILS  
 DRAWING TITLE

DATE: 3/20/2012

SCALE: 1/4" = 1'-0"

DRAWN BY: SGH

CHECKED BY: JPN

ISSUED FOR: CONSTRUCTION

SHEET NUMBER

**P2.0**