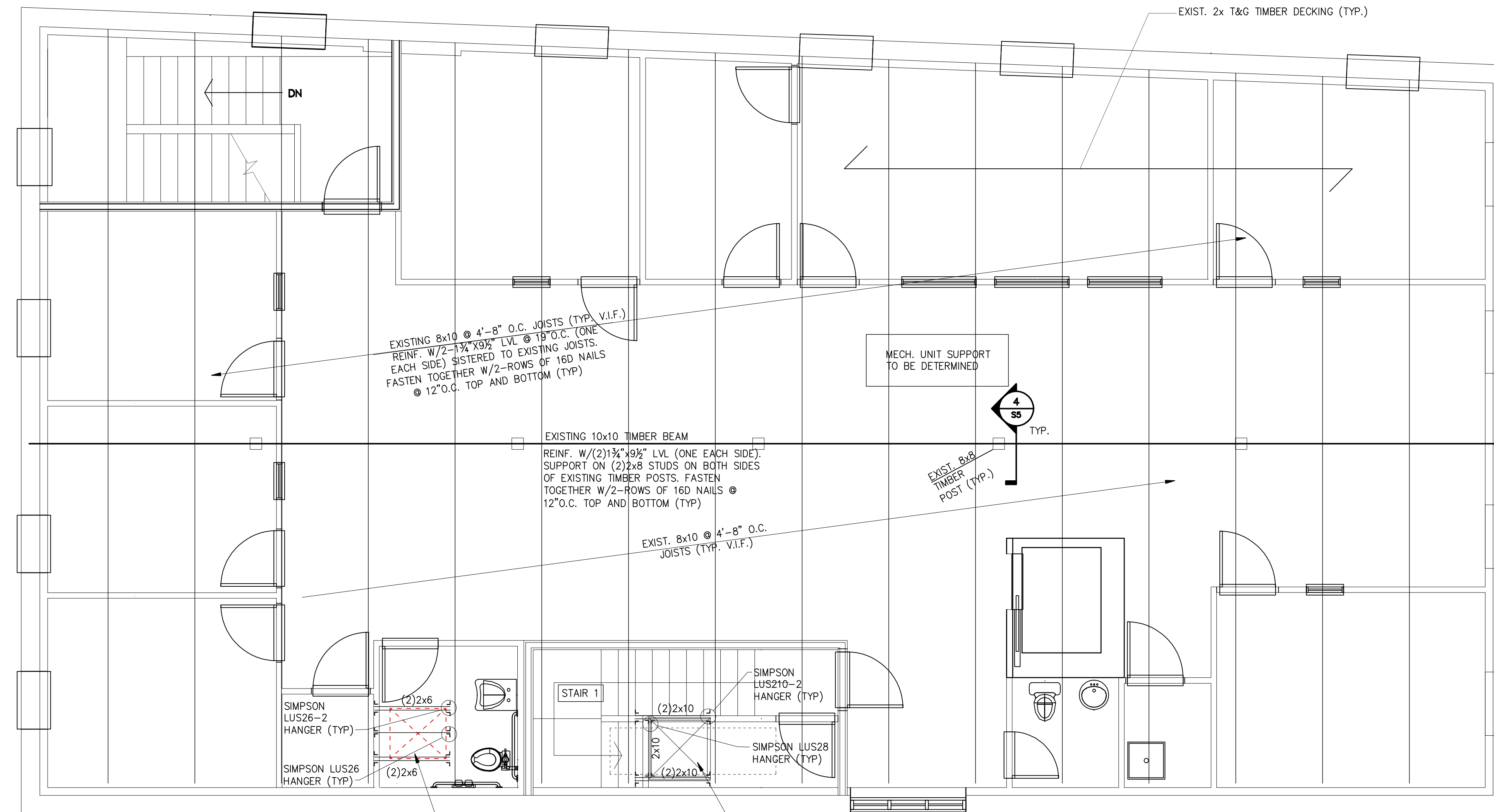


PRELIMINARY NOT  
FOR CONSTRUCTION



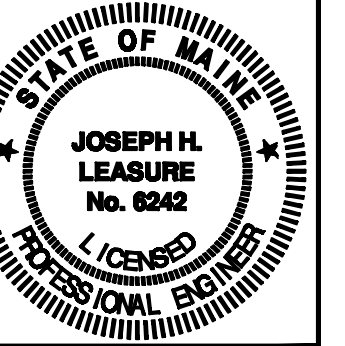
EXIST. ROOF HATCH TO BE REMOVED INFILL W/2x6 @ 16" O.C. FROM EXIST. JOIST TO EXIST. JOIST AS SHOWN OR 2x6 NAILERS AROUND EXIST. HDR.'s (V.I.F.). INSTALL (2) LAYERS 3/4" APA RATED PLYWOOD SHEATHING TO MATCH EXIST. (V.I.F.) (TYP)

NEW 36"x36" ROOF HATCH (SEE ARCH)

NOTES:  
1) ALL NEW JOIST REINFORCING MEMBERS SHALL BEAR 2" MIN. ON THE EXISTING SUPPORT WALLS/BEAMS AT BOTH ENDS (TYP)

**PARTIAL ROOF FRAMING PLAN**  
1/4" = 1'-0"

L & L STRUCTURAL  
ENGINEERING SERVICES, INC.  
SIX O. STREET  
SOUTH PORTLAND, MAINE 04106  
PHONE: (207) 767-4830  
FAX: (207) 799-5432



rev.	date	description	designed by: JHL	checked by: JHL	drawn by: AKB	scale: AS NOTED	date: 1-24-12	plot date: 4-4-12	project #: 2011-161
A	3-20-12	FOR REVIEW & PRICING	JHL	JHL					
B	4-4-12	FOR REVIEW & PRICING	JHL	JHL					

38 PREBLE STREET TEEN SHELTER  
PORTLAND, MAINE  
PARTIAL ROOF FRAMING PLAN

**S4**

THESE DRAWINGS HAVE BEEN DEVELOPED BY L&L STRUCTURAL ENGINEERING SERVICES, INC. FOR THE TITLED SET ONLY. THE DRAWINGS ARE THE SOLE PROPERTY OF L&L ENGINEERING SERVICES, INC. AND THEY SHALL NOT BE USED, LENT, COPIED OR ALTERED WITHOUT THE WRITTEN CONSENT OF L&L STRUCTURAL ENGINEERING SERVICES, INC.