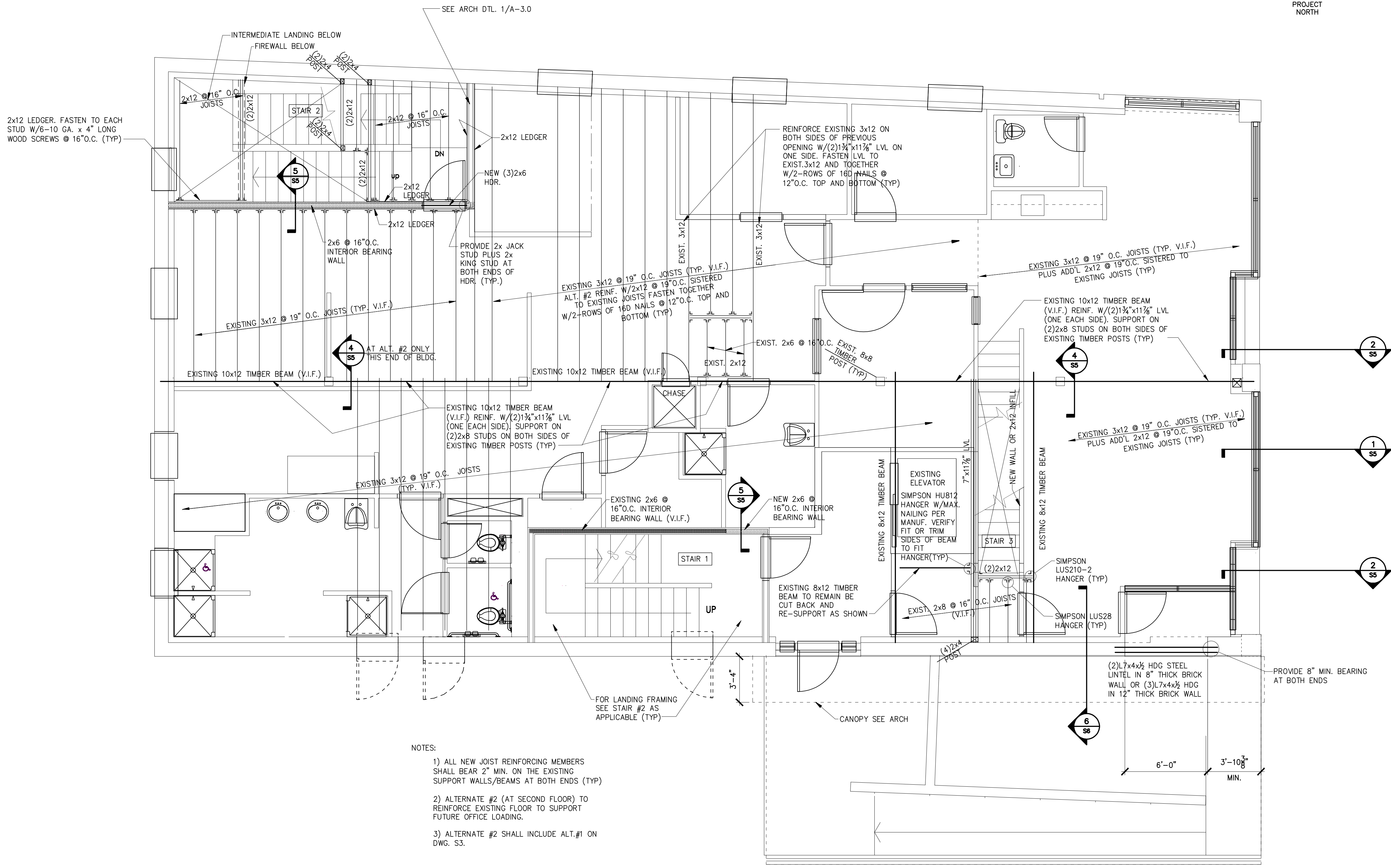


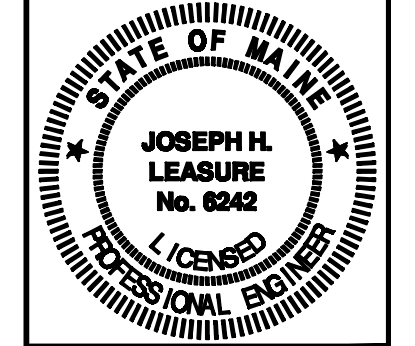
PRELIMINARY NOT FOR CONSTRUCTION



- NOTES:
- 1) ALL NEW JOIST REINFORCING MEMBERS SHALL BEAR 2" MIN. ON THE EXISTING SUPPORT WALLS/BEAMS AT BOTH ENDS (TYP)
 - 2) ALTERNATE #2 (AT SECOND FLOOR) TO REINFORCE EXISTING FLOOR TO SUPPORT FUTURE OFFICE LOADING.
 - 3) ALTERNATE #2 SHALL INCLUDE ALT.#1 ON DWG. S3.

PARTIAL SECOND FLOOR FRAMING PLAN
1/8" = 1'-0"

L & L STRUCTURAL ENGINEERING SERVICES, INC.
SIX O. STREET
SOUTH PORTLAND, MAINE 04106
PHONE: (207) 767-4830
FAX: (207) 799-5432



rev.	date	description
A	3-20-12	FOR REVIEW & PRICING
B	4-4-12	FOR REVIEW & PRICING

designed by: JHL
drawn by: AKB
checked by: JHL
scale: AS NOTED
date: 1-24-12
plot date: 4-4-12
project #: 2011-161

38 PREBLE STREET TEEN SHELTER
PORTLAND, MAINE
PARTIAL SECOND FLOOR FRAMING PLAN

S2

THESE DRAWINGS HAVE BEEN DEVELOPED BY L&L STRUCTURAL ENGINEERING SERVICES, INC. FOR THE TITLED SET ONLY. THE DRAWINGS ARE THE SOLE PROPERTY OF L&L ENGINEERING SERVICES, INC. AND THEY SHALL NOT BE USED, LENT, COPIED OR ALTERED WITHOUT THE WRITTEN CONSENT OF L&L STRUCTURAL ENGINEERING SERVICES, INC.