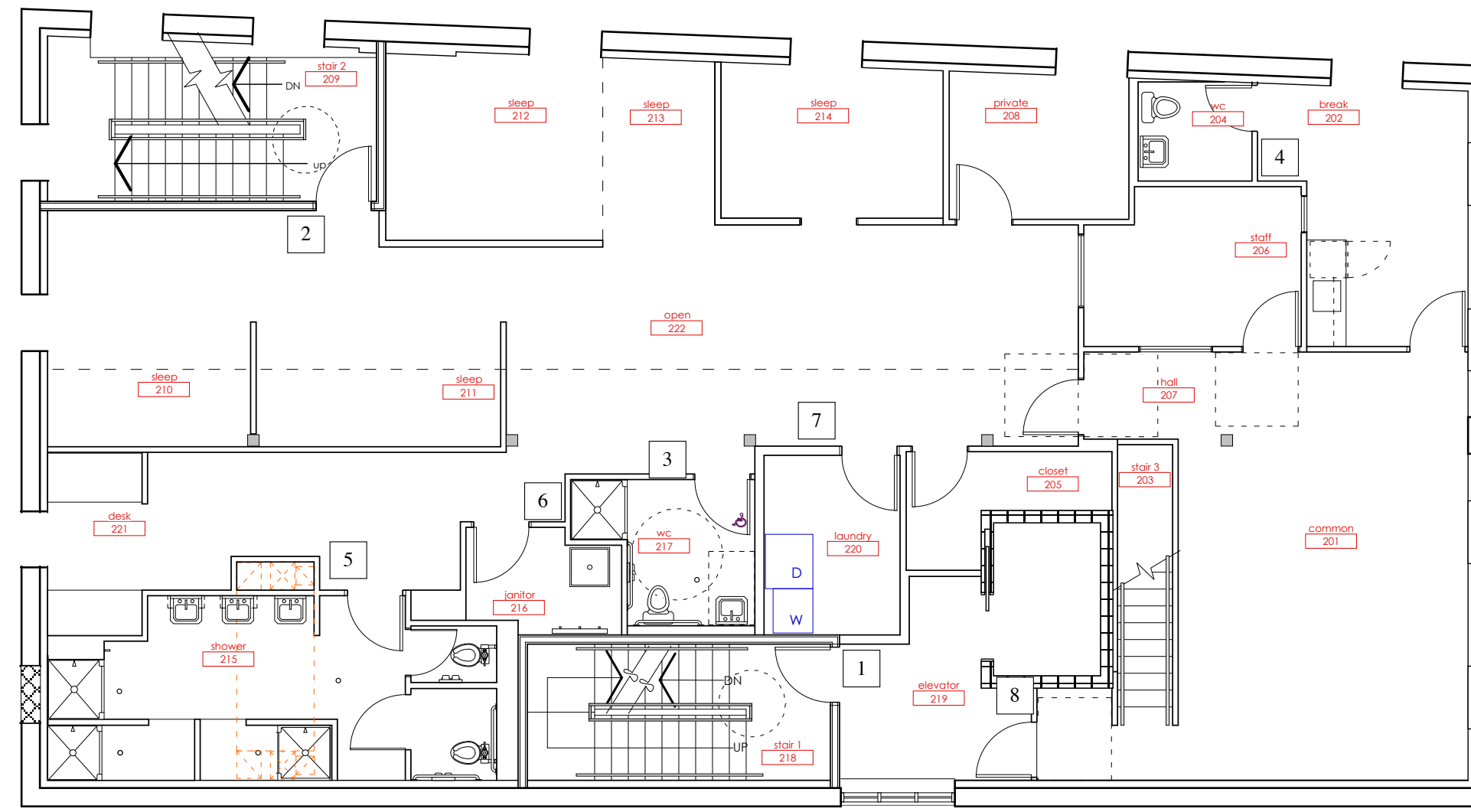
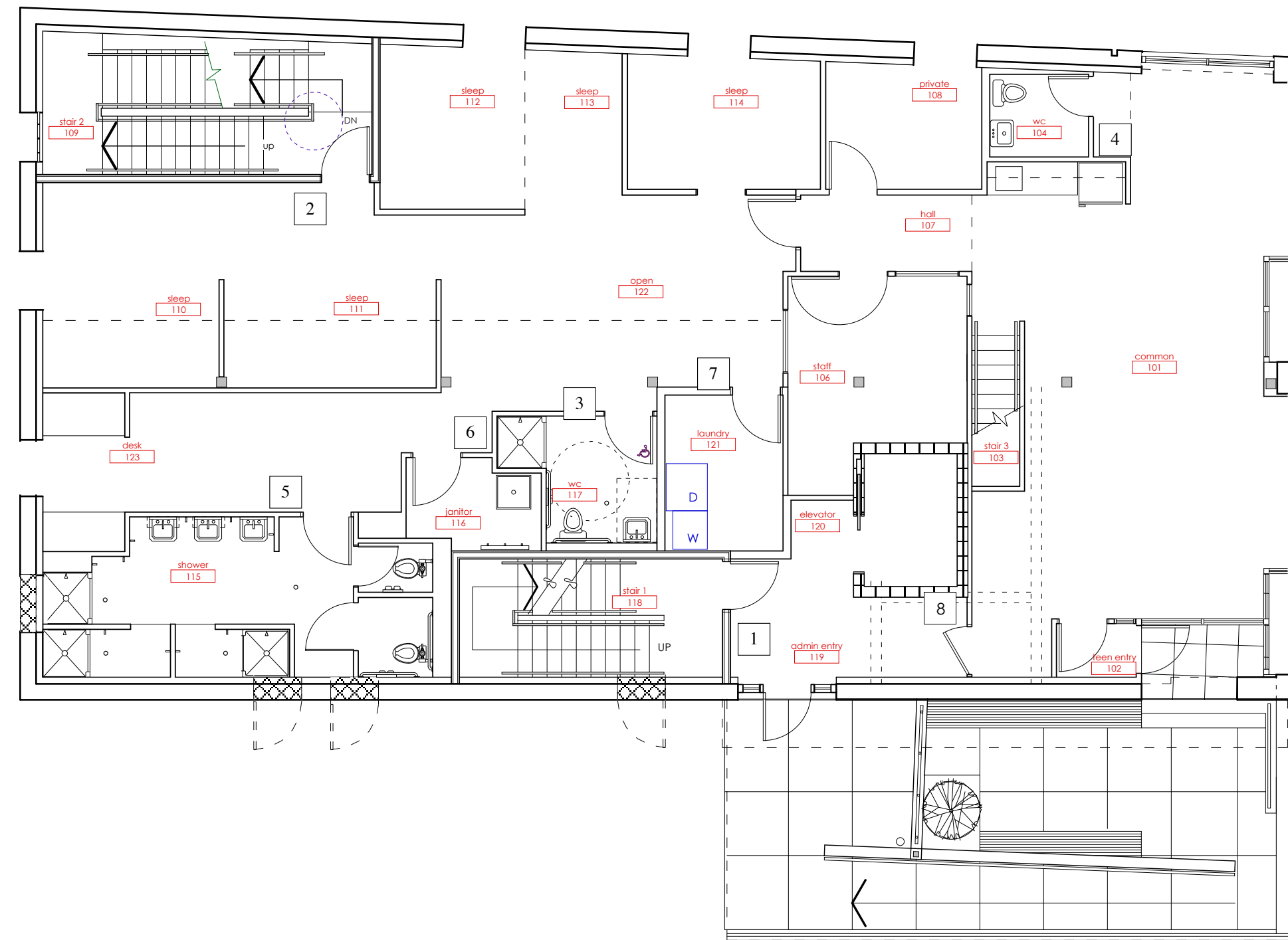


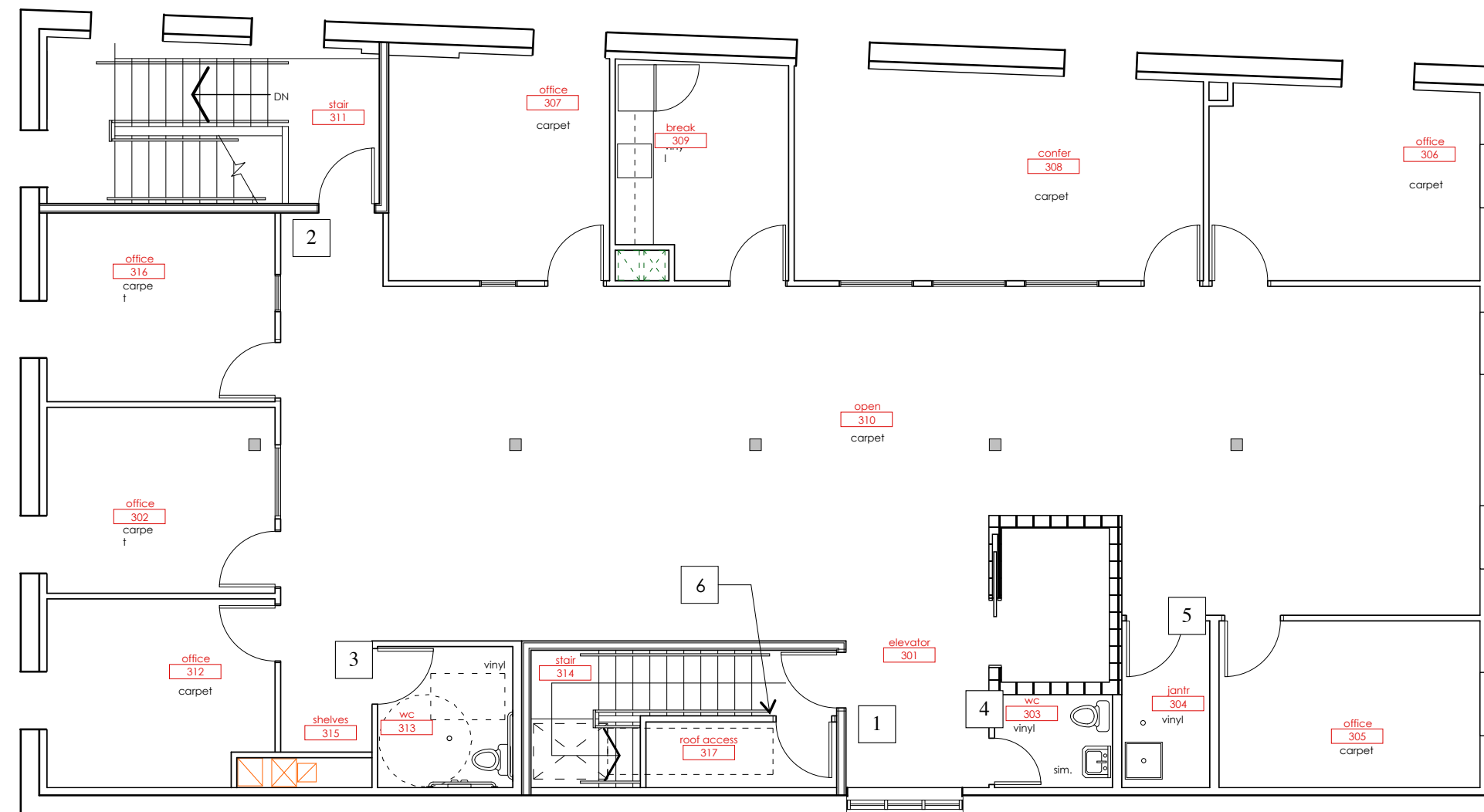
A-1.0 BASEMENT



A-1.2 SECOND FLOOR



A-1.1 FIRST FLOOR



A-1.3 THIRD FLOOR

DOOR SIGN SCHEDULE			
DOOR NUMBER	ROOM	SIGN TYPE	SIGN TEXT
BASEMENT			
1	005 STAIR 1	3	STAIR 1
2	009 STAIR 2	3	STAIR 2
3	reserve		
4	001 utilities	4	STAIR 2
5	reserve		
6	Rm 004 ELEV MECH	4	ELEVATOR MECHANICAL
7	006 WC	4	WC
8	007 HCP WC	5	HCP WC
9	0013 ELECTRICAL	4	ELECTRICAL ROOM
FIRST LEVEL			
1	118 STAIR 1	2	*see sign type
2	109 STAIR 2	1	*see sign type
3	117 HCP WC	5	HCP WC
4	104 WC	4	WC
5	115 MEN'S SHOWER	6	*see sign type
6	116 JANITOR	4	
7	121 LAUNDRY	4	
8	119 TEEN ENTRY	4	
2ND LEVEL			
1	218 STAIR 1	1	
2	209 STAIR 2	1	103
3	217 HCP WC	5	HCP WC
4	204 WC	4	WC
5	215 WOMEN'S SHOWER	6	*see sign type
6	216 JANITOR	4	216 JANITOR
7	LAUNDRY	4	
8	219 TEEN ENTRY	4	
3RD LEVEL			
1	317 STAIR 1	1	STAIR 1
2	311 STAIR 2	1	STAIR 2
3	313 HCP WC	5	HCP WC
4	303 WC	4	WC
5	304 JANITOR	4	216 JANITOR
6	ROOF ACCESS	4	

NOTES:

- SIGNAGE SHALL BE LOCATED 60" AFF.
- ALL SIGNS TO MEET ADA STANDARDS.

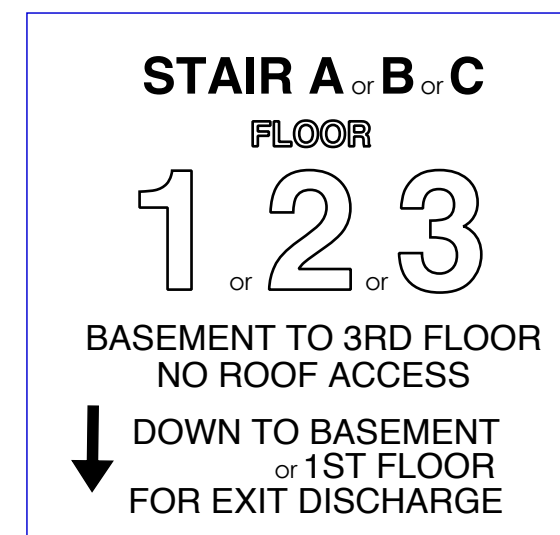
TEEN SHELTER
38 PREBLE STREET
SIGNAGE

Owner:
Preble Street
18 Portland Street
Portland, Maine

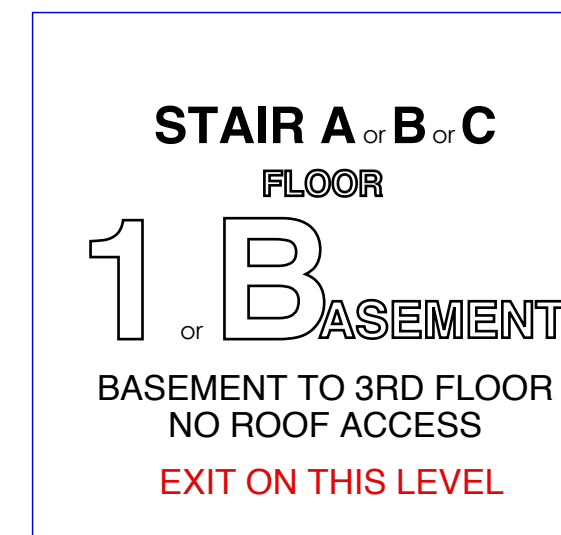
Architect:
James Sterling, AIA
Architect
142 High Street
Portland, Maine

SIGN SCHEDULE. THESE SIGNS ARE BASED ON NFPA 101 - 7.2.2.5.4 TO SHOW INTENT ONLY. THEY SHALL BE MODIFIED AS PER BUILT CONDITIONS.

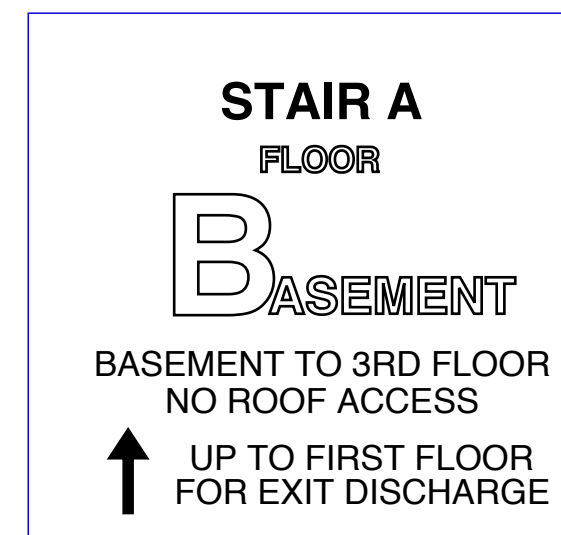
SIGN TYPE 1:



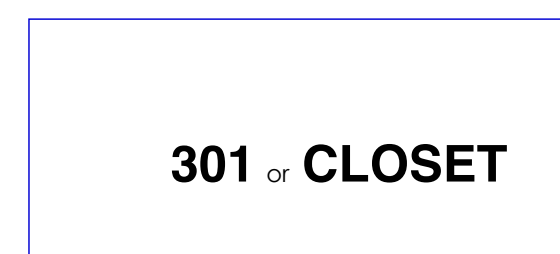
SIGN TYPE 2:



SIGN TYPE 3:



SIGN TYPE 4:



SIGN TYPE 5:



SIGN TYPE 6:



A-6.4

