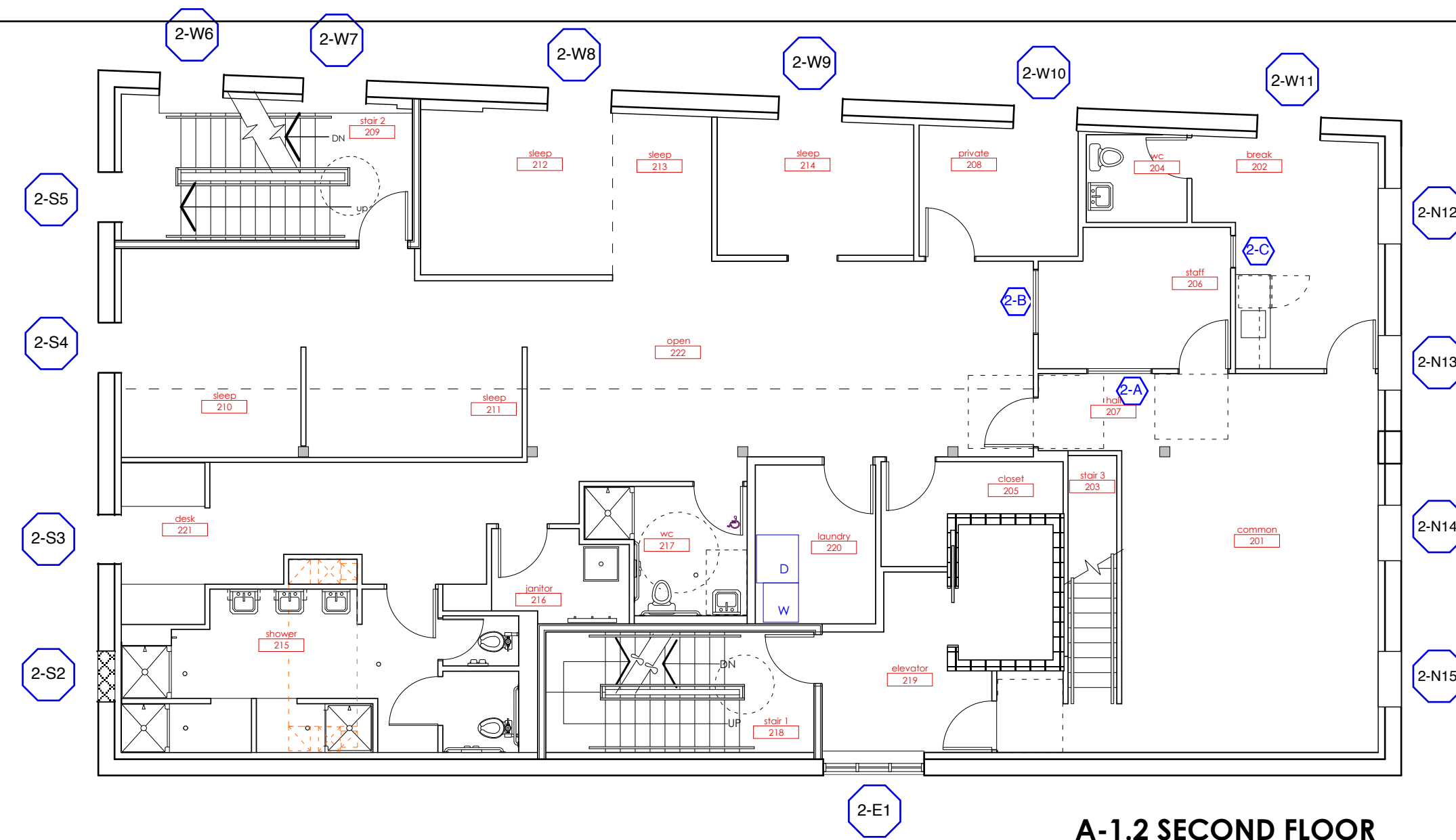
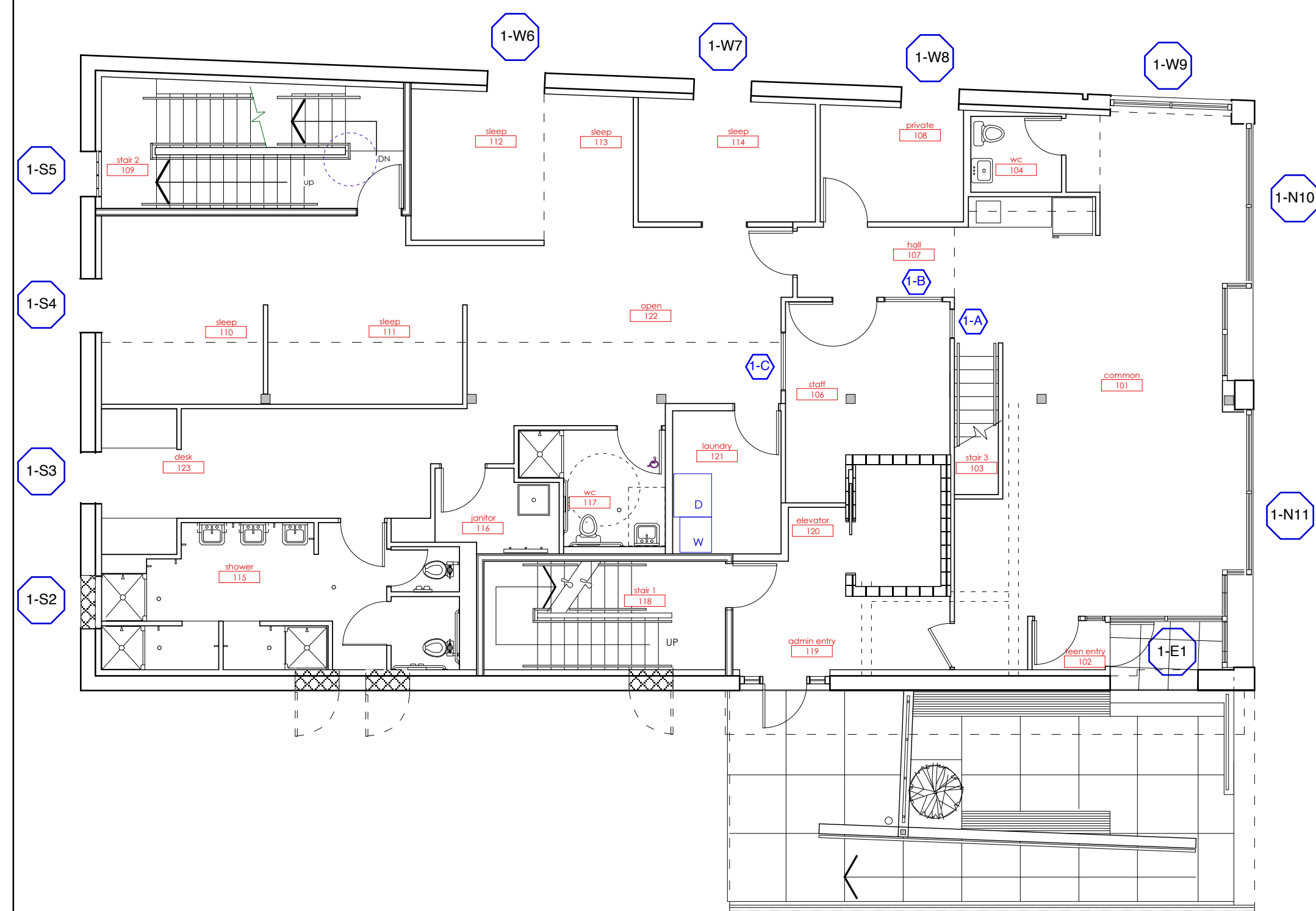


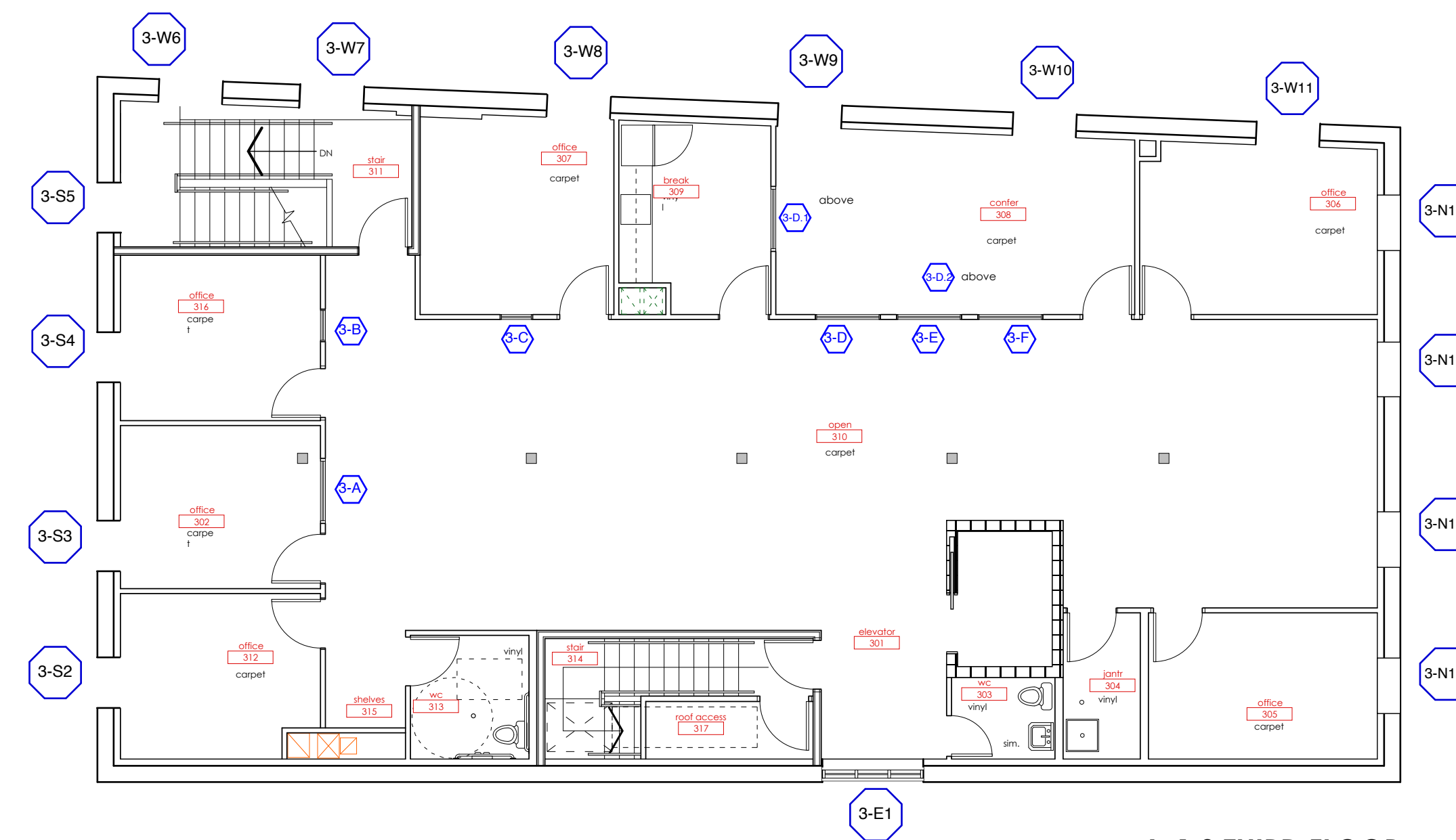
A-1.0 BASEMENT



A-1.2 SECOND FLOOR



A-1.1 FIRST FLOOR



A-1.3 THIRD FLOOR

EXTERIOR WINDOWS

BASEMENT LEVEL

- B-W1 } Existing to Remain
- B-W2 } Existing to Remain
- B-W3 } Existing to Remain

FIRST LEVEL (see note 2 below)

- 1-E1 } New Storefront
- 1-S2 } Existing to Remain
- 1-S3 } Existing to Remain
- 1-S4 } Existing to Remain
- 1-S5 } provide guard see detail below
- 1-W6 } Existing to Remain
- 1-W7 } Existing to Remain
- 1-W8 } Existing to Remain
- 1-W9 } Existing to Remain
- 1-S10 } New Storefront
- 1-S11 } New Storefront

SECOND LEVEL

- 2-E1 } Replace Existing Glass with Clear Insulated Glass-- see A-2.0
- 2-S2 } Remove Existing, Infill wall type 5
- 2-S3 } Existing to Remain
- 2-S4 } Existing to Remain
- 2-S5 } provide guard see detail below
- 2-W6 } provide guard see detail below
- 2-W7 } provide guard see detail below
- 2-W8 } Existing to Remain
- 2-W9 } Existing to Remain
- 2-W10 } Existing to Remain
- 2-W11 } Existing to Remain
- 2-N12 } Existing to Remain
- 2-N13 } Existing to Remain
- 2-N14 } Existing to Remain
- 2-N15 } Existing to Remain

THIRD LEVEL

- 3-E1 } Replace Existing Glass with Clear Insulated Glass-- see A-2.0
- 3-S2 } Existing to Remain
- 3-S3 } Existing to Remain
- 3-S4 } Existing to Remain
- 3-S5 } Existing to Remain
- 3-W6 } Existing to Remain
- 3-W7 } provide guard see detail below
- 3-W8 } Existing to Remain
- 3-W9 } Existing to Remain
- 3-W10 } Existing to Remain
- 3-W11 } Existing to Remain
- 3-N12 } Existing to Remain
- 3-N13 } Existing to Remain
- 3-N14 } Existing to Remain
- 3-N15 } Existing to Remain

INTERIOR WINDOWS

FIRST LEVEL

- 1-A } See below
- 1-B } Same as 2C
- 1-C } Same as 1B

SECOND LEVEL

- 2-A } Same as 1B
- 2-B } Same as 1B
- 2-C } See below

THIRD LEVEL

- 3-A } Same as 2C, horizontal
- 3-B } Same as 2C
- 3-C } Same as 2C
- 3-D } Same as 1B
- 3-D.1 } See 2/A-4.3 transom
- 3-D.2 } See 3/A-4.2 transom
- 3-E } Same as 1B
- 3-F } Same as 1B

NOTES

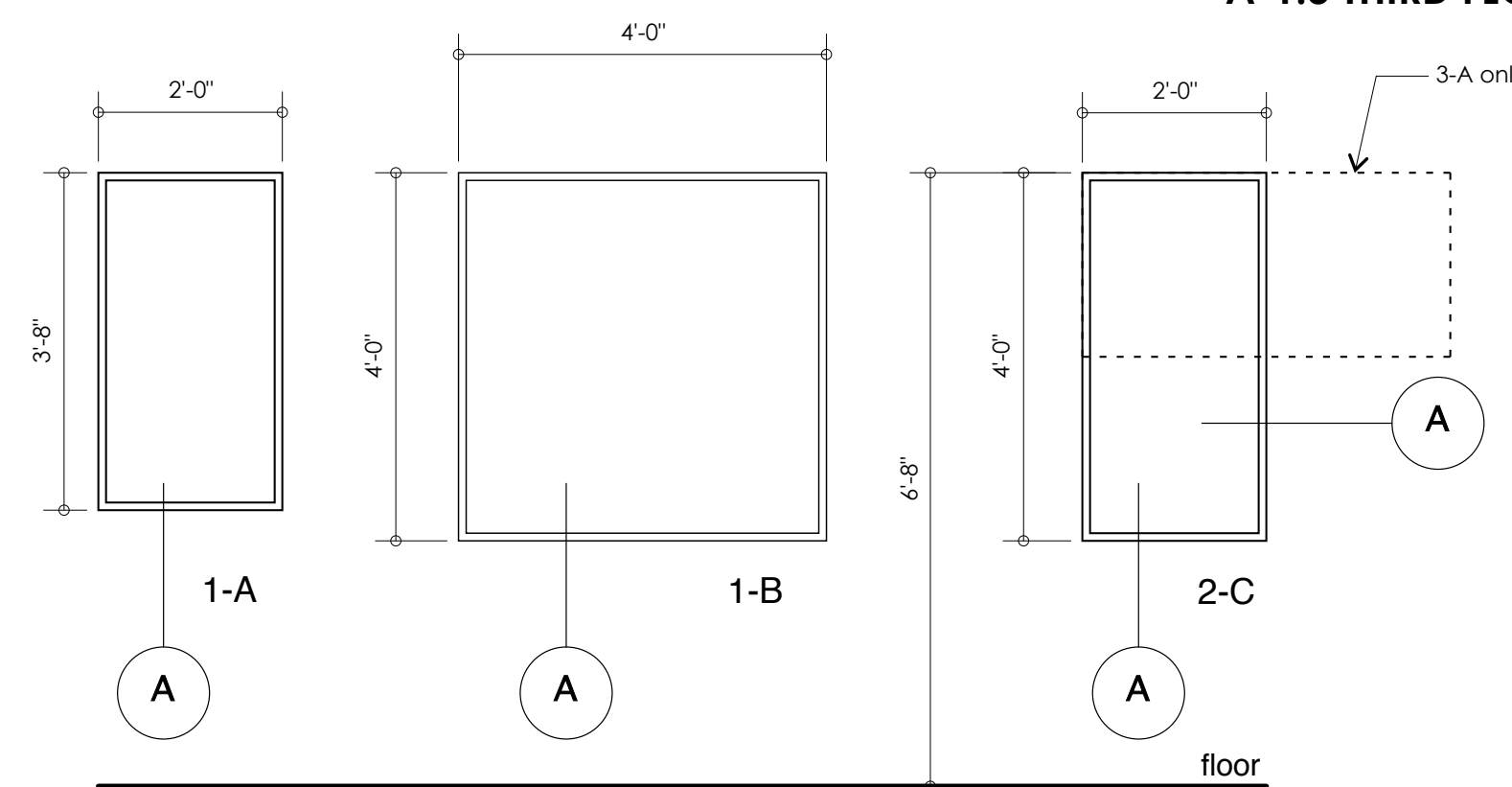
1. LEVELS 1+ 2 - PROVIDE SASH LOCK @ ALL DOUBLE HUNG WINDOWS.
2. PROVIDE FROSTED, TEMPERED INTERIOR GLASS PANELS IN ALUMINUM FRAMES AT WINDOWS: 1-S3, 1-S4, 1-W6, 1-W7, 1-W8.

TEEN SHELTER
38 PREBLE STREET

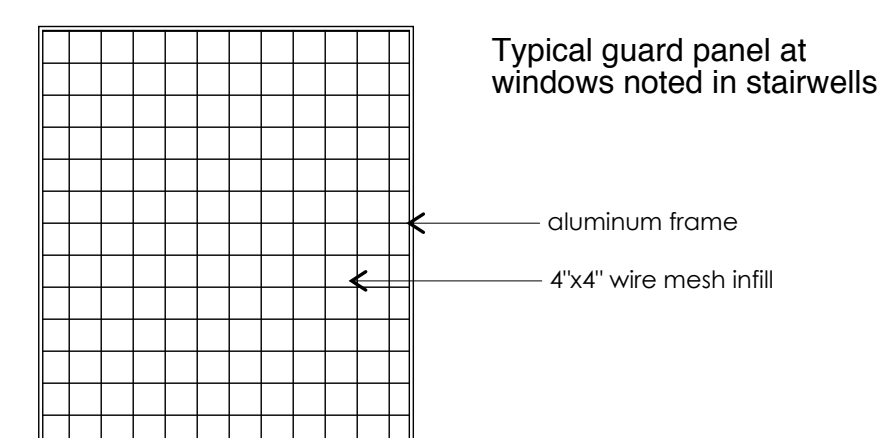
WINDOW AND INTERIOR GLASS SCHEDULE

Owner:
Preble Street
18 Portland Street
Portland, Maine

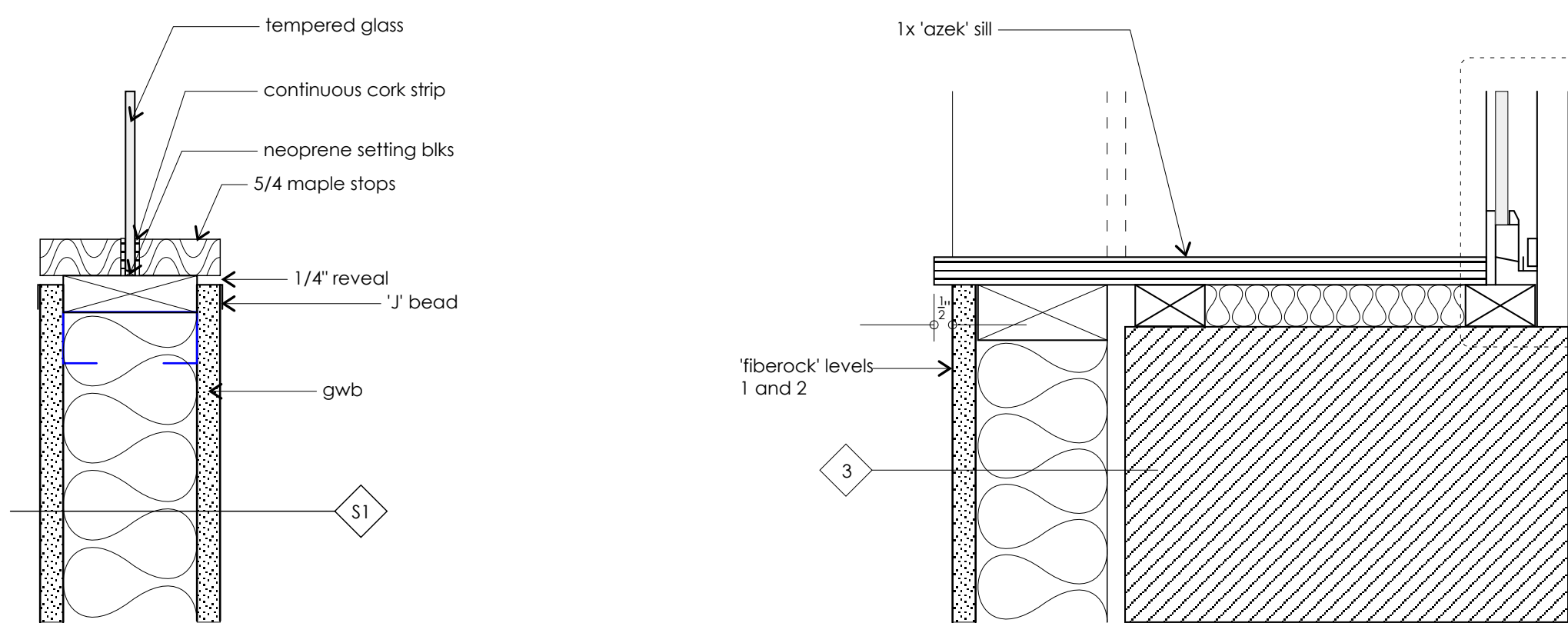
Architect:
James Sterling, AIA
Architect
142 High Street
Portland, Maine



INTERIOR WINDOW TYPES



Typical guard panel at windows noted in stairwells



DETAIL THRU INTERIOR LITES
(jamb similar)

TYPICAL DETAIL THRU EXISTING DBL HUNG WINDOWS

A-6.3

