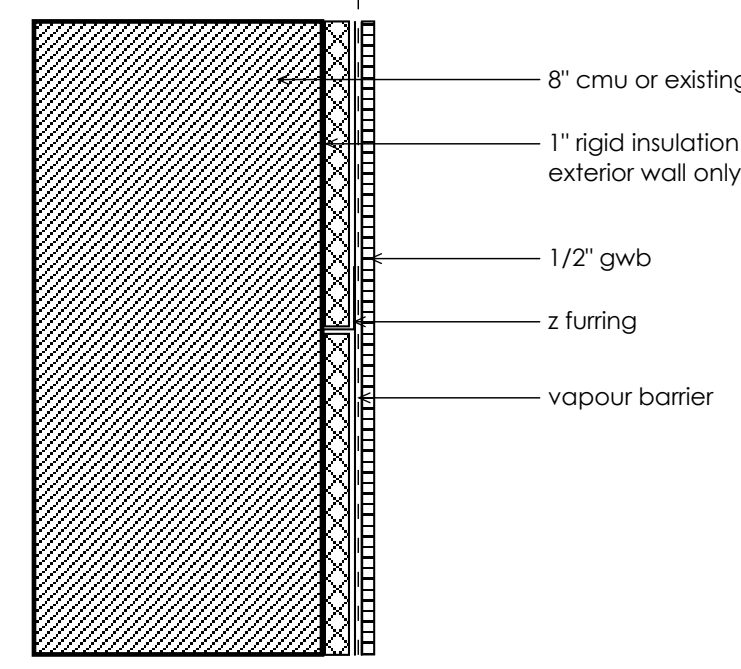
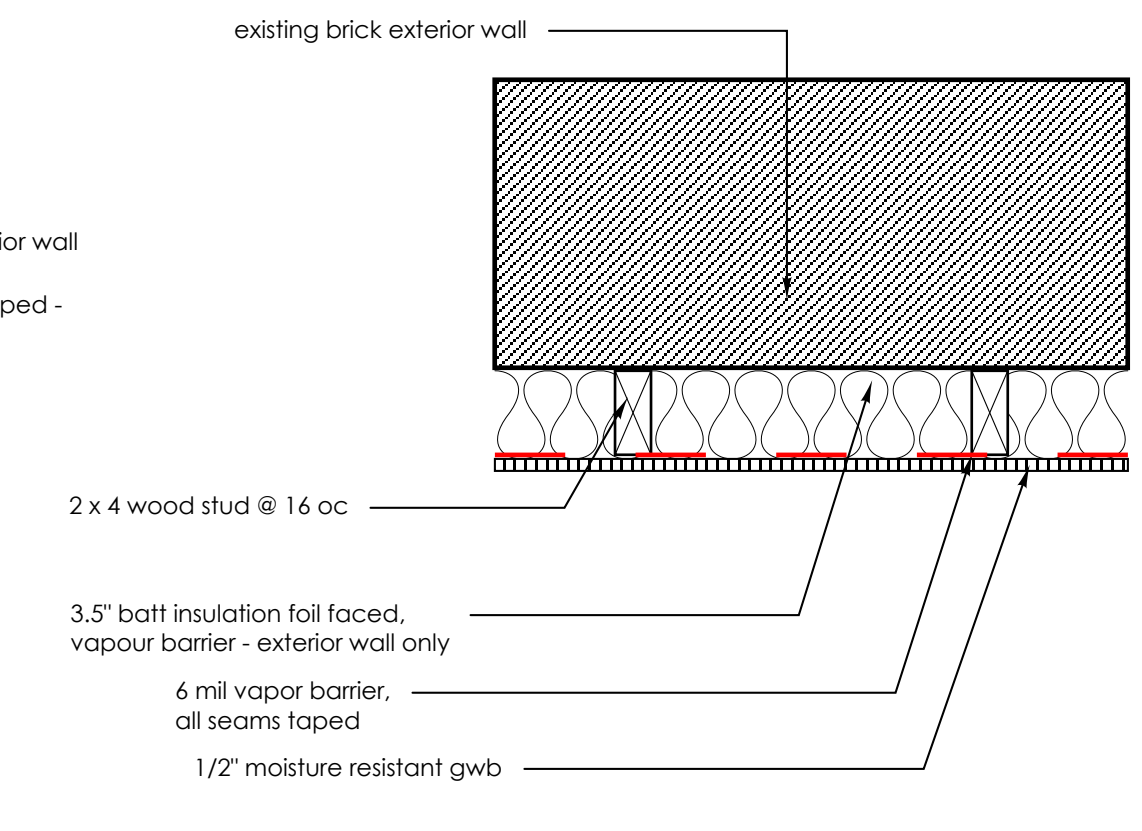


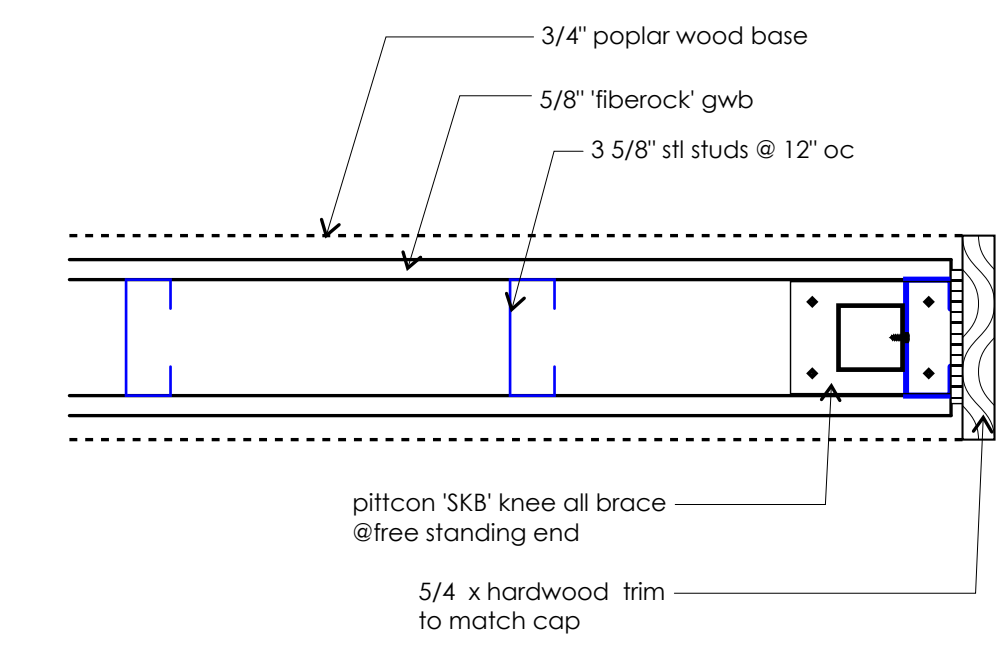
1 BASIC INTERIOR PARTITION



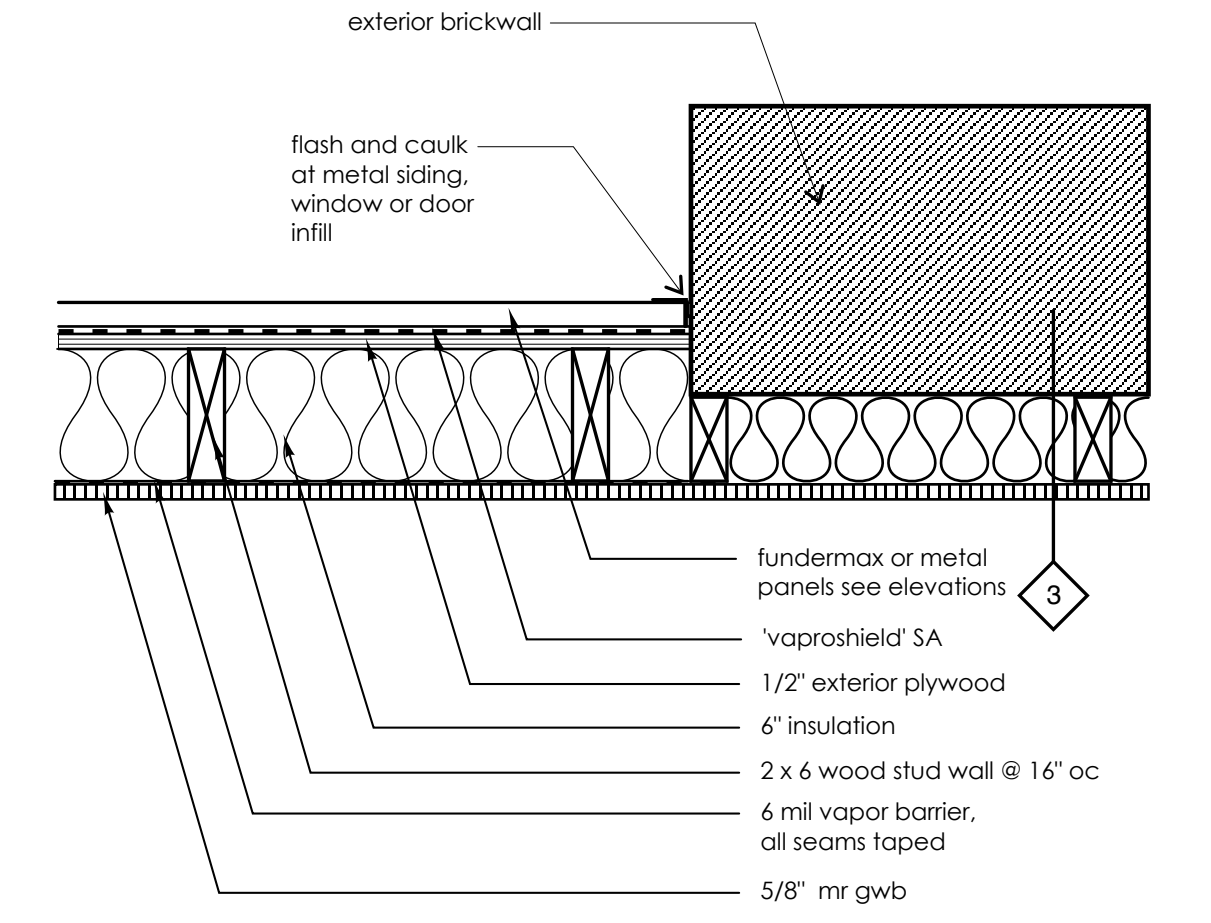
2 EXTERIOR MASONRY WALL



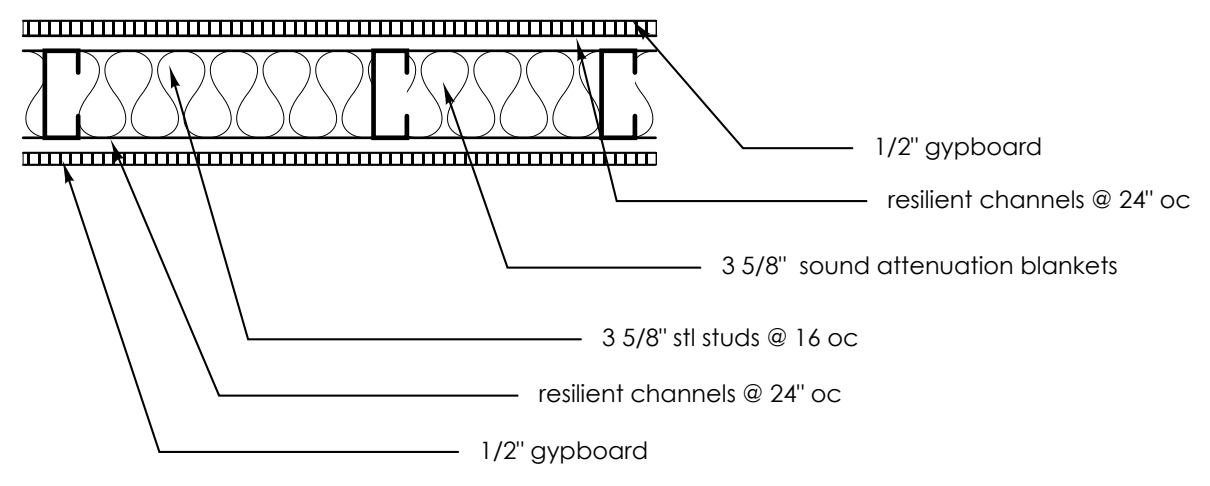
3 EXTERIOR MASONRY WALL



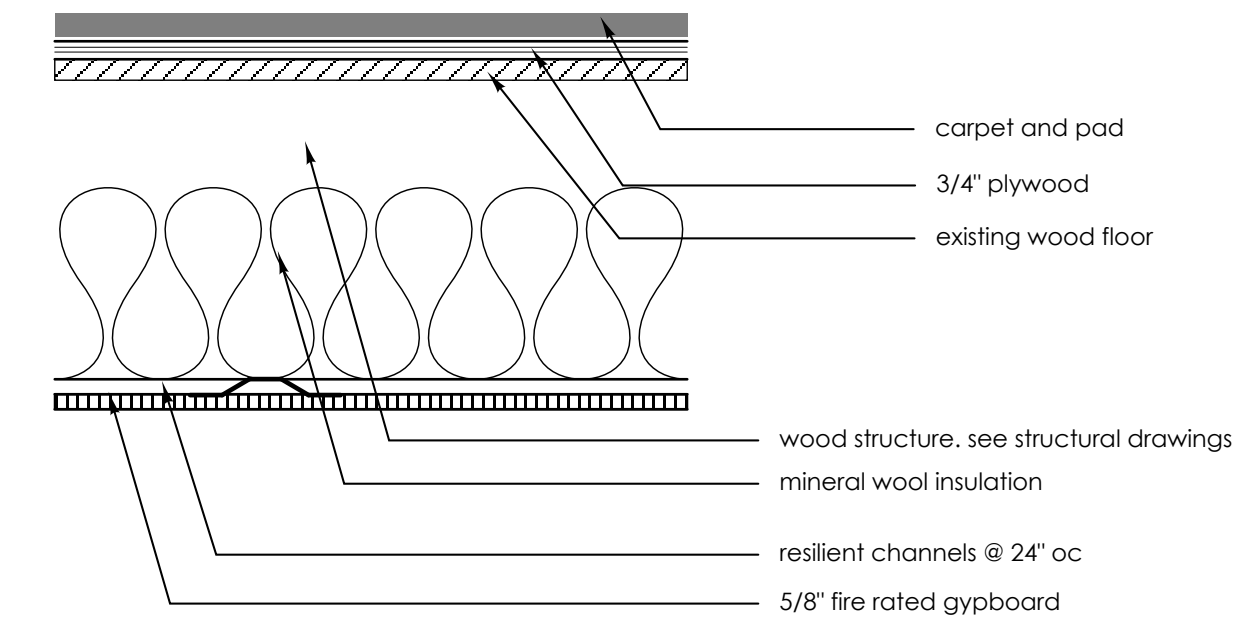
4 LOW WALLS FREE STANDING ENDS



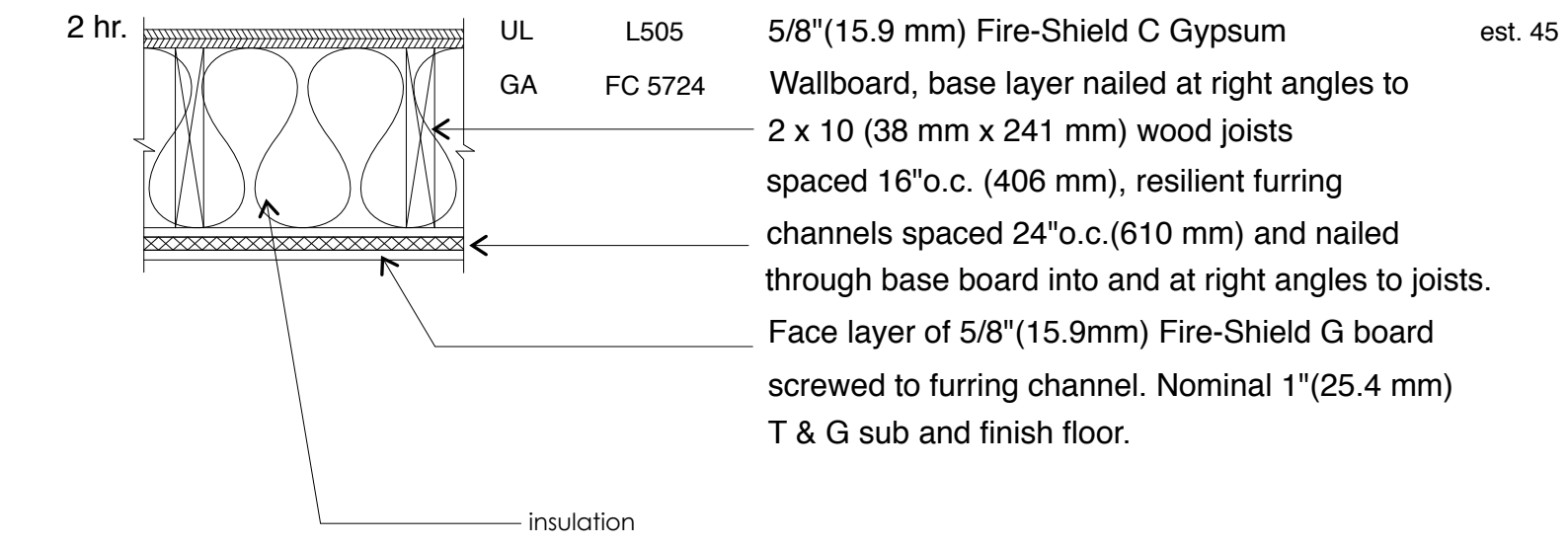
5 EXTERIOR 2 x 6 INFILL WALL



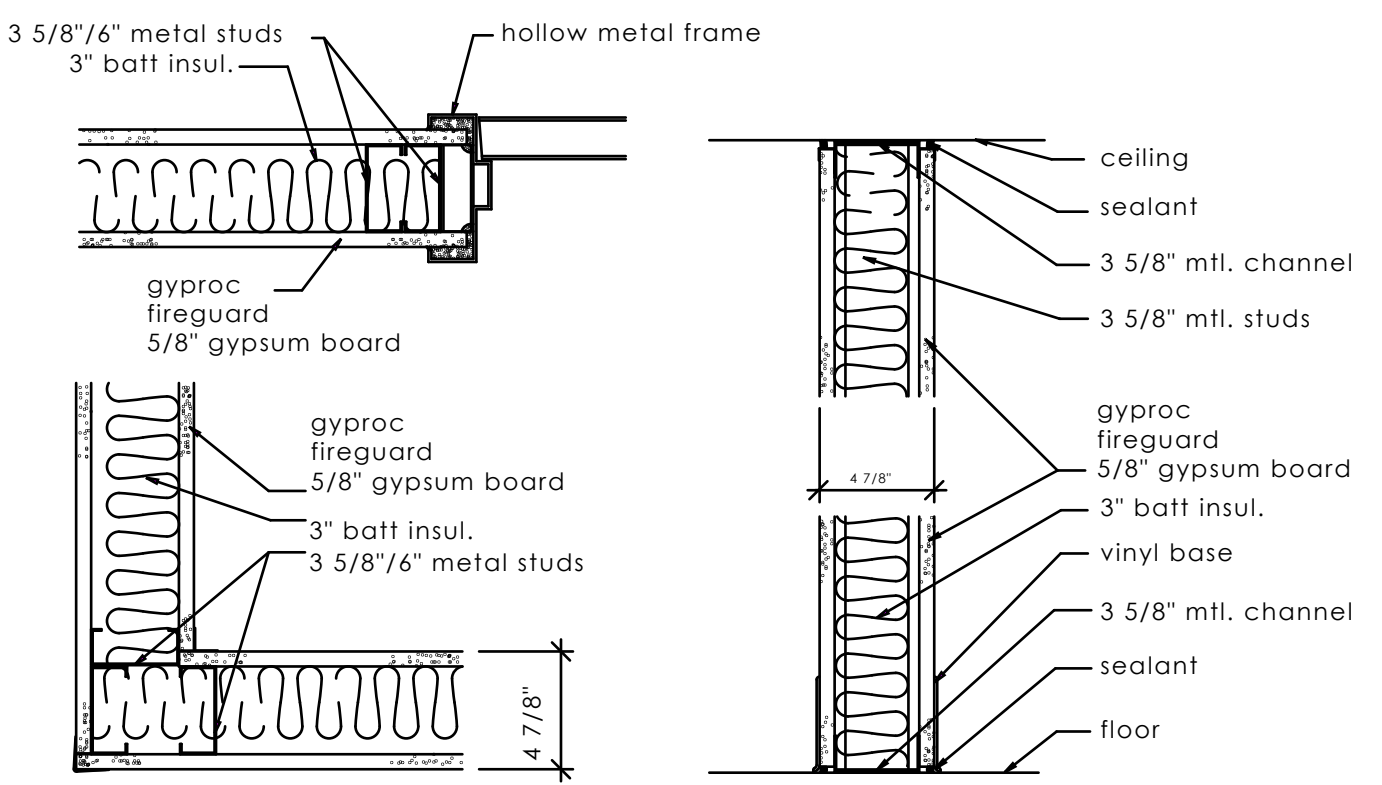
s1 AIRBORNE SOUND INTERIOR WALL
STC 50 WALL



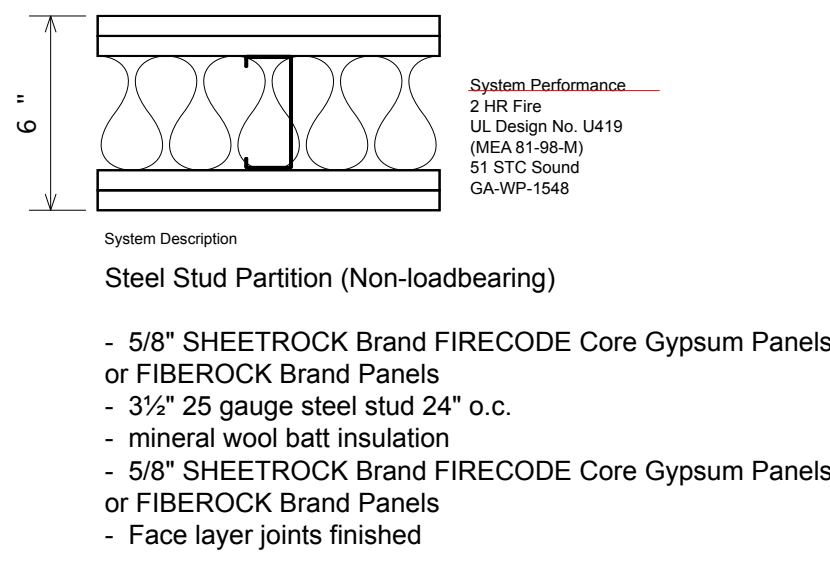
s2 CEILING 1 HOUR RATED
FIRE TEST: DESIGN U514
STC: 50
IIC: 60



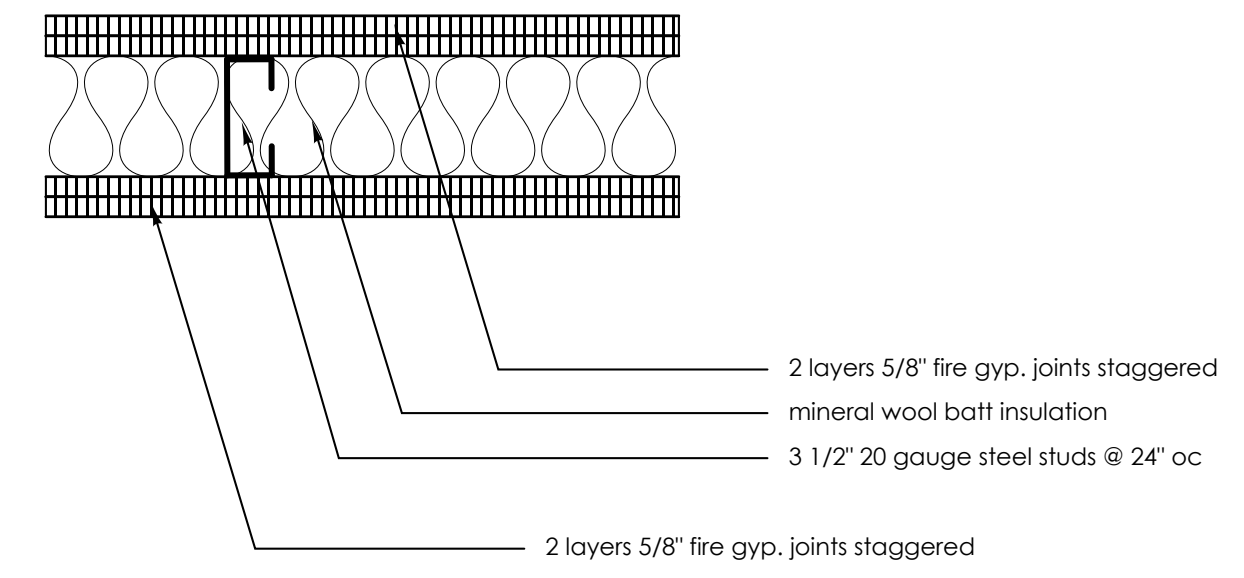
s3 CEILING 2 HOUR RATED
UL L505 5/8" (15.9 mm) Fire-Shield C Gypsum Wallboard, base layer nailed at right angles to 2 x 10 (38 mm x 241 mm) wood joists spaced 16" o.c. (406 mm), resilient furring channels spaced 24" o.c. (610 mm) and nailed through base board into and at right angles to joists. Face layer of 5/8" (15.9 mm) Fire-Shield G board screwed to furring channel. Nominal 1" (25.4 mm) T & G sub and finish floor.



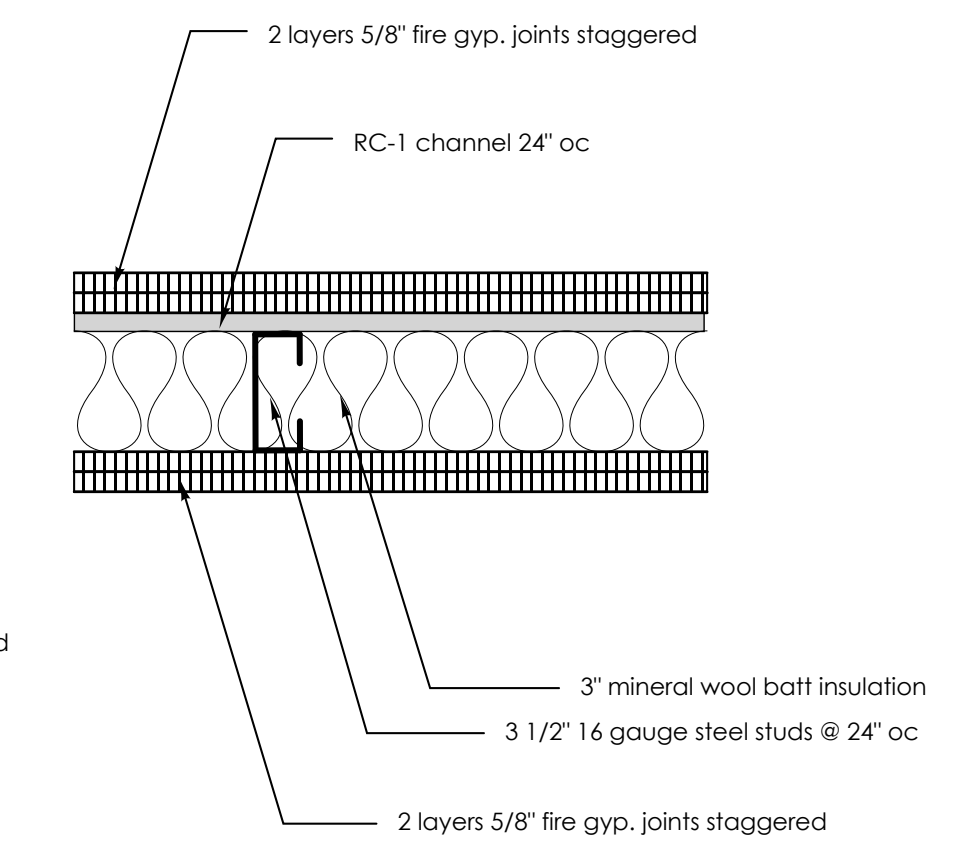
f1 1 HOUR RATED METAL PARTITION
FIRE TEST: DESIGN U419
STC: 50
3 5/8" and 6" metal stud noted on drawings



f2.1 2 HOUR RATED METAL PARTITION
non-load bearing



f2.2 2 HOUR RATED LOAD BEARING EXTERNAL WALL
UL 425



f3 1 HOUR RATED
UL 423
STC 61

TEEN SHELTER
38 PREBLE STREET

RATED WALLS AND
CEILINGS

ASSORTED WALL TYPES

Owner:
Preble Street
18 Portland Street
Portland, Maine 04104

Architect:
James Sterling, AIA
Architect
142 High Street
Portland, Maine

A-6.2