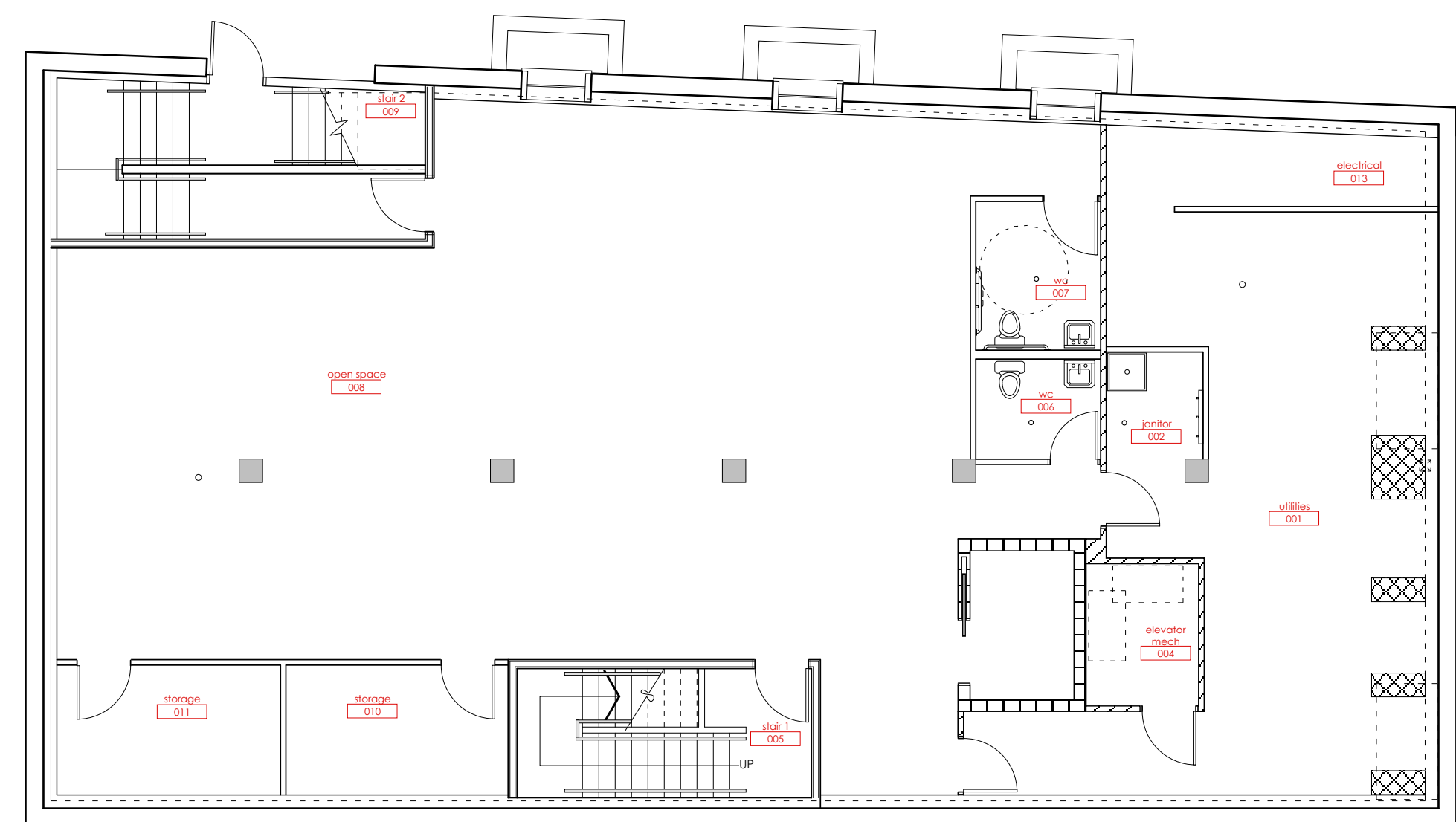
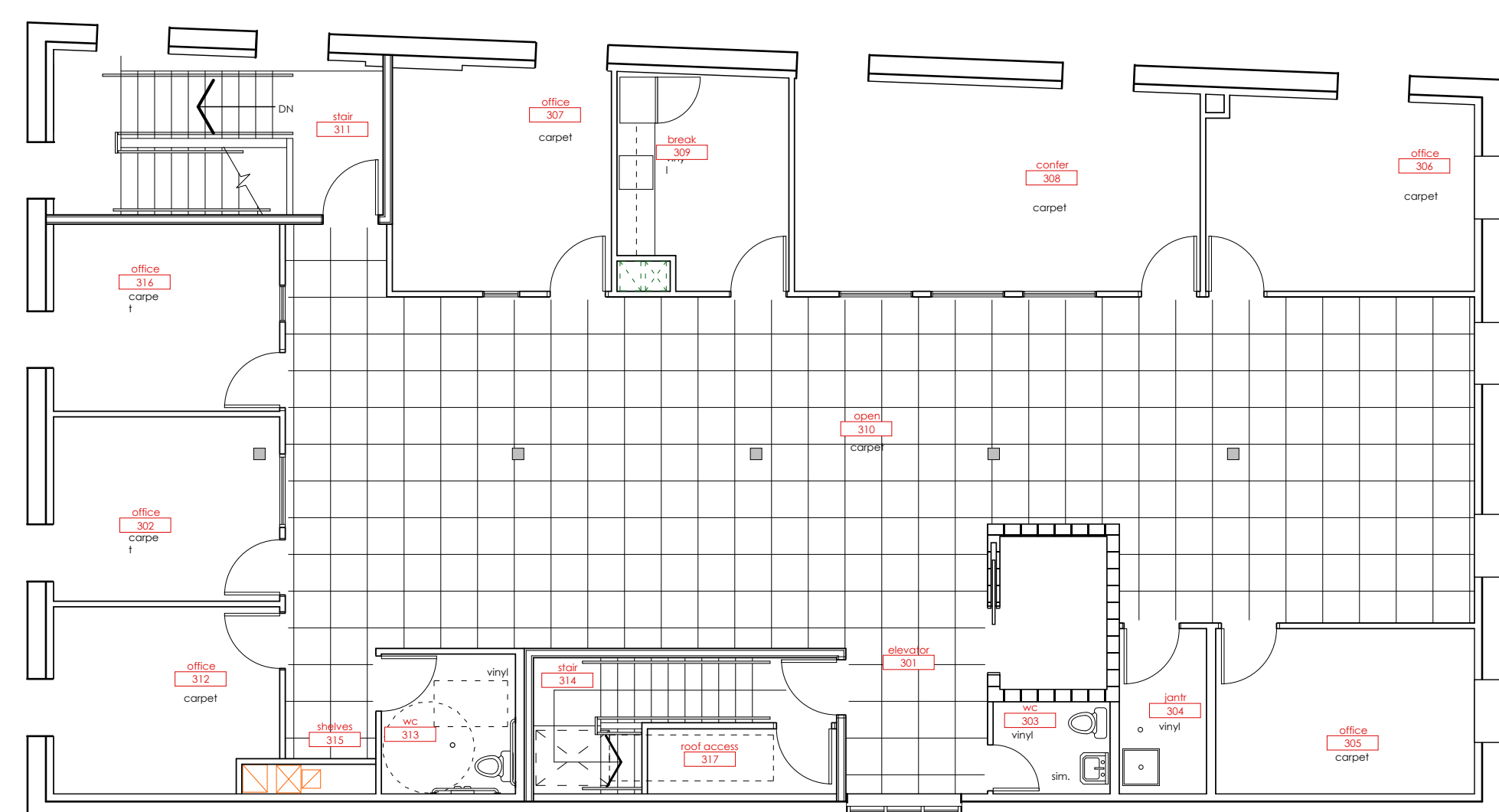


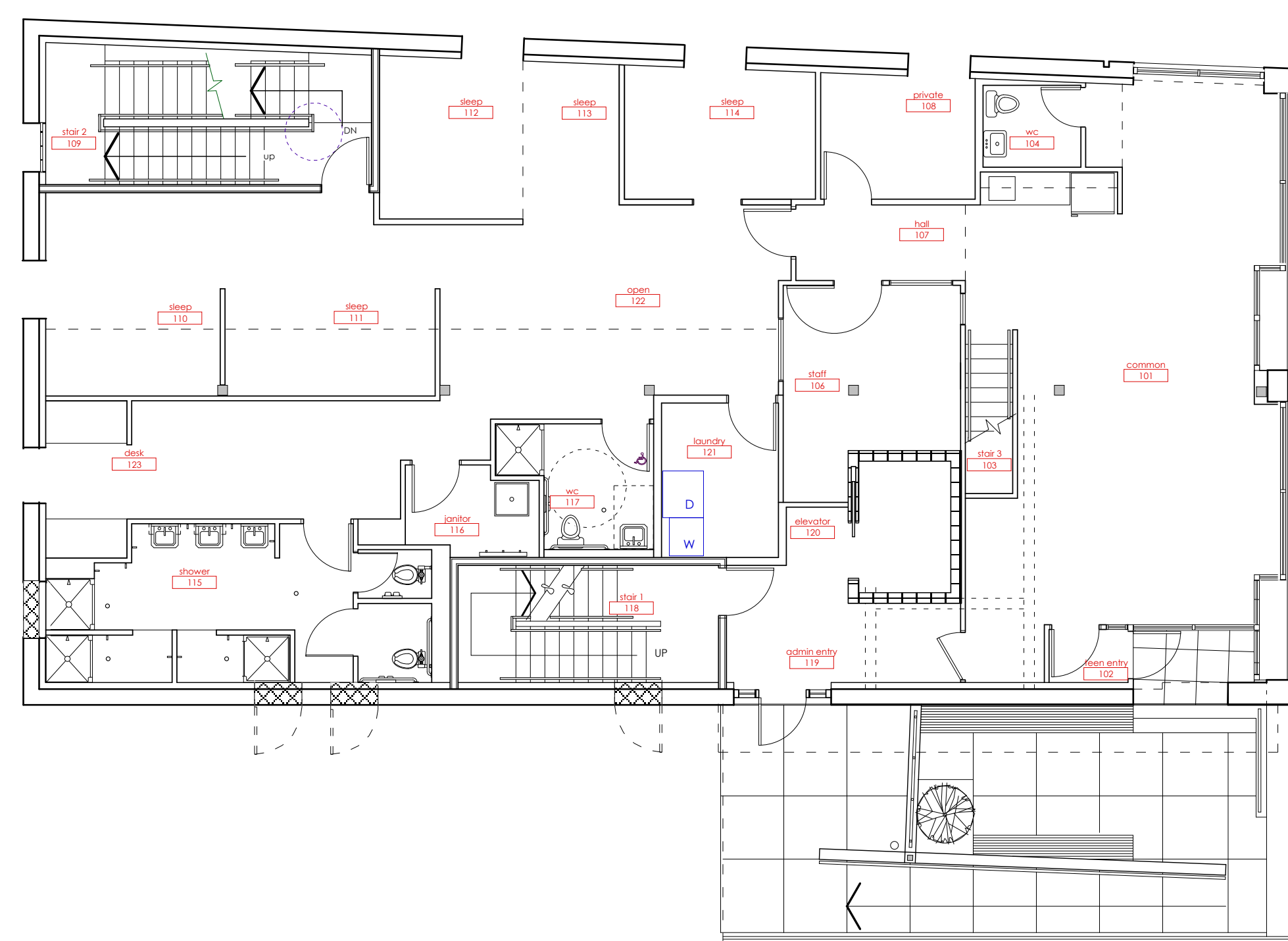
A-1.2 SECOND FLOOR



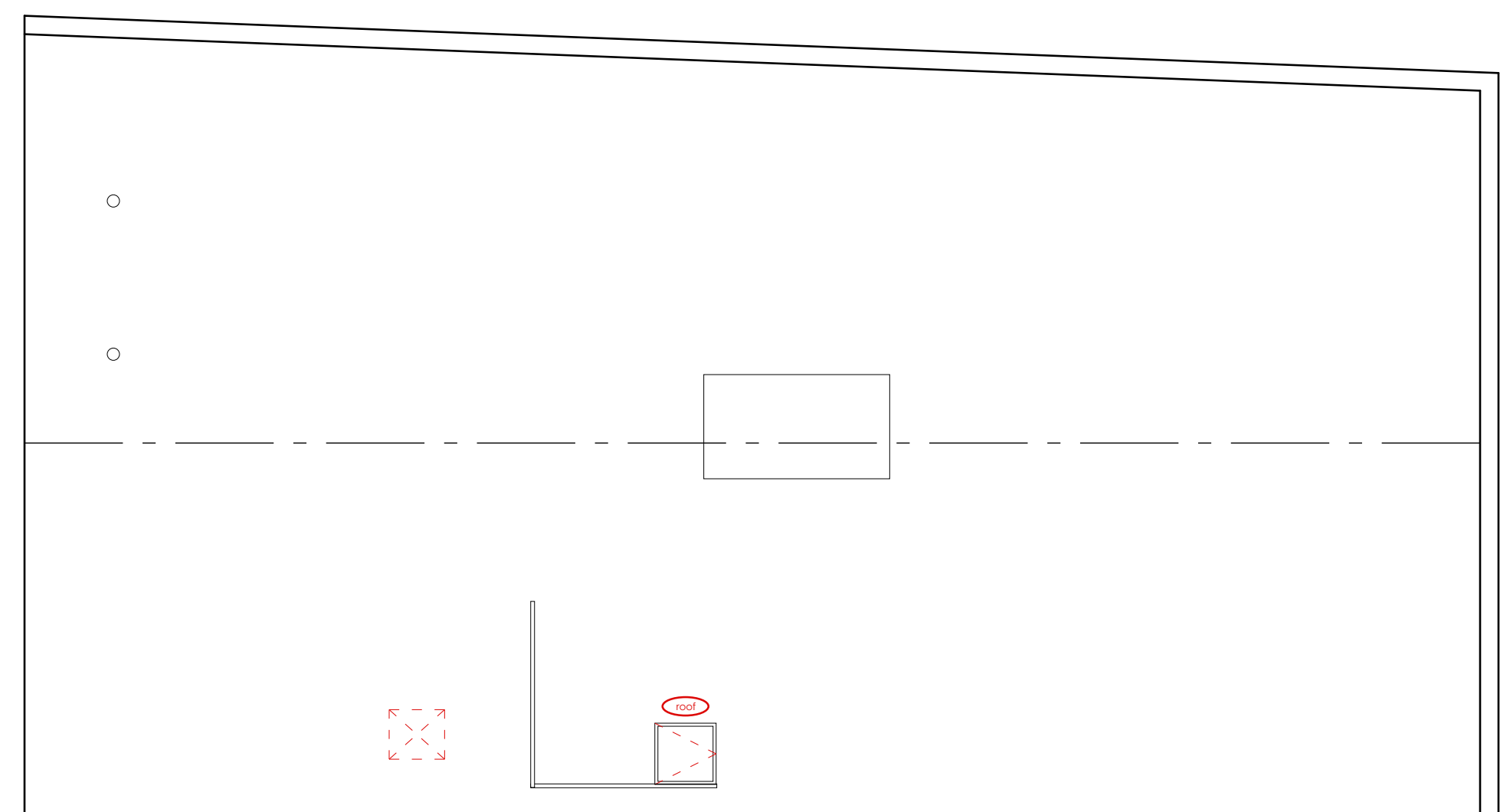
A-1.0 BASEMENT



A-1.3 THIRD FLOOR



A-1.1 FIRST FLOOR



A-1.4

Finish Schedule		
Basement Level A-1.0		
number	room name	finish package
001	utilities	A
002	DELETE	
003	stair 3	C
004	elevator mech.	A
005	storage	A
006	wc	B
007	wc	B
008	open space	F
009	stair 2	C
010	storage	A
011	storage	A
012	DELETE	
FIRST LEVEL A-1.1		
number	room name	finish package
101	common	D
102	teen entry	entry carpet, vinyl base
103	stair 3	C
104	wc	B
105	stair 3 landing	F, entryway carpet
106	staff	D
107	hall	D
108	private	D
109	stair 2	C
110	sleep	D
111	sleep	D
112	sleep	D
113	sleep	D
114	sleep	D
115	shower	E
116	janitor	E
117	wc	E
118	stair 1	C
119	admin. entry	F, entryway carpet
120	elevator lobby	F, entryway carpet
121	laundry	B
122/123	open/desk	D
Second Level A-1.2		
number	room name	finish package
201	common	D
202	break	D
203	stair 3	C
204	wc	B
205	closet	D
206	staff	D
207	hall	D
208	private	D
209	stair 2	C
210	sleep	D
211	sleep	D
212	sleep	D
213	sleep	D
214	sleep	D
215	shower	E
216	janitor	E
217	wc	E
218	stair 1	C
219	elevator lobby	F, entryway carpet
220	laundry	B
221	desk	D
Third Level A-1.3 see note 2.		
number	room name	finish package
301	elevator	F, entryway carpet
302	office	F
303	wc	B, wood base
304	janitor	E
305	office	F
306	office	F
307	office	F
308	conference	F
309	break	D/1x4 poplar pl
310	open	F see plan
311	stair 2	C
312	office	F
313	wc	B, wood base
314	stair 1	C
315	storage	F

- PACKAGE A**
- walls gwb, see drwgs for rating
  - ceiling gwb, see drwgs for rating
  - floor concrete, sealed
  - base 4" vinyl
- PACKAGE B**
- walls gwb, see drwgs for rating
  - ceiling gwb, see drwgs for rating
  - floor vinyl, welded
  - base 8" flash cove
- PACKAGE C**
- walls gwb, see drwg for rated
  - ceiling gwb, see drwg for rated
  - floor carpet stairs 1 and 3
  - floor rubber stair 2
  - base 1x poplar painted
- PACKAGE D**
- walls 5/8" fiberock' gwb, painted, sound insulation, high walls only
  - ceiling gwb, see drwgs for rating
  - floor vinyl
  - base 4" vinyl cove
- PACKAGE E (teen wc)**
- walls frp over gwb fiberock
  - ceiling 5/8" moisture gwb
  - floor vinyl, welded
  - base 8" flash cove
- PACKAGE F**
- walls gwb, see drwgs for rating
  - ceiling gwb, 2x2 drop clg see grid
  - floor carpet
  - base 1x4 poplar painted

- NOTES:**
- COLUMNS (AND BEAMS WHERE EXPOSED) ON LEVELS 1, 2, AND 3 SHALL BE STRIPPED OF PAINT, SANDED, 3 COATS CLEAR POLYURETHANE MATT FINISH.
  - 3rd level drop ceiling room #310 to be high (coordinated with mechanical); offices shall be at 8' 6", feel verify.

TEEN SHELTER  
38 PREBLE STREET

FINISH  
SCHEDULES

Owner:  
Preble Street  
18 Portland Street  
Portland, Maine

Architect:  
James Sterling, IA  
Architect  
142 High Street  
Portland, Maine

A-6.1

