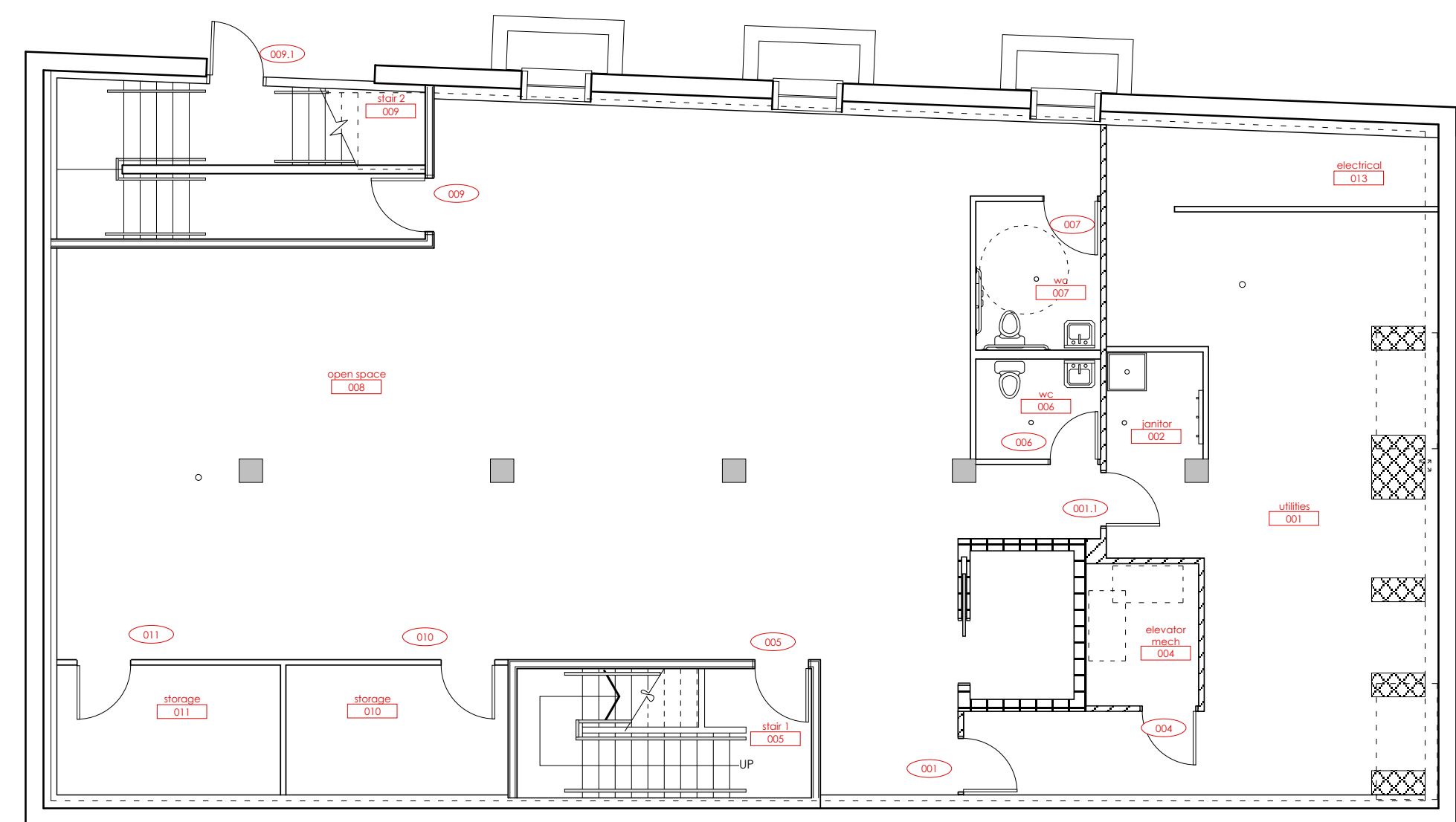
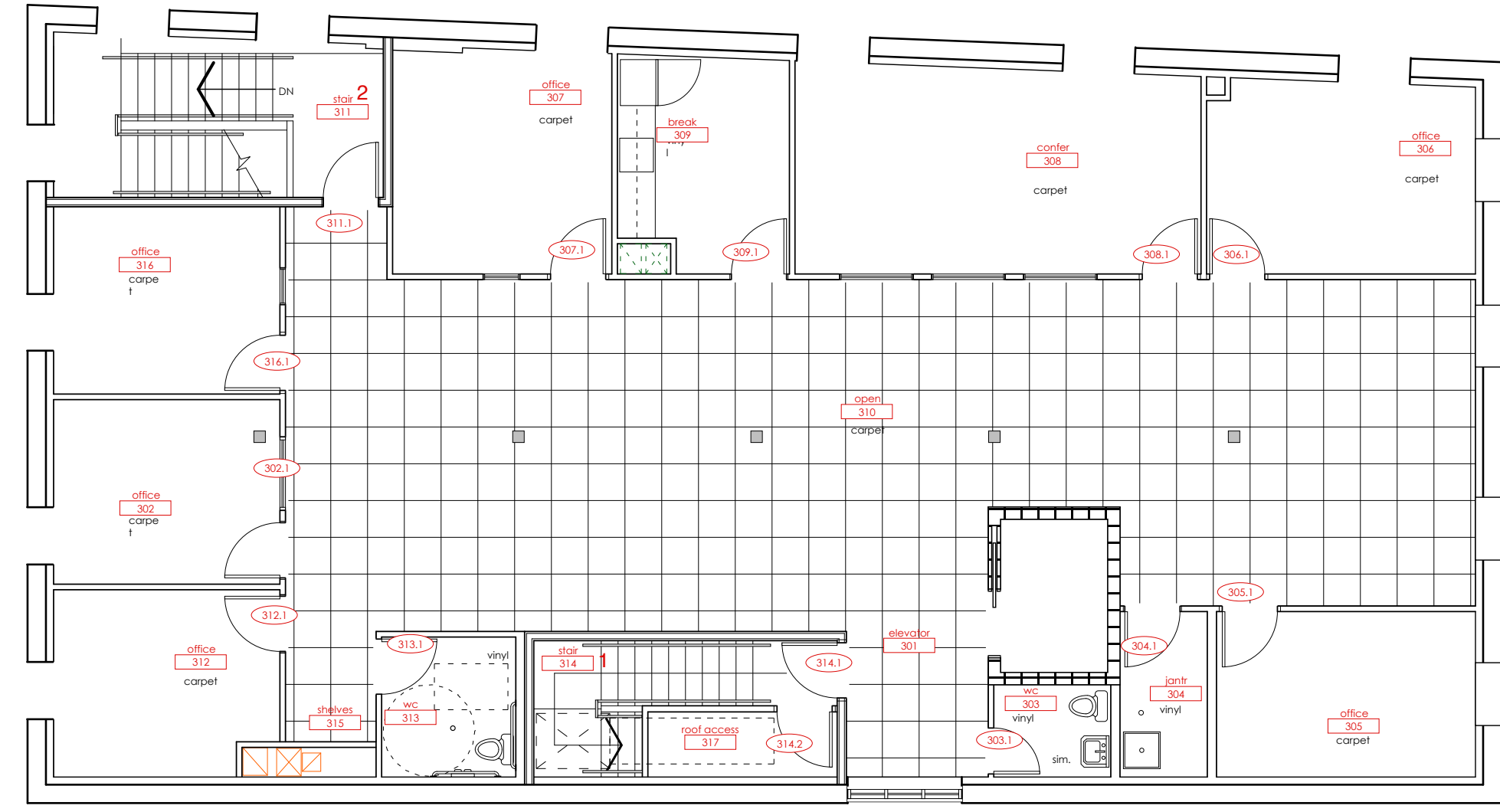


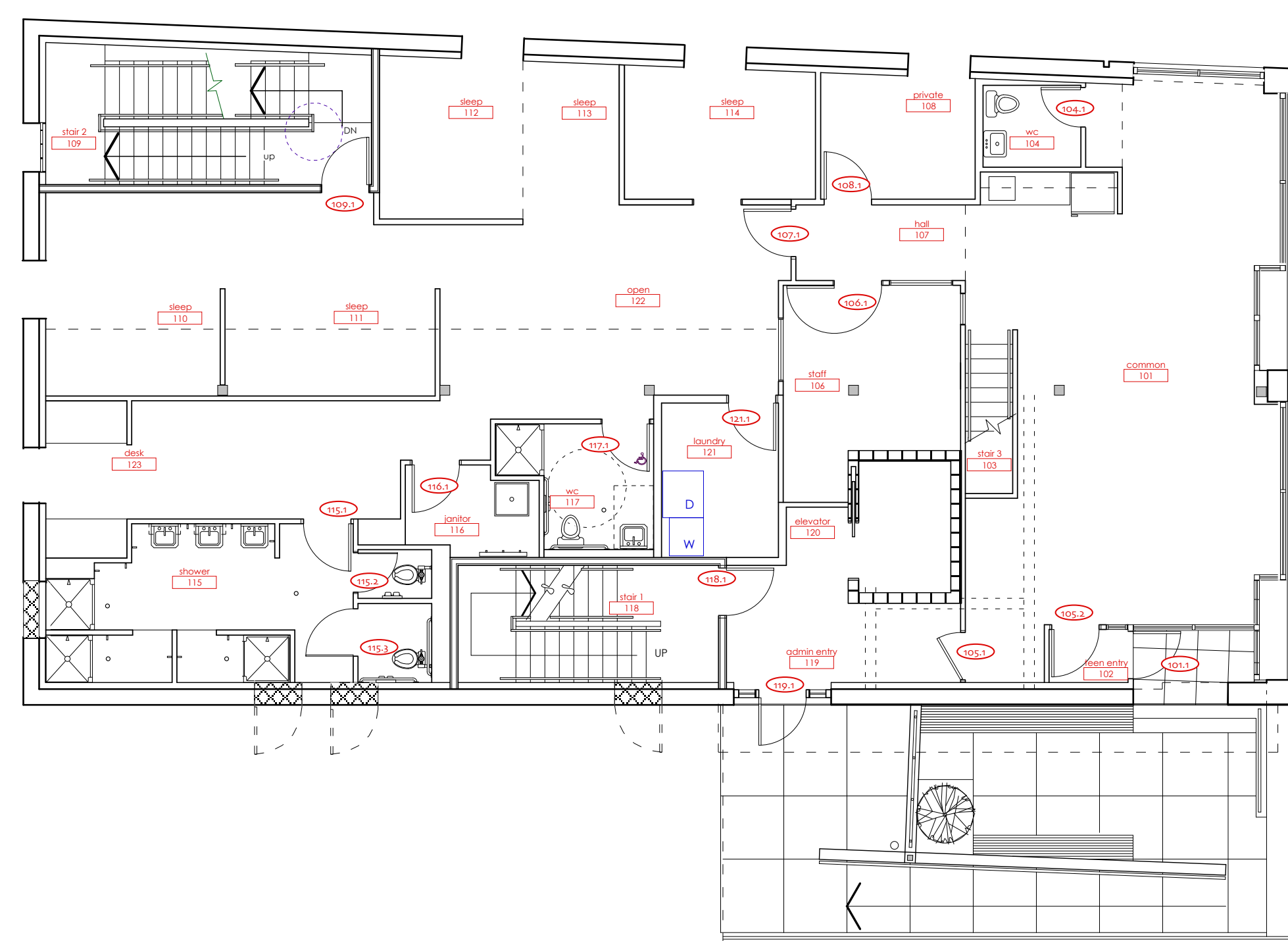
A-1.2 SECOND FLOOR



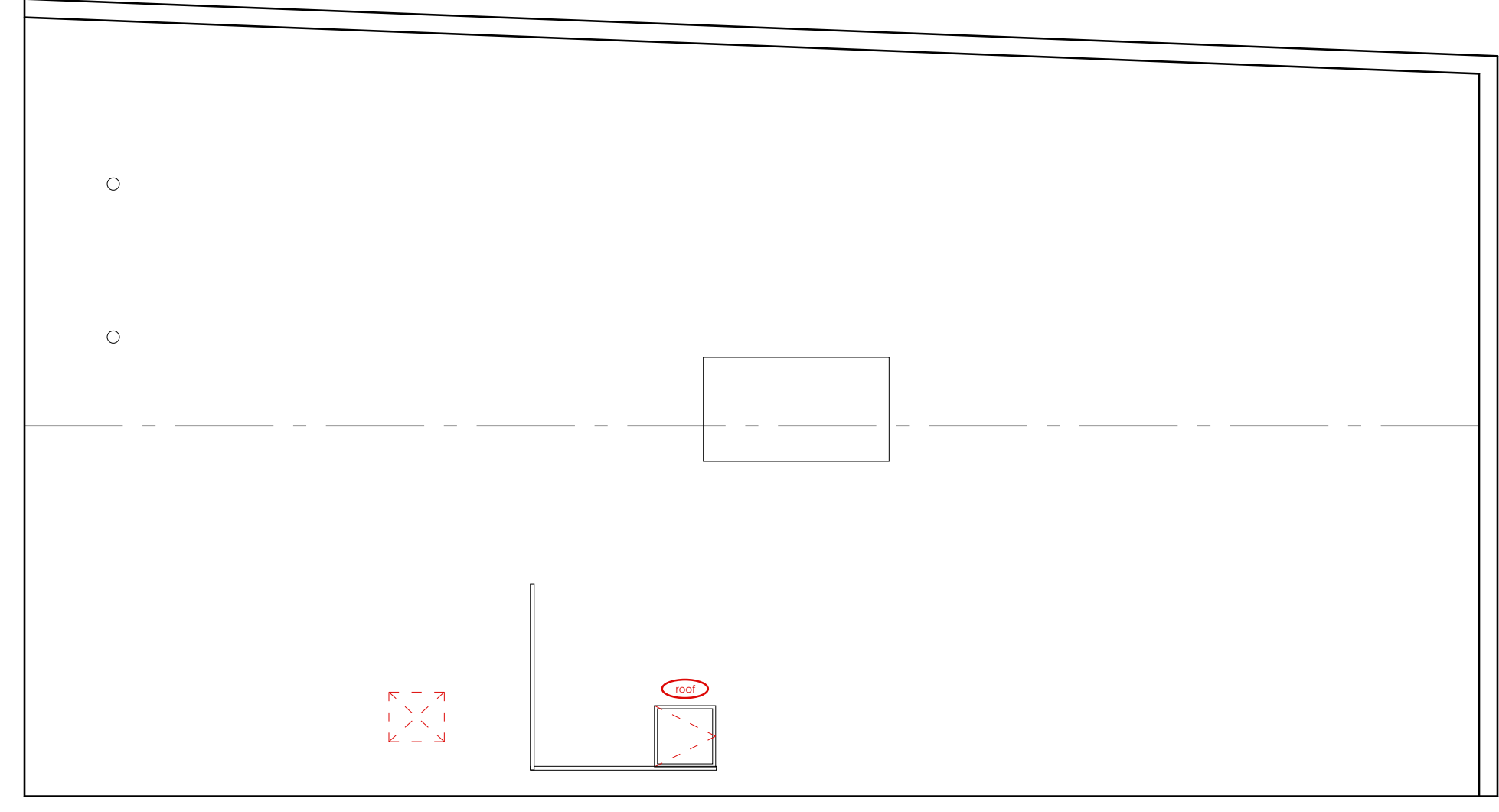
A-1.0 BASEMENT



A-1.3 THIRD FLOOR



A-1.1 FIRST FLOOR



A-1.4

Door Schedule				
door number	basement room	door	size	hardware (ADA compliant)
001	utilties	C	3'0" X 6'8"	
001.1	utilties	C	3'0" X 6'8"	
002	DELETE			
004	elevator mech relocate existing			
005	stair 1	C	3'0" X 6'8"	
006	wc	A	3'0" X 6'8"	
107	wc	A	3'0" X 6'8"	
009	stair 2	C	3'0" X 6'8"	
009.1	cumberland ave	B	3'0" X 6'8"	
010	storage	A	3'0" X 6'8"	
011	storage	A	3'0" X 6'8"	
012	DELETE			
013	DELETE			
door number	first level room	door	size	hardware (ADA compliant)
101.1	common	B	3'0" X 7'0"	
104.1	wc	A	3'0" X 6'8"	
105.1	to elev lobby	C	3'0" X 6'8"	
105.2	common	B	3'0" X 7'0"	
106.1	staff	E	3'0" X 6'8"	
107.1	hall	E	3'0" X 6'8"	
108.1	private	A	3'0" X 6'8"	
109.1	stair 2	C	3'0" X 6'8"	
115.1	shower	A	3'0" X 6'8"	
115.2	toilet	A	3'0" X 6'8"	
115.3	toilet/shower	A	3'0" X 6'8"	
116.1	janitor	A	3'0" X 6'8"	
117.1	wc	A	3'0" X 6'8"	
118.1	stair 1	C	3'0" X 6'8"	
119.1	adm entrance		3'0" X 7'0"	see note below
120.1	DELETE			
121.1	laundry	C	3'0" X 6'8"	
door number	second level room	door	size	hardware (ADA compliant)
202.1	break room	E	3'0" X 6'8"	
204.1	wc	A	3'0" X 6'8"	
205.1	closet	A	3'0" X 6'8"	
206.1	staff	E	3'0" X 6'8"	
207.1	hall	E	3'0" X 6'8"	
208.1	private	A	3'0" X 6'8"	
209.1	stair 2	C	3'0" X 6'8"	
215.1	shower	A	3'0" X 6'8"	
215.2	toilet	A	3'0" X 6'8"	
215.3	toilet/shower	A	3'0" X 6'8"	
216.1	janitor	A	3'0" X 6'8"	
217.1	wc	A	3'0" X 6'8"	
218.1	stair 1	C	3'0" X 6'8"	
219.1	stair 3	C	3'0" X 6'8"	
220.1	laundry		3'0" X 6'8"	
door number	third level room	door	size	hardware (ADA compliant)
302.1	office	E	3'0" X 6'8"	
303.1	w c	A	3'0" X 6'8"	
304.1	janitor	A	3'0" X 6'8"	
305.1	office	E	3'0" X 6'8"	
306.1	office	E	3'0" X 6'8"	
307.1	office	E	3'0" X 6'8"	
308.1	conference	E	3'0" X 6'8"	
309.1	break	E	3'0" X 6'8"	
309.2	delete			
311.1	stair 2	C	3'0" X 6'8"	
312.1	office	E	3'0" X 6'8"	
313.1	wc	A	3'0" X 6'8"	
314.1	stair 1	C	3'0" X 6'8"	
314.2	roof access	D	3'0" X 6'8"	
315.1	delete			
316.1	office	E	3'0" X 6'8"	

DOOR A interior
thickness 1 3/4"
material solid core birch veneer
finish clear
frame metal, painted

DOOR B store front
thickness 2"
material aluminum
finish mill
frame metal, painted

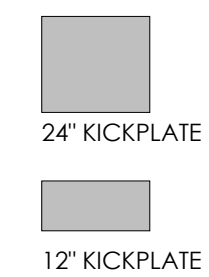
DOOR C fire rated provide closer
thickness 1 3/4"
material solid core birch veneer
finish clear
rating see wall rating
frame metal, painted

DOOR D
thickness 1 3/4"
material steel or fiberglass insulated
finish painted
frame metal, painted

DOOR E
thickness 1 3/4"
material solid core birch veneer
finish clear
glass tempered units
frame metal, painted

Provide 36"x 36" insulated aluminum roof hatch w/railings

NOTES:
1. EXISTING ENTRY DOOR 119.1 TO BE REFINISHED PROVIDE ADA COMPLIANT NEW HARDWARE.
2. ALL HARDWARE TO BE ADA COMPLIANT.
3. ALL DOORS IN EGRESS AREA SHALL BE SELF CLOSING.
4. ALL HARDWARE TO BE BRUSHED STAINLESS.
5. ONLY DOORS IN LEVELS 2 AND 3 SHALL HAVE KICKPLATES.



TEEN SHELTER
38 PREBLE STREET

DOOR SCHEDULES

Owner:
Preble Street
18 Portland Street
Portland, Maine

Architect:
James Sterling, AIA
Architect
142 High Street
Portland, Maine

