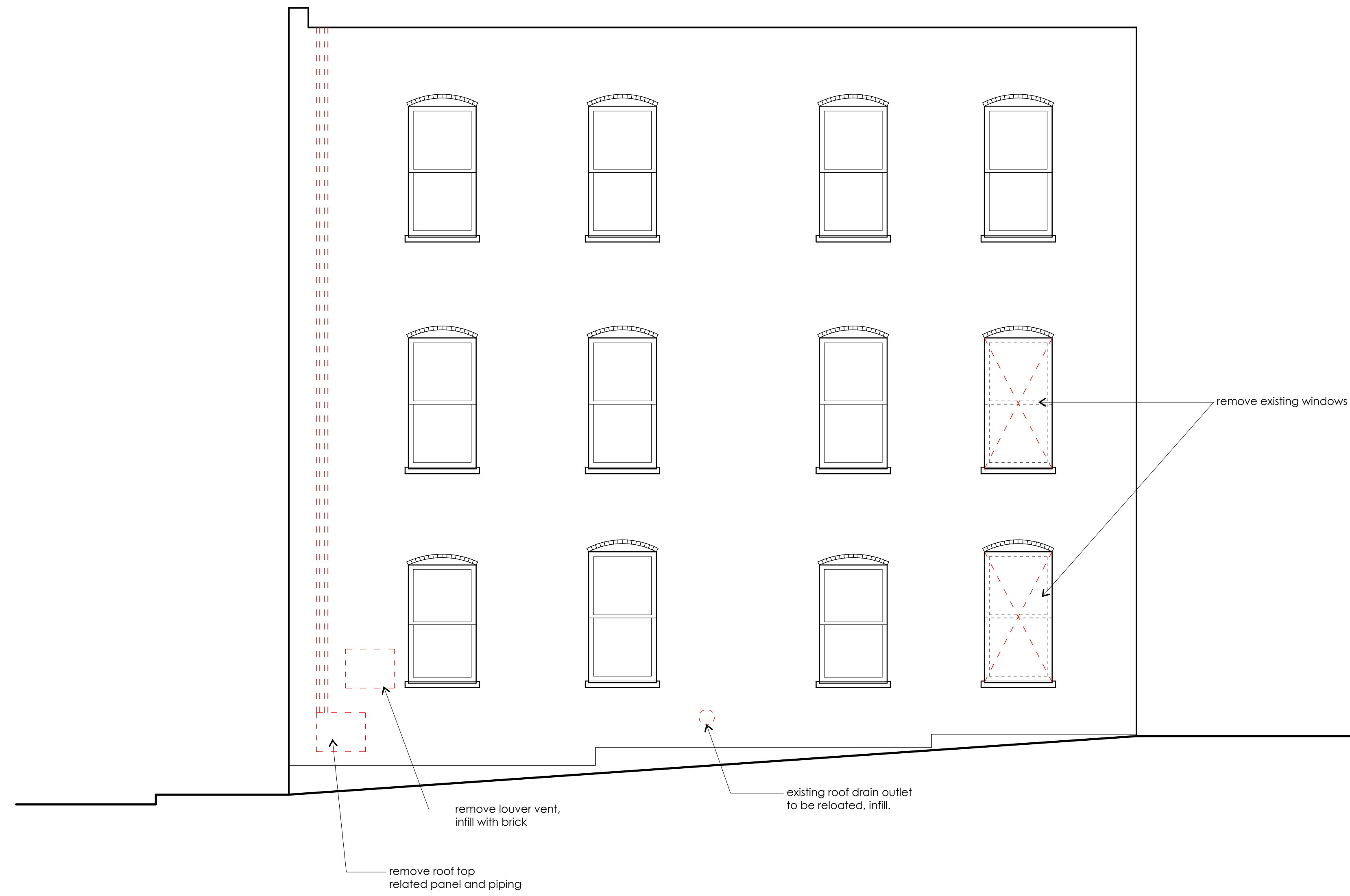


LONGFELLOW APARTMENTS



TEEN SHELTER  
38 PREBLE STREET

SOUTH ELEVATION  
DEMOLITION

Owner:  
Preble Street  
18 Portland Street  
Portland, Maine

Architect:  
James Sterling, AIA  
Architect  
142 High Street  
Portland, Maine

**A-2.3.1**