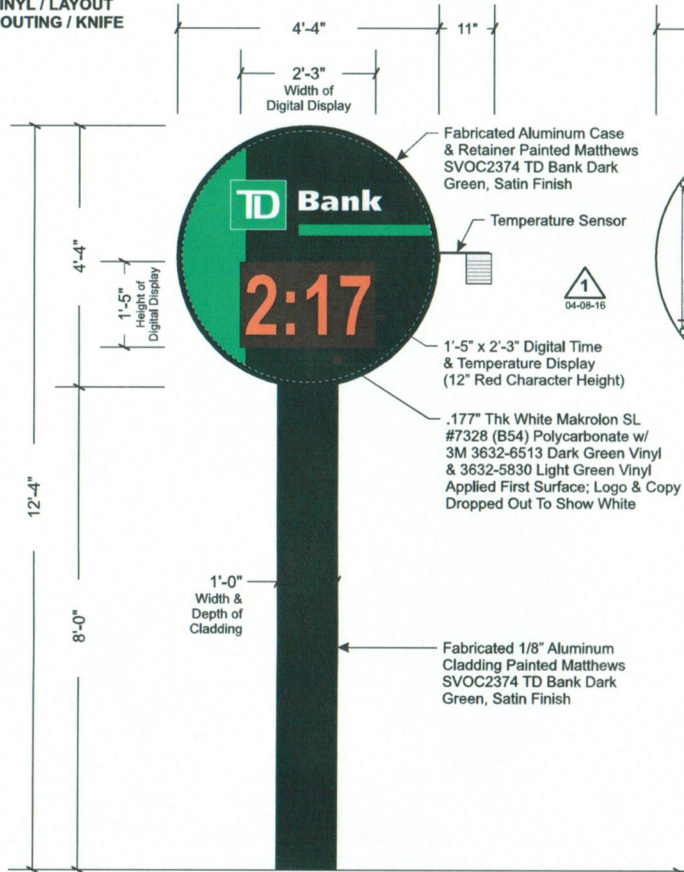
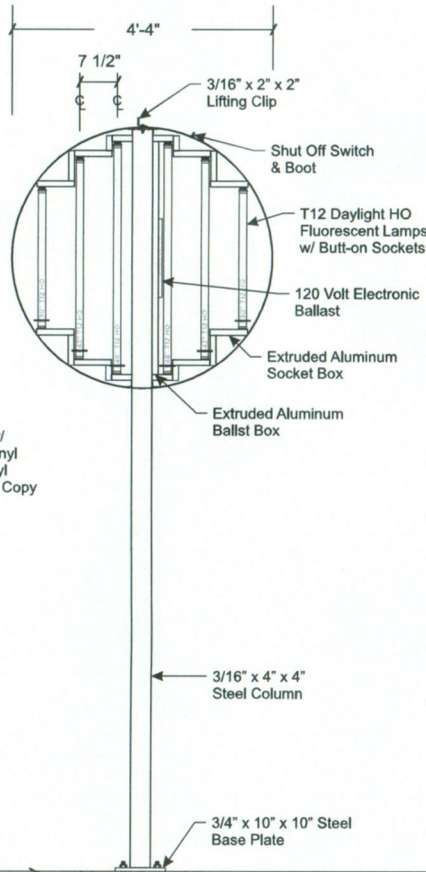


ENGINEERING  
SHOP  
VINYL / LAYOUT  
ROUTING / KNIFE

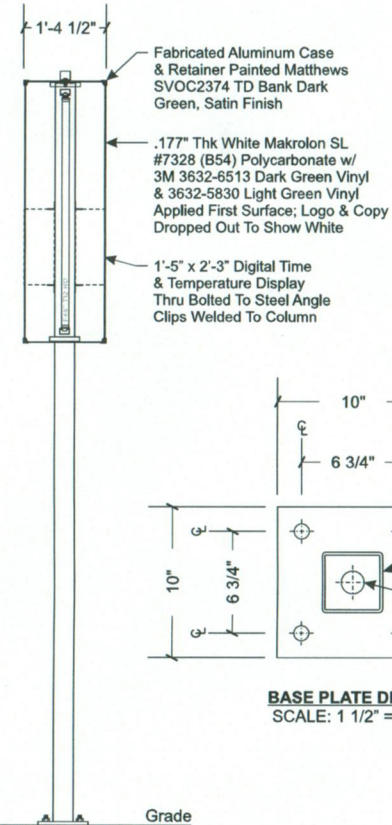


FRONT ELEVATION  
SCALE: 1/2" = 1'-0"

UL# A465 27708



CONSTRUCTION ELEVATION  
SCALE: 1/2" = 1'-0"



SIDE VIEW  
SCALE: 1/2" = 1'-0"

BASE PLATE DETAIL  
SCALE: 1 1/2" = 1'-0"

PERMITS  
ONLY



PHILADELPHIASIGN  
BRINGING THE WORLD'S BRANDS TO LIFE

707 West Spring Garden Street  
Palmyra, New Jersey 08065

Phone: 856.829.1460  
Fax: 856.829.8549  
www.philadelphiasign.com

CUSTOMER:

TD Bank

JOB NUMBER:

TD\_4226

SIGN TYPE:

Pylon

LOCATION:

481 Congress St  
Portland, ME 04101

DATE:

3-16-16

DRAWN BY:

RAB

REVISION:

Number: 1 Date: 04-08-16 By: RAB

SHEET:

1 of 1

DWG NUMBER:

B67078

ENGINEER SEAL:

**Electrical Load**  
5.41 Amps @ 120 Volts  
**Electrical Req'mts**  
(1) 20 Amp/120 Volt Circuits

**STANDARD PYLON NOTES:**

1. Sufficient Primary Circuit In Vicinity Of Sign By Others.
2. Final Primary Hook-up By Sign Installer, Where Allowed By Local Codes.
3. Sign Shall Be U.L. Listed.
4. Soil Assumed To Be Medium Clay, Or Better, With Minimum Soil Bearing Capacity Of 2,500 PSF.
5. Concrete 2,500 PSI @ 28 Days.
6. Reinforcing Steel Shall Be ASTM A615 GR-40.
7. Structural Steel Shall Be ASTM A36.
8. All Welds Shall Conform To A.W.S Standards.

MAX DESIGN WIND SPEED 90 MPH  
EXPOSURE C

THIS IS AN ORIGINAL UNPUBLISHED DRAWING CREATED BY PSCD. IT IS SUBMITTED FOR YOUR PERSONAL USE IN CONNECTION WITH A PROJECT BEING PLANNED FOR YOU BY PSCD. IT IS NOT TO BE SHOWN TO ANYONE OUTSIDE YOUR ORGANIZATION NOR IS IT TO BE USED, COPIED, REPRODUCED, OR EXHIBITED IN ANY FASHION.

Note: This sign is intended to be installed in accordance with the requirements of Article 600 of the National Electrical Code and/or other applicable local codes. This includes proper grounding and bonding of the sign.