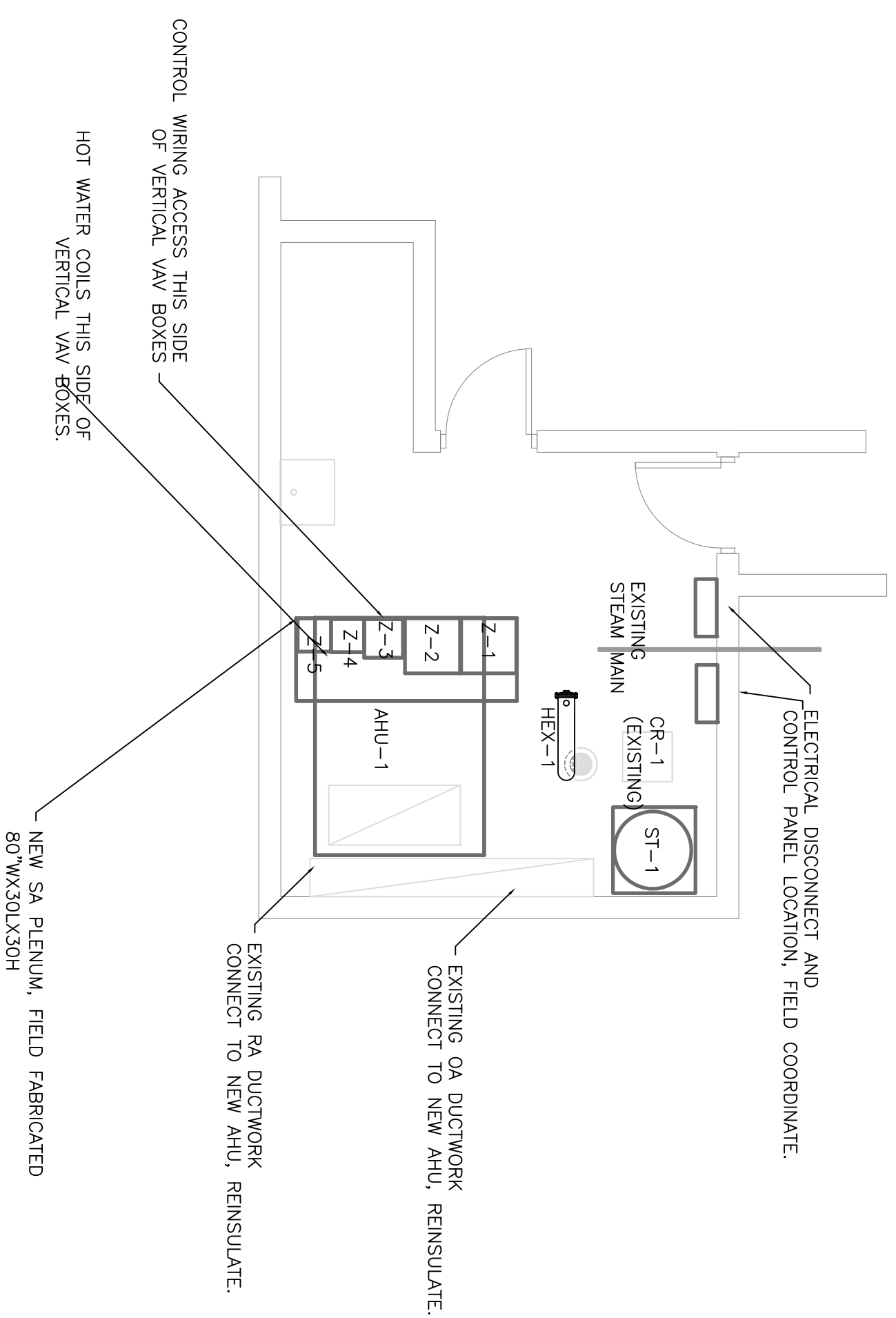
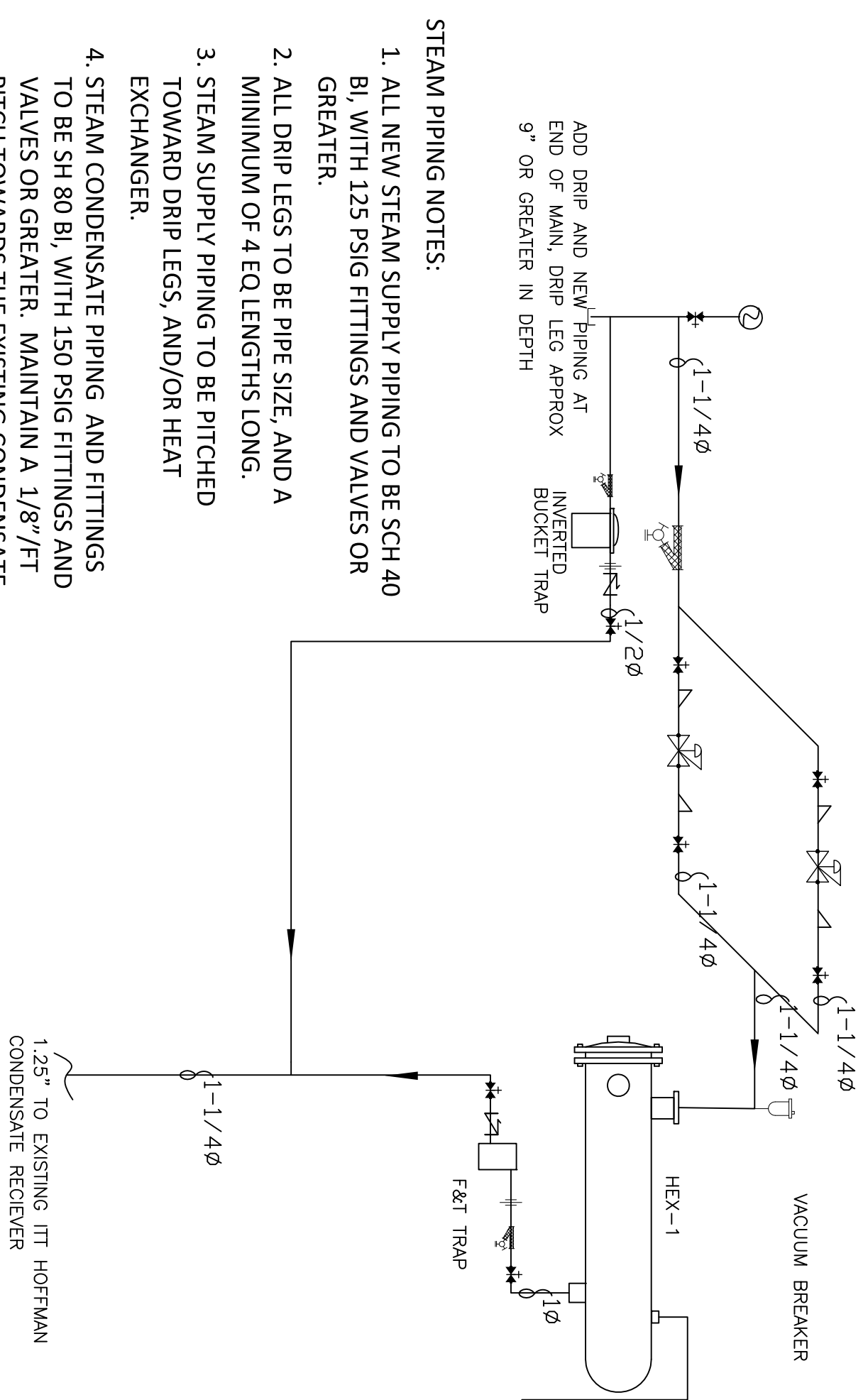


- DEMO NOTES:
- EXISTING ITT HOFFMAN CONDENSATE RECEIVER, DISCONNECT CONDENSATE DISCHARGE LINES FOR RELOCATION
 - REMOVE CONDENSATE LINES
 - REMOVE EXHAUST FAN FROM PLENUM
 - EXISTING STEAM LINE TO REMAIN, DISCONNECT AHU COIL PIPING.
 - DISCONNECT POWER WIRING TO AHU
 - REMOVE EXISTING CONTROLS, DISCONNECTS, RELAYS, AND ASSOCIATED CONDUIT.
 - REMOVE EXISTING AIR HANDLER, TO BE DISASSEMBLED. NOTE: DOOR WIDTH AT 31"
 - DUCTWORK TO BE DISCONNECTED FROM AHU AND VERTICAL SECTIONS TO BE REMOVED UP PIPING AND CONDENSING PLANTFORM REMOVED. THIS TO BE SCHEDULED WITH CRANE PICK FOR NEW EQUIPMENT INSTALLATION.
 - REMOVE EXISTING PIPING FOR EVENTUAL RECONNECTION.
 - NEW ZONE SENSORS TO BE LOCATED WHERE EXISTING THERMOSTATS ARE LOCATED.

MECHANICAL ROOM DEMO PLAN $\frac{1}{4}"=1'$

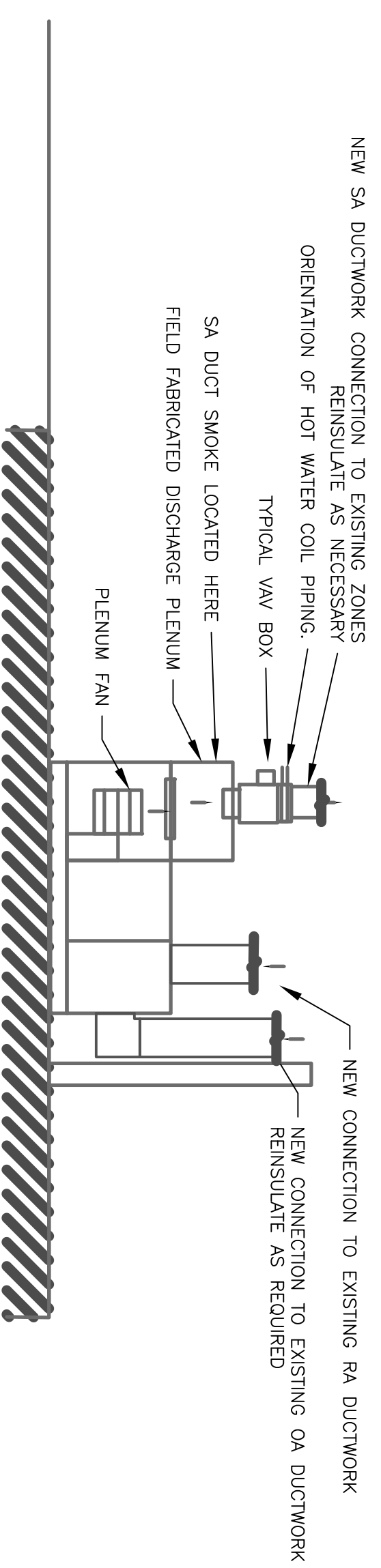


ELEVATION VIEW OF AIR HANDLER WITH DUCT CONNECTIONS, PLENUM BOX, & VAV BOX. $\frac{1}{4}"=1'$

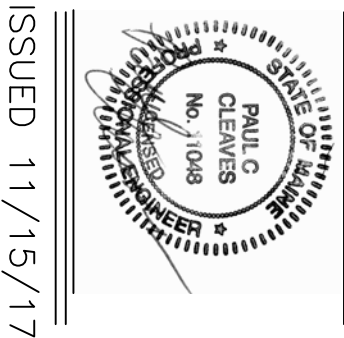


- STEAM PIPING NOTES:
- ALL NEW STEAM SUPPLY PIPING TO BE SCH 40 BI, WITH 125 PSIG FITTINGS AND VALVES OR GREATER.
 - ALL DRIP LEGS TO BE PIPE SIZE AND A MINIMUM OF 4 EQ LENGTHS LONG.
 - STEAM SUPPLY PIPING TO BE PITCHED TOWARD DRIP LEGS, AND/OR HEAT EXCHANGER.
 - STEAM CONDENSATE PIPING AND FITTINGS TO BE SH 80 BI, WITH 150 PSIG FITTINGS AND VALVES OR GREATER. MAINTAIN A 1/8"/FT PITCH TOWARDS THE EXISTING CONDENSATE RECEIVER.
 - IF RELOCATION OF THE CONDENSATE RECEIVER IS REQUIRED, MATCH EXISTING PIPING SYSTEMS.
 - ALL STEAM AND CONDENSATE PIPING SHALL BE INSULATED WITH FIBERGLASS INSULATION WITH ASI, THICKNESS OF INSULATION TO BE 1.5".

STEAM PIPING SCHEMATIC



ELEVATION VIEW OF AIR HANDLER WITH DUCT CONNECTIONS, PLENUM BOX, & VAV BOX. $\frac{1}{4}"=1'$



ISSUED 11/15/17

AIRTEMP INC
20 THOMAS DRIVE
WESTBROOK ME



TD BANK
481 CONGRESS ST
PORTLAND MAINE

CLIENT	DATE
DRWN BY PCC	DATE 3/7/16
CHD BY PCC	
SHEET TITLE	EQUIPMENT LOCATIONS

SCALE VARIES
DRAWING M-1

PREL. 10/10/17
CONST. 11/15/17