

1'-2" HIGH CAST ALUMINUM LETTERS WITH DARK BRONZE ANODIZED FINISH (ARCHITECTURAL STYLE)
STUD MOUNTED IN OPENING AS SHOWN

NON-LIGHTED CAST ALUMINUM LETTERS
SCALE: 1/8" = 1'-0" (1) SET REQUIRED

SIGN		FACE		PC		LETTERS		ELECTRICAL		POLES		BASE & PLATE		RMVL	
MATL:	TYPE:	THK:	MATL:	MATL:	HT:	DEEP:	TRANSF:	PRIMARY VOITS:	LAMPS:	LAMPS:	PL MATL:	PL SIZE:	PL THK:		
RET.:	DEPTH:	COLOR:	COPY:		INTERIOR EXTERIOR	FACE-LIT BACK-LIT	HOUSINGS:		LAMPS:	LAMPS:					
					RETURNS:	BACKS:	WIRING: R/W 1/2 BX 3/8 LIQ		BALLAST:	BALLAST:					
					TUBING COLOR:	ROWS:			LOAD:	LOAD:					
						MM:			UL: YES NO	UL: YES NO					

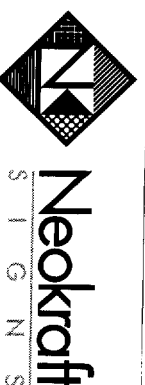
Time & Temperature

SHOP DRAWING

Location: 477 Congress St.
Portland, ME

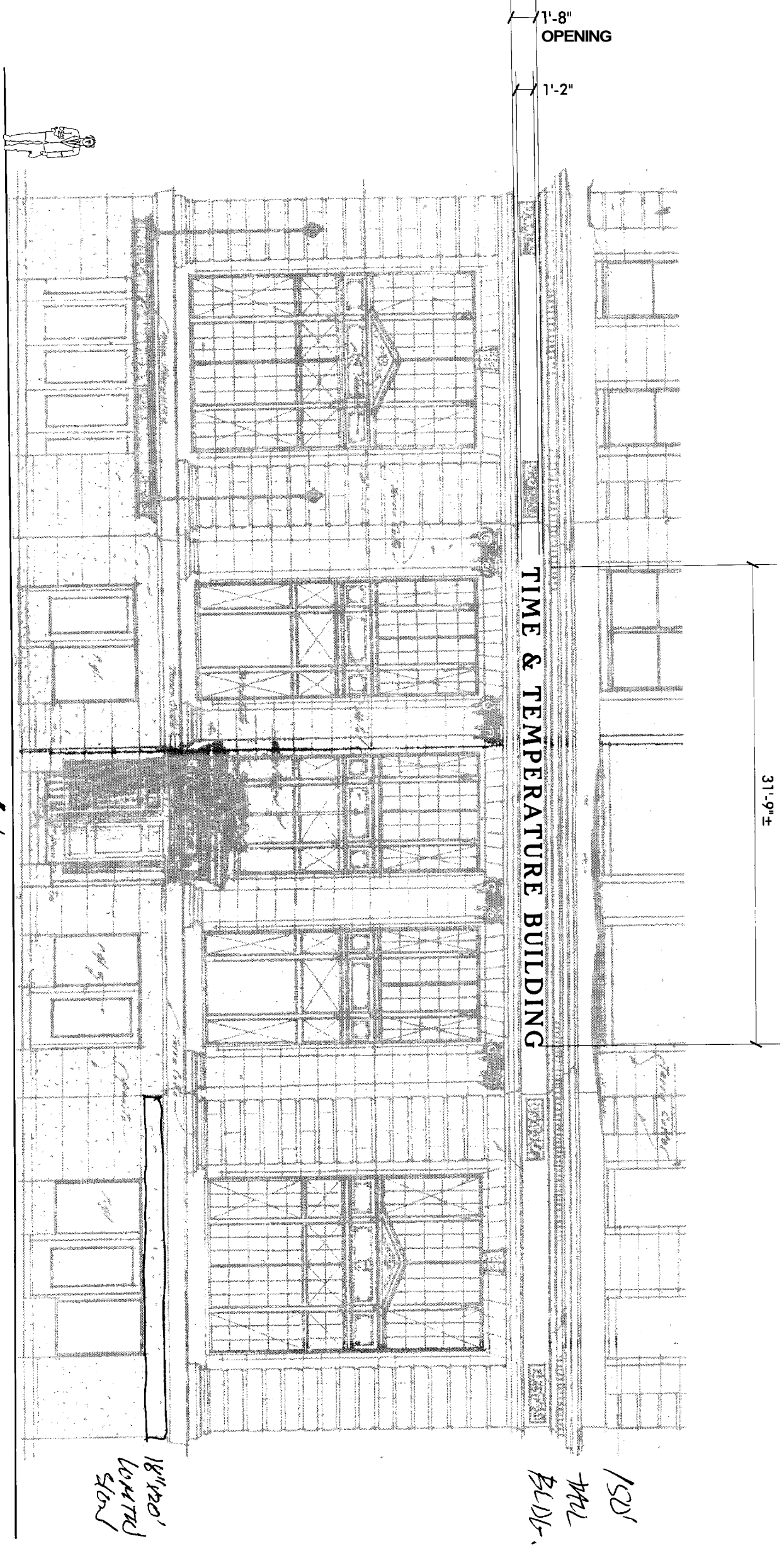
Drawing No.: 1 of 1
Drawn by: PFAT

Date: 09.21.2004
Gen Ref.:



Neokraft Signs Inc.
686 Main Street
Lewisville, Maine 04240

http://www.neokraft.com
T:207.782.9654 F:782.0009
1.800.339.2258



1'-2" HIGH CAST ALUMINUM LETTERS WITH DARK BRONZE ANODIZED FINISH (ARCHITECTURAL STYLE)
 STUD MOUNTED IN OPENING AS SHOWN

NON-LIGHTED CAST ALUMINUM LETTERS
 SCALE: 1/8" = 1'-0" (1) SET REQUIRED

SIGN		FACE		PC		LETTERS		ELECTRICAL		POLES		BASE & PLATE		RMVL	
MATL:	TYPE:	COLOR:	FACE-LIT BACK-LIT	MATL:	HT:	DEEP:	RETURN:	NO. OF CIRCUITS:	LAMPS:	PL MATL:	PL SIZE:	PL THK:	BASE TYPE:	SET IN CONC ANCHOR BOLTS	STORE FOR NEOKRAFT STORE FOR CUSTOMER
RETI:	DEPTH:	COPY:	BACKS:	MATL:			TUBING COLOR:	WIRING: RW 1/2 BX 3/8 LIQ	LAMP:	QTY:	SIZE:		BOLT SIZE:	SPACING:	
THK:	MATL:		ROWS:				TRANSF:		BALLAST:	QTY:	UL: YES NO				
			HOUSINGS:						LOAD:						

Time & Temperature

SHOP DRAWING

Location: 477 Congress St.
 Portland, ME
 Drawing No.: 1 of 1
 Drawn by: PFAT
 Date: 09.21.2004
 Gen Ref: :

Neokraft Signs Inc.
 686 Main Street
 Lewiston, Maine 04240
 http://www.neokraft.com
 T:207.782.9654 F:782.0009
 1.800.339.2258